

Query Manager Add-ons

Get the most out of your SAP-certified Query Manager solution with these Add-ons

The various Query Manager™ Add-on solutions can help you achieve maximum return on your investment, both on-premise and in SAP® SuccessFactors®. With these Add-ons, you can:

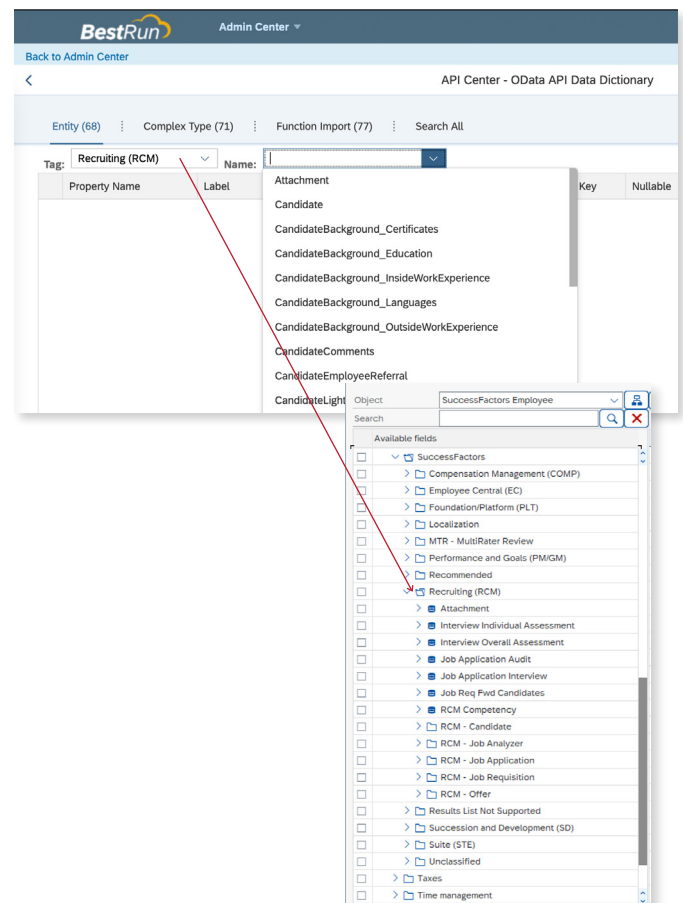
- Easily report across both on-premise SAP and SuccessFactors
- Work with your data in Microsoft Excel
- Feed any available data (on-premise SAP, including Payroll, Time and Configuration, and SuccessFactors and Employee Central Payroll data) into any system you are using for Query Manager reporting
- Create charts and graphs for interaction, drilldown, and analysis
- Develop bespoke reports.

QUERY MANAGER SUCCESSFACTORS INTEGRATION ADD-ON

Report on data from SAP and SuccessFactors at the same time

You can access your SuccessFactors data via Query Manager. SuccessFactors data is available as a data source in Query Manager, so it can be combined with data in SAP, or any system that you are using for Query Manager reporting. What makes this particular integration unique is that not only is it using live data, but we have also curated the data. We have taken the raw unstructured generic SuccessFactors data that is exposed via OData, and transformed it into user-friendly categories and descriptive text fields. This makes it easy for users to understand what the data is, and report on it accordingly.

- Reads data from SAP and SuccessFactors (using OData)
- Real-time and on-demand (no duplication of data)
- SuccessFactors data is available as a data source in Query Manager, so can be combined with any data in SAP, or any system that you are using for Query Manager reporting.



Quickly produce and analyse SAP HCM reports with the power of Query Manager and the flexibility of Microsoft Excel

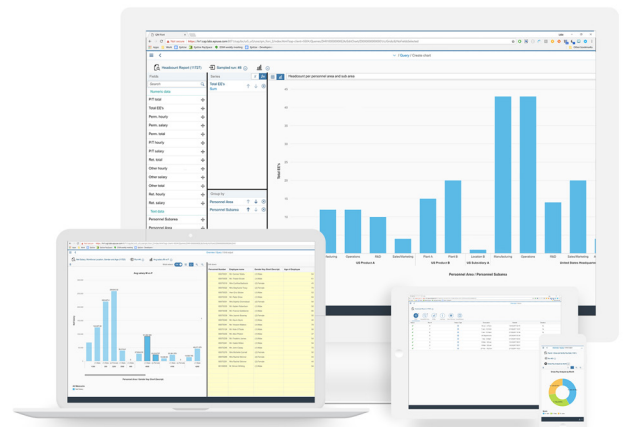
[illegible]

- ## QUERY MANAGER ANALYTICS CONNECTOR ADD-ON

Query Manager can also serve as an engine for feeding any data available (on-premise SAP data, including Payroll, Time and Configuration, and SuccessFactors and Employee Central Payroll data) to additional services for dynamic use. This is ideal for any applications that currently do not have real-time access to this data, including solutions such as SAP Analytics Cloud, SAP Data Warehouse Cloud, Microsoft Power BI and Tableau.



The Query Manager Fiori Add-on allows you to access your reports from anywhere – you don't have to be logged into a computer with SAP GUI installed. You can run and process reports from web browsers, mobile devices, self-service portals, HR Renewal portals or even from within SAP SuccessFactors Employee Central. The Fiori Add-on allows you to create charts for additional interaction, drilldown, and analysis. Whether you are creating an executive dashboard or monthly employee productivity reports, you can now visualise your data and transform it into a coherent and meaningful presentation.

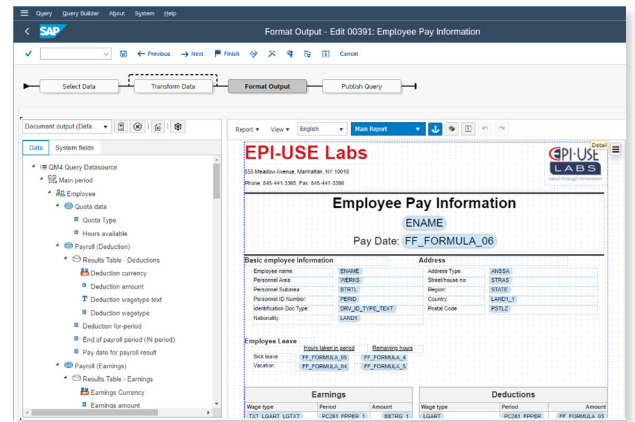


QUERY MANAGER WITH DOCUMENT BUILDER

Solving your SAP document generation and distribution challenges

Build professional-looking documents easily with Document Builder's rich visual designer and intuitive user interface. Visualise your data with a wide set of controls, define your document structure precisely, and create impressive designs using design-time aids. Add eye-catching elements with background images, watermarks, dynamic tables and charts, then preview your design instantly as an Adobe PDF document.

- Easy, secure distribution
- Automated custom notifications
- Eliminate custom code
- Design visually



QUERY MANAGER REPORT CREATION SERVICES

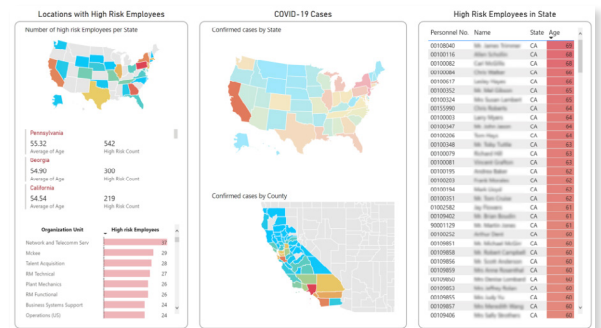
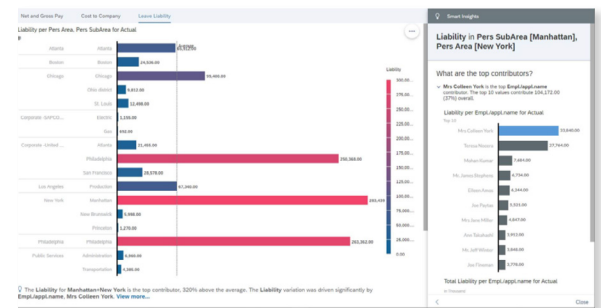
Report writing services: Helping companies through crucial HR, Benefits & Payroll changes

Are your HR and IT teams understaffed and struggling to perform day-to-day maintenance of crucial HR data? This may include the management of benefits, workforce and payroll.

If you use Query Manager, we can offer you report writing services for HR, Benefits and Payroll within your SAP & SuccessFactors systems.

These reports include:

- Payroll Reports
- SuccessFactors Integration Reports
- Recruiting Reports
- Formatted Reporting



As a global software solutions and managed services company, EPI-USE Labs helps you to maximise the performance, management and security of your SAP® and SAP SuccessFactors® systems. Our clients tell us every day how we have transformed their business operations. Contact us to find out how we can help you solve your business challenges.

Contact your Account Manager for availability and pricing in your region, or email sales@labs.epiuse.com

EPI-USE Labs is a member of the groupelephant.com family
epiuselabs.com