

# Flora COLLECTION

*Clever designs for Tourist/Caravan Park | Disabled Access  
Residential - under 60m<sup>2</sup> | Residential | Duplexes | Bed & Breakfast/Farm Stays  
Premium Mining/Worker Accommodation | Amenities*



Each category is highlighted with its own colour for easy identification - simply turn to the type of residence you require and select the plan that suits you best! Simple.

Tourist/Caravan Park

Pgs 3- 31

Disabled Access

Pgs 32- 36

Residential under 60m<sup>2</sup>

Pgs 37- 40

Residential

Pgs 41- 55

Duplexes

Pgs 56- 59

Bed and Breakfast/Farm Stays

Pgs 60- 63

Premium Mining/Worker Accommodation

Pgs 64- 77

Amenities

Pgs 78- 84

Things to talk to Asset about

Pg 85

Design your own Page

Pg 86

Why not customise your own plan?

Pg 87

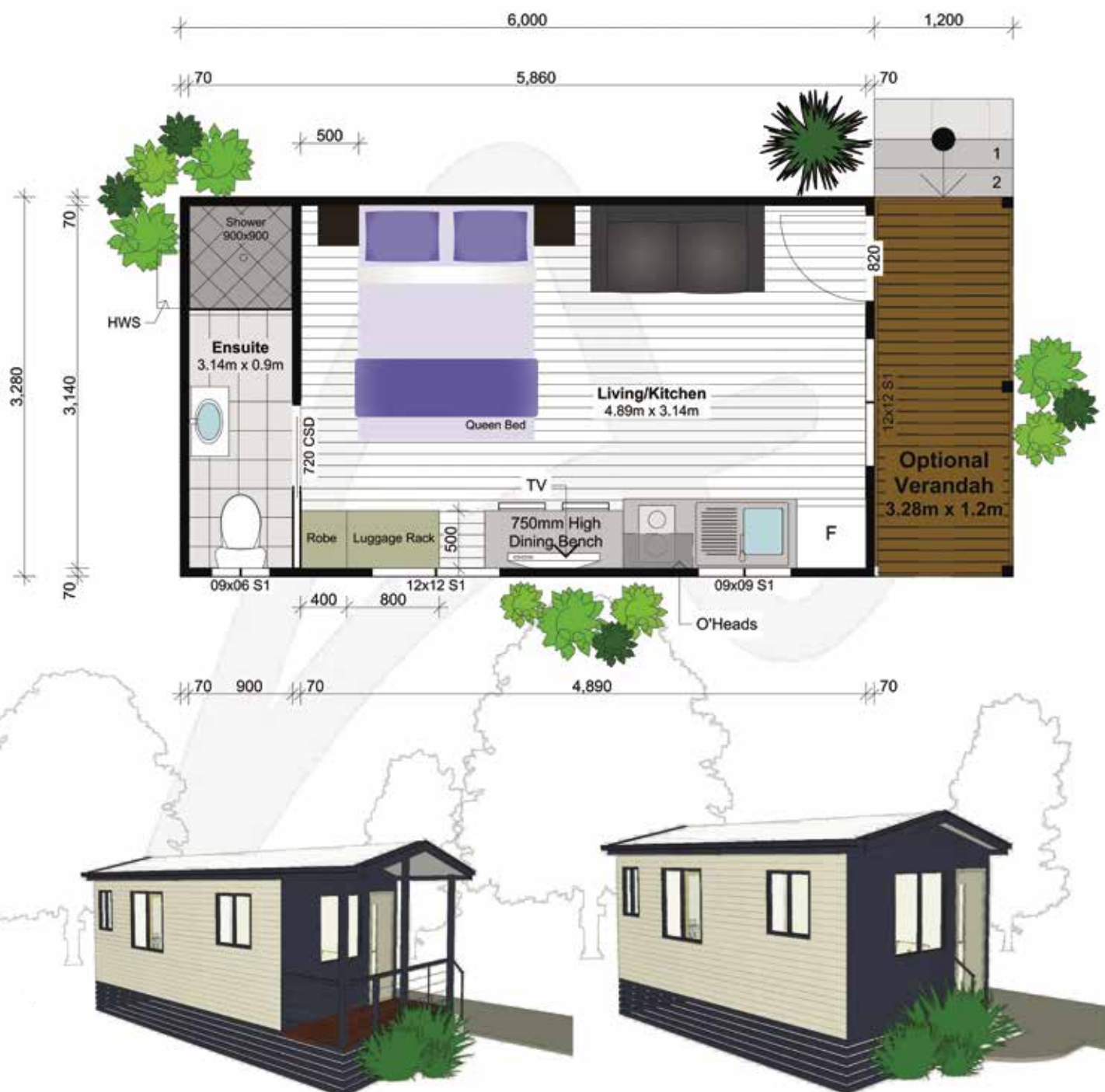
# Lacebark

Area (m<sup>2</sup>): Size (m):  
**19.68** **6.0 x 3.28**  
**23.6** **7.2 x 3.28** (incl. verandah)



## VERSION NOTES

- Shown with Colorbond Feature to External Wall
- Shown with 'Madison 101' Front Door





# Banksia

Area (m<sup>2</sup>): Size (m):  
**23.8** **6.6 x 3.6**  
**30.2** **8.4 x 3.6** (incl. verandah)



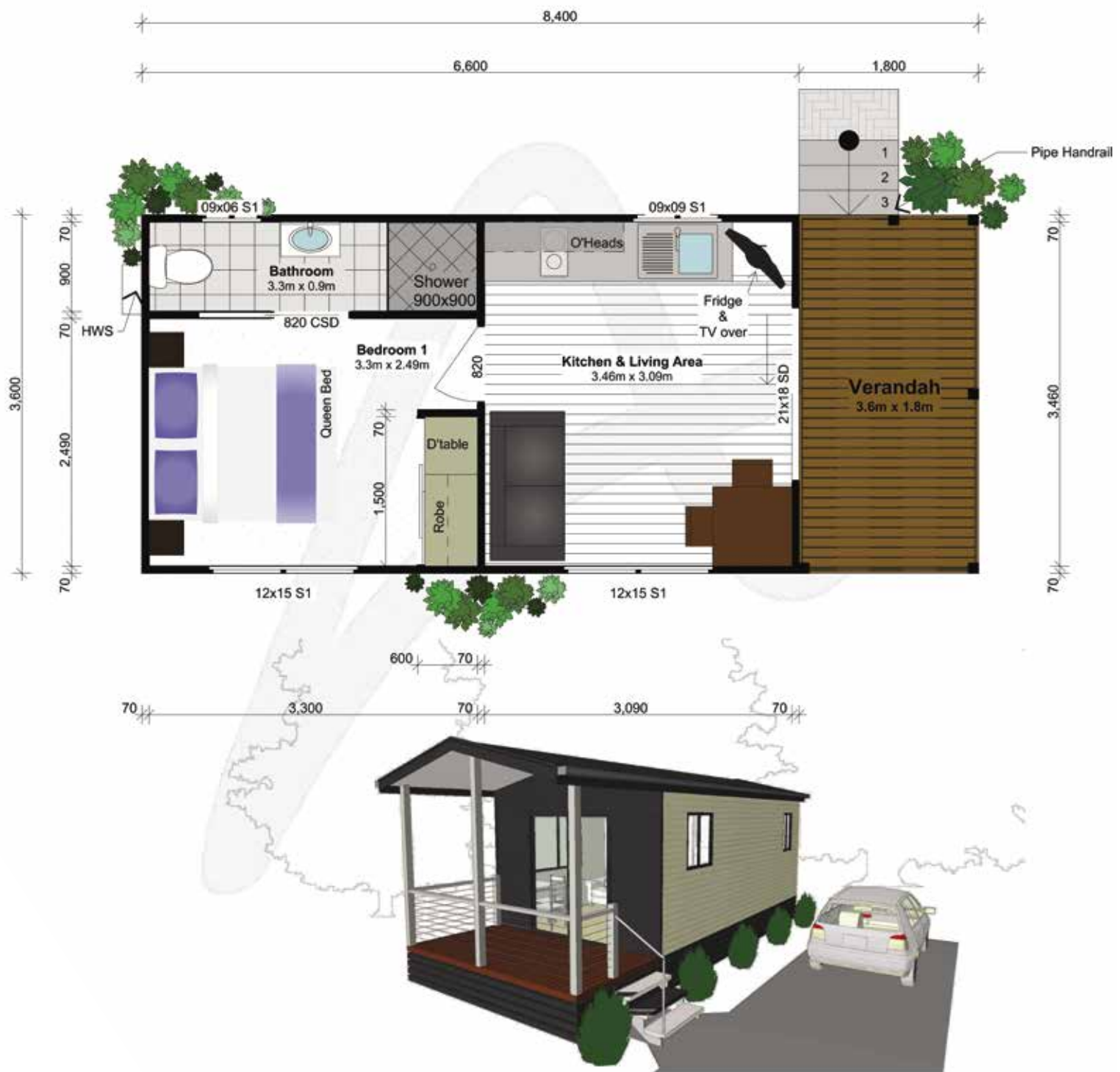
1



1

## VERSION NOTES

- Shown with Colorbond Feature to External Wall



# Kennedia



Area (m<sup>2</sup>): **30.83** Size (m): **8.4 x 3.67** (incl. verandah)

## VERSION NOTES

- Shown with 'The Coast' Roofline
- Shown with Colorbond Feature to External Wall
- Shown with 'Madison 101' Front Door



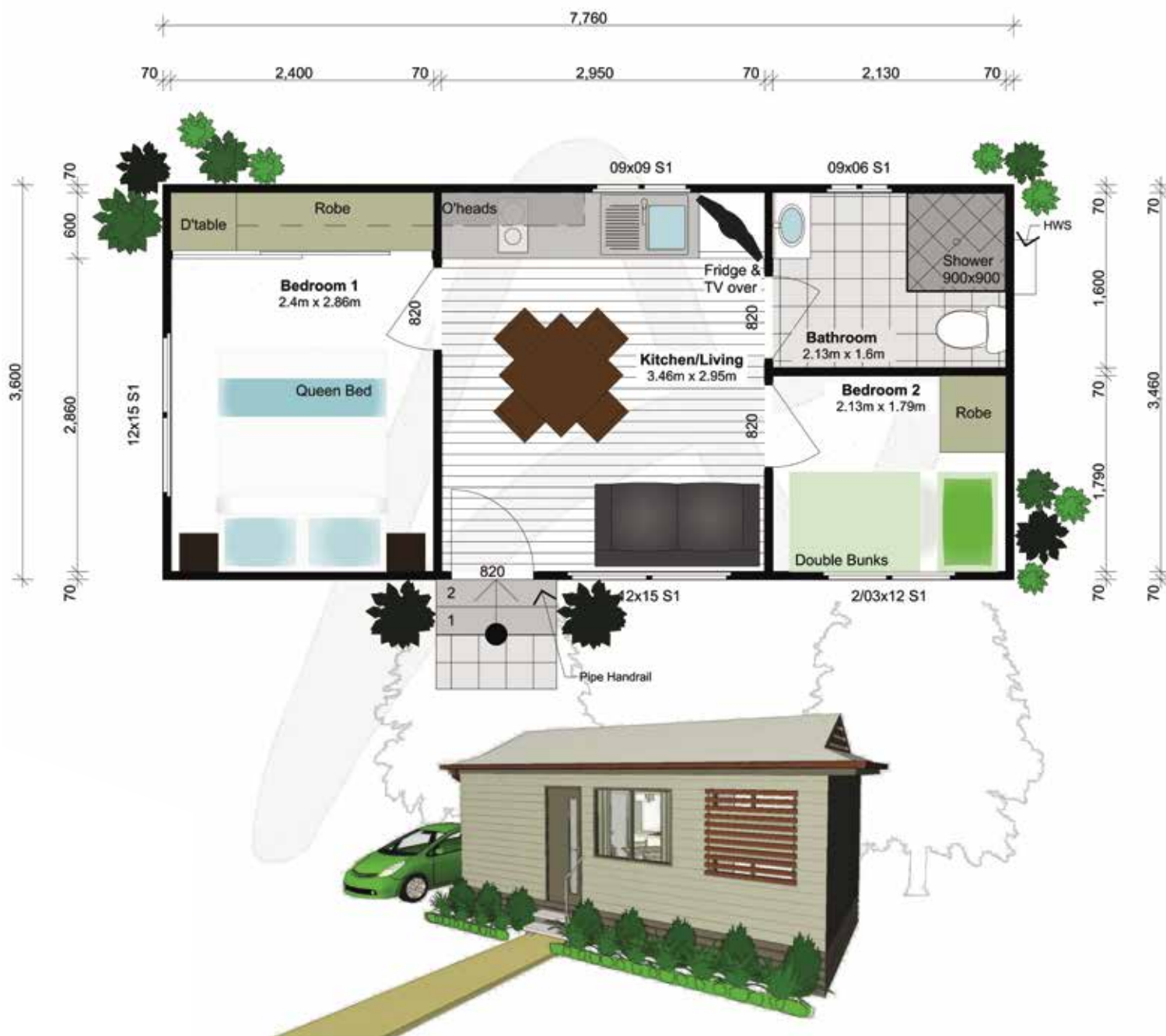
# Gympie

Area (m<sup>2</sup>): **27.94**  
Size (m): **7.76 x 3.6**



## VERSION NOTES

- Shown with 'Homestead' Roofline
- Shown with Slatted Gable infill Feature
- Shown with Slatted Window Shade Feature
- Shown with 'Madison 101' Front Door



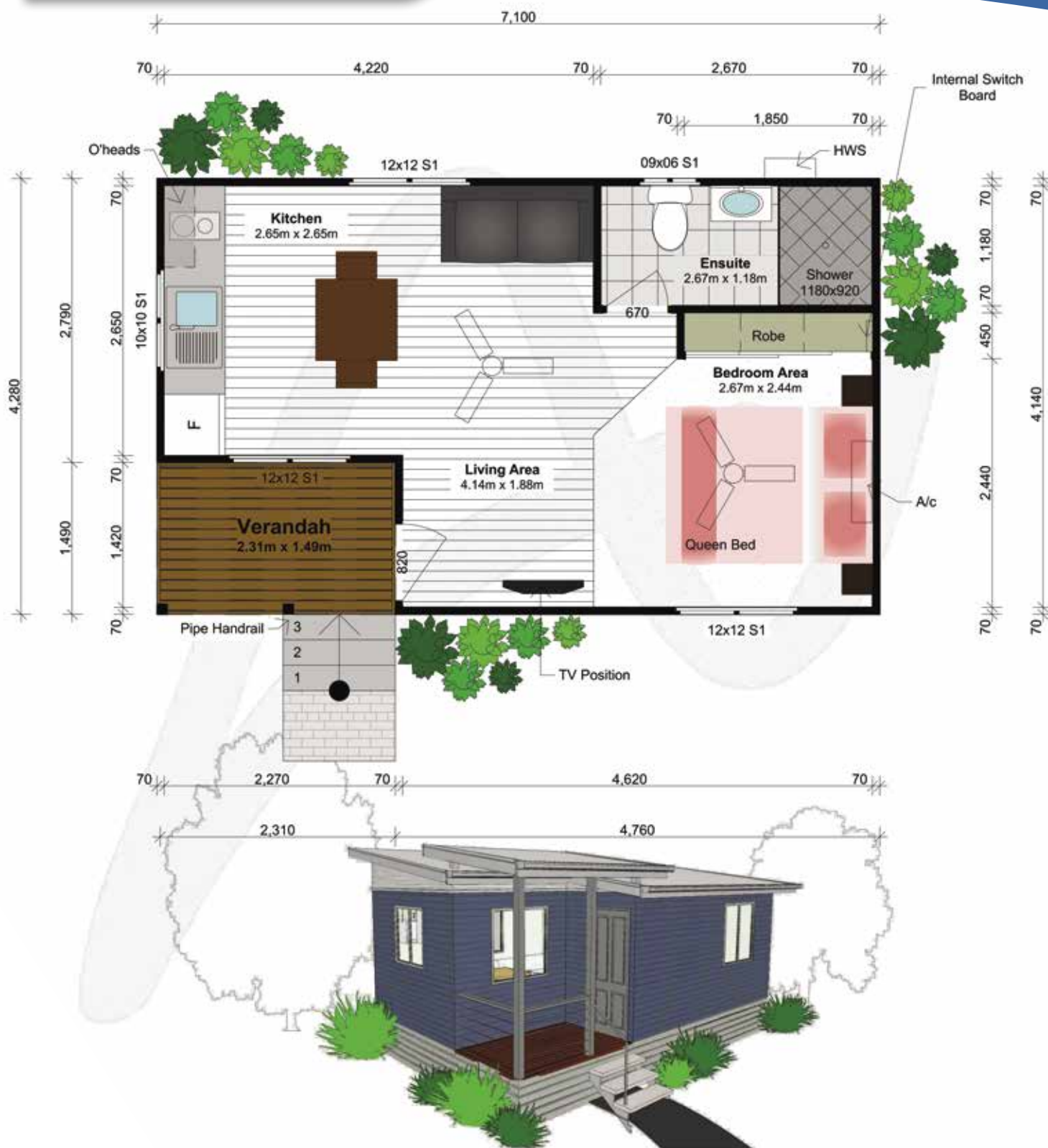
# Maple



Area (m<sup>2</sup>): **30.4** Size (m): **7.1 x 4.28** (incl. verandah)

## VERSION NOTES

- Shown with 8° Skillion Roofline
- Shown with Gable infill Feature Cladding
- Shown with Extenda Brackets to Verandah Roof
- Shown with 'Panelcarve 4' Front Door





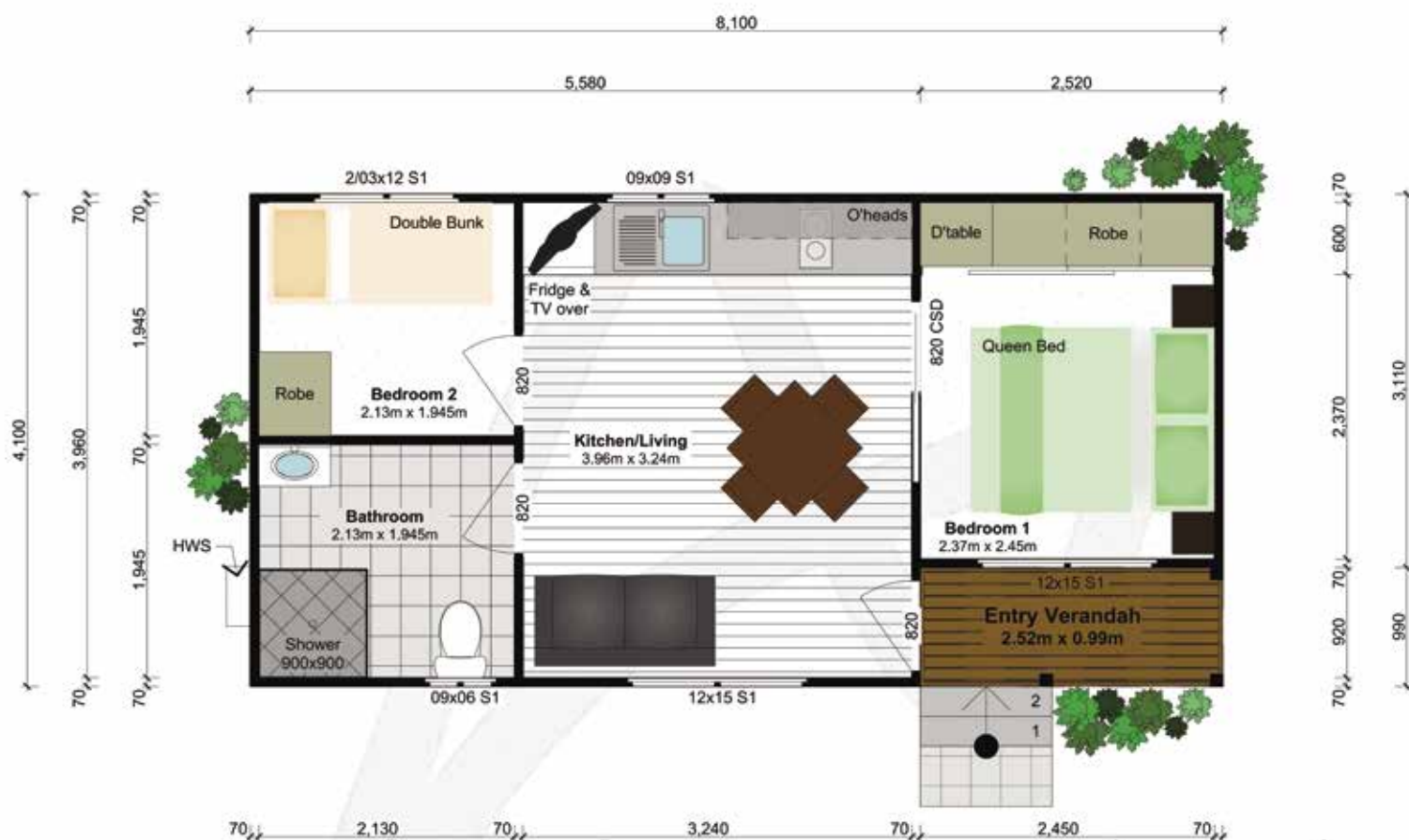
# Boronia



Area (m<sup>2</sup>): **33.21** Size (m): **8.1 x 4.1** (incl. verandah)

## VERSION NOTES

- Shown with Split Pitch Roofline





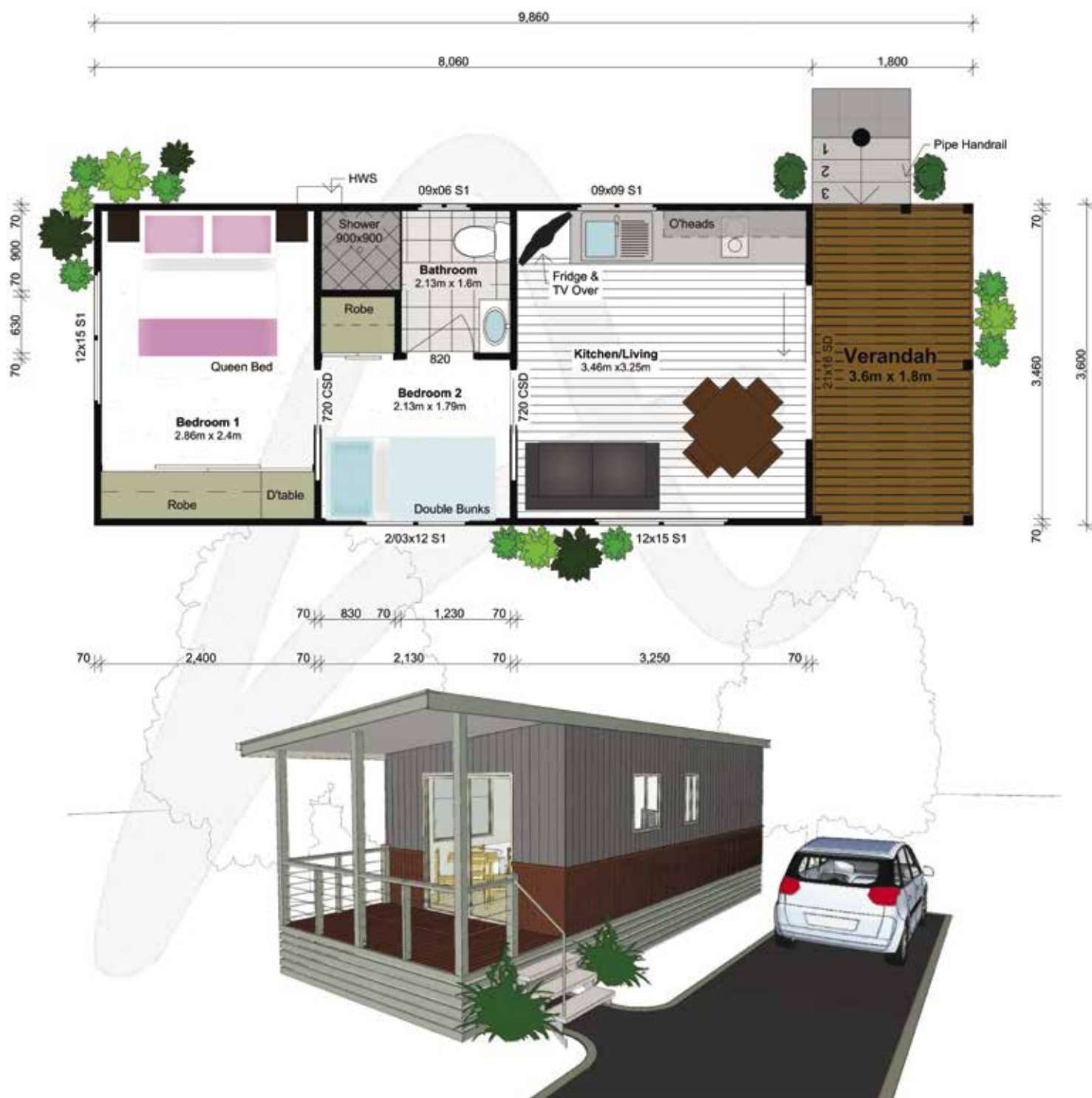
# Silky Oak

Area (m<sup>2</sup>): Size (m):  
**29** **8.06 x 3.6**  
**35.5** **9.86 x 3.6 (incl. verandah)**



## VERSION NOTES

- Shown with 6° Skillion Roofline
- Shown with 'Mediterranean' Cladding
- Shown with 'Denver' Feature Cladding



# Satinwood

Area (m<sup>2</sup>): Size (m):

**36.9** **8.66 x 4.26**

**44.6** **10.46 x 4.26** (incl. verandah)



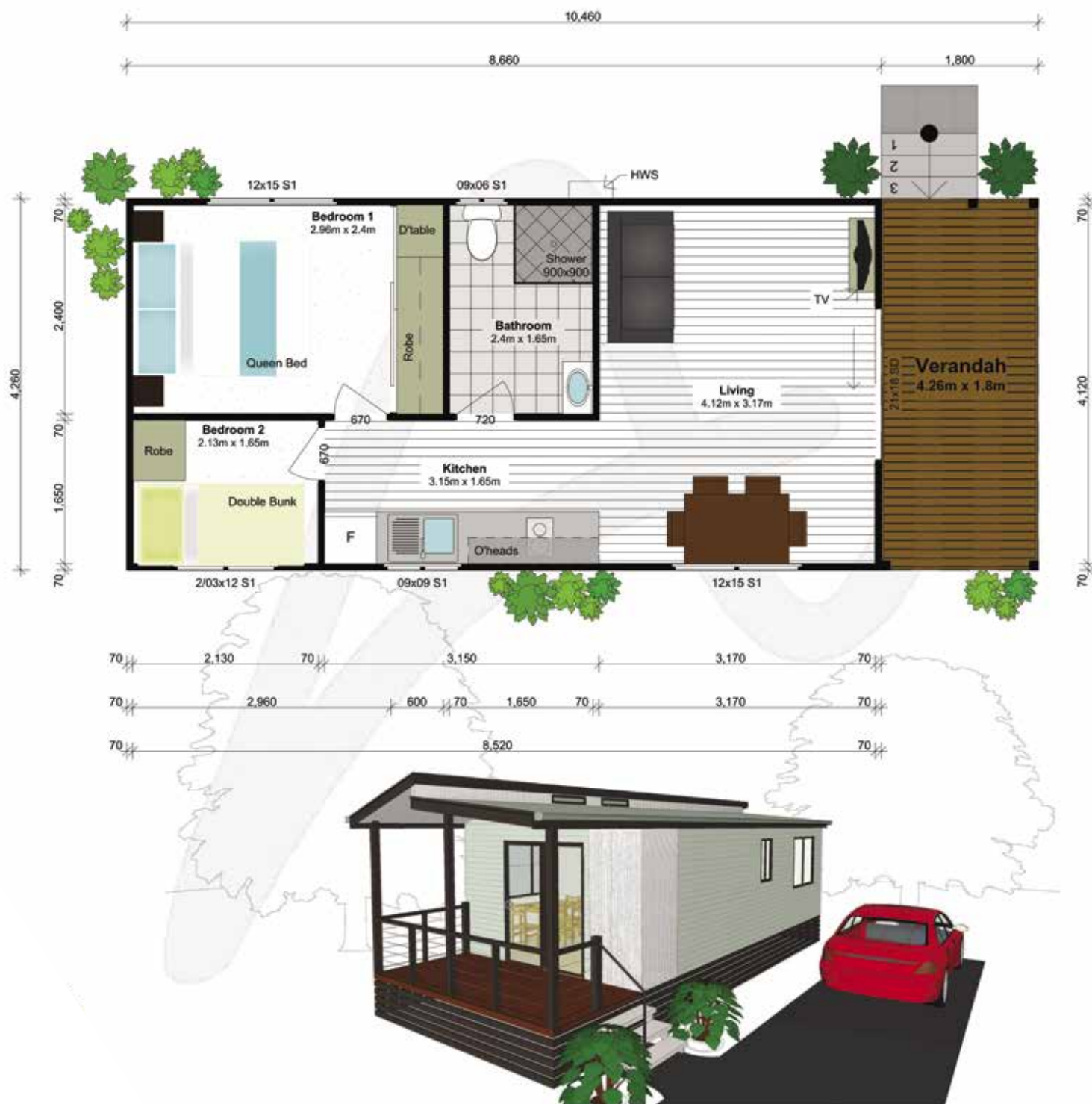
2



1

## VERSION NOTES

- Shown with Split Pitch Roofline
- Shown with 2 x Highlight Windows
- Shown with Vertical Colorbond Feature to Front Corner



 **2**  **1**

- Shown with 14° Skillion Roofline
- Shown with FC Cladding Option & 'Denver' Feature Cladding
- Shown with Slatted Feature to Verandah





# Camellia

Area (m<sup>2</sup>): Size (m):  
**36.97** **7.8 x 4.74**

**45.5** **9.6 x 4.74** (incl. verandah)



2



1

## VERSION NOTES

- Shown with 8° Skillion Roofline
- Shown with Colorbond Gable infill Feature Cladding



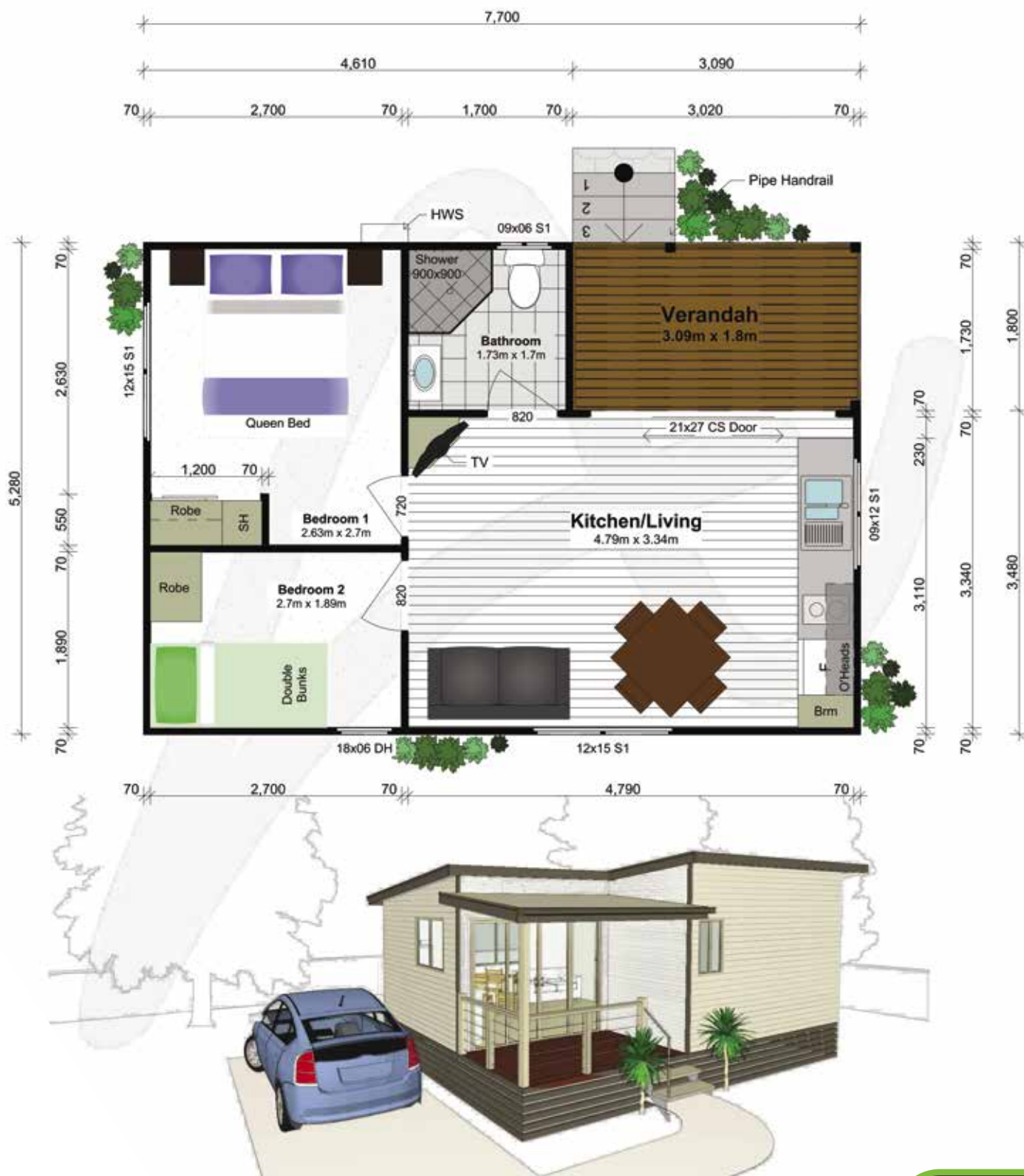
# Melaleuca



Area (m<sup>2</sup>): **40.66** Size (m): **7.7 x 5.28** (incl. verandah)

## VERSION NOTES

- Shown with 6° Skillion Roofline
- Shown with Colorbond Feature Cladding to Verandah Walls



# Jacaranda

Area (m<sup>2</sup>): Size (m):

**36.5** **8.7 x 4.2**

**44.1** **10.5 x 4.2 (incl. verandah)**



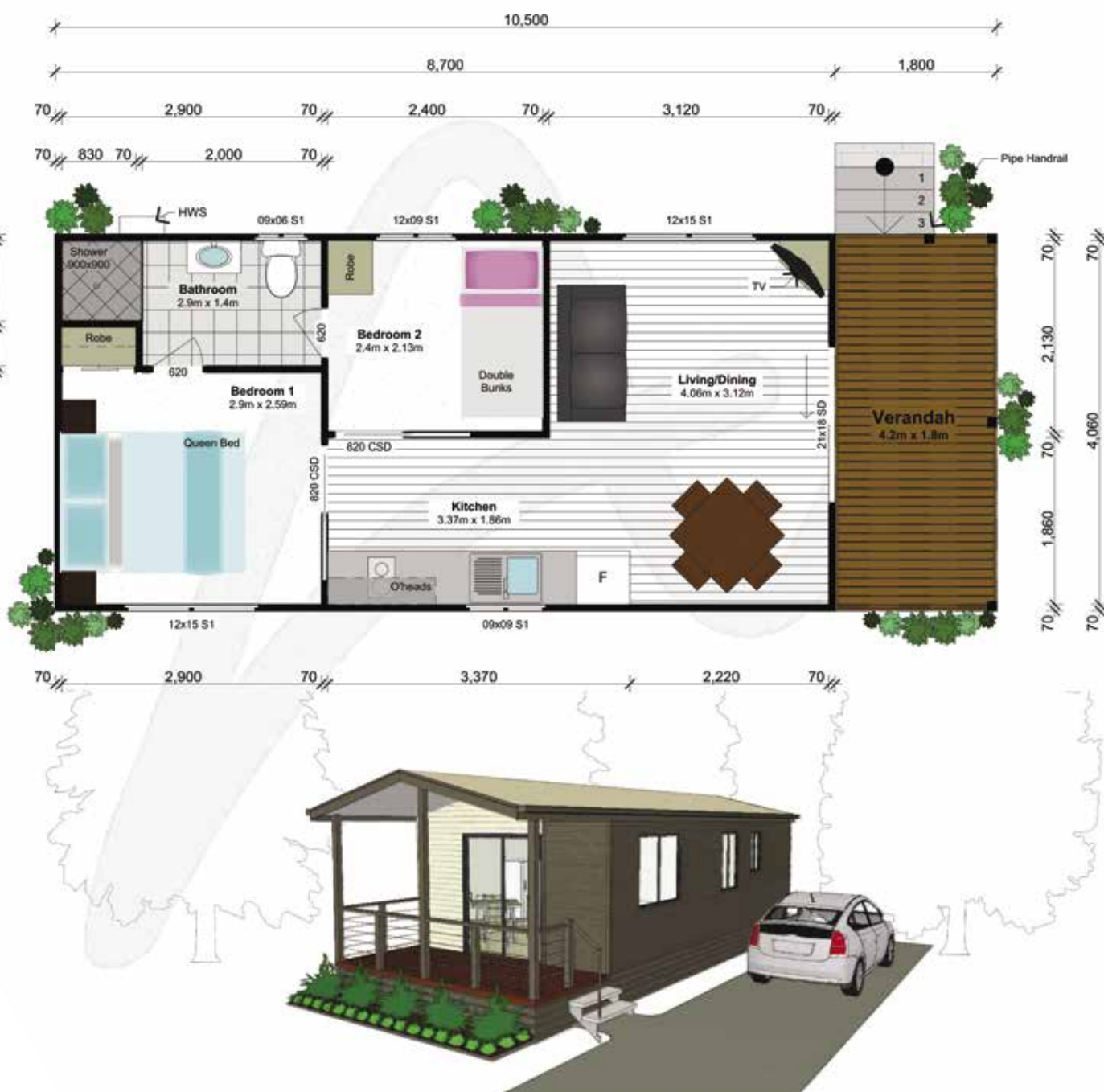
2



1

## VERSION NOTES

- Shown with Colorbond Feature to External Wall





# Terang



Area (m<sup>2</sup>): **41.4** Size (m): **9.0 x 4.6** (excl. verandah)

## VERSION NOTES

- Shown with 12° Skillion Roofline
- Shown with Colorbond Gable infill Cladding Feature
- Shown with Slatted Feature to Verandah
- Shown with Sloping Verandah Post Feature
- Shown with Feature Window Awnings



# Cypress



Area (m<sup>2</sup>): **51.4** Size (m): **10.8 x 4.76** (incl. verandah)

## VERSION NOTES

- Shown with 8° Skillion Roofline
- Shown with 'Denver' Feature Cladding
- Shown with Exposed Rafter Tails Feature



# Wattle

Area (m<sup>2</sup>): **45.9**  
**54**

Size (m): **10.2 x 4.5**  
**12.0 x 4.5** (incl. verandah)



## VERSION NOTES

- Shown with 9° Skillion Roofline
- Shown with 'Preston' Feature Cladding





# Waratah

Area (m<sup>2</sup>): Size (m):

45.9

10.2 x 4.5

54

12.0 x 4.5 (incl. verandah)



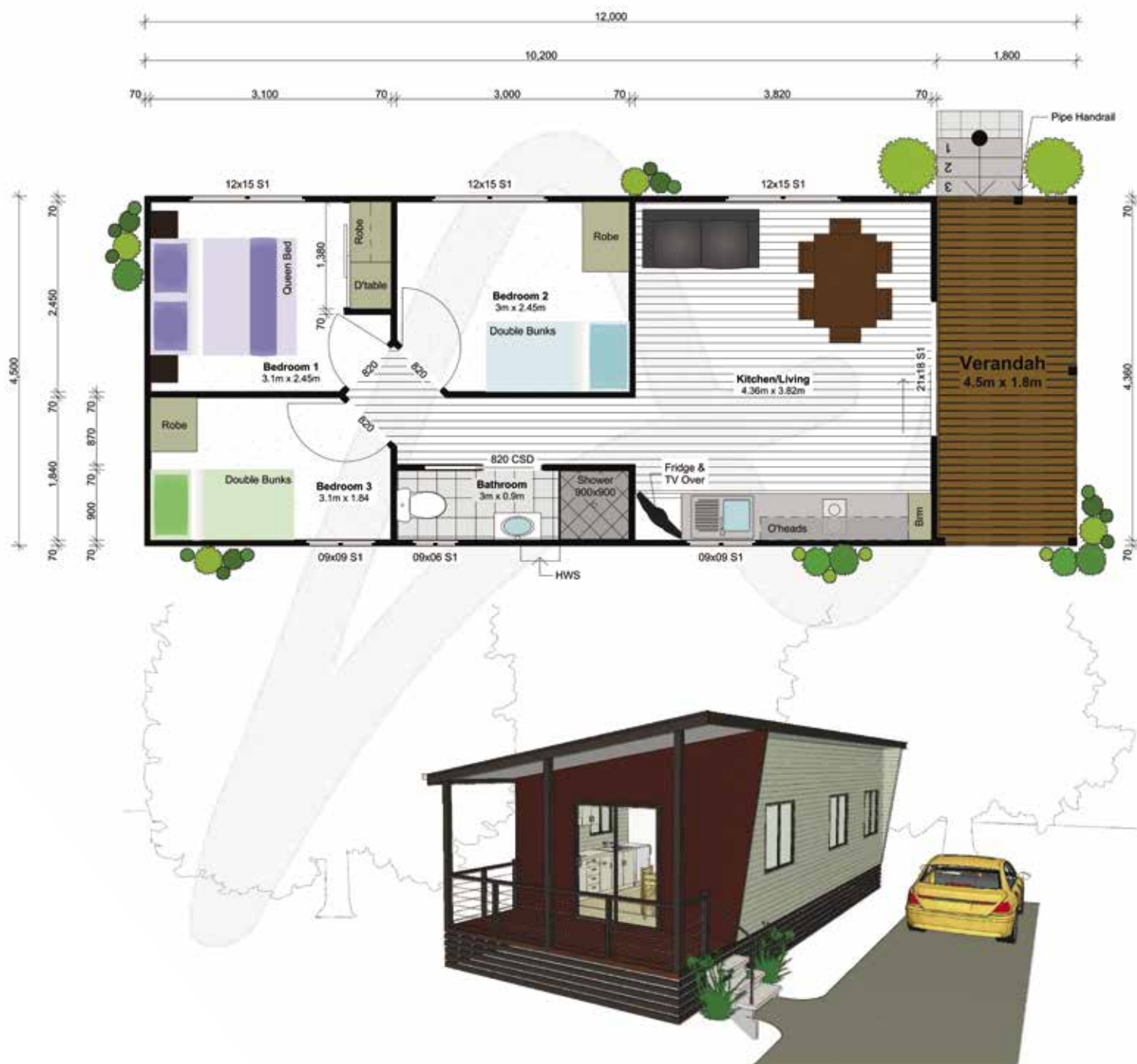
3



1

## VERSION NOTES

- Shown with 9° Skillion Roofline
- Shown with Sloping External Wall Features
- Shown with Colorbond Feature to Verandah Wall



# Grevillia

Area (m<sup>2</sup>): Size (m):  
**45.9** **9.0 x 5.1**  
**55.08** **10.8 x 5.1** (incl. verandah)



## VERSION NOTES

- Shown with Gable infill Cladding Feature & Level Ceiling to Verandah
- Shown with Verandah Bracket Feature



# Bunya Pine



2

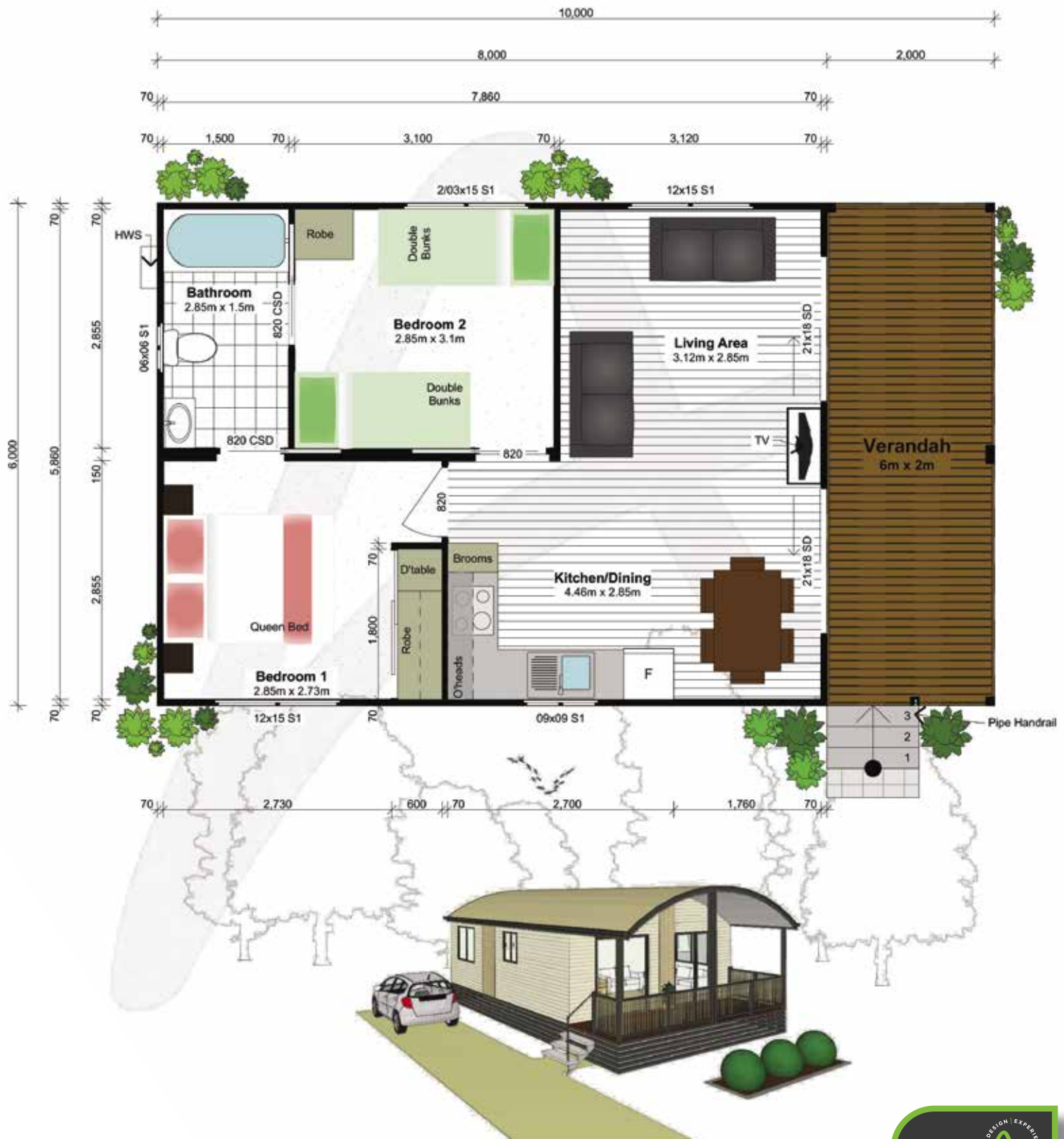


1

Area (m<sup>2</sup>): **60** Size (m): **10.0 x 6.0** (incl. verandah)

## VERSION NOTES

- Shown with 'The Coast' Roofline
- Shown with 'California' Cladding Feature
- Shown with Vertical Slat Balustrade



Tourist/Caravan Park



# Kauri Pine



Area (m<sup>2</sup>): **63.7** Size (m): **9.1 x 7.0** (incl. verandah)

## VERSION NOTES

- Shown with 'The Rocks' Roofline
- Shown with Colorbond Feature to External Wall



# Angophora

Area (m<sup>2</sup>): Size (m):

**52.02** **10.2 x 5.1**

**61.2** **12.0 x 5.1 (incl. verandah)**



2



1

## VERSION NOTES

- Shown with Colorbond Feature Wall
- Shown with Split Pitch Roofline



Tourist/Caravan Park

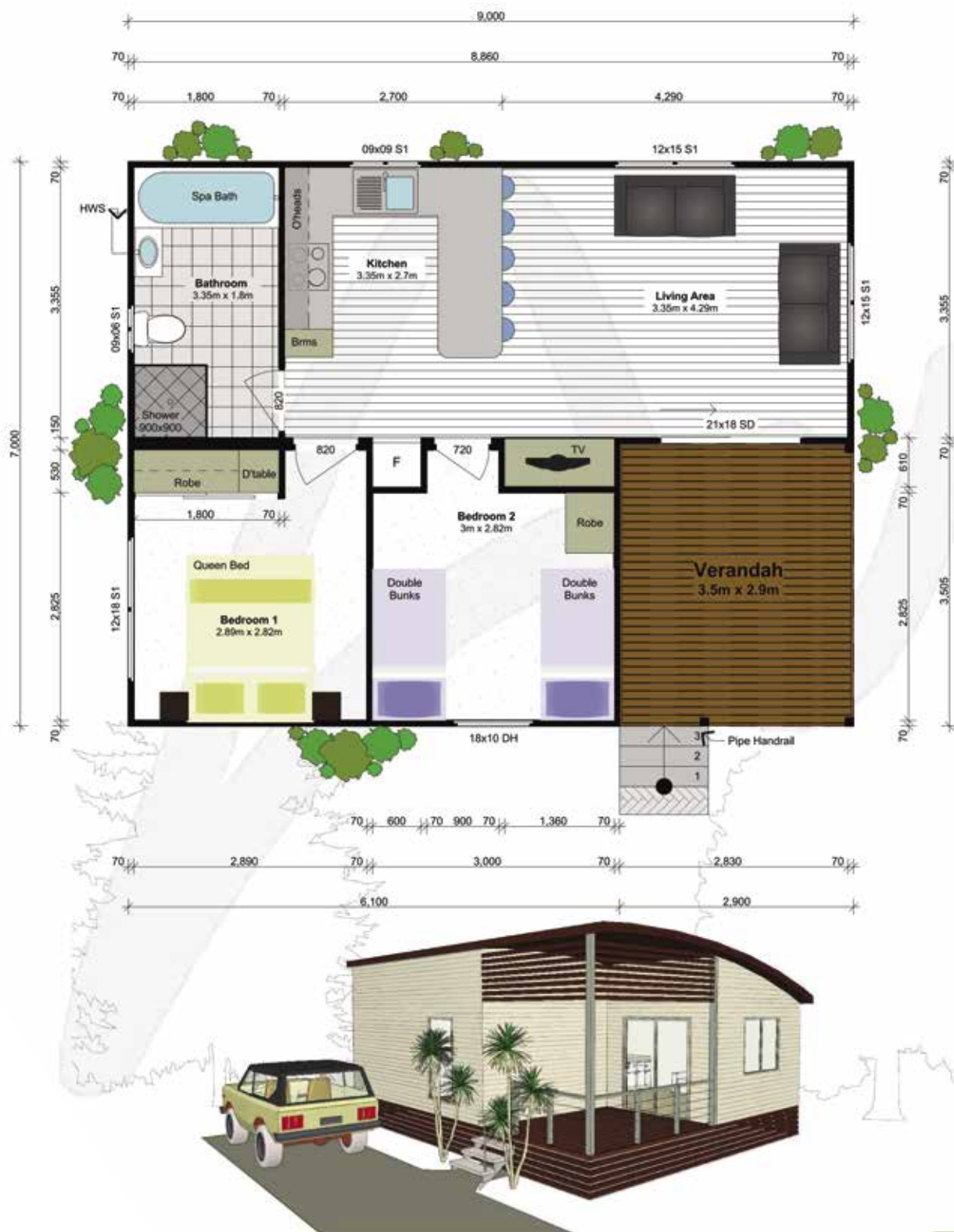
# Salt Bush



Area (m<sup>2</sup>): **63** Size (m): **9.0 x 7.0** (incl. verandah)

## VERSION NOTES

- Shown with 'The Wave' Roofline
- Shown with Slatted Gable infill Feature





# Cassinia

Area (m<sup>2</sup>): Size (m):

**56.1** **11.0 x 5.1**

**65.28** **12.8 x 5.1 (incl. verandah)**



2



1

## VERSION NOTES

- Shown with 14° Skillion Roofline
- Shown with Slatted Feature to Verandah
- Shown with Colorbond Feature to Verandah Wall



# Hibiscus

Area (m<sup>2</sup>): Size (m):

**63.36** **12.0 x 5.28**

**72.86** **13.8 x 5.28** (incl. verandah)



3



2

## VERSION NOTES

- Shown with 'The Wave' Roofline
- Shown with Slatted Feature to Verandah
- Shown with Colorbond Gable infill Feature



# Cape Chestnut



Area (m<sup>2</sup>): **73.2**  
Size (m): **12.2 x 6.0**

## VERSION NOTES

- Shown with Split Pitch Roofline
- Shown with 'California' Cladding Feature



Tourist/Caravan Park



# Ironbark

Area (m<sup>2</sup>): **64.26**  
Size (m): **12.6 x 5.1**



## VERSION NOTES

- Shown with Gable Infill Feature
- Shown with 'Homestead' Roofline with 24° Roof Pitch
- Shown with Extenda Brackets Feature
- Shown with 'Preston' Cladding Feature



# Mahogany

Area (m<sup>2</sup>): **66.25**      Size (m): **12.5 x 5.3**



3



2

## VERSION NOTES

- Shown with Split Pitch Roofline
- Shown with Extenda Brackets Feature to Verandah



# Blackbutt

Area (m<sup>2</sup>): **90.67**  
Size (m): **12.0 x 7.215/8.125**  
(incl. verandah)



## VERSION NOTES

- Shown with *Split Pitch Roofline*
- Shown with *Colorbond Gable infill Cladding Feature*
- Shown with 'Madison 101' Front Door





# Snow Gum



Area (m<sup>2</sup>): Size (m):  
**81 10.8 x 7.5** (incl. verandah)

## VERSION NOTES

- Shown with 'The Coast' Roofline
- Shown with 'Denver' Cladding Feature
- Shown with Slatted Gable Feature
- Shown with FC Cladding



# Tallowood



# 3



2

Area (m<sup>2</sup>): **108.54**      Size (m): **13.4 x 8.10** (incl. verandah)

## VERSION NOTES

- Shown with Split Pitch Roofline
- Shown with Extenda Brackets Feature to Verandah
- Shown with 'Preston' Feature Cladding with a twist
- Shown with Gable infill Feature Cladding



# Silky Oak

Area (m<sup>2</sup>):    Size (m):

**47.61      9.28 x 5.13**

**56.84      11.08 x 5.13 (incl. verandah)**



2



1

## VERSION NOTES



## Disabled Access



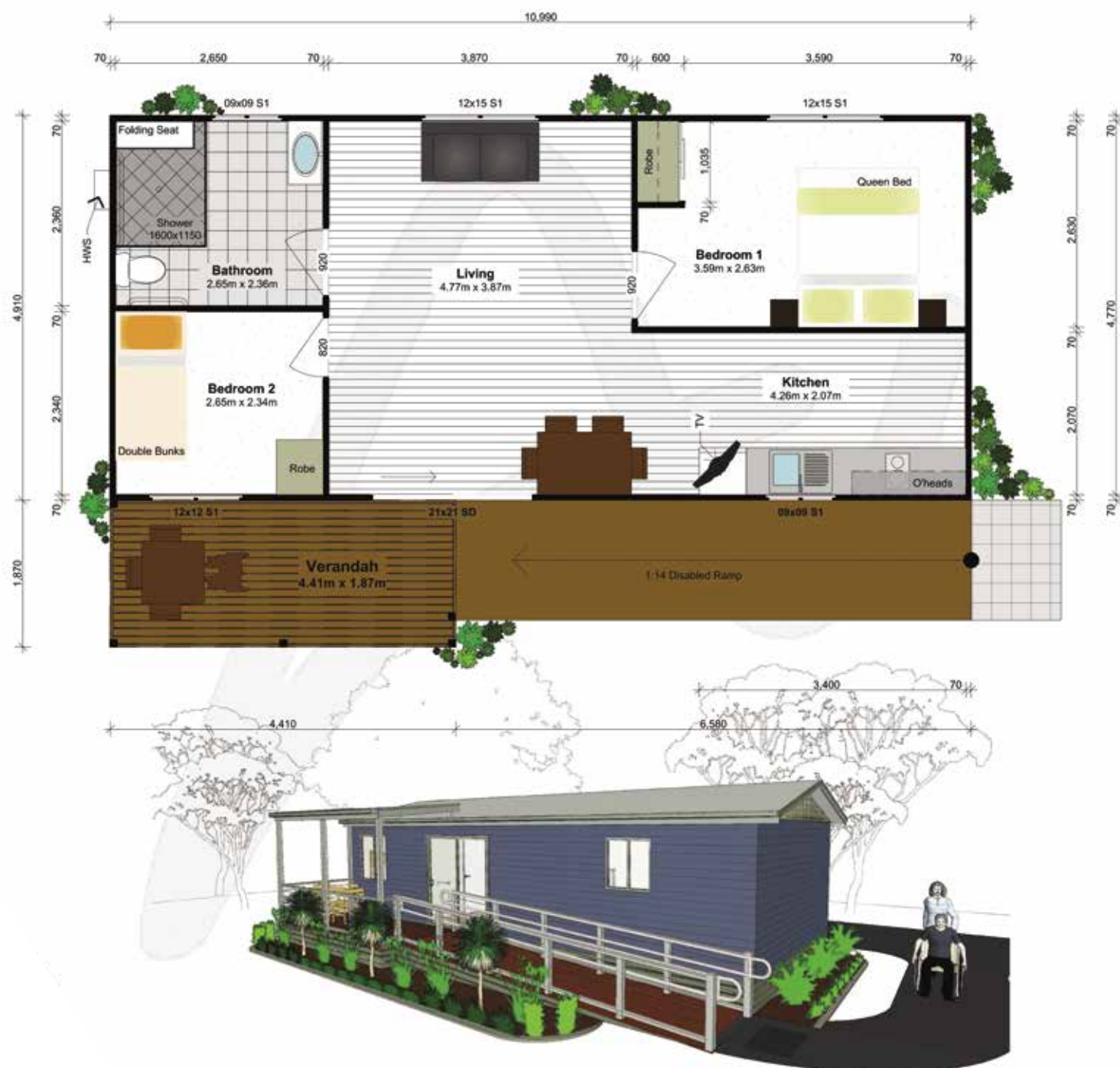
# Terang

 2  1

Area (m<sup>2</sup>): **53.96**    Size (m): **10.99 x 4.91**

## VERSION NOTES

- Shown with Gable Infill Feature Cladding
- Shown with Extenda Brackets to Verandah Roof



# Wattle

Area (m<sup>2</sup>): Size (m):

**56.43** **11.0 x 5.13**

**69.26** **13.5 x 5.13** (incl. verandah)



2



1

## VERSION NOTES

- Shown with Split Pitch Roofline
- Shown with Colorbond Feature Wall



# Angophora Mk II

Area (m<sup>2</sup>): Size (m):

**69.67** **13.58 x 5.13**

**78.90** **15.38 x 5.13 (incl. verandah)**



3



1

## VERSION NOTES

- Shown with Split Pitch Roofline
- Shown with 'Denver' Colorbond Cladding Feature



Disabled Access



# Blue Gum

Area (m<sup>2</sup>): **77.21**  
Size (m): **14.75 x 5.10/8.10**  
(incl verandah)



3



1

## VERSION NOTES

- Shown with Split Pitch Roofline
- Shown with Colorbond Feature Wall
- Shown with 'Extenda Brackets' Feature to Verandah Wall



# Eucalypt

Area (m<sup>2</sup>): Size (m):

**40** **10 x 4.0**

**47.2** **11.8 x 4.0 (incl. verandah)**



1



1

## VERSION NOTES

- Shown with 11° Skillion Roof
- Shown with Painted Slat Gable infill Feature



# Wattle Mk 2

Area (m<sup>2</sup>): Size (m):

45 10 x 4.5

53.1 11.8 x 4.5 (incl. verandah)



2



1

## VERSION NOTES

- Shown with Split Pitch Roofline
- Shown with Vertical Cladding Feature to Front and Rear Corner





# Mallee Mk 2

Area (m<sup>2</sup>): Size (m):  
**51** **10 x 5.1**  
**60.18** **11.8 x 5.1 (incl. verandah)**



2



1

## VERSION NOTES

- Shown with 'The Wave' Roofline
- Shown with Sloping Verandah Post Feature
- Shown with Painted Feature to Front Wall & Rear Corner



# Angophora Mk2

Area (m<sup>2</sup>): Size (m):

52 10.2 x 5.1

61.2 12 x 5.1 (incl. verandah)



2



1

## VERSION NOTES

- Shown with Gable Feature infill
- Shown with Painted Slat Window Shades
- Shown with Slatted Feature to Verandah



# Jarrah



Area (m<sup>2</sup>): **63.45** Size (m): **14.1 x 4.5** (incl. verandah)

## VERSION NOTES

- Shown with 'The Coast' Roofline
- Shown with Colorbond Cladding Feature to Verandah
- Shown with Painted Gable infill Feature





# Coriander



3



1

Area (m<sup>2</sup>):    Size (m):

75.48

**14.8 x 5.1** (incl. verandah)

## VERSION NOTES

- Shown with Colorbond Cladding Feature to Verandah



# Terang Mk II

 2  1

Area (m<sup>2</sup>): 60.9  
Size (m): 11.95 x 5.1

## VERSION NOTES

- Shown with Painted Slat Feature to Verandah



# Iuka



2



1

Area (m<sup>2</sup>):    Size (m):

**71.4**      **14.0 x 5.1** (incl. verandah)

## VERSION NOTES

- Shown with Split Pitch Roofline
- Shown with Colorbond Feature to External Wall
- Shown with Feature Window Awnings





# Pembroke

 2  1

Area (m<sup>2</sup>): **64.8** Size (m): **14.4 x 4.5** (incl. verandah)

## VERSION NOTES

- Shown with Skillion Roof
- Shown with Colorbond Gable infill Feature
- Shown with Extenda Bracket Feature to Verandah Roof



# Red Gum

Area (m<sup>2</sup>): Size (m):

**67.32** **13.2 x 5.1**

**76.5** **15 x 5.1 (incl. verandah)**



## VERSION NOTES

- Shown with 9° Skillion Roof
- Shown with Eaves to Sides
- Shown with Angled Walls to Front and Rear
- Shown with Colorbond Feature to Verandah Wall



# Kurrajong



Area (m<sup>2</sup>): **81.1** Size (m): **10.8 x 7.51** (incl. verandah)

## VERSION NOTES

- Shown with Split Pitch 'The Coast' Roofline
- Shown with Vertical Cladding Feature to Front Corner
- Shown with Gable infill Feature
- Shown with Painted Slat Feature to Verandah





# Blue Gum



3



1

Area (m<sup>2</sup>):    Size (m):

**75.23**      **14.75 x 5.10/8.10** (incl. verandah)

## VERSION NOTES

- Shown with 9° Skillion Roofline
- Shown with Colorbond Gable infill Feature



# Bougainvillea

 2  1

Area (m<sup>2</sup>): **73.08** Size (m): **12.0 x 6.09**

## VERSION NOTES

- Shown with Colorbond Gable Infill Feature
- Shown with Colorbond Feature to External Wall



# Habea



Area (m<sup>2</sup>): **88.5** Size (m): **11.8 x 7.5** (incl. verandah)

## VERSION NOTES

- Shown with Split Pitch Roofline
- Shown with 02x09 FG Skylight Window
- Shown with Painted Slat Feature to Verandah Gable





# Crows Ash



Area (m<sup>2</sup>): 90  
Size (m): 12.0 x 7.5 (incl. verandah)

## VERSION NOTES

- Shown with 'The Wave' Roofline
- Shown with Feature Window Awnnings
- Shown with Painted Slat Feature to Verandah



# Wollemi Pine



Area (m<sup>2</sup>): Size (m):  
**89.09 17.47 x 5.1** (excl. verandah)

## VERSION NOTES

- Shown with 'Preston' Vertical Cladding Feature
- Shown with Extenda Bracket Feature to Verandah Roof



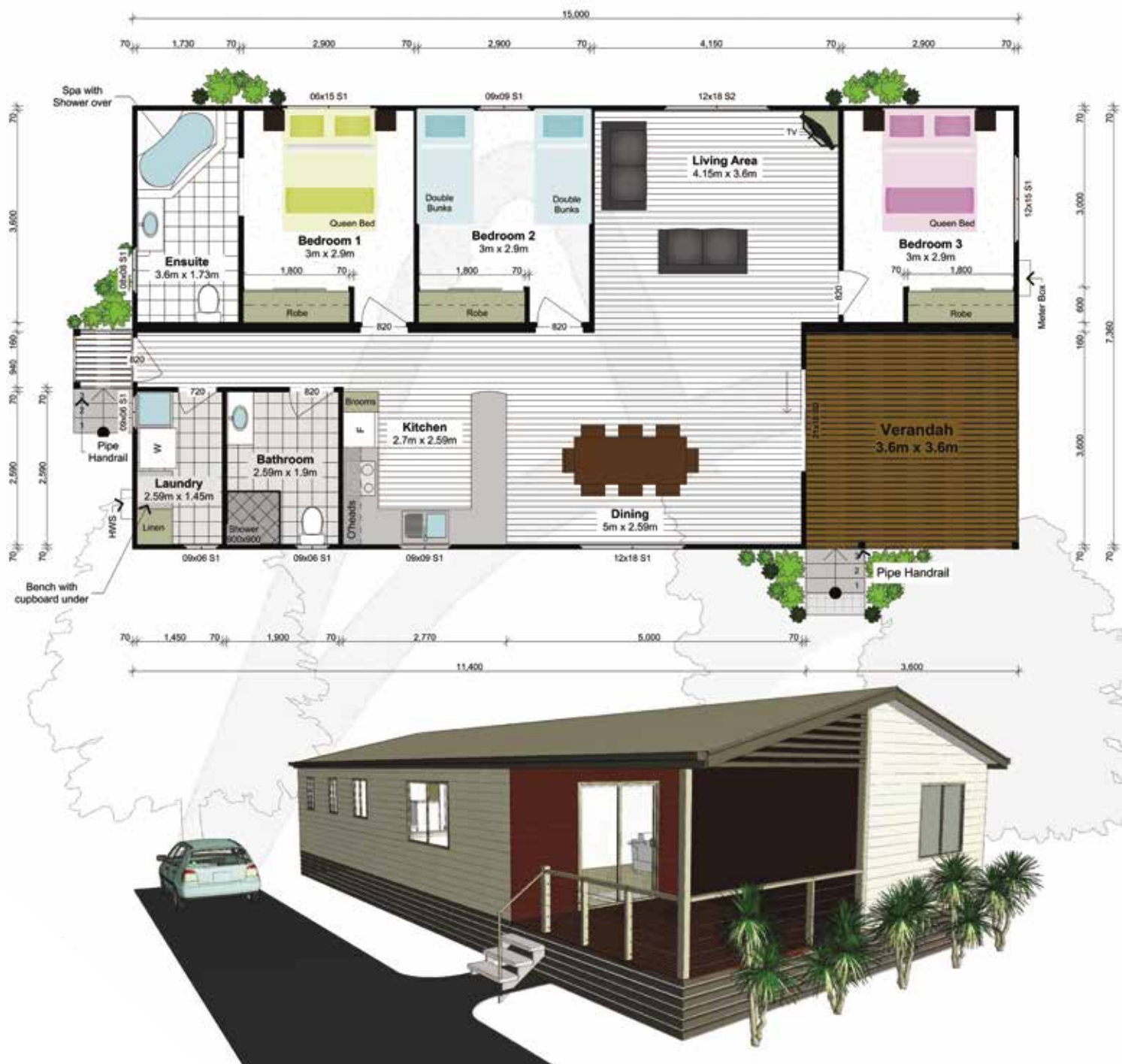
# Baobab

 3  2

Area (m<sup>2</sup>): Size (m):  
**112.5 15.0 x 7.5** (incl. verandah)

## VERSION NOTES

- Shown with Painted Feature to Verandah Wall
- Shown with Painted Slat Feature to Verandah Gable





# Water Gum



Area (m<sup>2</sup>): Size (m):  
**123.95 19.07 x 6.5** (incl. verandah)

## VERSION NOTES

- Shown with Split Pitch Roof
- Shown with 2 x 02x09 FG Skylight Windows
- Shown with Extenda Bracket Feature to Verandah Roof
- Shown with Vertical Painted Cladding Feature to Verandah Wall



# Ghost Gum



Area (m<sup>2</sup>): **133.12** Size (m): **17.75 x 7.5** (incl. verandah)

## VERSION NOTES

- Shown with Painted Feature to Front Walls



# Banksia

Area (m<sup>2</sup>): **40.05** Size (m): **10.8 x 3.59** (incl. verandah)  
1 side only



1



1

## VERSION NOTES

- Shown with Split Pitch Roofline
- Shown with Colorbond Feature to Centre Wall and Box Out Feature





# Jarrah

Area (m<sup>2</sup>): Size (m):

**63.45** **14.1 x 4.5** (incl. verandah)

1 side only



2



1

## VERSION NOTES

- Shown with Split Pitch Roofline
- Shown with Colorbond Feature to Verandah Walls



# Red Gum

Area (m<sup>2</sup>): **76.5**  
 Size (m): **15.0 x 5.1** (incl. verandah)  
 1 side only



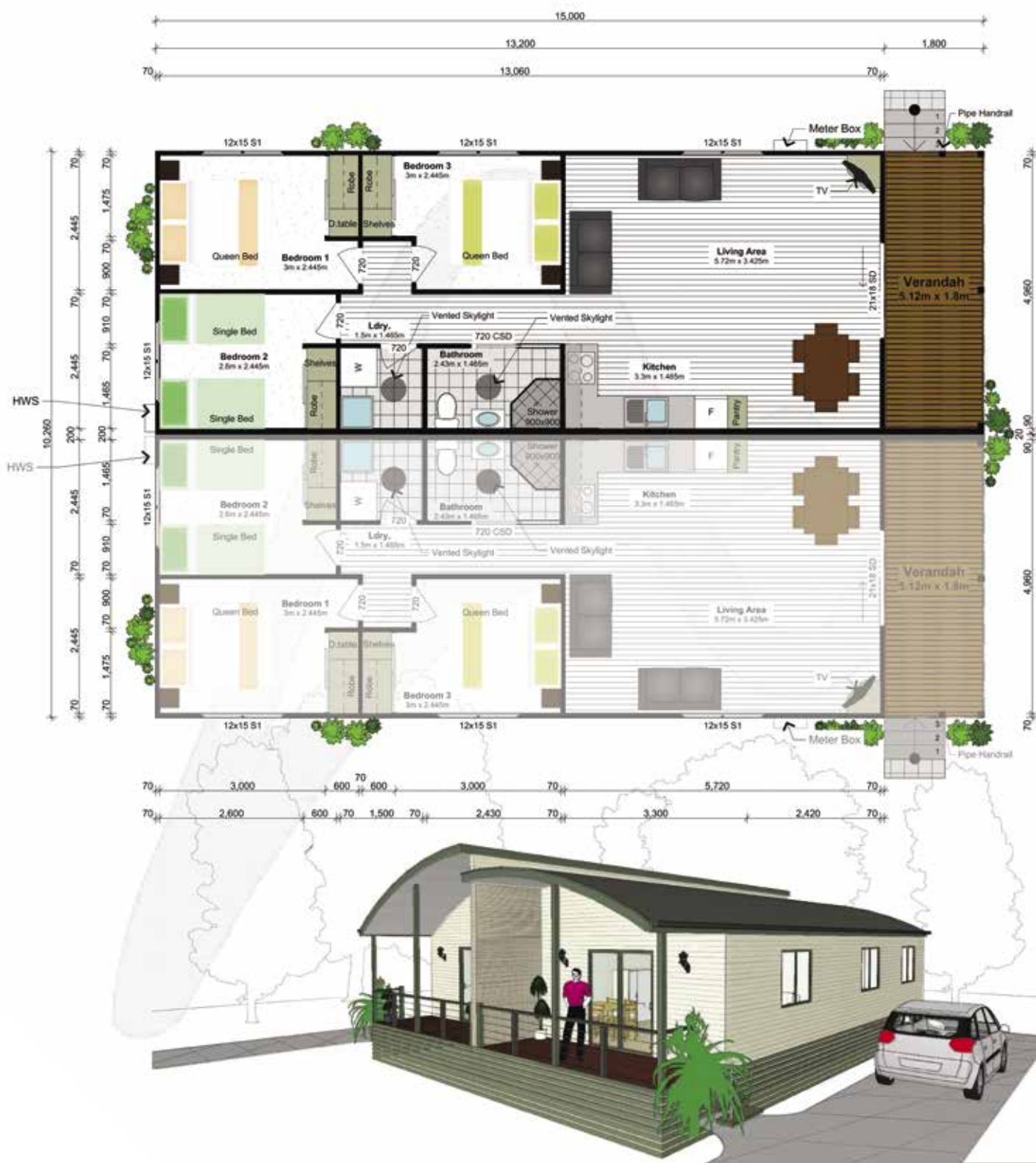
3



1

## VERSION NOTES

- Shown with Split Pitch 'The Wave' Roofline
- Shown with Stone Look Feature to Centre Wall





# Wollemi Pine



Area (m<sup>2</sup>): Size (m):  
**89.097 17.47 x 5.1** 1 side only

## VERSION NOTES

- Shown with 'Preston' Cladding Feature
- Shown with Extenda Bracket Feature to Verandah Roof






# Get Away

Area (m<sup>2</sup>): **36.7**  
**49.6**

Size (m): **6.8 x 5.4**  
**9.2 x 5.4** (incl. verandah)

 **1**



1



1

## VERSION NOTES

- Shown with 14° pitch with curved ridge line roof line
- Shown with colorbond feature panel to exterior wall



## Bed and Breakfast/Farm Stay

# Escape

Area (m<sup>2</sup>):    Size (m):

**48.6**      **9.0 x 5.4**

**61.5**      **11.4 x 5.4** (incl. verandah)



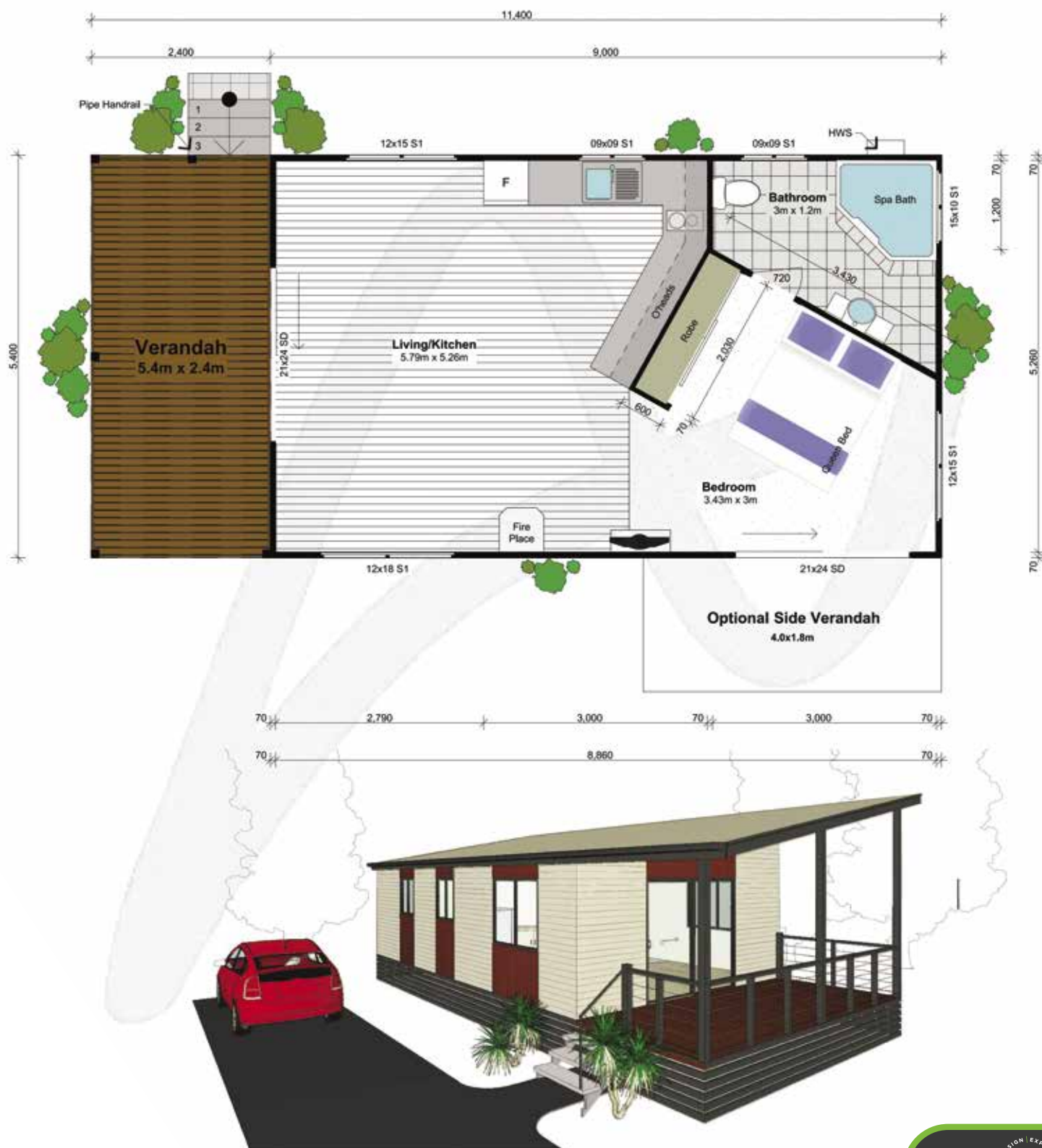
1



1

## VERSION NOTES

- Shown with 11° 'Skyline' roof line
- Shown with 'Preston' cladding feature



## Bed and Breakfast/Farm Stay

# Retreat

Area (m<sup>2</sup>): **55.2**      Size (m): **8.5 x 6.5** (incl. verandah)



1



1

## VERSION NOTES

- Shown with 'The Coast' roof line
- Shown with colorbond cladding to verandah walls



## Bed and Breakfast/Farm Stay



# Seclusion

Area (m<sup>2</sup>): Size (m):  
**40** **9.7 x 4.13**

**52.4** **12.7 x 4.13** (incl. verandah)



1



1

## VERSION NOTES

- Shown with 12° 'Skyline' roof line
- Shown with colorbond cladding to gable infill



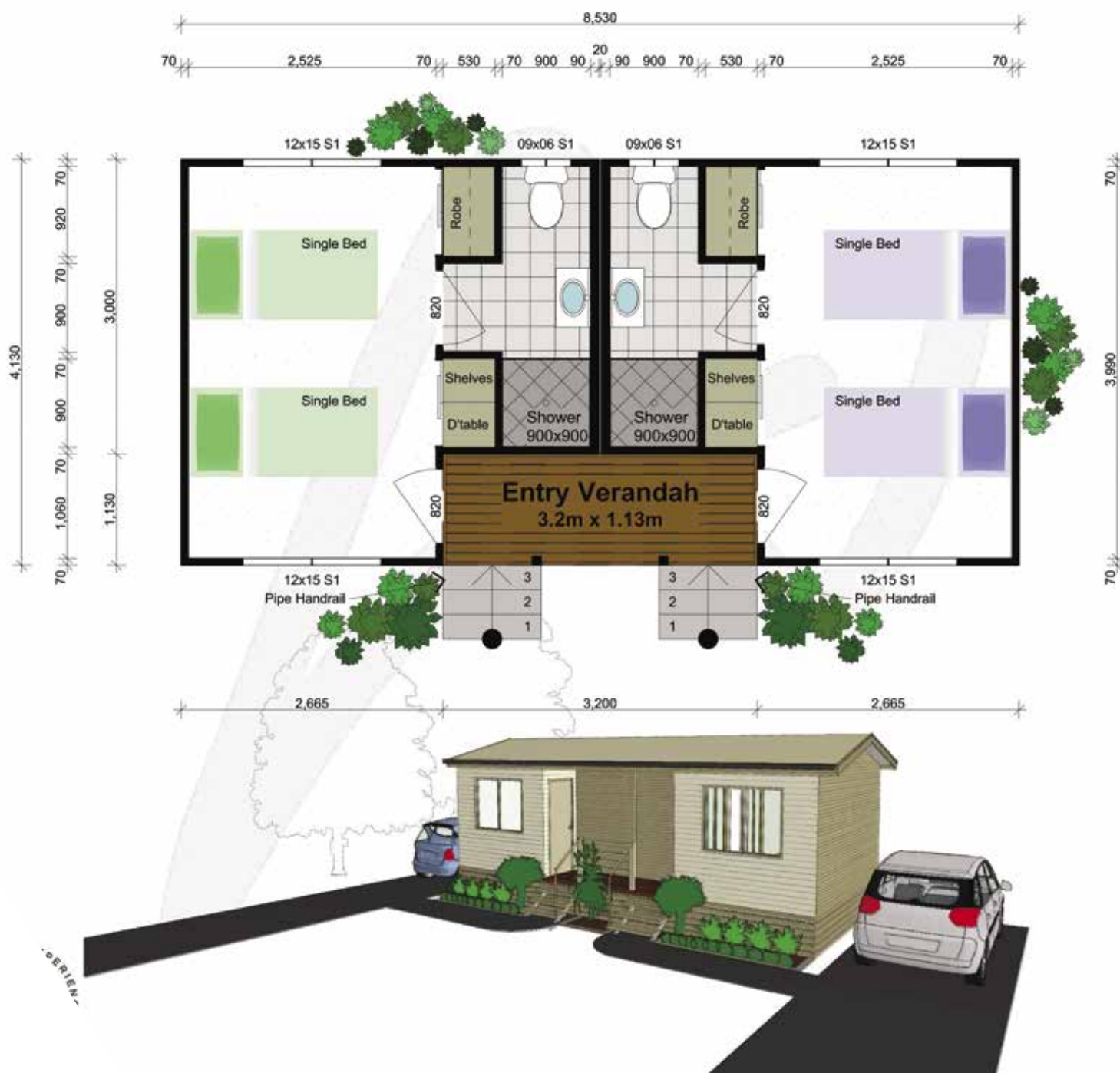
# Blue Gum 1



Area (m<sup>2</sup>): **35.23** Size (m): **8.53 x 4.13** (incl. verandah)

## VERSION NOTES

- Shown with Colorbond Cladding feature to End Wall and Verandah Wall



# Blue Gum 2



Area (m<sup>2</sup>): **41.83** Size (m): **10.13 x 4.13** (incl. verandah)

## VERSION NOTES

- Shown with Colorbond Cladding Feature to front Wall





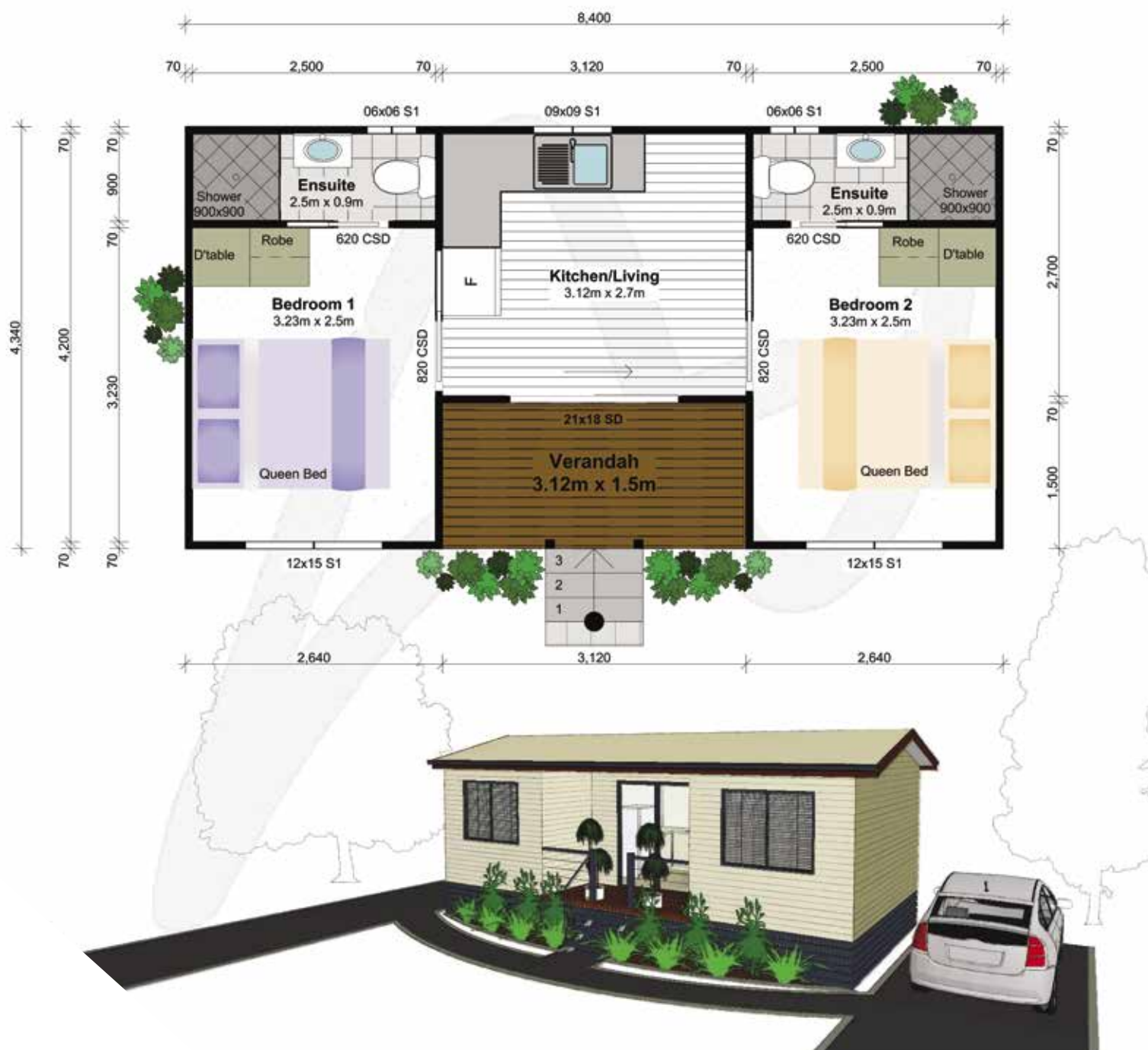
# Bottlebrush 1



Area (m<sup>2</sup>): **36.46** Size (m): **8.4 x 4.34** (incl. verandah)

## VERSION NOTES

- Shown with standard 14° gable roof



# Bottlebrush 2



Area (m<sup>2</sup>): **45.45** Size (m): **10.38 x 4.34** (incl. verandah)

## VERSION NOTES

- Shown with standard 14° gable roof



# Correa 3Rm 1



Area (m<sup>2</sup>): **35.83** Size (m): **8.37 x 4.28** (incl. verandah)

## VERSION NOTES

- Shown with standard 14° gable roof





# Correa 3Rm 2



Area (m<sup>2</sup>): **45.58** Size (m): **10.65 x 4.28** (incl. verandah)

## VERSION NOTES

- Shown with standard 14° gable roof



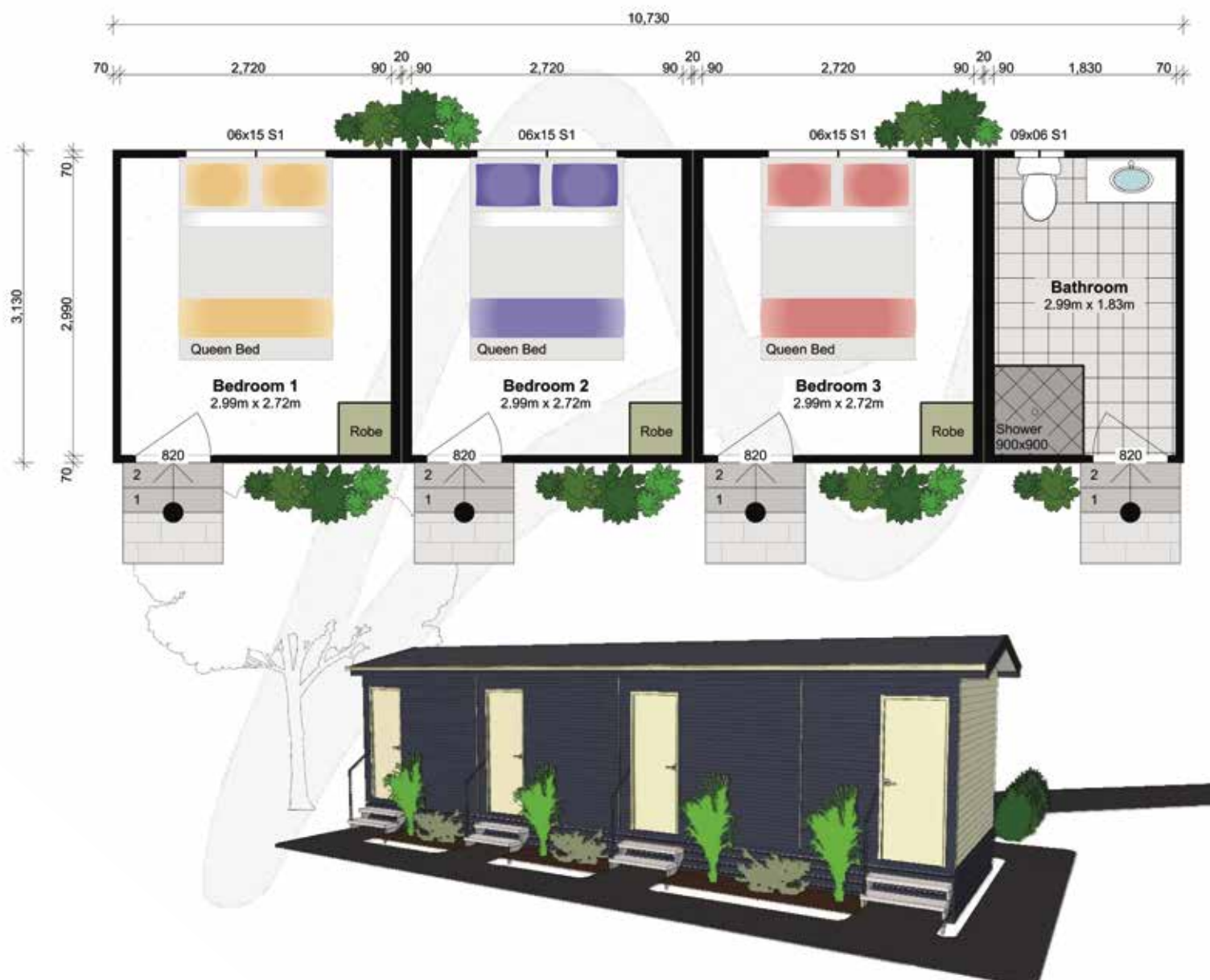
# Fox Glove 1

 3  1

Area (m<sup>2</sup>): 33.59  
Size (m): 10.73 x 3.13

## VERSION NOTES

- Shown with Colorbond Cladding Feature to Front Wall



Premium Mining Accommodation

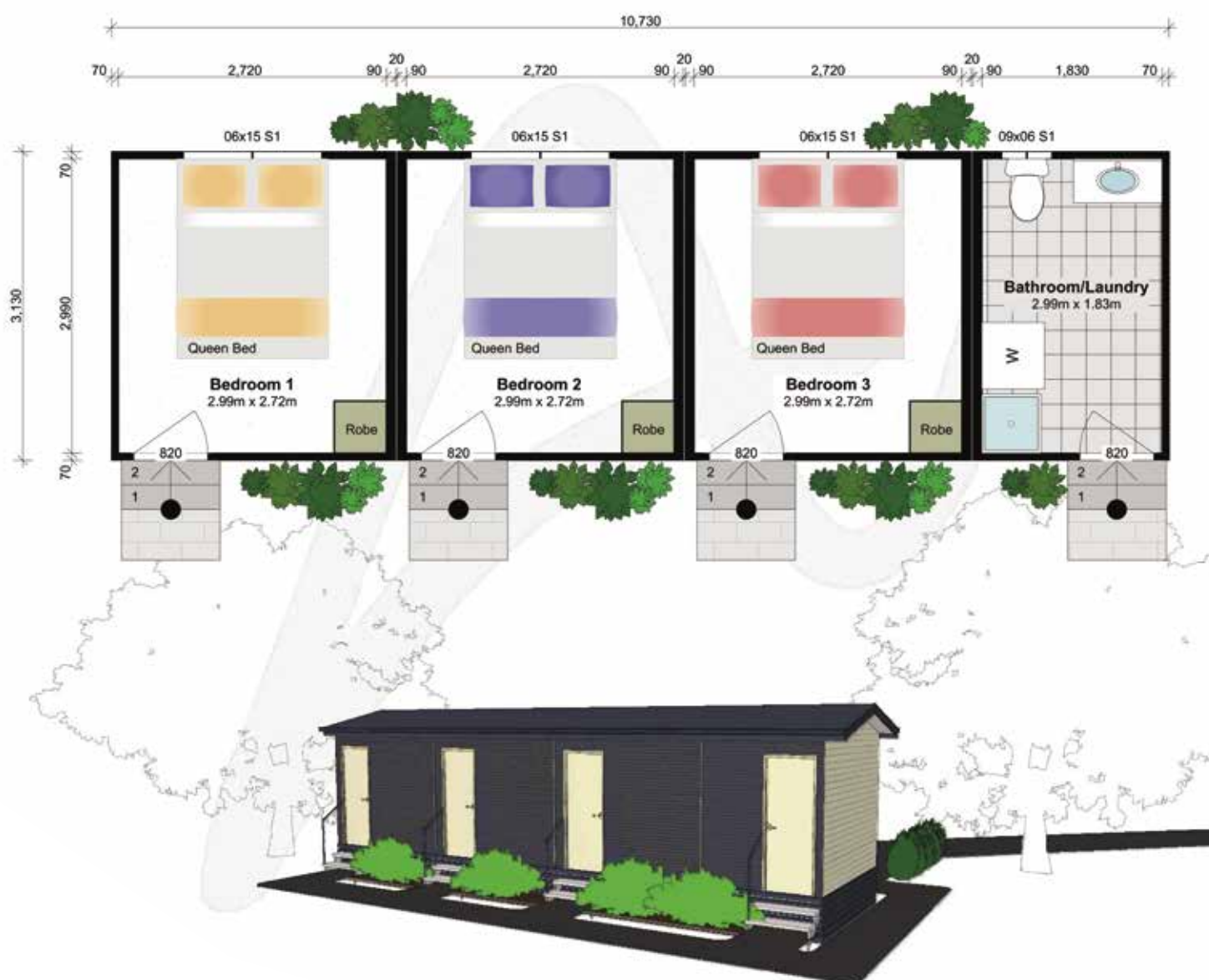
# Fox Glove 2



Area (m<sup>2</sup>): 33.59  
Size (m): 10.73 x 3.13

## VERSION NOTES

- Shown with Colorbond Cladding Feature to Front Wall





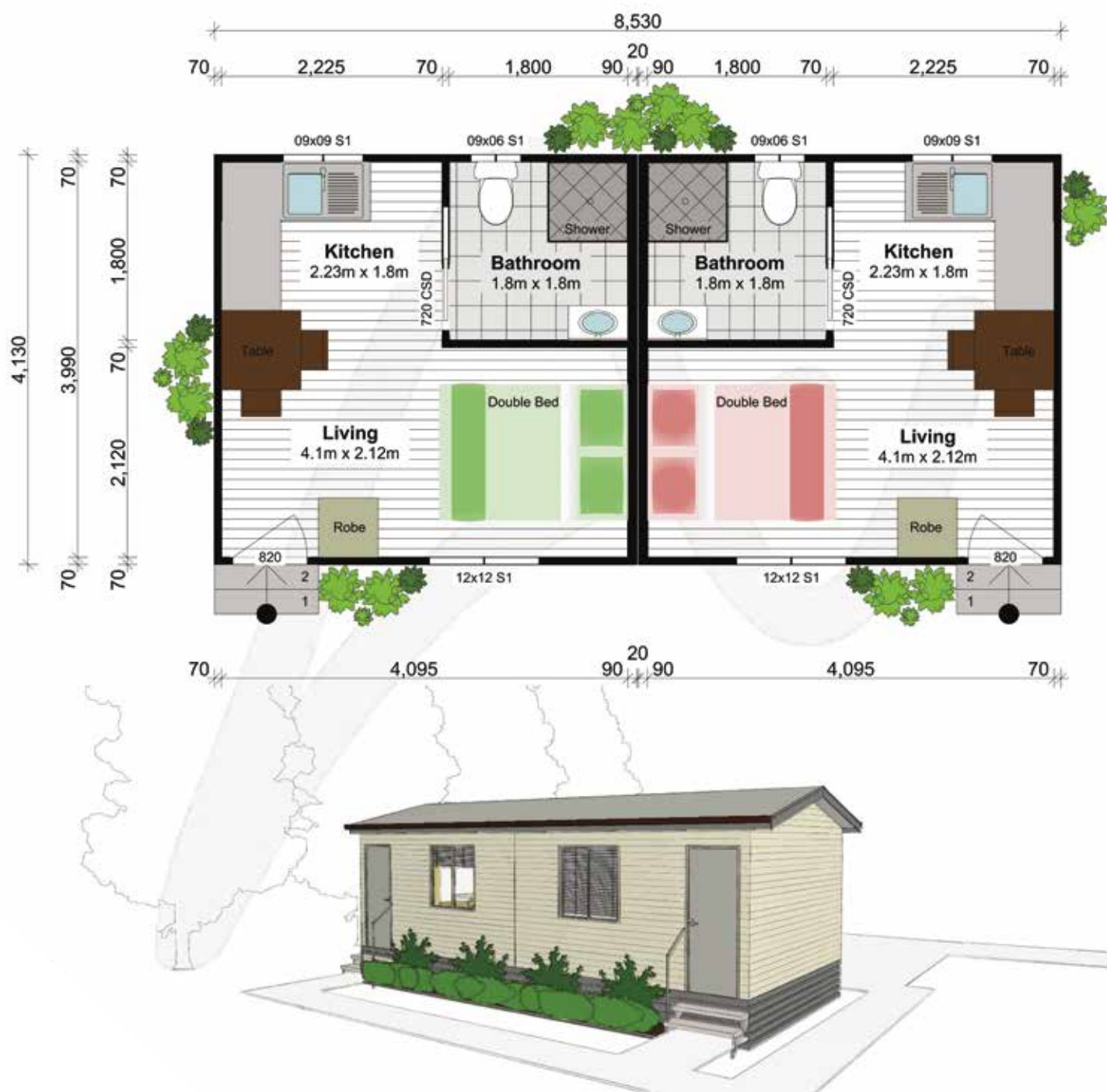
# Acacia 1

Area (m<sup>2</sup>): **35.23**  
Size (m): **8.53 x 4.13**



## VERSION NOTES

- Shown with standard 14° gable roof



# Acacia 2

Area (m<sup>2</sup>): **76.41**  
Size (m): **18.5 x 4.13**



## VERSION NOTES

- Shown with standard 14° gable roof



# Correa 4Rm 1



Area (m²): **47.85** Size (m): **11.18 x 4.28** (incl. verandah)

## VERSION NOTES

- Shown with PSC 4 Front Door



Premium Mining Accommodation



# Correa 4Rm 2



Area (m<sup>2</sup>): Size (m):  
**60.86 14.22 x 4.28** (incl. verandah)

## VERSION NOTES

- Shown with PSC 4 Front Door



## Premium Mining Accommodation

# Correa 5Rm



Area (m<sup>2</sup>): **59.88** Size (m): **13.99 x 4.28** (incl. verandah)

## VERSION NOTES

- Shown with PMAD 101 Front Door



# Lilly Pilly

 6  2

Area (m<sup>2</sup>): Size (m):  
**197.76 15.39 x 12.85** (incl. verandah)

## VERSION NOTES

- Shown with Colorbond Feature to Centre Section of Front Wall



## Premium Mining Accommodation



# Double Amenities 1

Area (m<sup>2</sup>): Size (m):  
**10.0 5.0 x 2.0**

## VERSION NOTES

- Shown with 7° Skillion Roofline

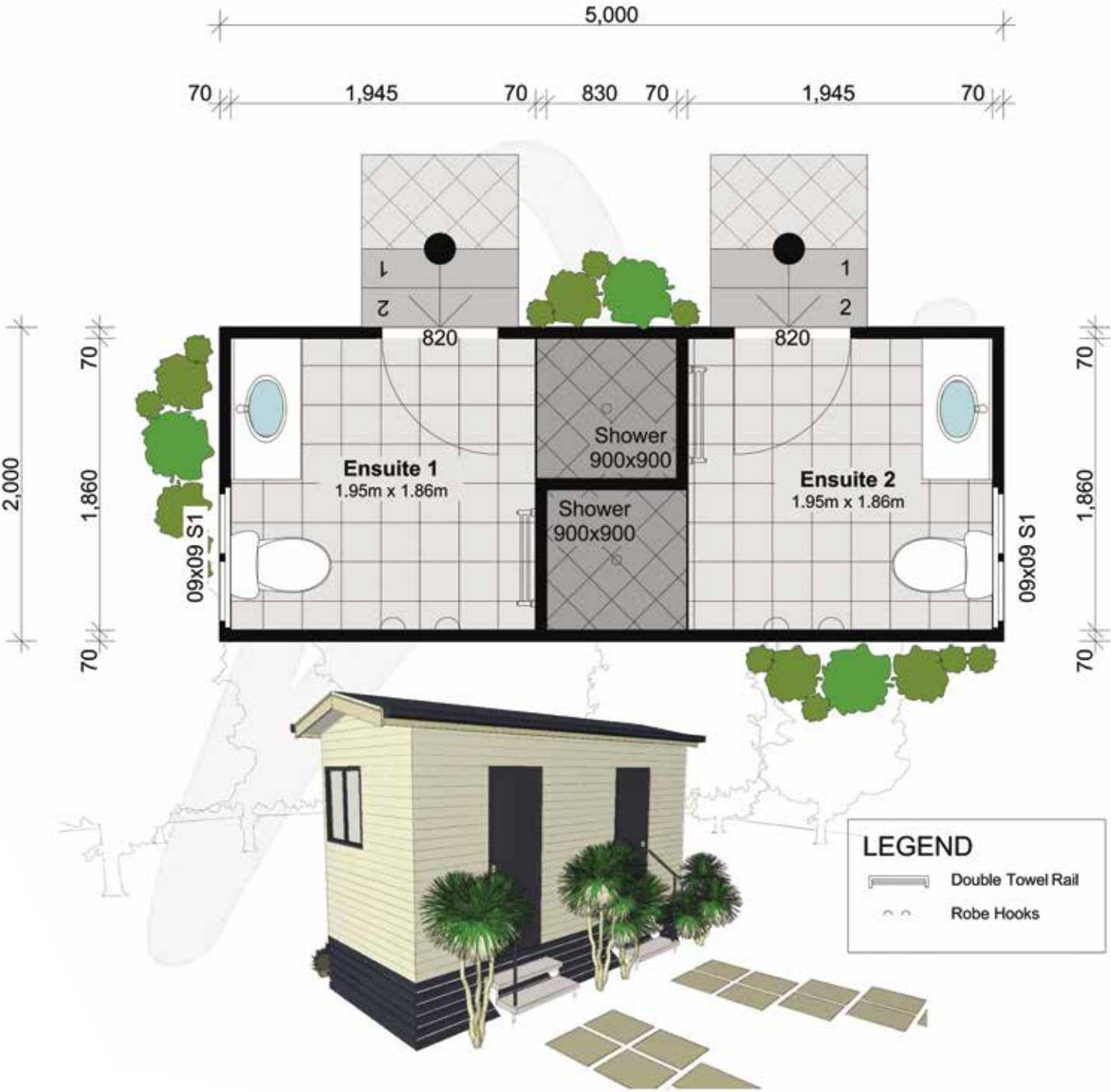


# Double Amenities 2

Area (m²): Size (m):  
10.0 5.0 x 2.0

VERSION NOTES

- Shown with standard 14° gable roof



# Quad Amenities 1

Area (m<sup>2</sup>): Size (m):  
**18.0 6.0 x 3.0**

## VERSION NOTES

- Shown with Colorbond Feature to End Walls



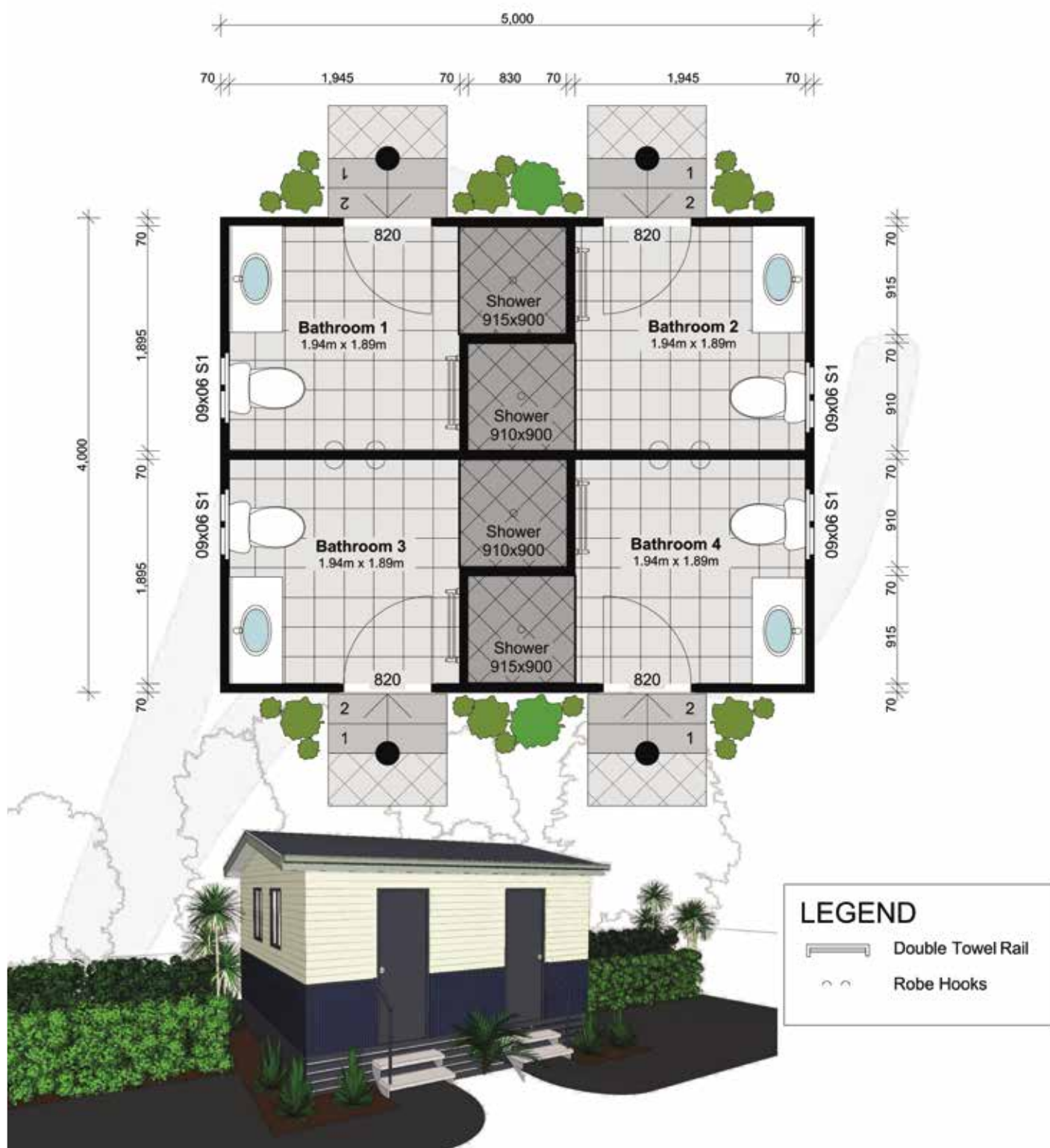


# Quad Amenities 2

Area (m<sup>2</sup>): 20  
Size (m): 5.0 x 4.0

## VERSION NOTES

- Shown with 'Denver' Feature Cladding

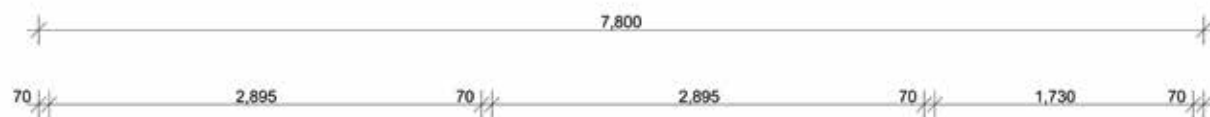


# Quad Amenities with Laundry

Area (m<sup>2</sup>): 23.4  
Size (m): 7.8 x 3.0

## VERSION NOTES

- Shown with standard 14° gable roof



## LEGEND

- Double Towel Rail
- Robe Hooks

# Quad Amenities with Disabled Access Bathroom

Area (m<sup>2</sup>): Size (m):  
25.5 8.5 x 3.0

## VERSION NOTES

- Shown with Colorbond Feature to External Wall





# Quad Amenities with Side Verandah

Area (m<sup>2</sup>): **32.62** Size (m): **9.93 x 3.285** (incl. verandah)

## VERSION NOTES

- Shown with standard 14° gable roof



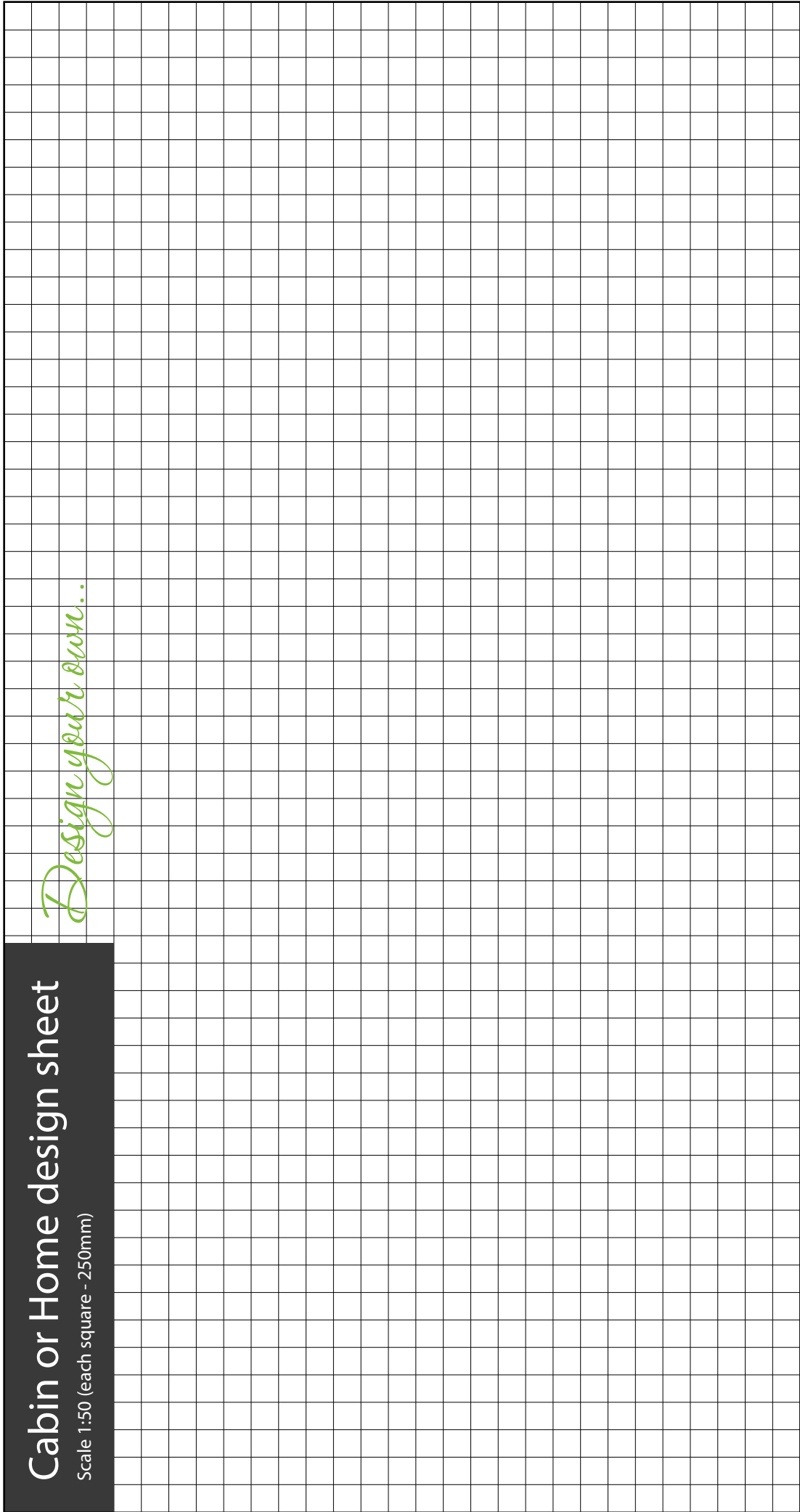
[illegible]



# Cabin or Home design sheet

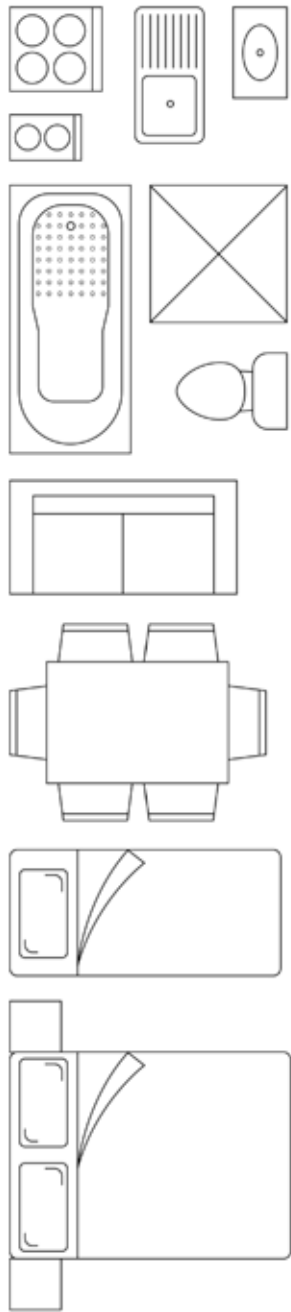
Scale 1:50 (each square - 250mm)

*Design your own...*



**FREECALL 1800 225 224**  
sales@assetcabins.com.au  
**www.assetcabins.com.au**

Client name: .....  
Date: .....

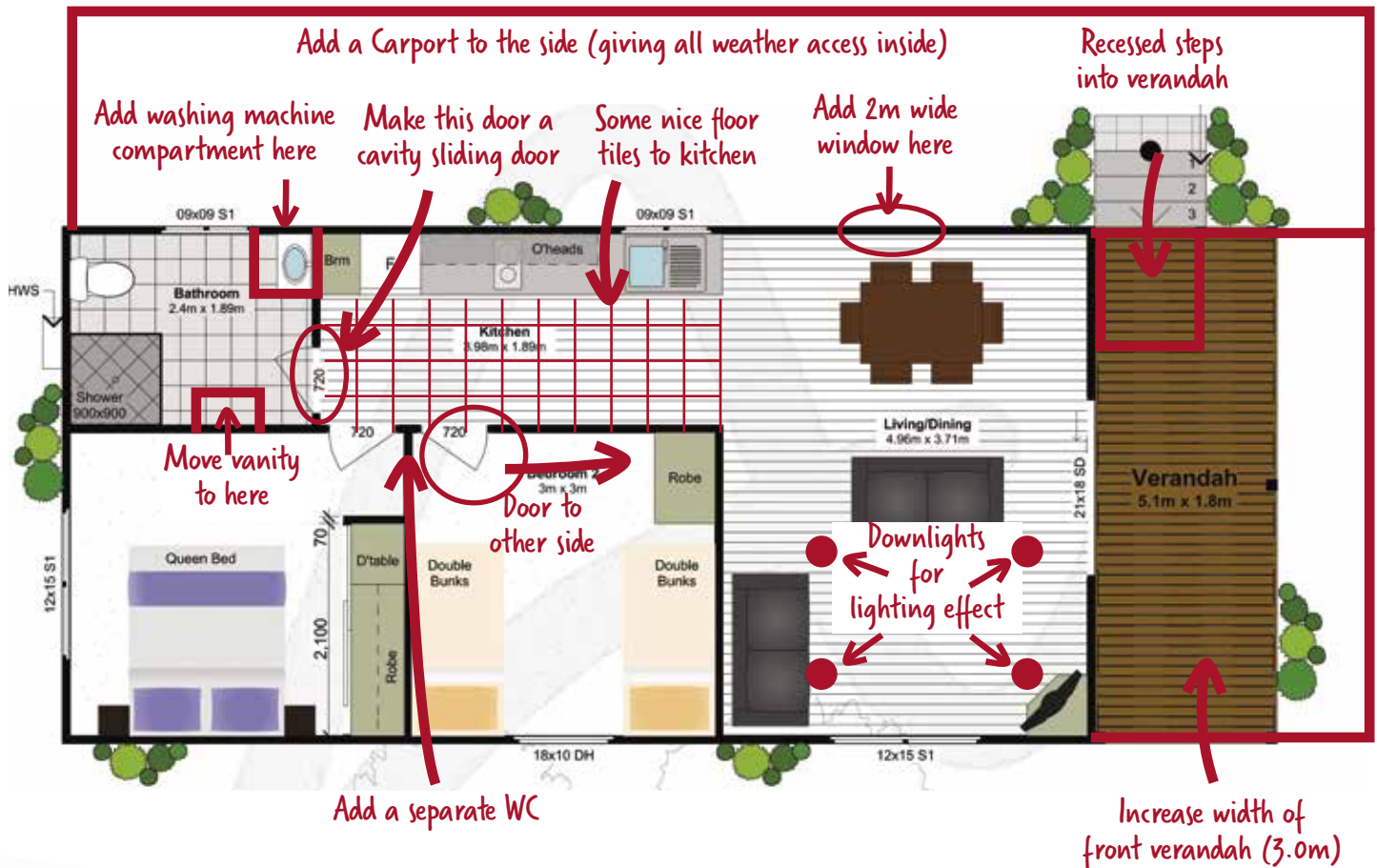




# Why not customise your plan like this example?

(Remember, with Asset Cabins and Homes you're not charged for changes unless materials/labour costs increase.)

## Angophora (Amended)

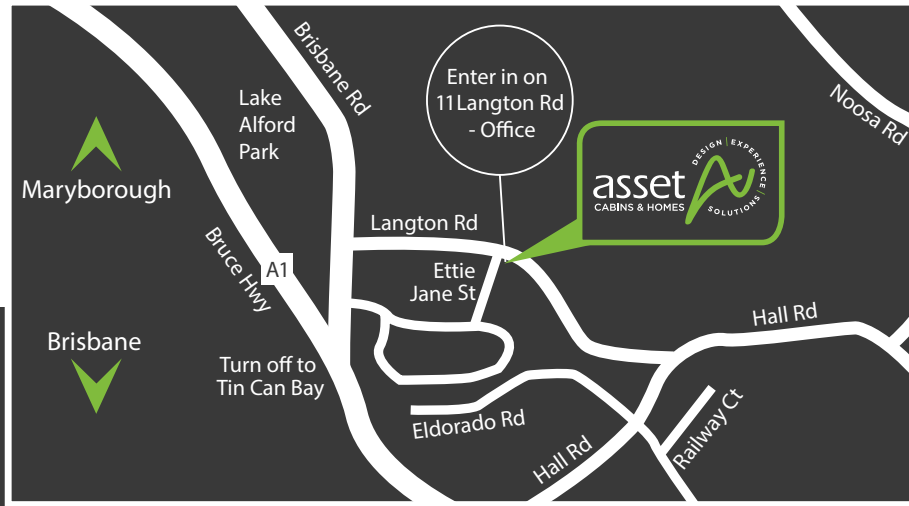


### Questions to ask!

Add a bay window?  
Move a window to capture the breeze?  
Built in cupboard in living room?  
Sliding door to bathroom/laundry?

### Some more great ideas to consider

- ✓ Mirror reverse the plan to suit the site
- ✓ Change the queen bed to a split pair of 'Zip Combos' (two long singles)
- ✓ Alter a plan to be wider or longer
- ✓ Add a separate WC



## Talk to Asset Cabins and Homes about:

- ✓ *The support of a Company that is more than just a manufacturer, and the confidence that your project is helped from approvals through to project completion with a qualified builder.*
- ✓ *The difference that over 27 years of experience and manufacturing truly makes to the quality of the products you buy.*
- ✓ *The flexibility of design that is so simply achieved.*
- ✓ *You'll discover the difference that professional solutions make to your building project.*



Freecall 1800 225 224

[www.assetcabins.com.au](http://www.assetcabins.com.au)

T: 07 5483 7144 | E: [sales@assetcabins.com.au](mailto:sales@assetcabins.com.au)

11 Langton Road Gympie Qld 4570

QBCC License No. 1199395



#### Disclaimer

Due to our policy of continual product development, Asset Cabins and Homes reserves the right to alter specifications without notice and without incurring any obligation.