

HIGH VOLUME DRY SHIPPER: ADD MORE LN2 WITHOUT SAMPLES INSIDE

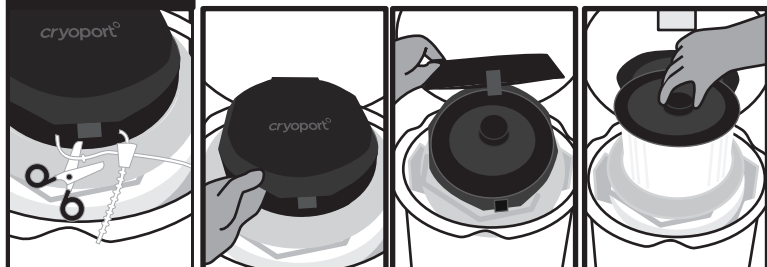
PERSONAL PROTECTIVE EQUIPMENT: CRYOGENIC GLOVES, SAFETY GOGGLES

STEP 1

UNLATCHING INSTRUCTIONS

**UNLATCH THE ENCLOSURE PER INSTRUCTION 9356,
HOW TO UNLATCH & LATCH HIGH VOLUME ENCLOSURES**

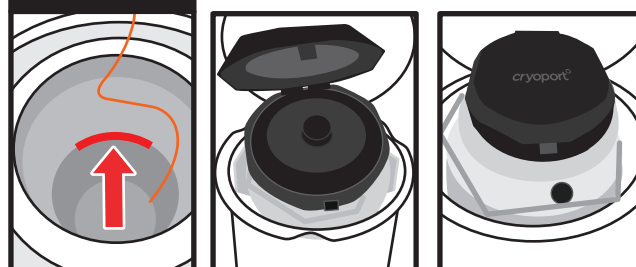
STEP 2



Cut off the zip tie on the hinged cap with scissors.

Open the hinged cap by pulling up on one of the two lift handles on the lid. With gloved hands, pull up on the circular handle in the center of the vapor plug to remove the vapor plug. Set the vapor plug aside.

STEP 3

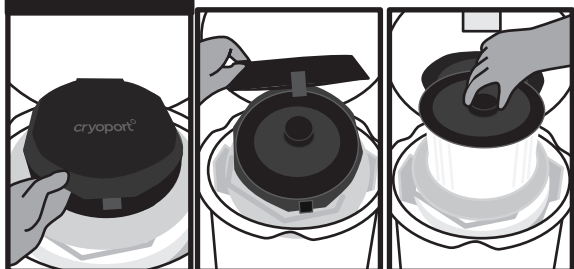


Slowly pour Liquid Nitrogen into opening. Fill the dewar up to the bottom of the neck tube.

Replace the vapor plug.

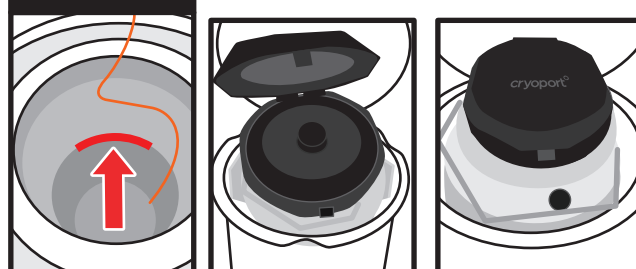
Close the hinged cap by pulling down on the lid. Let the shipper stabilize, undisturbed, for at least 30 minutes.

STEP 4



Open the hinged cap by pulling up on one of the two lift handles on the lid. With gloved hands, pull up on the circular handle in the center of the vapor plug to remove the vapor plug. Set the vapor plug aside.

STEP 5



Slowly pour Liquid Nitrogen into opening. Fill the dewar up to the bottom of the neck tube.

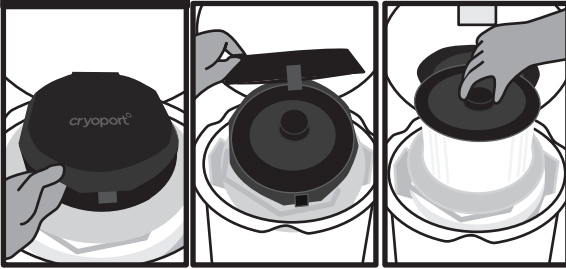
Replace the vapor plug.

Close the hinged cap by pulling down on the lid. Let the shipper stabilize, undisturbed, overnight.

**IF THE DRY SHIPPER DOES NOT EMIT VAPOR WHEN PLUG IS REMOVED
PLEASE CONTACT CUSTOMER SERVICE IMMEDIATELY, BY CALLING (949) 470-2305 OR EMAIL CS@CRYOPORT.COM**

HIGH VOLUME DRY SHIPPER: ADD MORE LN2 WITHOUT SAMPLES INSIDE

STEP 6



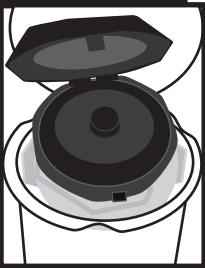
Open the hinged cap by pulling up on one of the two lift handles on the lid. With gloved hands, pull up on the circular handle in the center of the vapor plug to remove the vapor plug. Set the vapor plug aside.

STEP 7



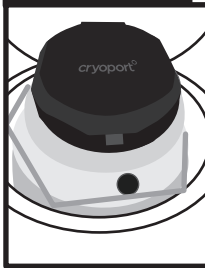
Pour off any excess liquid nitrogen by removing the lid and tipping the open end of the dry shipper toward the ground for two seconds.

STEP 8



Replace the vapor plug.

STEP 9



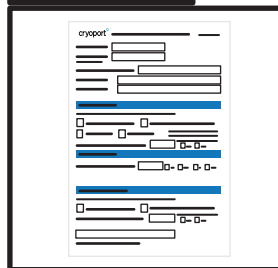
Close the hinged cap by pulling down on the lid.

STEP 10



Secure the hinged cap with a zip tie.

STEP 11



Complete the In Field Recharging form and send it to cs@cryoport.com

STEP 12

LATCHING INSTRUCTIONS

**LATCH THE ENCLOSURE PER INSTRUCTION 9356,
HOW TO UNLATCH & LATCH HIGH VOLUME ENCLOSURES**