

HIGH VOLUME SHIPMENT: LOADING NON-INFECTIOUS SAMPLES

SECTION A RECEIVING SHIPPER

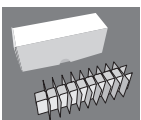
STEP 1 UNLATCHING INSTRUCTIONS

UNLATCH THE ENCLOSURE PER INSTRUCTION 9356,
HOW TO UNLATCH & LATCH HIGH VOLUME ENCLOSURES

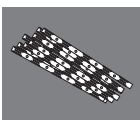
IMPORTANT NOTE: Commodity and accessories must be pre-conditioned prior to loading into the sample chamber. A **20% reduction of holding time** can occur if the materials are not preconditioned prior to loading into the shipper.

SECTION B PACKING THE SPECIMEN

STEP 1 LOADING SAMPLES TO BE SHIPPED INTO EITHER:



ACC-9043

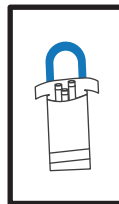


ACC-9033

Cryovial Box
Holds 30 (2ml) vials.

Canes
Holds 5 (2ml) vials.

ACC-9139



ACC-9140

Safepak® Holds 15 canes or 2 (5 1/2" x 2" x 2") boxes. 7 bags can be loaded into the dewar.

Safepak®XL
Holds multiple payloads.

Cryostrap®
Use alone or with the Safepak®XL to secure blood cassettes and cryovial boxes.

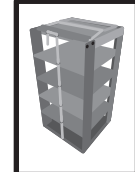


ACC-9141

ACC-9122



Cassette Rack
Holds 9 (9.5" x 6" x 0.5") cassettes.

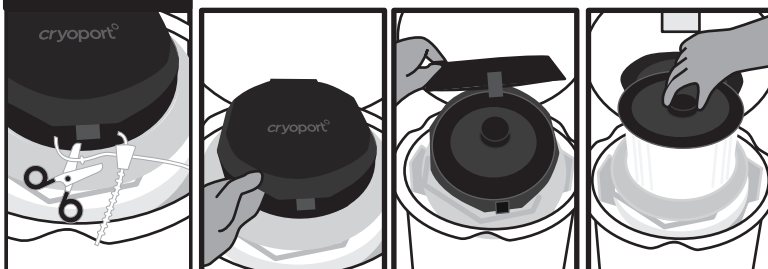


ACC-8905

Box Rack
Holds 5 (5 3/8" x 5 3/8" x 2 1/4") or 10 (5 1/2" x 2" x 2") boxes.

SECTION C LOADING SAMPLES FOR SHIPMENT

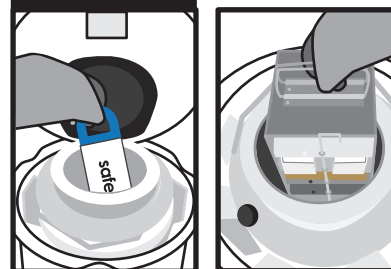
STEP 1



Cut off the zip tie on the hinged cap with scissors.

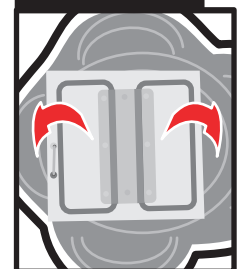
Open the hinged cap by pulling up on one of the two lift handles on the lid. With gloved hands, pull up on the circular handle in the center of the vapor plug to remove the vapor plug. Set the vapor plug aside.

STEP 2



Lower the packaged commodity into the dewar with gloved hands.

STEP 3



If your commodity is loaded in a rack, ensure the handles are laying flat against the top.

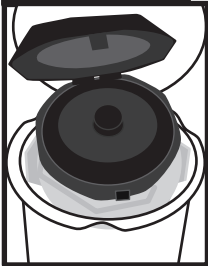
IF THE DRY SHIPPER DOES NOT EMIT VAPOR WHEN PLUG IS REMOVED
PLEASE CONTACT CUSTOMER SERVICE IMMEDIATELY, BY CALLING (949) 470-2305 OR EMAIL CS@CRYOPORT.COM

HIGH VOLUME SHIPMENT: LOADING NON-INFECTIOUS SAMPLES

SECTION D

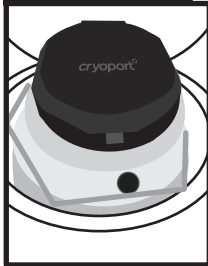
PACKAGING THE SHIPMENT

STEP 1



Replace the vapor plug.

STEP 2



Close the hinged cap by pulling down on the lid.

STEP 3



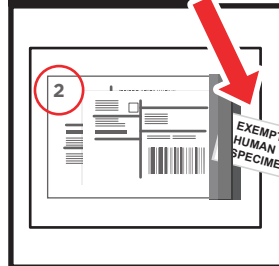
Secure the hinged cap with a zip tie.

STEP 4

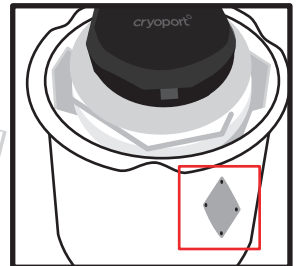


Remove the Leg 2 shipping pouch from the document protector attached to the dewar handle inside of the container.

STEP 5



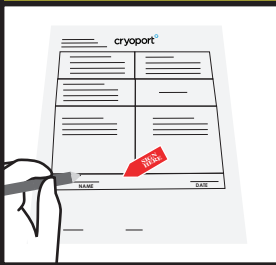
Remove any classification labels from the shipping pouch and place on the metal diamond.



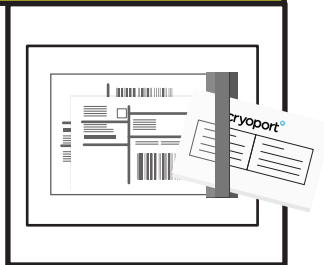
STEP 6

Remove the commercial Invoices located in the shipping pouch.

International Shipments ONLY



Sign and date.



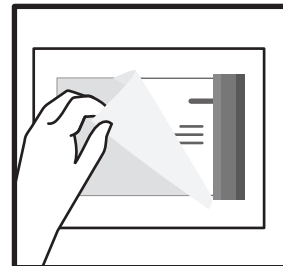
Return all documents being shipped behind the Air Waybill Including any: Permits, Forms, Licenses, etc.

STEP 7

Once all documents are loaded:



Close the shipping pouch and remove sticker backing.



Place shipping pouch on the enclosure's metal plate.



Close the enclosure lid.

STEP 8

**LATCH THE ENCLOSURE PER INSTRUCTION 9356,
HOW TO UNLATCH & LATCH HIGH VOLUME ENCLOSURES**

For those shipments containing regulated dangerous goods/hazardous materials, the shipper is responsible for correctly preparing the shipment according to the current International Air Transport Association (IATA) and International Civil Aviation Organization (ICAO) dangerous goods regulations.

This includes correct identification, classification, packaging, dangerous goods markings and labeling as well as completion of all pertinent and required documentation. The shipper is the customer who is preparing the shipment at each leg in the transportation of the dry dewar packaging.