



## OPTIONAL LATCHES ON HIGH VOLUME SHIPMENTS

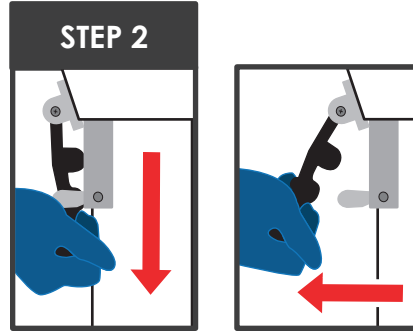
### OPTION 2

### BLACK RUBBER LATCH INSTRUCTIONS

#### UNLATCHING INSTRUCTIONS

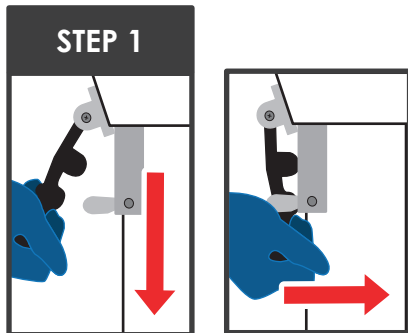


Remove zip-ties with scissors.

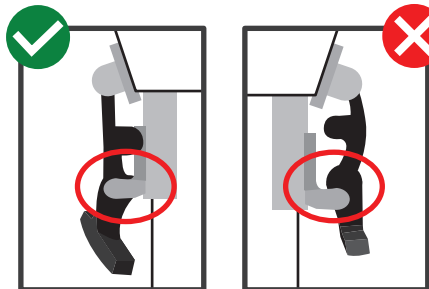


Unlatch both sides by pulling black handle down & away from the shipper.

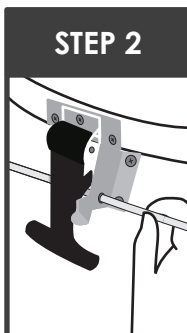
#### LATCHING & ZIP TIE INSTRUCTIONS



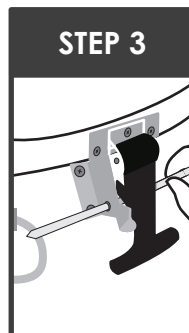
Latch handle on both sides by pulling the black handle down & then towards the shipper.



Ensure the ball knob is securely latched in the metal hardware's socket.



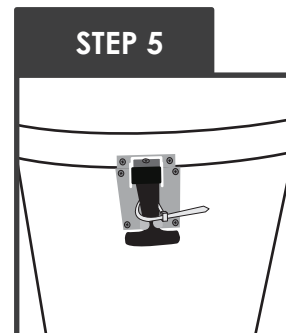
Insert zip-tie through one of the holes on the metal latch hardware.



Thread end of zip-tie through the hole on the other side of the metal hardware.



Insert zip-tie through the lid buckle and tighten.



Zip-tie is now securely around the black handle.