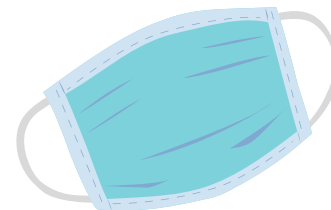


STAFF WEARING MASKS

There is new evidence that healthcare workers with no symptoms of COVID-19, who are in the incubation period, could unintentionally infect residents and other staff with the virus. The Public Health Agency of Canada (PHAC) has issued updated recommendations that healthcare workers should wear a surgical or procedure mask when providing direct care to prevent transmission to residents and their co-workers.



Because of these recommendations and those of other jurisdictions, Dr. Deena Hinshaw, Alberta's Chief Medical Officer of Health has issued a directive that all health care workers providing direct resident care or working in resident care areas must wear a surgical or procedure mask continuously at all times and in all areas of the workplace if they are either involved in direct resident contact or cannot maintain adequate physical distance (2 meters) from resident and co-workers. This strategy is in addition to the use of personal protective equipment (PPE) as part of droplet and contact

WHEN WEARING MASK, DO:

- ✓ Wear a mask at all times and in all areas of the workplace if:
 - involved in direct resident contact, or
 - cannot maintain physical distance (2 meters) from residents and co-workers.
- ✓ Conduct a Point of Care Risk Assessment (PCRA) before every resident interaction.
- ✓ Remove and dispose of mask when exiting an isolated resident's room and put on a new mask.
- ✓ Perform hand hygiene after taking off mask and before putting a new one on.
- ✓ Remove mask before eating/drinking.
- ✓ Wear mask over mouth and nose.
- ✓ Change mask when wet.
- ✓ Wash hands after any contact with mask.

WHEN WEARING MASK, DON'T:

- ✗ Wear mask around neck between use.
- ✗ Keep adjusting mask when on your face.
- ✗ Leave used masked at nursing station or on the desk.
- ✗ Wear a procedure mask for aerosol-generating medical procedures (AGMP).
- ✗ Touch your face without washing your hands.

When wearing a mask, you must be **extremely diligent** in following all other PPE precautions and performing hand hygiene.

Even though health care workers are to wear a surgical or procedure mask continuously during their shift, it is still critical to do our best to conserve our personal protective equipment (PPE).

Wear it the right way, at the right time, and change it when you need to.