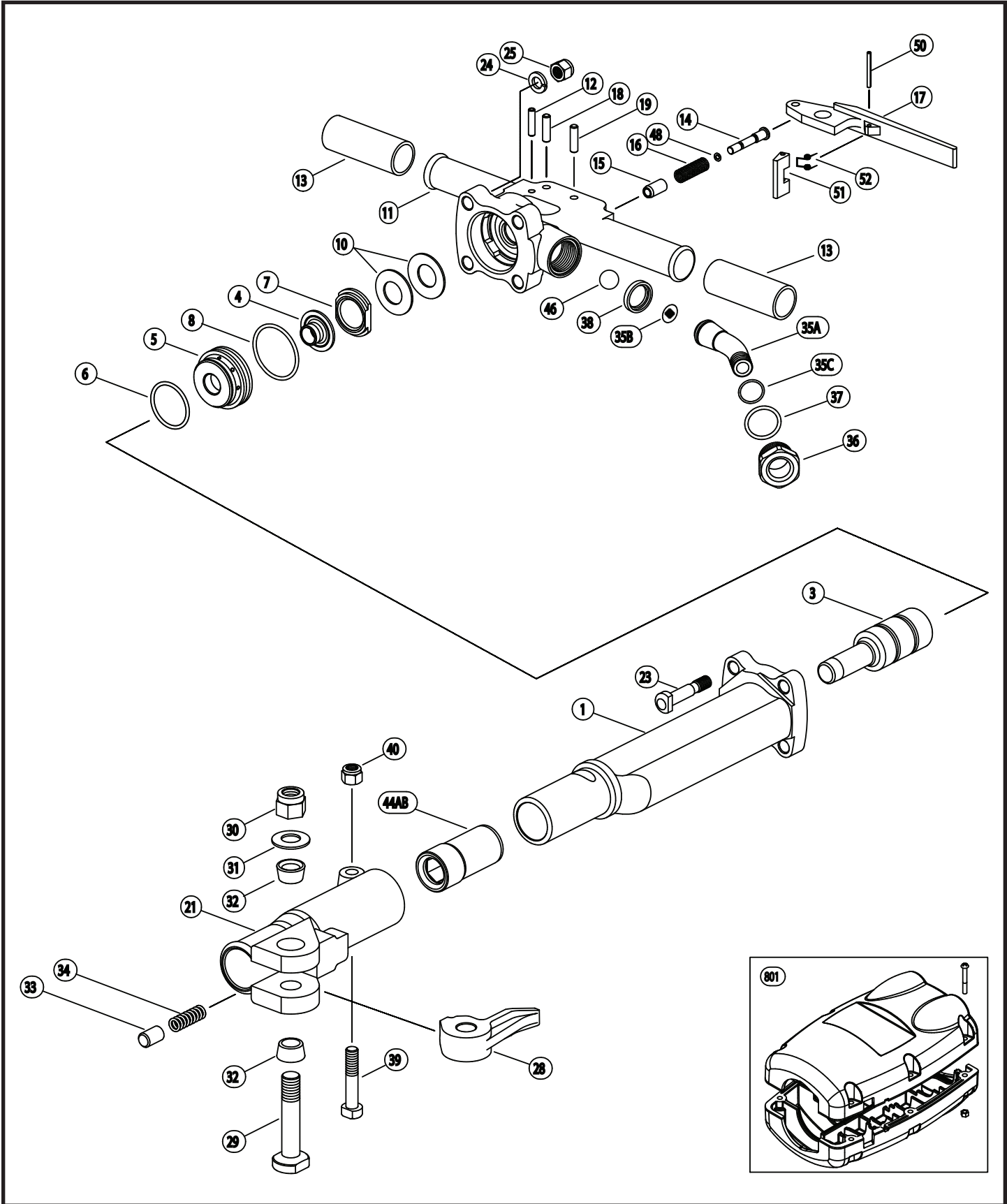




# Toku TPB-40 Paving Breaker





# Toku TPB-40 Paving Breaker

Index	Tamco	Harper	Thor	Jet	Kent	Description	List Price
1	410231010	66401		PB40-01	K04075	Cylinder	599.00
3	410231040	66403		PB40-03	K04076	Piston	115.35
4	410231150	66405		PB40-04	K04077	Valve	75.15
5	410231190	66404		PB40-05	K04078	Valve Chest	56.35
6	131101045	66406		PB40-06	K04079	Valve Chest O-Ring P-46	2.45
7	410231180	66407		PB40-07	K04080	Valve Cover	61.60
8	131111356	66408		PB40-08	K04081	Valve Chest O-Ring JASO-3056	9.45
10	131313050	66410		PB40-10	K04082	Cone Disc Spring H-25	9.45
11	410231490	66411		PB40-11		Back Head - Bare	361.90
12	130606030					Spring Pin 6 x 30	3.25
13	136601011***	66913	43476	PB40-13	K03019	Rubber Grip	6.85
14	410231321	66414		PB40-14	KBM04085	Throttle Push Rod	25.20
15	410231281	66415		PB40-15	K04086	Throttle Valve Bushing	27.70
16	130801036^	66313		PB40-16	K04087	Throttle Valve Spring	4.80
17	410241311***	66917	43428	PB40-17	K01296	Throttle Lever	43.15
18	410201330***	66918	43393	PB40-18	K01292	Throttle Lever Pin 8 x 30	3.40
19	130655030					Spring Roll Pin 8 x 30 (Spiral)	7.55
21	410231530	66421		PB40-19	K04090	Front Head	409.40
23	410201500^	66323	43040	PB40-23	KBM06129	Back Head Bolt	15.80
24	131303032^	66324	50734	PB40-24	K01146	Back Head Bolt Lock Washer 1/2	0.85
25	134201012^	66325	43014	PB40-25	K00694	Back Head Bolt Nut	2.55
28	410241610***	66928	43527	PB40-28	K01137	Steel Retainer	60.30
29	410231620***	66929	43524	PB40-29	K01132	Steel Retainer Bolt	27.05
30	134601019***	66930	43525	PB40-30	K00954	Hex Nylon Nut (Steel Rtr. Bolt Nut)	3.15
31	131313041***			PB40-31		Coned Disc Spring H-20	2.85
32	136301009	66932	45605	PB40-32	K05719	Steel Retainer Bolt Bushing	12.00
33	410241650***	66933	43522	PB40-33	K01287	Steel Retainer Plunger	4.55
34	130801042***	66934	43521	PB40-34	K01288	Steel Retainer Spring	4.00
35A	410231370	66635		PB40-35	K05802	Air Inlet Swivel	63.20
35B	136801001	66622^		PB40-35B	K01551	Air Inlet Screen	4.10
35C	131103019	66438		PB40-38	K02846	Air Inlet Swivel O-Ring S-24	2.05
36	410231390	66436		PB40-36	K05800	Air Inlet Swivel Nut	51.80
37	131101033	66637^		PB40-37	K01932	Air Inlet Swivel Nut O-Ring P-32	4.40
38	410231410	66454			K04088	Air Inlet Swivel Spacer	15.35
39	410201540	66339^	98424	PB40-39	KBM06131	Front Head Bolt	15.80
40	134201012	66340^	43759	PB40-40	K00694	Front Head Bolt Nut	2.55
44B	410235570	66444		PB40-44	K04091	Front Head Bushing 1"	103.70
46	130505048	66449		SB-3/4	K04092	Throttle Valve Ball 3/4"	6.65
48	131101003	66448		PB40-48	K04093	Throttle Push Rod O-Ring P-5	3.05
50	130604040***			PB90-50		Spring Pin	2.10
51	410241761***			PB90-51		Stop Lever	9.85
52	130801046***			PB90-52		Stop Lever Spring	2.65
35CP	41023148A	66465		PB40-11CP		Back Head (Incl.#11,13,14,15,16,17,18,35A,35B,35C,36,37,38,46,48,50,51,52,55)	614.85
801	41023187C					Muffler	205.45

\*\*\* Denotes the parts are the same as Toku TPB-60 and TPB-90

^ Denotes the parts are the same as Toku TPB-30

**\*\*ALL PRICING IS SUBJECT TO CHANGE WITHOUT NOTICE\*\***