



HOW CHANGE REQUESTS WORK IN RYZE

formedix.com

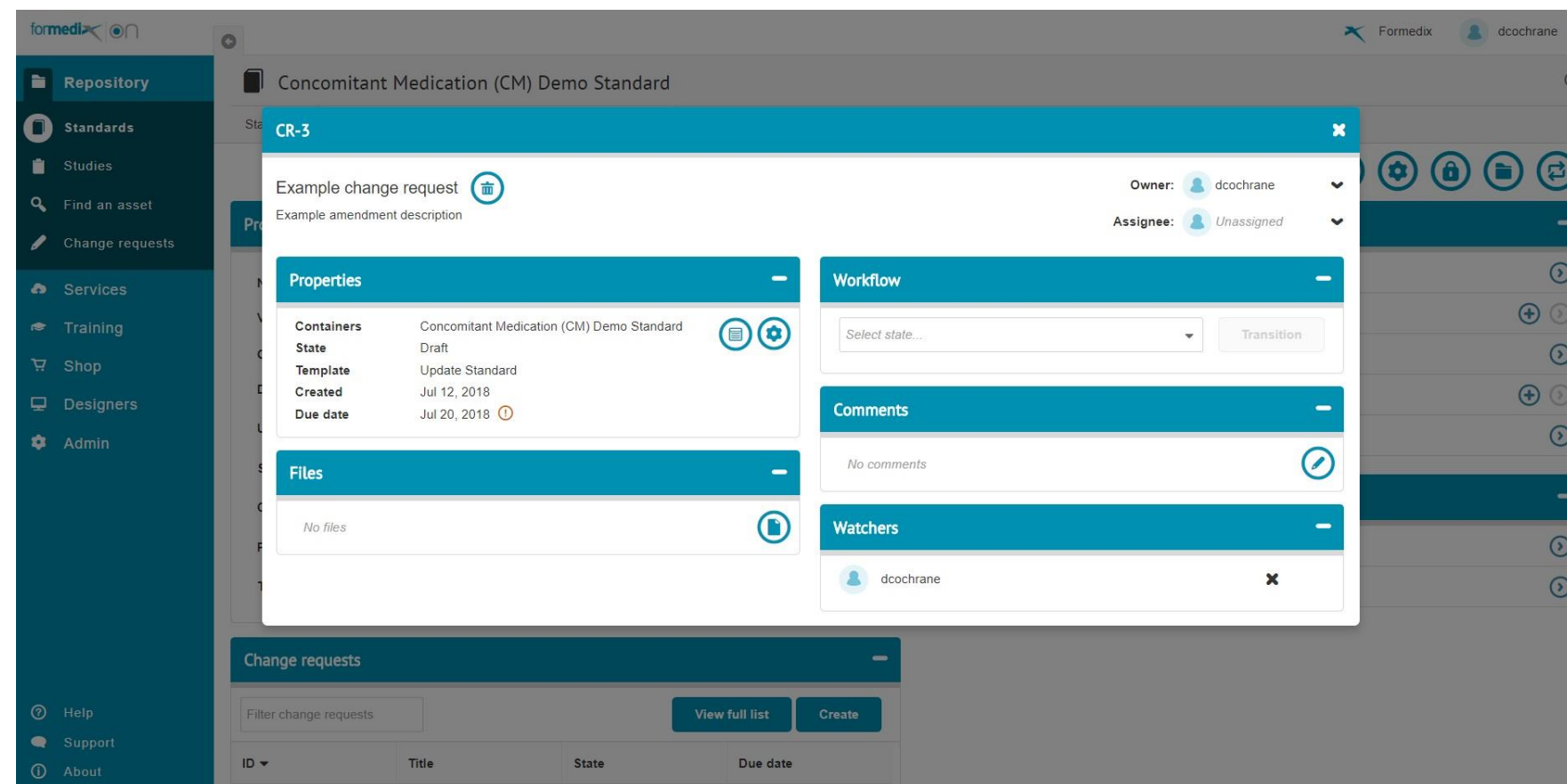
CHANGE REQUESTS... AN OVERVIEW

Change requests are used to change the state of a standard or study. This is done through a predefined workflow. You can define as many change requests as needed. Each with their own properties and lifecycle states. They can be as simple or as complex as required.

Change requests are defined by templates. Once activated in ryze, a change request template defines a specific workflow for making a change to a standard or study. The template defines the stages that the change request transitions through before completion.

GETTING STARTED IN RYZE

In ryze, change requests are generated by a filling out a simple form defined by the activated template.

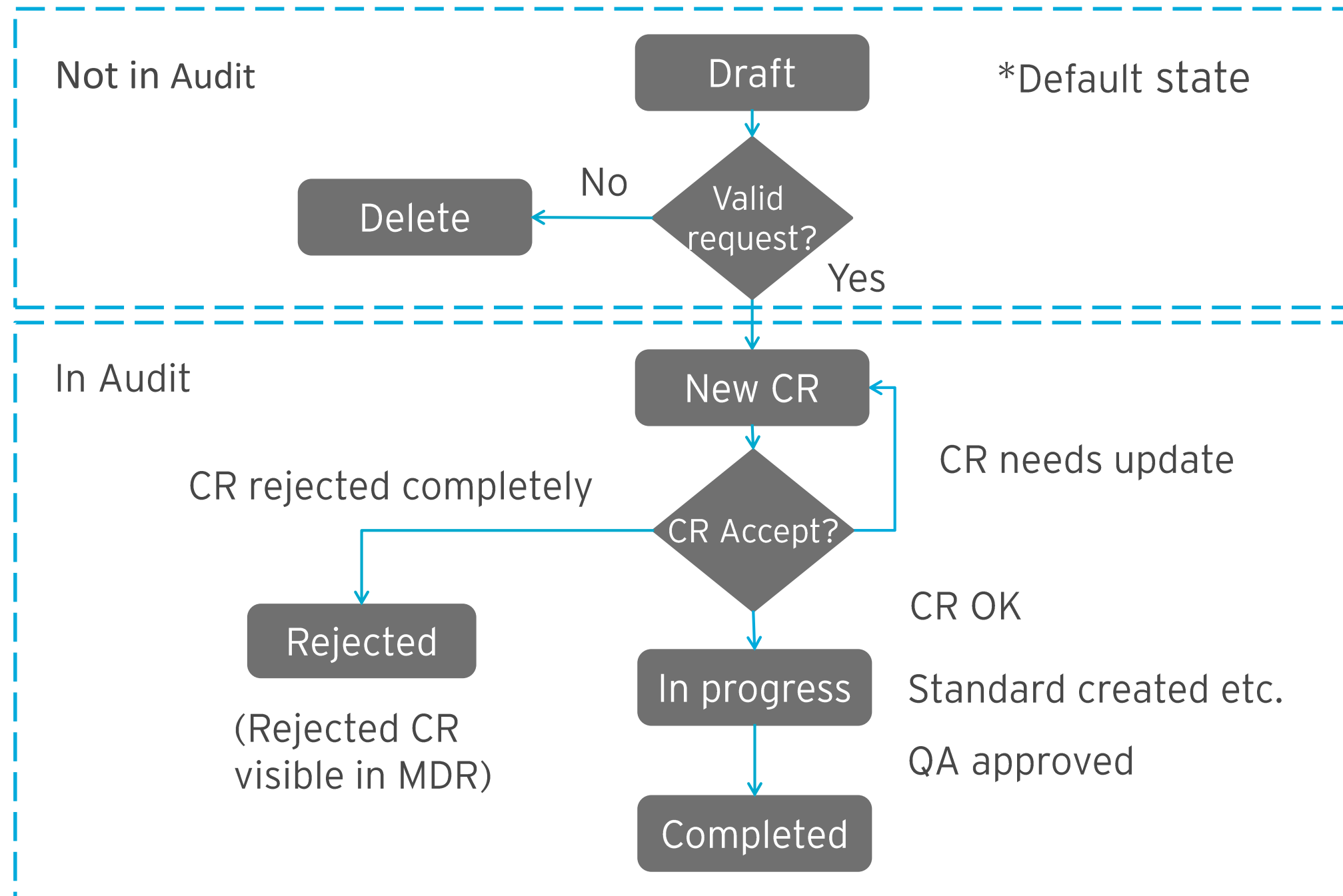


The screenshot displays the FormediX RYZE interface. A sidebar on the left contains navigation links: Repository, Standards, Studies, Find an asset, Change requests, Services, Training, Shop, Designers, and Admin. The main content area shows a 'Concomitant Medication (CM) Demo Standard' page. A modal window titled 'CR-3' is open, displaying an 'Example change request' form. The form includes a title 'Example change request', a description 'Example amendment description', and fields for 'Owner' (dcochrane) and 'Assignee' (Unassigned). Below these are four sections: 'Properties', 'Workflow', 'Comments', and 'Watchers'. The 'Properties' section lists 'Containers' (Concomitant Medication (CM) Demo Standard), 'State' (Draft), 'Template' (Update Standard), 'Created' (Jul 12, 2018), and 'Due date' (Jul 20, 2018). The 'Workflow' section has a 'Select state...' dropdown and a 'Transition' button. The 'Comments' section shows 'No comments'. The 'Watchers' section lists 'dcochrane'. At the bottom of the modal, there is a 'Change requests' section with a 'Filter change requests' input, 'View full list' and 'Create' buttons, and a table with columns 'ID', 'Title', 'State', and 'Due date'.

FEATURES

- Each change request can be attached to multiple assets for example CRFs, SDTM etc.
- A change request has an owner. This is a user who manages the change request.
- The change request is assigned to another user for action for example making a CRF update.
- Comments can be added to the request to provide feedback.
- When transitioning a stage, the request can be routed to a user group for approval.

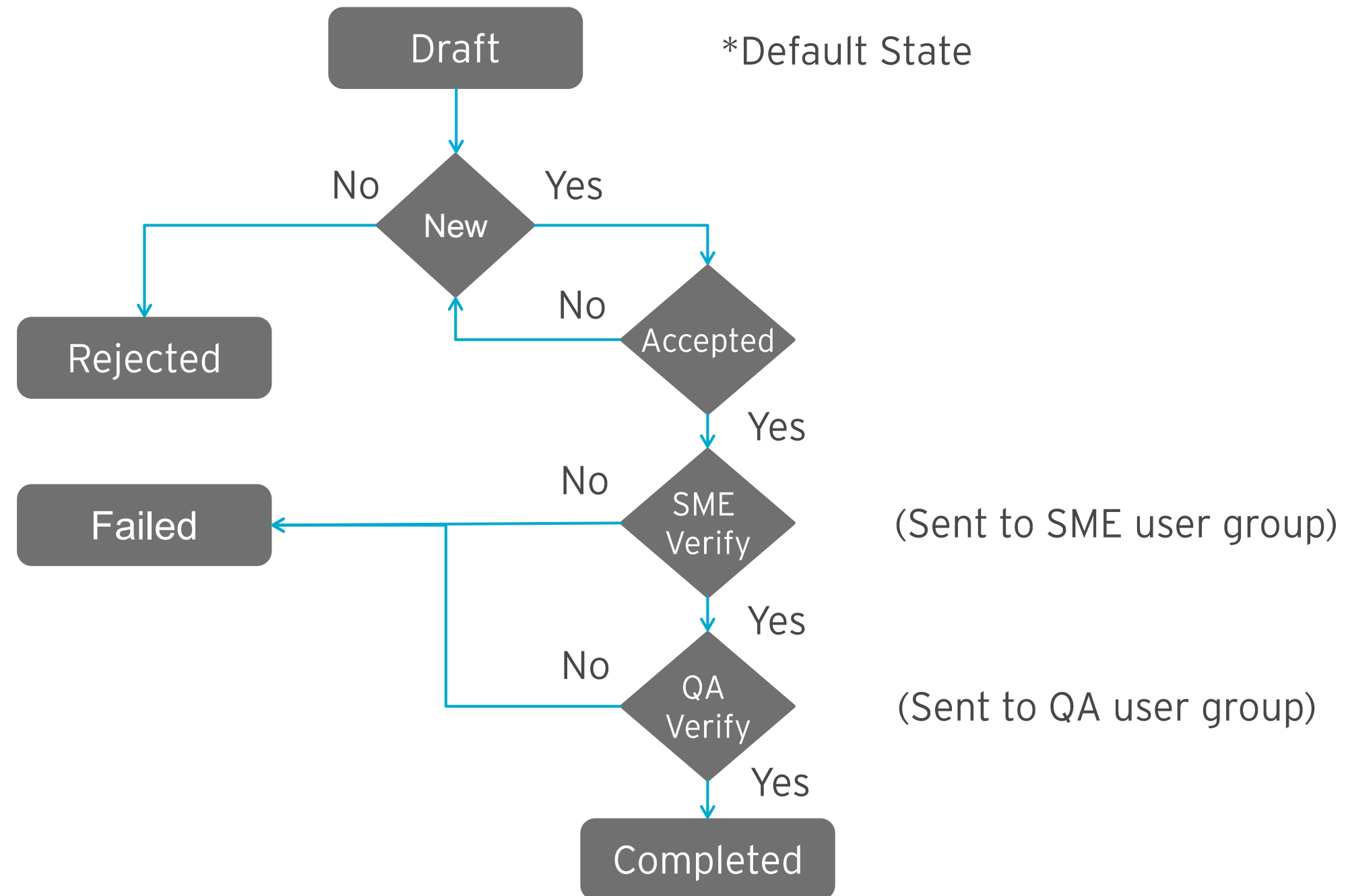
NEW STANDARD CHANGE REQUEST EXAMPLE



UPDATE STANDARD CHANGE REQUEST EXAMPLE



UPDATE STANDARD CHANGE REQUEST EXAMPLE



CUSTOMIZATION

Each change request template is fully customizable.

Administrators can customize:

- Transition stages.
- Transition paths.
- Approval groups.
- The standard or study, or both.

WANT TO KNOW MORE?

You've got nothing to lose by talking to us.

We can discuss what's going on in your company. Specific hurdles you're up against. And where you'd like to get to. We'll see if our automation platform could help.

Click to arrange a call here - <https://www.formedix.com/call-me/>

You can request a customized demo here - <https://www.formedix.com/book-a-demo/>

Or try it out for yourself with a free trial here - <https://www.formedix.com/free-trial/>