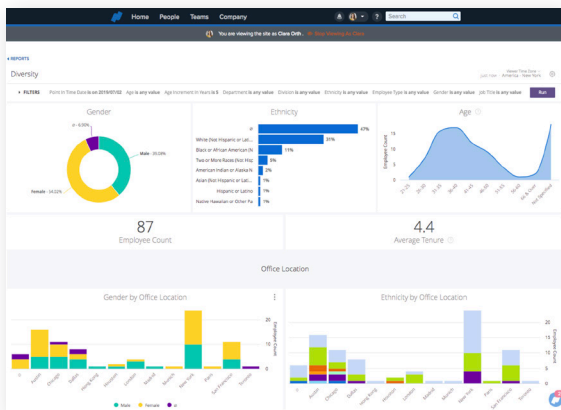
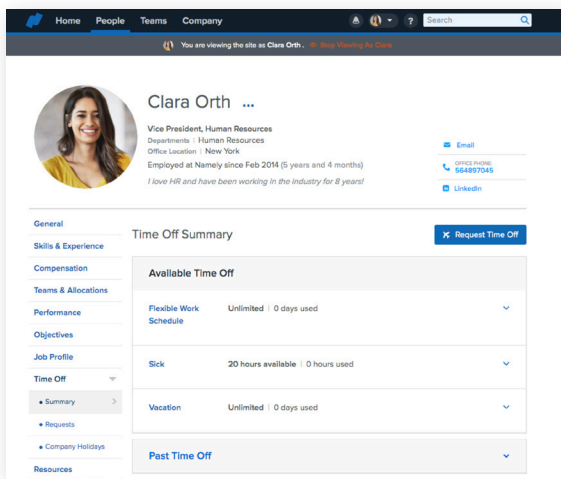


Modern HR

A simple, flexible, and modern technology for all of your core HR needs in one platform.

Namely's Modern HR offering is simple, flexible, and covers all of your core HR needs in one platform designed with end-users in mind. It handles your employee profiles, time-off tracking, reporting, and more. Keep your people engaged with a social news feed, and allow them to access the functionality on-the-go through a mobile app.



Onboarding

- Unlimited templates
- Pre-start date kick off
- Personalized company branding
- New hire data collection
- E-Verify Integration
- Document Acknowledgement
- E-signature
- Task lists
- Pre-built ATS integrations

Company

- Social news feed
- Org chart
- Employee directory
- Custom organizational units
- Custom teams
- Unlimited, role-based workflows
- Employee allocations
- Custom roles and permissions
- Unlimited document resource storage
- Mass e-signature
- Mass imports
- Important date reminders
- SSO support

Employee Profiles

- Manager and employee self-service
- Employee biography and image
- Job & salary history
- Skill and experience tracking
- Unlimited custom fields

Time Off

- Unlimited time off plan types
- Unlimited company holiday schedules
- Automatic accruals (daily, weekly, semi-monthly, monthly, annually)
- Carryover rules
- Online PTO requests and approvals
- PTO notifications and alerts
- Company calendar view
- Google, Outlook and iCal integration

Reporting & Analytics

- Real-time custom reports
- Intuitive report builder with sorting, filters, and exports
- Reporting on custom fields
- Delivered best practice dashboards
- Multiple point-in-time filters
- Graphic visuals
- Export/download

Mobile

- Login TouchID or FaceID
- Profile overview
- Activity feed
- Employee directory
- PTO requests and approvals
- Holidays
- Paystub and balances
- W2s and 1099s*
- Benefits information*
- Office locations
- Company resources
- Namely Blogs
- Link to time entry*