


| Count | Description |
|-------|---|
| 1 | <p data-bbox="225 338 427 365">NBS 040-095/9.37</p>  <p data-bbox="619 638 1061 660">Product photo could vary from the actual product</p> <p data-bbox="225 672 486 694">Product No.: 92559756</p> <p data-bbox="225 757 1428 806">The pumps are non-self-priming, single-stage, centrifugal volute pumps with axial inlet port, radial outlet port and horizontal shaft.</p> <p data-bbox="225 817 1380 866">The pump has a back pull-out design enabling removal of the motor, motor stool, cover and impeller without disturbing the pump housing or pipework.</p> <p data-bbox="225 878 1388 900">All pumps are according to ISO 5199 standards, adjusted for American dimensions on pump and its flanges.</p> <p data-bbox="225 934 1417 983">Inlet and outlet flanges are according to ASME 16.1/16.42. Dimensions and rated performance are according to 175/363 PSI (12/25 bar).</p> <p data-bbox="225 1021 938 1043">The mechanical shaft seal has dimensions according to EN 12756.</p> <p data-bbox="225 1081 1372 1131">Motors are with main dimensions to NEMA standards. The pumps can be equipped with an MLE motor with integrated frequency converter or connected to a Grundfos CUE external frequency converter.</p> |



Company name:

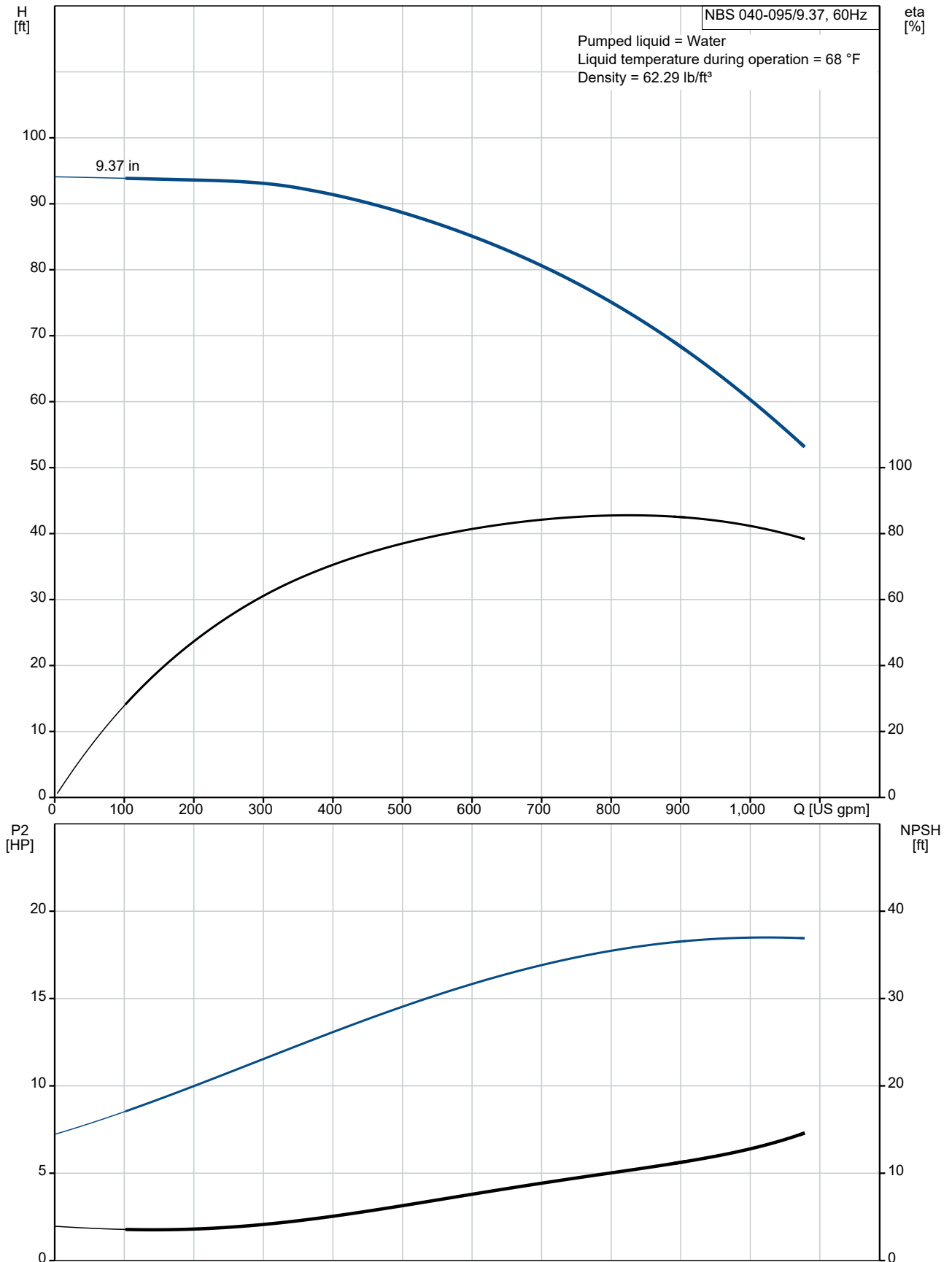
Created by:

Phone:

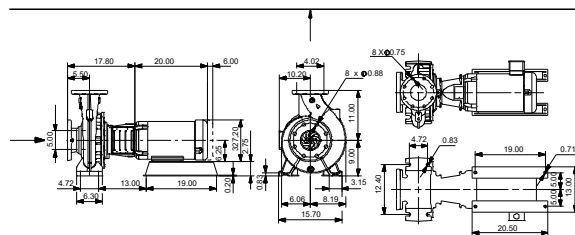
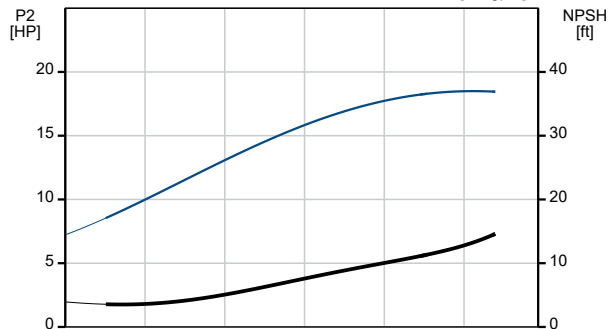
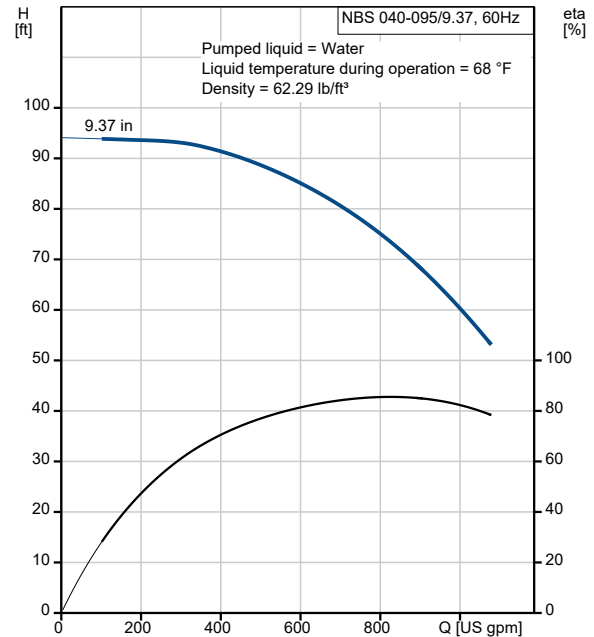
Date:

12/26/2021

92559756 NBS 040-095/9.37 AASG6S2ESBQQEOX4 60 Hz



| Description | Value |
|--|--------------------------------------|
| General information: | |
| Product name: | NBS 040-095/9.37 AASG6S2ESBQQEOX4 |
| Product No.: | 92559756 |
| EAN: | 5715116260648 |
| Price: | |
| Technical: | |
| Rated pump speed: | 1765 rpm |
| Rated flow: | 829 US gpm |
| Rated head: | 72.94 ft |
| Actual impeller diameter: | 9.37 in |
| Code for shaft seal: | BQQE |
| Curve tolerance: | 2B HI 14.6:2016 |
| Pump version: | A |
| Materials: | |
| Pump housing: | Cast iron |
| Pump housing: | EN-GJL-250 |
| Pump housing: | ASTM A48-35 |
| Impeller: | Stainless steel |
| Impeller: | EN 1.4308 |
| Impeller: | AISI 304 |
| Shaft: | Stainless steel |
| Shaft: | EN 1.4201/1.4034 |
| Shaft: | AISI 420 |
| Internal pump house coating: | No coating |
| Material code: | S2 |
| Code for rubber: | E |
| Installation: | |
| t max amb: | 104 °F |
| Maximum operating pressure: | 174.05 psi |
| Type of connection: | ANSI |
| Size of inlet connection: | DN 125 |
| Size of outlet connection: | DN 100 |
| Pressure rating for connection: | Class 125 |
| Mounting options design code: | B |
| Support block (Yes/No): | Y |
| Connect code: | G |
| Liquid: | |
| Pumped liquid: | Water |
| Liquid temperature range: | -13 .. 248 °F |
| Selected liquid temperature: | 68 °F |
| Density: | 62.29 lb/ft ³ |
| Electrical data: | |
| Motor standard: | NEMA |
| IE efficiency class: | IE3 / NEMA Premium |
| Rated power - P2: | 20 HP |
| Main frequency: | 60 Hz |
| Rated voltage: | 3 x 230/460 V |
| Rated current: | 48-24 A |
| Rated speed: | 1765 rpm |
| Number of poles: | 4 |
| Enclosure class (IEC 34-5): | TEFC |
| Mounting designation (IEC 34-7, Code I): | NEMA type C / foot |
| Others: | |
| DOE Pump Energy Index CL: | 0.94 |
| Net weight: | 614 lb |
| Gross weight: | 616 lb |
| Shipping volume: | 11.9 ft ³ |





Company name:

Created by:

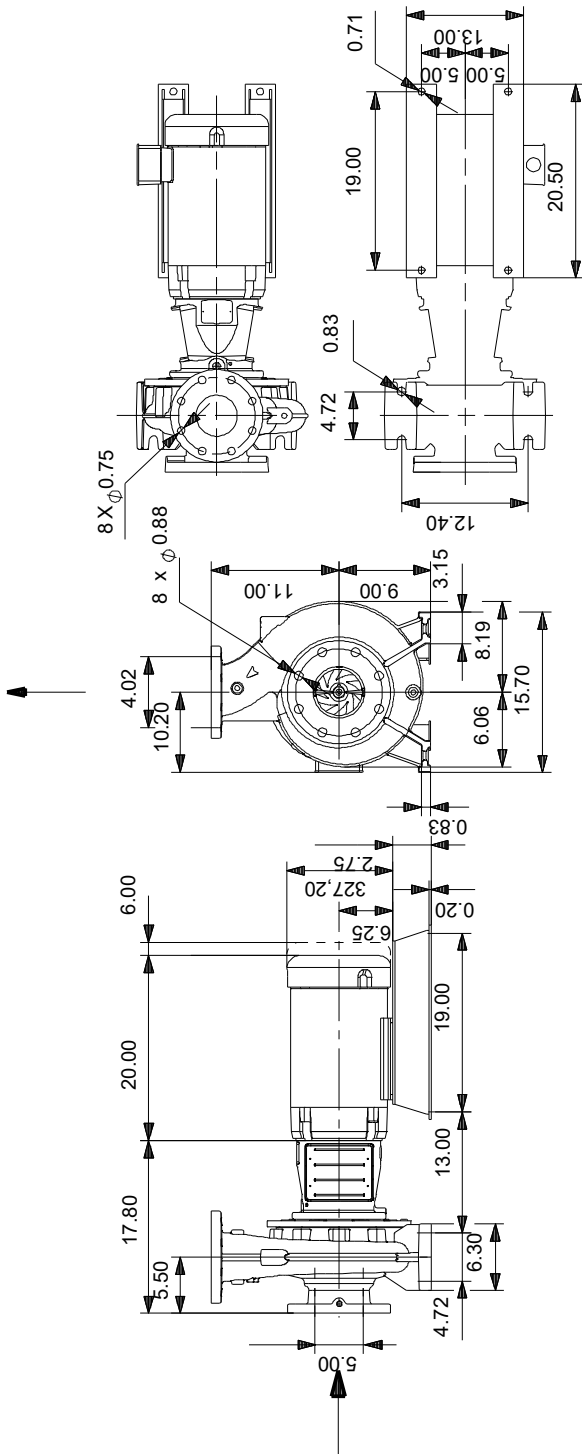
Phone:

Date:

12/26/2021

| Description | Value |
|--------------------|-------|
| Country of origin: | US |

92559756 NBS 040-095/9.37 AASG6S2ESBQQEOX4 60 Hz



Note! All units are in [in] unless otherwise stated.
 Disclaimer: This simplified dimensional drawing does not show all details.