

Harmony Browse

A Revolution in Web Security



With the number of remote workers surging geometrically during the COVID-19 pandemic there was a 3,900% increase globally in phishing and malware attacks during the first half of 2020. In many cases remote workers unwittingly put their organizations at risk by downloading infected files and visiting phishing sites where corporate credentials were stolen.

Harmony Browse enables users to safely browse the internet no matter where they are. It protects organizations and their employees from web-based threats by inspecting all SSL web traffic directly on the endpoint, using an innovative nano agent deployed within any browser. Harmony Browse prevents users from visiting zero-day phishing sites, downloading zero-day malware, accessing non-compliant websites, and reusing corporate passwords for non-business web content.

Unlike traditional web gateways, Harmony Browse delivers fast and private web access without re-routing and decrypting SSL traffic in the cloud or through an on-premises appliance.

KEY PRODUCT BENEFITS

- **Protects browsers from zero-day attacks:**
Prevents phishing attacks, malware downloads and credential re-use
- **Delivers fast and secure web access:**
Keeps workers productive and safe
- **Enforces users' internet data privacy:**
Keeps users' browsing history private, complying with data privacy regulations

UNIQUE PRODUCT CAPABILITIES

- Advanced technologies prevent zero-day malware downloads and block phishing sites with the market's best catch rate
- Delivers a fast web browsing experience with zero latency without re-routing traffic through the cloud for inspection
- Inspects SSL traffic within the browser without breaking SSL and hindering localization
- Single management over different platforms and browsers
- Deployed as a nano-agent within the browser, speeding implementation and reducing management overhead

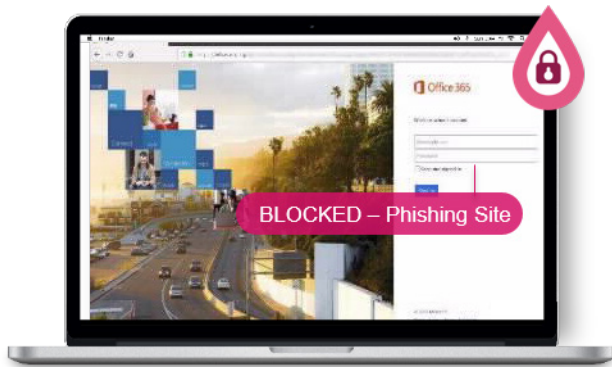
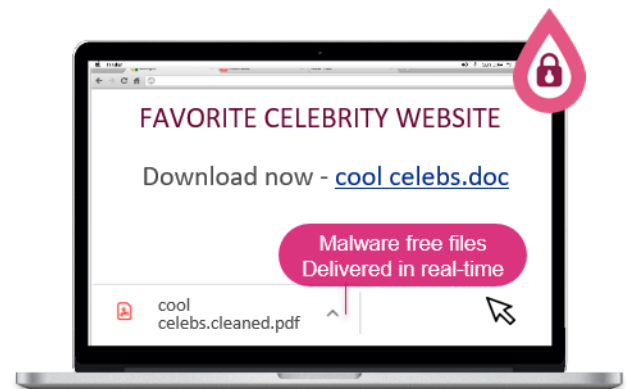
How it Works

Protects Browsers from Zero-Day Attacks

Harmony Browse blocks users from accidentally downloading malware, visiting phishing sites, accessing restricted websites, and reusing corporate passwords by employing Check Point's industry-leading Threat Prevention technologies directly from the endpoint's browser.

Prevents advanced threats in downloaded web content:

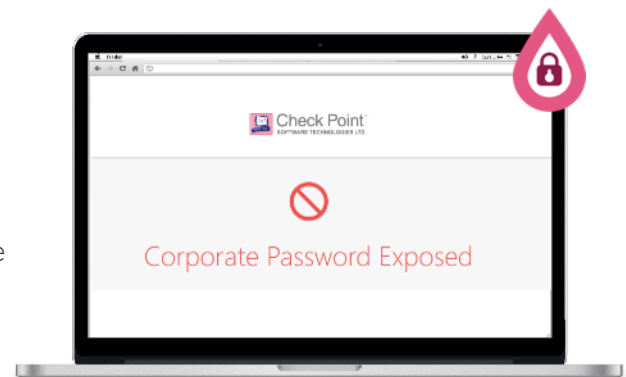
Every file downloaded through a browser is sent to the [Threat Emulation](#)® sandbox to inspect for malware. Simultaneously, Check Point's proactive content disarm and reconstruction (CDR) technology, [SandBlast Threat Extraction](#)®, delivers a sanitized version of the file in milliseconds. Together these technologies block all of the NSA's Top 25 CVEs for 2020.

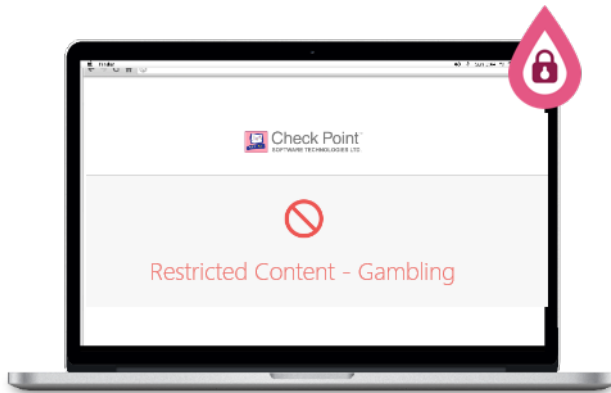


Blocks zero-day phishing sites designed to steal user credentials:

Harmony Browse prevents credential theft by utilizing [Check Point's Zero-Phishing](#)® technology to identify and block both known and unknown phishing sites. Sites are inspected within the user's browser, analyzing page visuals, text, and domains. If the site is found to be malicious, the user is blocked from entering their credentials. The result is the broadest phishing protection on the market.

Prevents misuse of corporate passwords: Re-using corporate passwords on unauthorized or non-business sites puts organizations at risk. Users may be targeted to gain access to corporate credentials for malicious purposes. Access to business services are kept safe when workers are blocked from re-using their corporate credentials on non-business-websites.





Reduces the attack surface by blocking access to websites deemed inappropriate by company policies: Harmony Browse URL filtering controls access to millions of websites by category, users, groups and machines to protect users from malicious sites to enforce a safe web browsing experience.

Delivers Fast and Secure Web Browsing

Zero latency assures a productive web browsing experience

Redirecting web traffic to secure web services for inspection creates latency and slows browsing. Harmony Browse inspects all SSL traffic within the web browser without re-routing traffic through a proxy, delivering a fast and productive user experience for workers from wherever they access the internet. In addition, Harmony Browse maintains the user's web browsing localized profile wherever they go.

Preserves Users' Internet Privacy

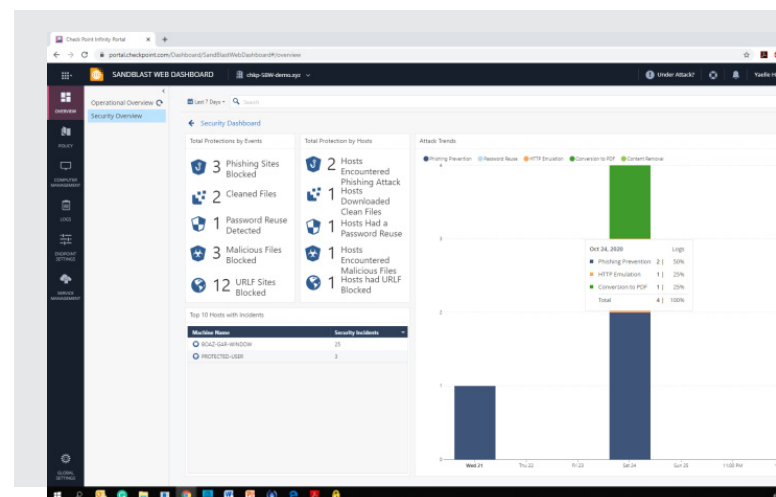
Protecting Users' Data Privacy is No Longer Optional

Inspecting workers' browsing with a secure web service is no longer acceptable, given today's data privacy regulations. Harmony Browse inspects all SSL traffic within the browser, assuring that users' internet data privacy is maintained. GDPR compliant, Harmony Browse keeps users' browsing history completely private.

An Innovative High Performance Architecture

Swiftly deployed and managed via an easy-to-use cloud service

Harmony Browse is deployed quickly as a nano-agent within a web browser over multiple platforms, speeding implementation, reducing management overhead, and eliminating complexity. It's simply uploaded to your organization's preferred management system and distributed to all managed PCs and browsers.



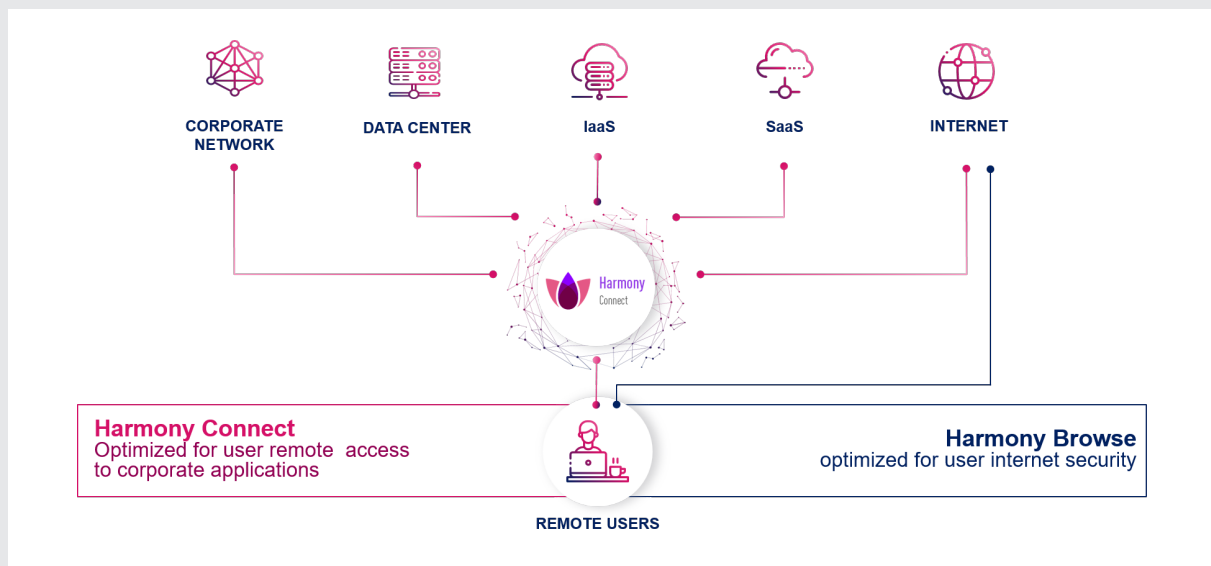
Harmony Browse provides an independent security layer for internet access that protects the last mile, capturing all threats that get through existing email security, endpoint security, and application security. Harmony Browse may be paired with any secure web gateway or endpoint security solution to provide enhanced web security.

Managed via a cloud service, Harmony Browse is simply provisioned and easy to manage, enabling complete monitoring, full redundancy, and automatic backups.

Integrates with Harmony Connect

Harmony Browse is built into Check Point's SASE solution

Harmony Connect, Check Point's Secure Access Service Edge, or SASE solution, combines cloud-based protection, with in-browser protection provided by Harmony Browse. These two layers work together to provide superior security and a superior user experience.



Whenever there is a web session that can be fully protected inside the browser, Harmony Connect allows the connection to go directly to the internet using Harmony Browse, bypassing the cloud. This helps users get faster access and better privacy, while also ensuring the session is fully protected in the browser. If, however, the user connects to the internet without a browser then the session is protected by the Harmony Connect cloud.

Technical Specifications

HARMONY WEB PACKAGES	
Packages	Harmony Browse – Includes user credential compromise protection, Anti-Malware, Zero-day Phishing, URL filtering
OPERATING SYSTEMS	
Operating System	<ul style="list-style-type: none"> • Windows Workstation 7, 8, and 10 • MacOS Sierra 10.12.6 • MacOS High Sierra 10.13.4 (Threat Emulation, Threat extraction, Chrome for Mac Harmony Browse Extension) • Chromebook – Chrome OS 85.0.410X.X
BROWSERS	
Browsers	<ul style="list-style-type: none"> • Chrome (Windows 10, MacOS) • Firefox (Windows10, MacOS) • Edge Chromium (Windows 10)
Browser permissions	<ul style="list-style-type: none"> • Read and change all on visited website • Read and change browsing history • Display notifications: Warnings and blocking • Manage downloads • Open downloaded files
WEB PROTECTION	
Threat Extraction	<ul style="list-style-type: none"> • Removes exploitable content, reconstructs files to eliminate potential threats and delivers sanitized content to users in a few seconds. (Content Disarm & Reconstruction) • File type support: Adobe PDF, Microsoft Word, Excel, and PowerPoint
Threat Emulation	<ul style="list-style-type: none"> • Threat sandboxing to detect and block unknown malware and targeted attacks found in downloaded files, and URLs to linked files within emails • Provides protection across widest range of file types, includes MS Office, Adobe PDF, Java, Flash, executables, and archives, as well as multiple Windows OS environments. • Uncovers threats hidden in SSL and TLS encrypted communications.
Zero-Phishing	<ul style="list-style-type: none"> • Real-time protection from unknown phishing sites • Static and heuristic-based detection of suspicious elements across websites requesting private info
Corporate Credential Protection	<ul style="list-style-type: none"> • Detection of corporate credentials reuse on external sites.
URL Filtering	<ul style="list-style-type: none"> • Allow/block access to websites in real-time • Enforces organization policy for safe internet for users on/off organization premises, enforces regulation compliance, improve organization productivity
HTTPS Inspection	Full visibility to HTTPS traffic.

COMPLIANCE		
Super categories	Category	
General use	<ul style="list-style-type: none"> • Blogs / Personal Pages • Business / Economy • Computers / Internet Education • Email • Entertainment • Fashion • Financial Services • General • Government / Military • Greeting Cards • Health • Lifestyle • Nature / Conservation • News / Media • Newsgroups / Forums • Non-profits & NGOs • Political / Legal • Real Estate 	<ul style="list-style-type: none"> • Recreation • Religion • Restaurants / Dining / Food • Search Engines / Portals • Shopping • Software Downloads • Sports • Translation • Travel • Uncategorized • Vehicles • Very Low Risk • Job Search / Careers • Alcohol & Tobacco • Sex Education • Web Advertisements • Lingerie and Swimsuit / Suggestive
Security	<ul style="list-style-type: none"> • Anonymizer • Botnets • Critical Risk • High Risk • Inactive Sites 	<ul style="list-style-type: none"> • Medium Risk • Phishing • Spam • Spyware / Malicious Sites • Suspicious Content
Legal liability / Regulatory compliance	<ul style="list-style-type: none"> • Child Abuse • Illegal / Questionable • Illegal Drugs • Nudity • Pornography • Sex • Tasteless 	<ul style="list-style-type: none"> • Violence • Weapons • Hacking • Hate / Racism • Gambling • Marijuana
Productivity loss	<ul style="list-style-type: none"> • Games • Instant Chat • Instant Messaging 	<ul style="list-style-type: none"> • Personals / Dating • Social Networking
Bandwidth consumption	<ul style="list-style-type: none"> • File Storage and Sharing • Media Sharing 	<ul style="list-style-type: none"> • Media Streams • P2P File Sharing
Cloud Management	SandBlast Service (Hosted on Check Point cloud), managed using a dedicated Infinity Portal dashboard.	
Policy Management	Users, Hosts Policy Management	
Event Monitoring	Monitoring with Check Point logs and events management solutions: SmartLog, SmartEvent	
Web Management Version	R80.30, R80.40	

Why Harmony Browse?

Threat actors shifted their targets when the world moved to a remote workforce following the Covid-19 pandemic. Phishing and malware attacks increased exponentially. Harmony Browse protects remote workers and delivers web security by employing Check Point's industry-leading threat prevention technologies directly from the endpoint's browser.

Harmony Browse prevents users' unplanned malicious behaviors, blocking them from accidentally visiting phishing sites, downloading malware, accessing restricted sites and re-using corporate passwords.

Harmony Browse preserves a fast web browsing user experience, while enforcing its considerable protections. Users' browsing history is kept private, allowing organizations to comply with data privacy regulations.

Finally, Harmony Browser employs a high-performance architecture. It is deployed as a nano agent within the browser, eliminating complexity. It can be used on endpoints by itself, or paired with any endpoint solution or secure web gateway for added security protections.

Secure Users, Devices and Access with Harmony

Harmony Browse is part of the Check Point Harmony product suite, the industry's first unified security solution for users, devices and access. Harmony consolidates six products to provide uncompromised security and simplicity for everyone. It protects devices and internet connections from the most sophisticated attacks while ensuring Zero-Trust Access to corporate applications - all in a single solution that is easy to use, manage and buy.

Worldwide Headquarters

5 Ha'Solelim Street, Tel Aviv 67897, Israel | Tel: 972-3-753-4555 | Fax: 972-3-624-1100 | Email: info@checkpoint.com

U.S. Headquarters

959 Skyway Road, Suite 300, San Carlos, CA 94070 | Tel: 800-429-4391; 650-628-2000 | Fax: 650-654-4233

www.checkpoint.com