



Work That Matters
Since 1999

First Choice In-Home Care Organization Chart

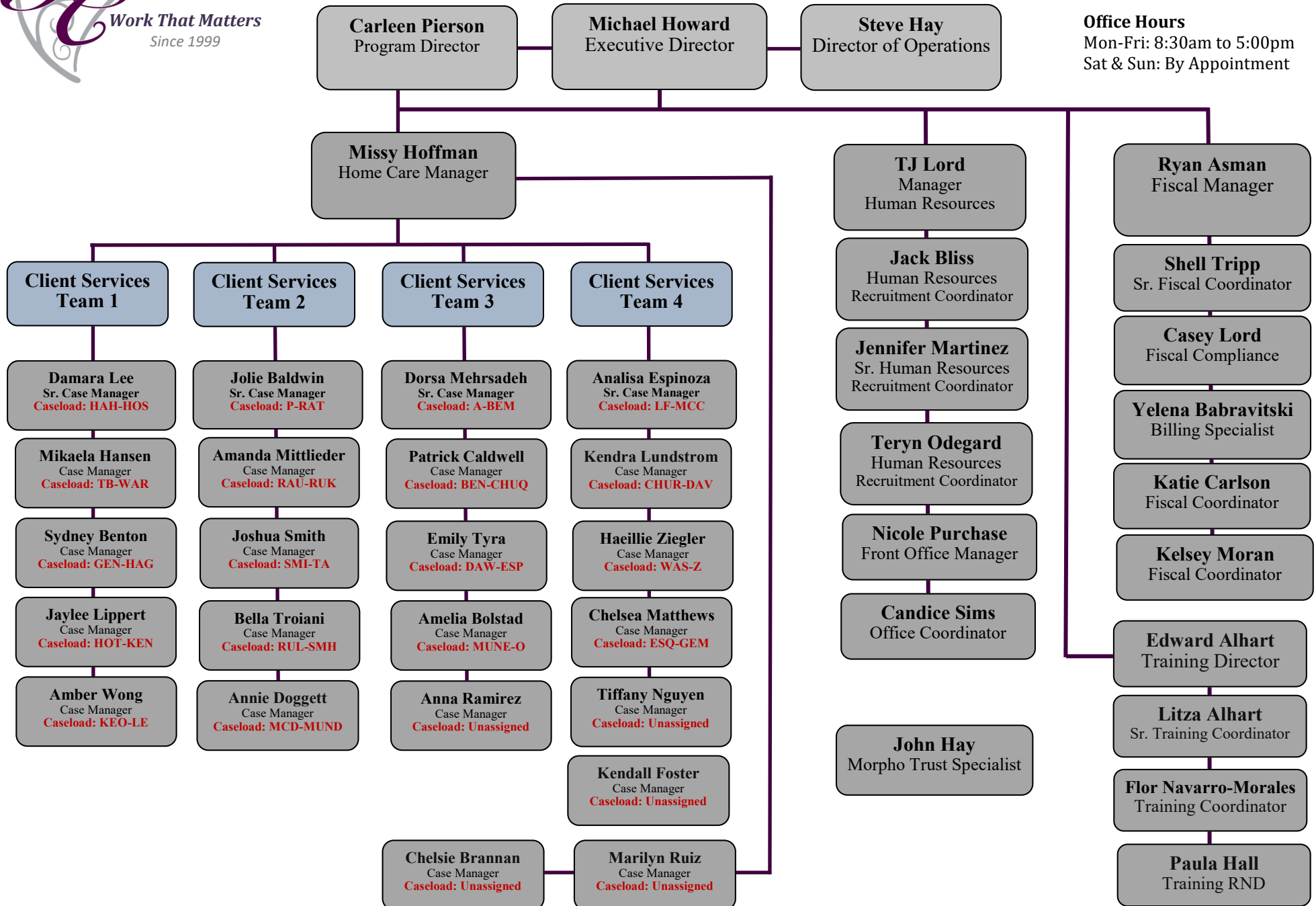
Toll Free: 1-877-747-5090

Web Site: www.fcihc.com

Office Hours

Mon-Fri: 8:30am to 5:00pm

Sat & Sun: By Appointment





First Choice In-Home Care

Client Services Staff Roster

Case Management Staff

Amanda Mittlieder	AMittlieder@fcihc.com	Caseload Unassigned
Amber Wong	AWong@fcihc.com	Caseload KEO-LE
Amelia Bolstad	ABolstad@fcihc.com	Caseload MUNE-O
Analisa Espinoza-Lopez	AEspinoza-Lopez@fcihc.com	Caseload LF-MCC
Annie Doggett	MDoggett@fcihc.com	Caseload MCD-MUND
Bella Troiani	ITroiani@fcihc.com	Caseload RUL-SMH
Carly Kyle	CKyle@fcihc.com	Caseload RAU-RUK
Chelsea Matthews	CMatthews@fcihc.com	Caseload ESQ-GEM
Damara Lee	DLee@fcihc.com	Caseload HAH-HOS
Dorsa Mehrsadeh	DMehrsadeh@fcihc.com	Caseload A-BEM
Emily Tyra	ETyra@fcihc.com	Caseload DAW- ESP
Haellie Ziegler	HZiegler@fcihc.com	Caseload WAS-Z
Jaylee Lippert	JLippert@fcihc.com	Caseload HOT-KEN
Jolie Baldwin	JBaldwin@fcihc.com	Caseload P-RAT
Josh Smith	JSmith@fcihc.com	Caseload SMI-TA
Kendra Lundstrom	KLundstrom@fcihc.com	Caseload CHUR-DAV
Mikaela Hansen	MHansen@fcihc.com	Caseload TB-WAR
Patrick Caldwell	PCaldwell@fcihc.com	Caseload BEN-CHUQ
Sydney Benton	SBenton@fcihc.com	Caseload GEN-HAG
Tiffany Nguyen	TNguyen@fcihc.com	Caseload Unassigned

Home Care Manager and Program Manager Staff

Referral Email: HCM@fcihc.com

Angela Gaviglio	AGaviglio@fcihc.com	King & Snohomish County Program Manager
Carleen Pierson	CPierson@fcihc.com	Program Director
Missy Hoffman	MHoffman@fcihc.com	King & Snohomish County Home Care Manager
Shannon Bereiter	SBereiter@fcihc.com	Pierce County Program Manager
Julia White	JWhite@fcihc.com	Pierce County Home Care Manager