

A Collaboration of  and  insider

# SAP Enterprise Architect Global Summit

Virtual Event - March 1-3, 2022

## **Early Bird Live – Shape Your Future Application Lifecycle Management Strategy**

John Krakowski, SAP

Evan Stoddard, SAP



# Disclaimer

The information in this presentation is confidential and proprietary to SAP and may not be disclosed without the permission of SAP. Except for your obligation to protect confidential information, this presentation is not subject to your license agreement or any other service or subscription agreement with SAP. SAP has no obligation to pursue any course of business outlined in this presentation or any related document, or to develop or release any functionality mentioned therein.

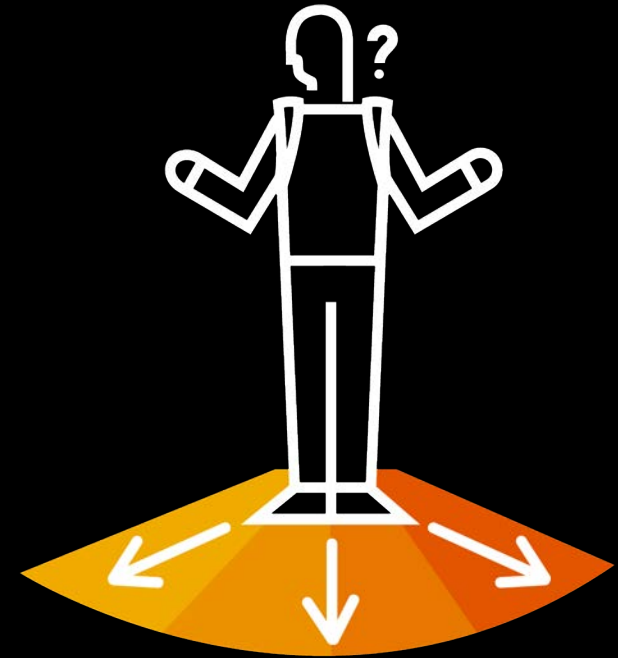
This presentation, or any related document and SAP's strategy and possible future developments, products and or platforms directions and functionality are all subject to change and may be changed by SAP at any time for any reason without notice. The information in this presentation is not a commitment, promise or legal obligation to deliver any material, code or functionality. This presentation is provided without a warranty of any kind, either express or implied, including but not limited to, the implied warranties of merchantability, fitness for a particular purpose, or non-infringement. This presentation is for informational purposes and may not be incorporated into a contract. SAP assumes no responsibility for errors or omissions in this presentation, except if such damages were caused by SAP's intentional or gross negligence.

All forward-looking statements are subject to various risks and uncertainties that could cause actual results to differ materially from expectations. Readers are cautioned not to place undue reliance on these forward-looking statements, which speak only as of their dates, and they should not be relied upon in making purchasing decisions.

# Questions?

If you have questions during the session, please use the **Q&A functionality** in Zoom.

We will answer your questions during our Demo and Q&A time slots.



A Collaboration of  and 

# SAP Enterprise Architect Global Summit

Virtual Event - March 1-3, 2022

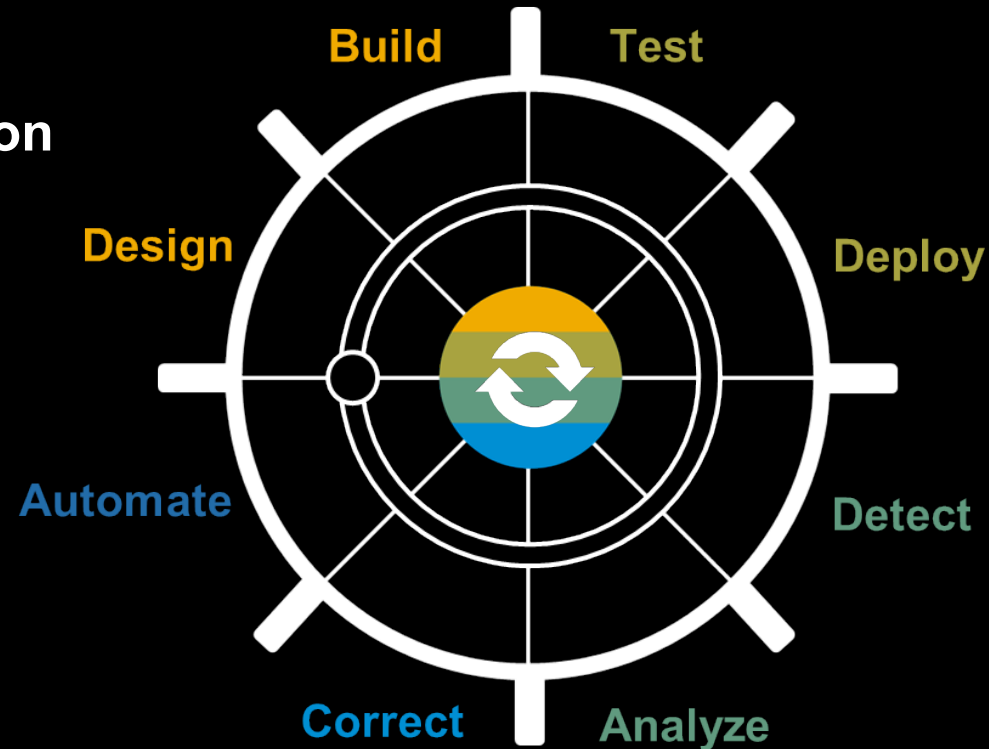
## ALM for the Intelligent Enterprise



# Application Lifecycle Management (ALM) for the Intelligent Enterprise

Everything you need to manage the Intelligent Enterprise

from Implementation



to Operations.

# Do you leverage all ALM values?



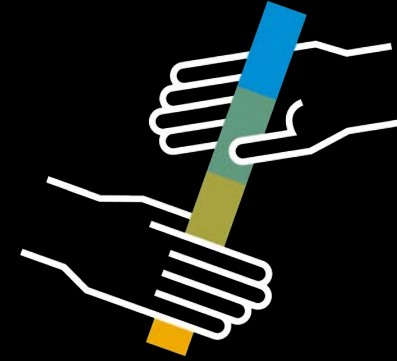
## Start Running

- Accelerate time to value
- Reduce cost of implementation



## Keep Running

- Ensure business continuity
- Reduce cost of operations



## Run with the Best

- Don't re-invent the wheel
- Use best-of-suite

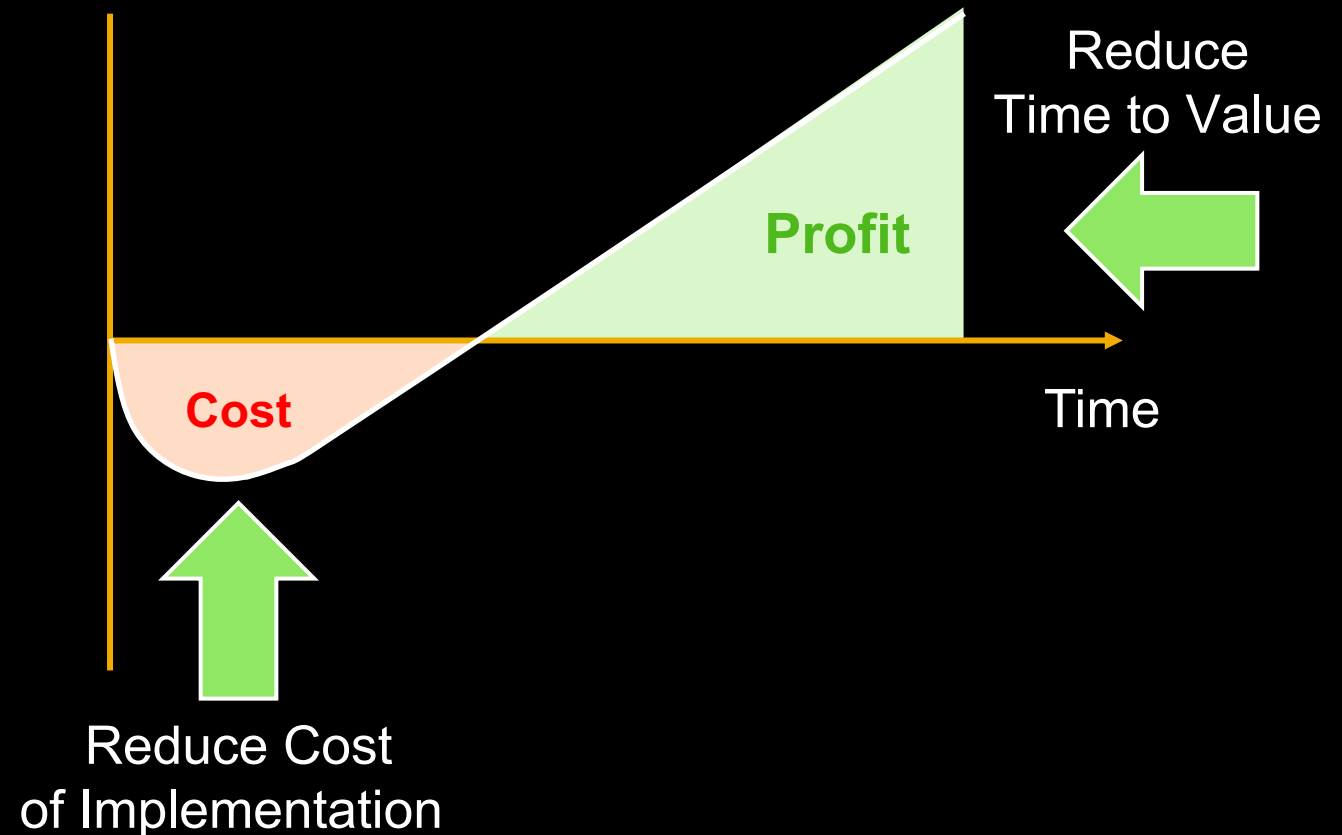
# Start Running

Speed up innovation



## Accelerate **Time to Value** and Reduce **Cost of Implementation**

- Leverage pre-configuration
- Follow agile implementation approach
- Only test what matters
- Accelerate test management and execution
- Automate tasks
- Avoid custom code



# Keep Running

Ensure efficient IT operations

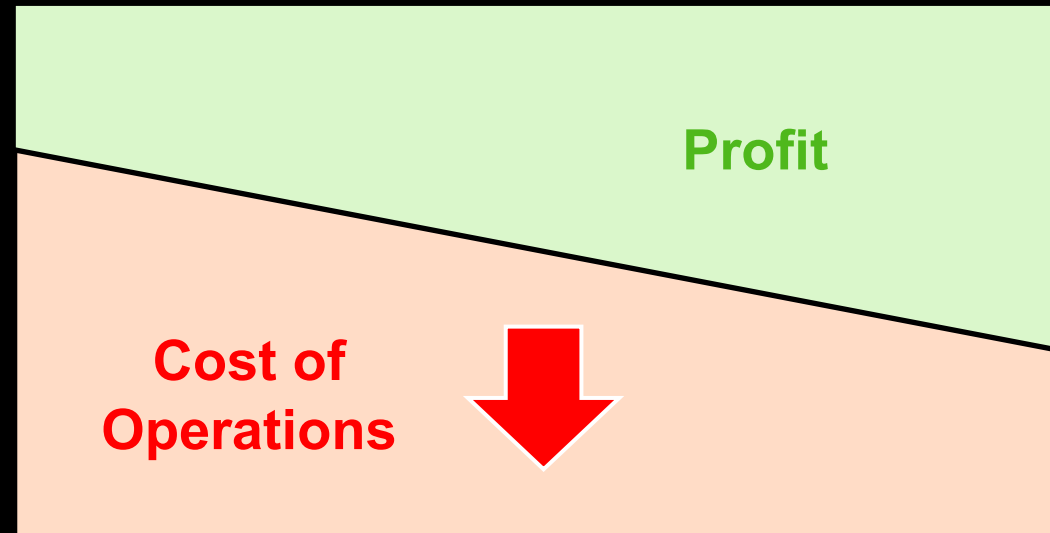
## Ensure Business Continuity

- Analyze risks
- Detect problems pro-actively
- Accelerate problem resolution
- Improve business operations

## Reduce Cost of Operations

- Apply best practices
- Standardize processes
- Centralize operations
- Automate processes

The average cost of 1 minute downtime is more than 5,000 US\$ (including production loss) \*)



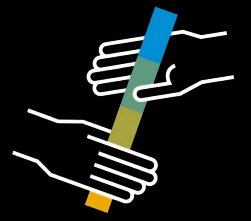
Reduce cost of operations to have more budget for value-generating projects

\*) Gartner, 2014



# Run With the Best

ALM from SAP



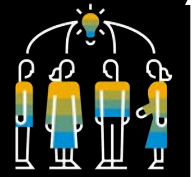
## Don't re-invent the wheel

- Learn from the ALM community
- Implement community-proven practices
- Collaborate with peers

## Use best-of-suite

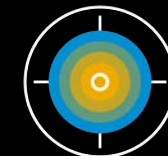
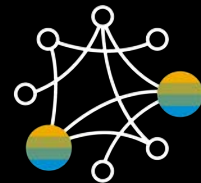
- Run one integrated ALM
- Fulfil all your ALM needs
- Join thousands of successful ALM customers

**Accelerate  
ALM adoption**



**Your  
best-run  
ALM**

**Standardize  
ALM**



# The Application Lifecycle Management Product Portfolio of SAP

**SAP Solution Manager**  
for hybrid solutions



**SAP Focused Run**  
for hybrid solutions



**SAP Cloud ALM**  
for multi cloud solutions



**Three strategic ALM solutions to match customer reality!**

# SAP Enterprise Architect Global Summit

Virtual Event - March 1-3, 2022

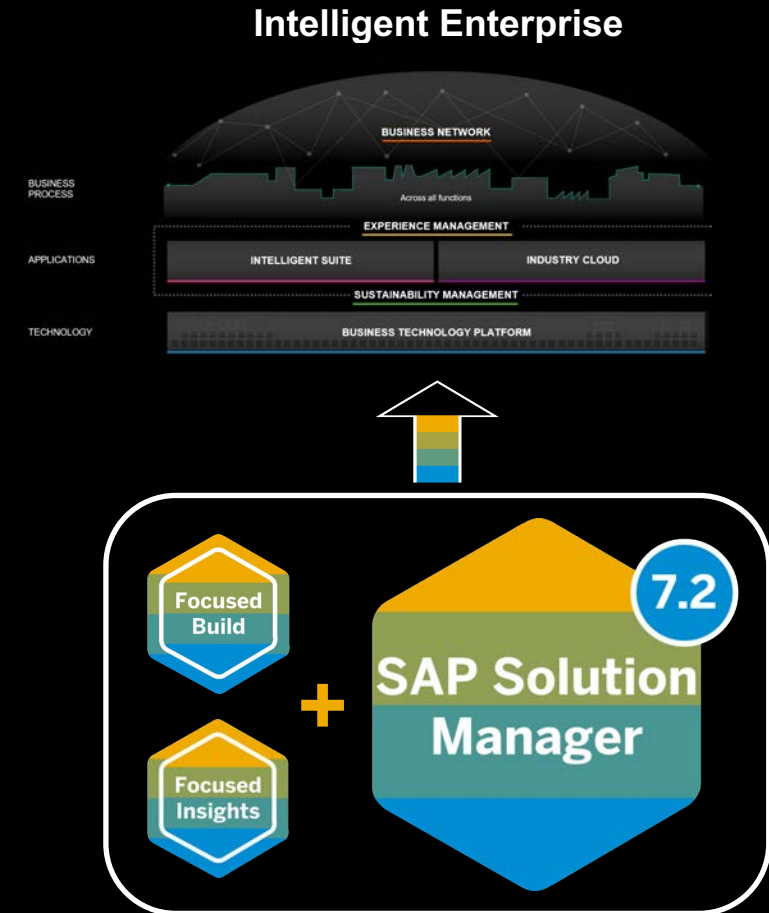
## SAP Solution Manager



# SAP Solution Manager

## SAP Solution Manager offers:

- A centralized application management and administration solution used to implement, support, operate, and monitor your SAP enterprise solutions.
- Integrated content, tools, methodologies, and access to your solution landscape running on premise, hybrid, or in the cloud.
- Streamlined business processes and proactive improvement options
- Increased efficiency and decreased risk within your existing maintenance agreement.
- An integrated process flow to run agile implementation projects including comprehensive end-to-end analytics and reporting.



SAP Solution Manager is the key driver for your **transition to the Intelligent Enterprise.**

# SAP Solution Manager Overview

## *SAP Solution Manager brings direct value to your business:*

### **Business continuity**

- Reduce very high incidents
- Decrease change related outages
- Increase system performance

### **Time to market**

- Deliver faster from requirement to deployment
- Reduce test phase duration
- Manage custom code

### **Efficiency**

- More projects with the same staff
- Reduced test effort

### **Compliance**

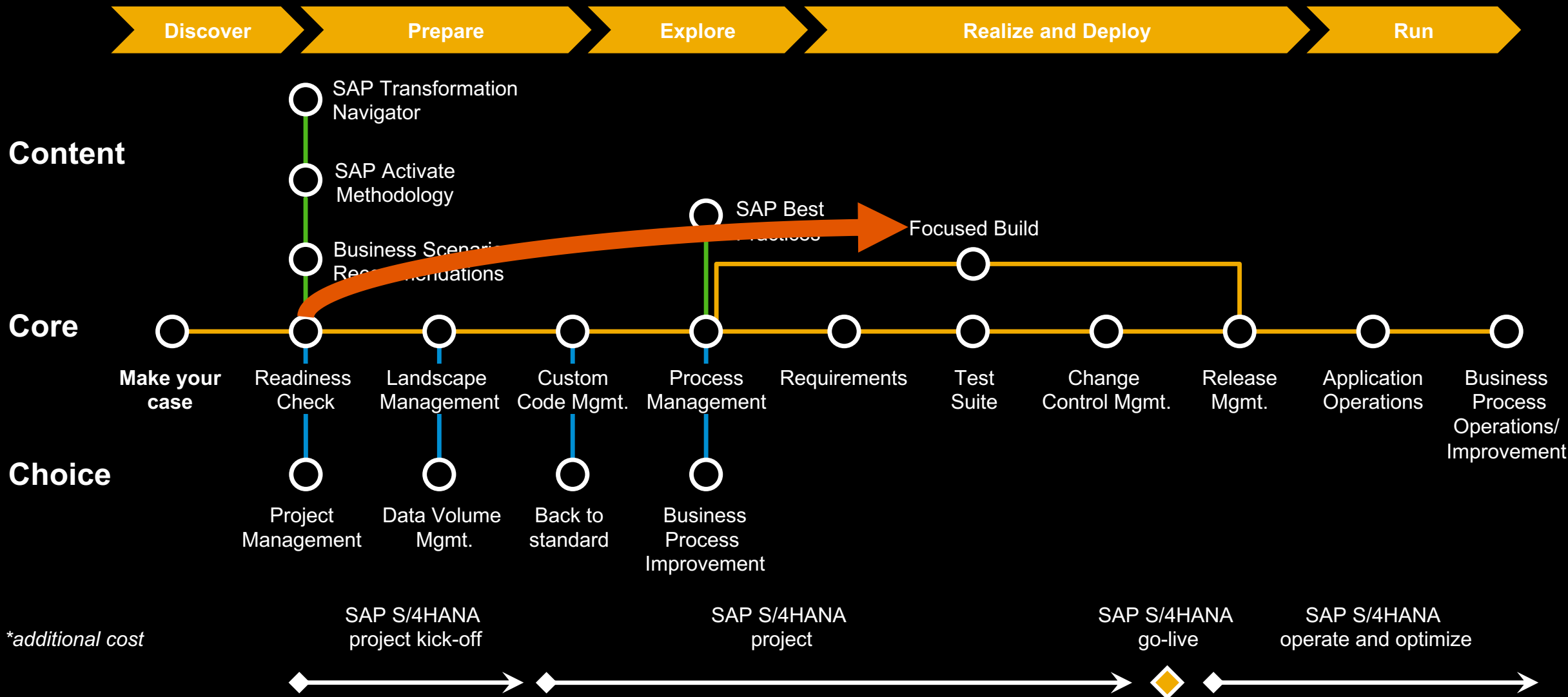
- Improved audit ratings
- Solution documentation as a “single source of the truth”



## **SAP Solution Manager supports 10 functional areas of the application lifecycle**

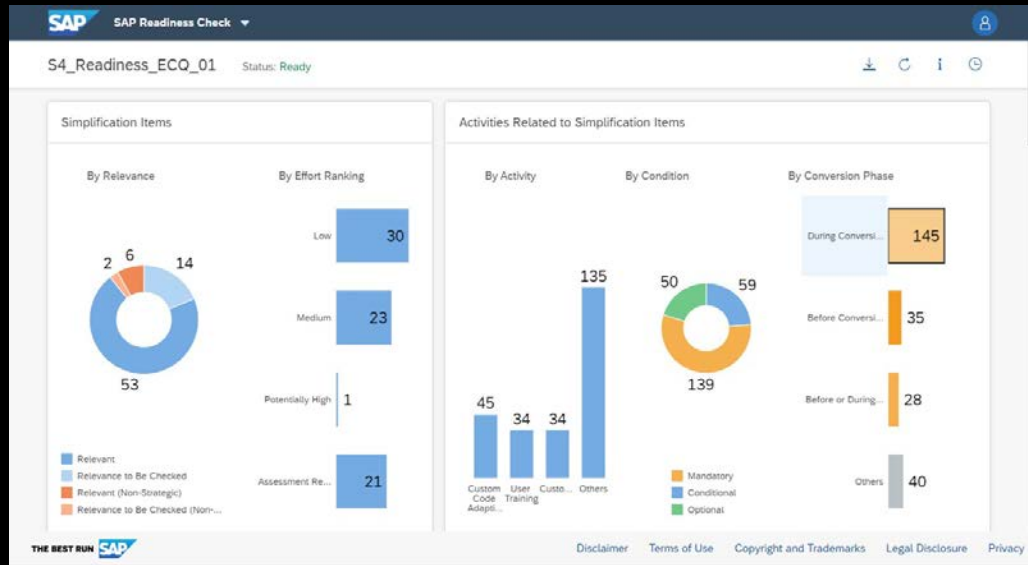
- Project Management
- Process Management
- Custom Code Management
- Test Suite
- Change Control Management
- IT Service Management
- Landscape Management
- Data Volume Management
- Application Operations
- Business Process Operations

# How SAP Solution Manager supports SAP S/4HANA



# Conversion project support for SAP S/4HANA

## Overview



SAP Readiness Check for SAP S/4HANA



Export,  
import



# Demo Time!



## SAP Cloud ALM

Application Lifecycle Management (ALM) for cloud-centric customers

<p>Get the idea</p> <p>to understand the value of SAP Cloud ALM for your business.</p> <p>Learn</p>	<p>Watch recorded demos</p> <p>to learn about the capabilities of SAP Cloud ALM.</p> <p>Watch</p>	<p>Try it out now</p> <p>to explore the simplified ALM experience.</p> <p>Explore</p>	<p>Start using it</p> <p>to get the full benefits of SAP Cloud ALM.</p> <p>Request</p>

<https://support.sap.com/cloud-alm>



# What's New in SAP Solution Manager 7.2 SPS14

## Process Management

- Automatic generation of all used Fiori apps based on real system data in the Executable Library
- Value help when documenting Fiori apps manually



## Test Suite

- External test tool synchronization can send execution results to test packages in the Test Suite
- Edit test documents online with any supported browser
- Where-used list in the Test Repository to find where a test script is used

## Solution Operations

- Improved documentation of outages that span over a month's end in Service Availability Management
- Direct navigation from a Job Alert to the managed system
- Job documentation reorganization report enhanced to remove obsolete documents after a retention time

## Configuration

- SAP Passport can now be used when connecting to SAP instead of user/password authentication

A Collaboration of  and 

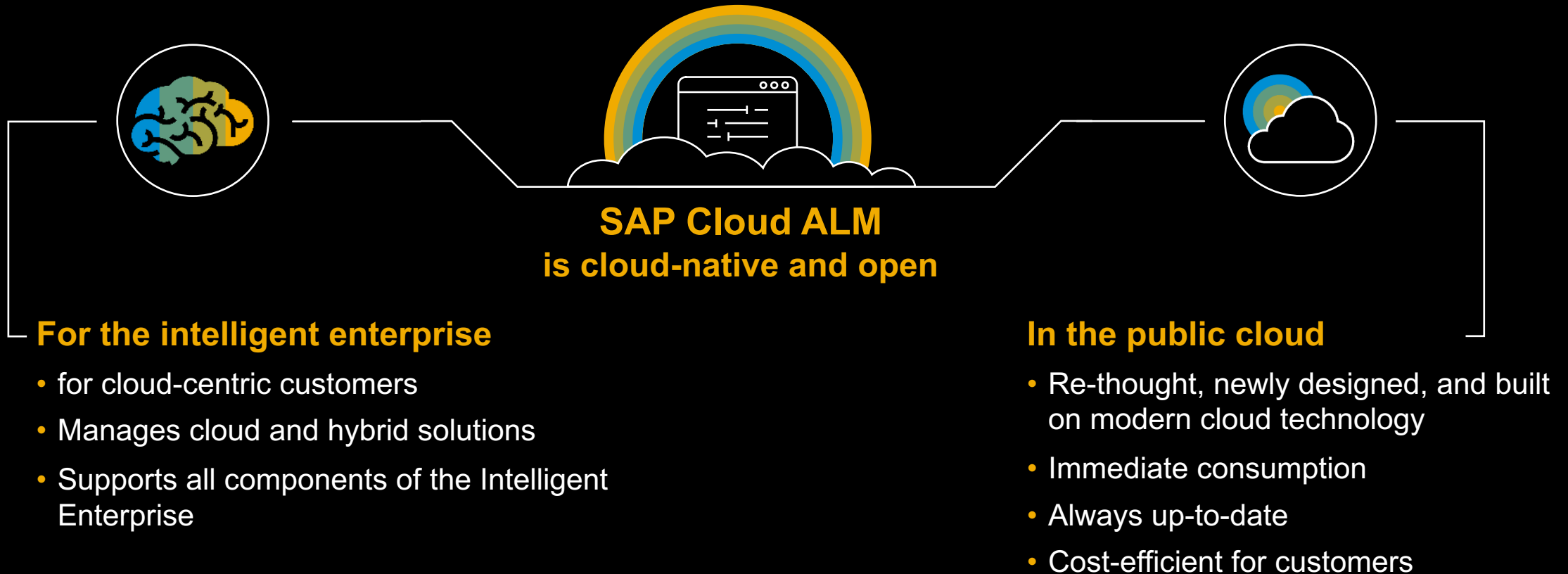
# SAP Enterprise Architect Global Summit

Virtual Event - March 1-3, 2022

## SAP Cloud ALM

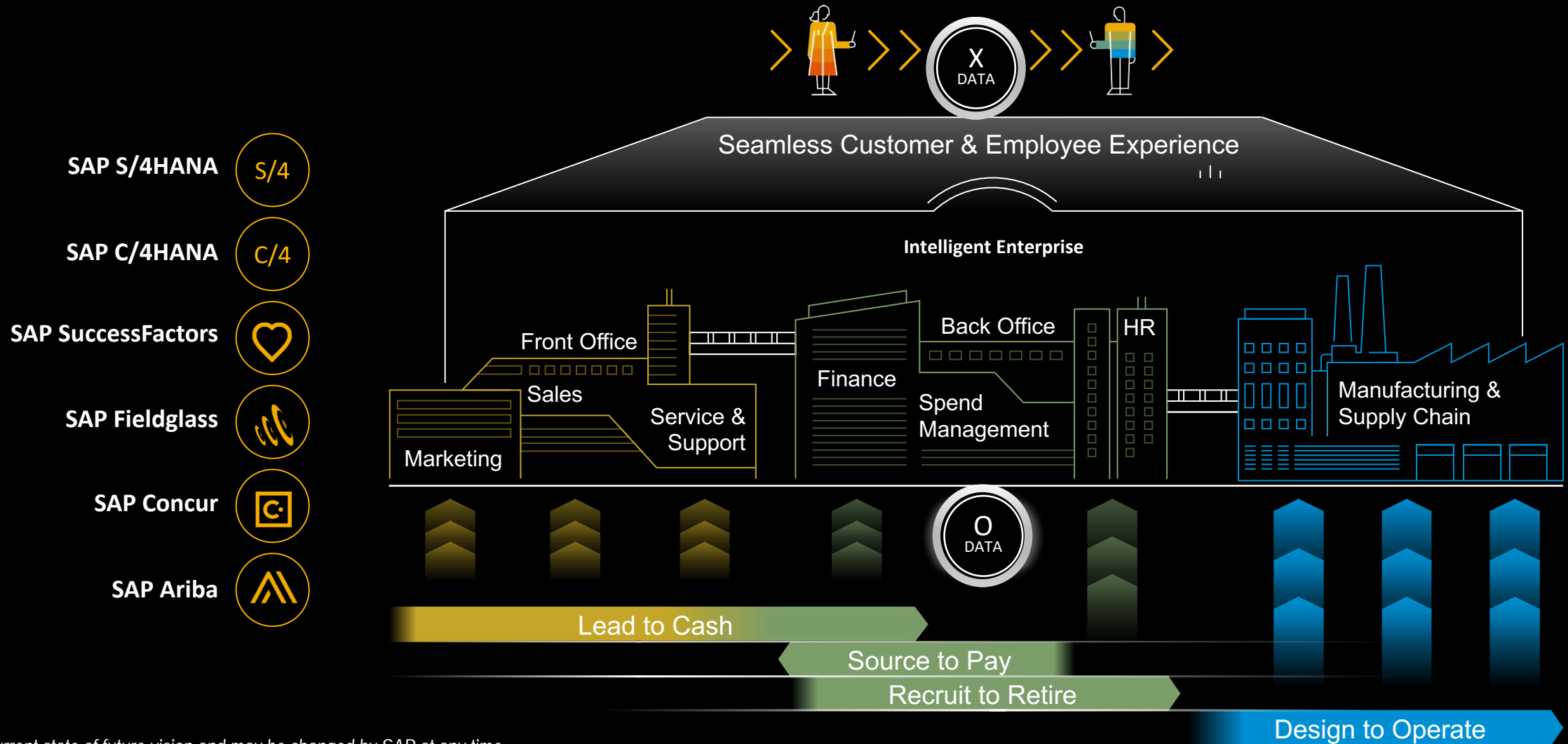


# SAP Cloud ALM – A brand-new, **cloud-based ALM** offering



The **Speed** of SAP Cloud ALM: **15min** to provision, **daily** deployment, **biweekly** feature releases

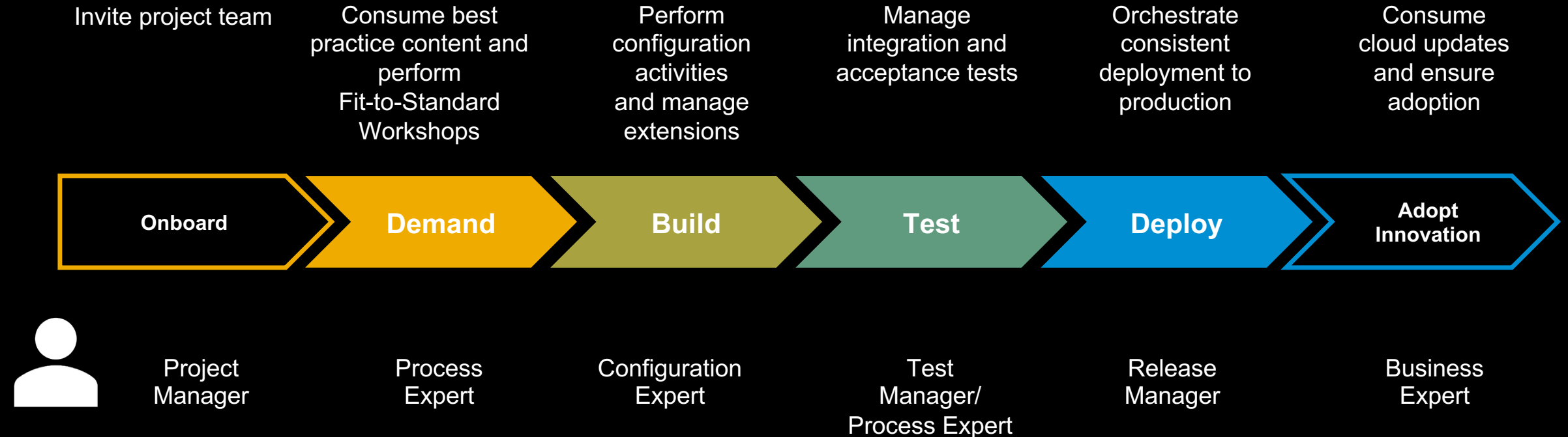
# Integrated, end-to-end business processes for the entire value chain require Application Lifecycle Management (ALM)



This is the current state of future vision and may be changed by SAP at any time.

# SAP Cloud ALM

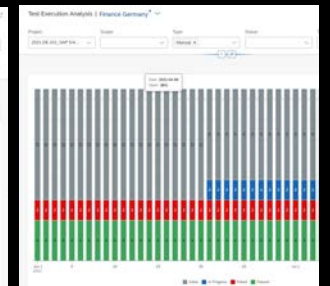
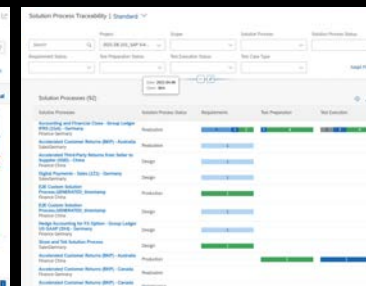
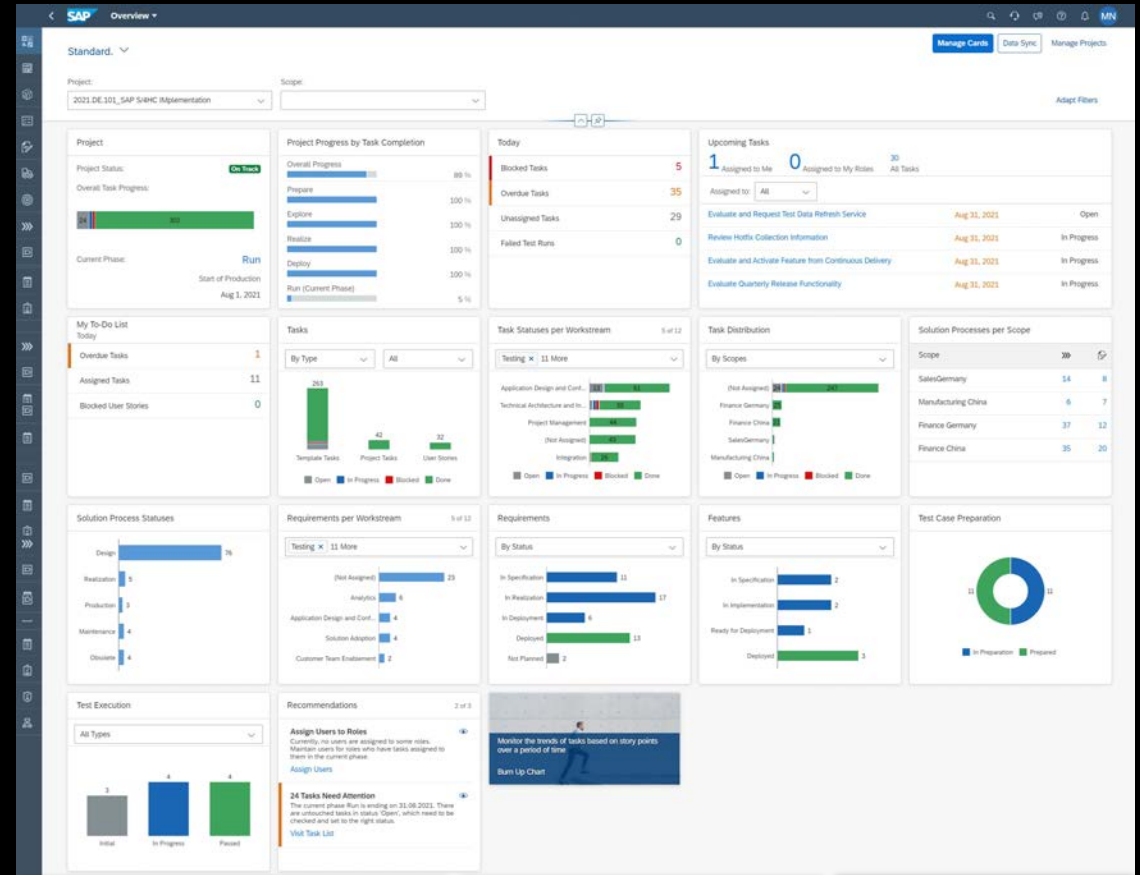
Harmonized, Content-Driven Implementation of the Intelligent Enterprise



# Did you know how to ... Gain transparency of your project?

Use the **Overview Page** and **Analytics App** in SAP Cloud ALM

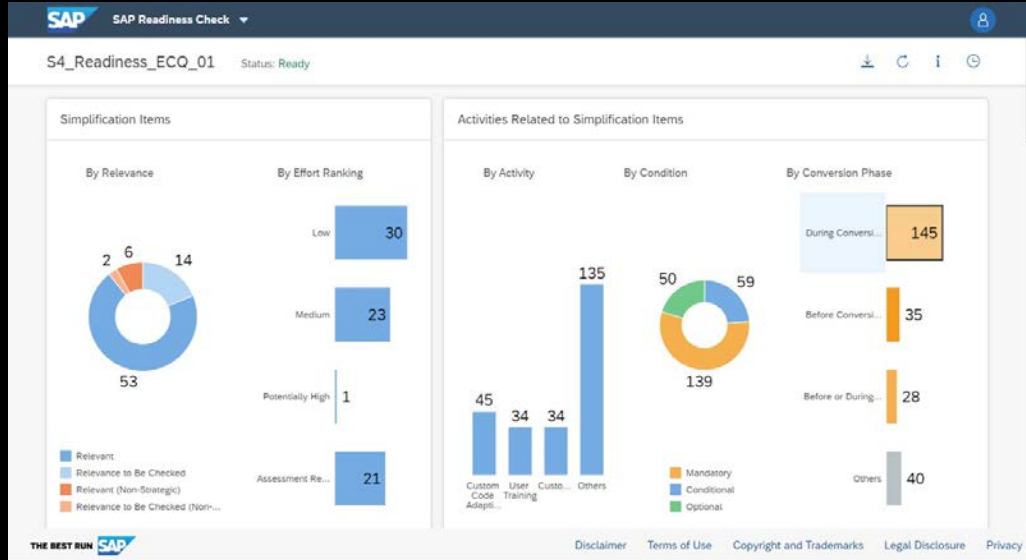
- Gain high-level overview
  - Project progress, tasks status, requirements status, solution process status, test cases and execution
- Drill down to detailed Analytics
  - Traceability, trend analysis, historical analysis, progress reports
- Ease project reporting



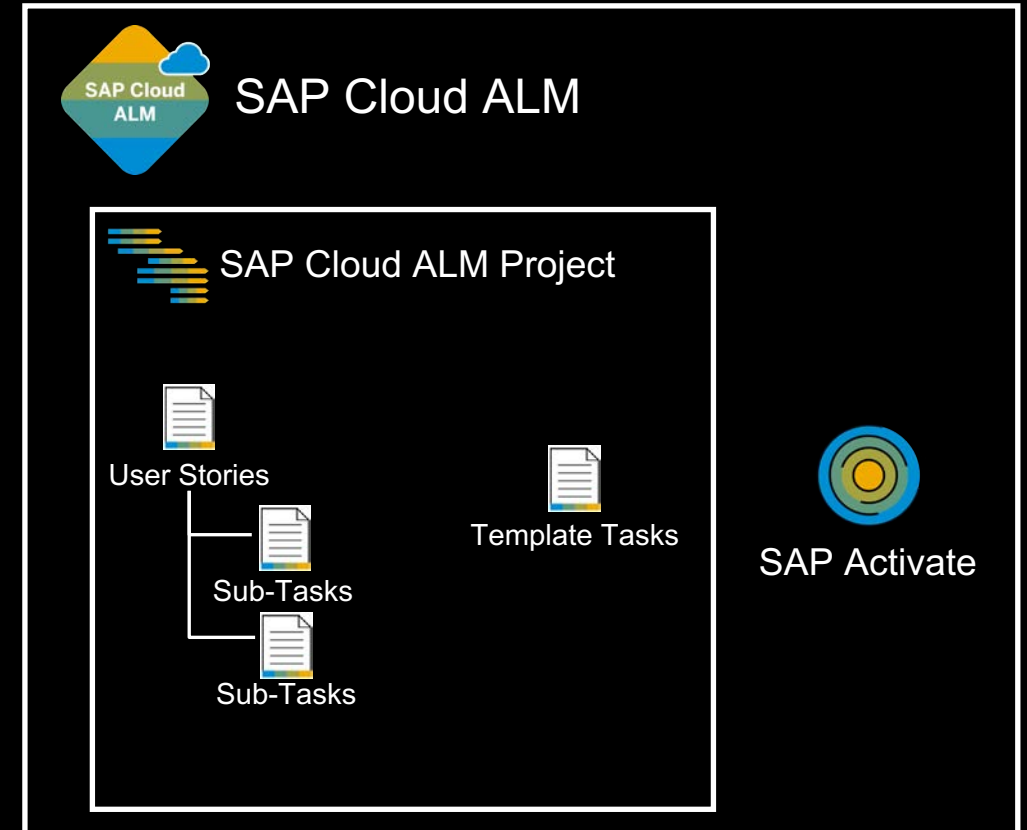
Understand [Project Analytics](#) in SAP Cloud ALM!

# Conversion project support for SAP S/4HANA

## Integration into SAP Cloud ALM



SAP Readiness Check for SAP S/4HANA



# Demo Time!



## SAP Cloud ALM

Application Lifecycle Management (ALM) for cloud-centric customers

Get the idea	Watch recorded demos	Try it out now	Start using it
to understand the value of SAP Cloud ALM for your business.	to learn about the capabilities of SAP Cloud ALM.	to explore the simplified ALM experience.	to get the full benefits of SAP Cloud ALM.
<a href="#">Learn</a>	<a href="#">Watch</a>	<a href="#">Explore</a>	<a href="#">Request</a>

<https://support.sap.com/cloud-alm>



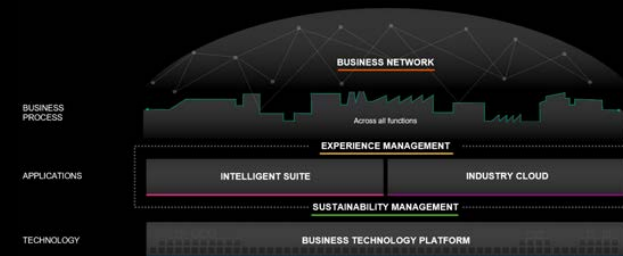
# SAP Cloud ALM – Implementation Value Summary

*Accelerated time to market, reduced cost of implementation.*

Power and Insights to drive your SAP cloud projects, through guidance on all implementation steps:

- Onboard team members and assign tasks
- Understand best practices processes and SAP Activate roadmap
- Scope and execute Fit-to-Standard workshops
- Manage requirements, tests, and the successful go-live
- Support agile implementation projects
- Integration with Test Automation Tools
- Provide full traceability from requirements to deployments

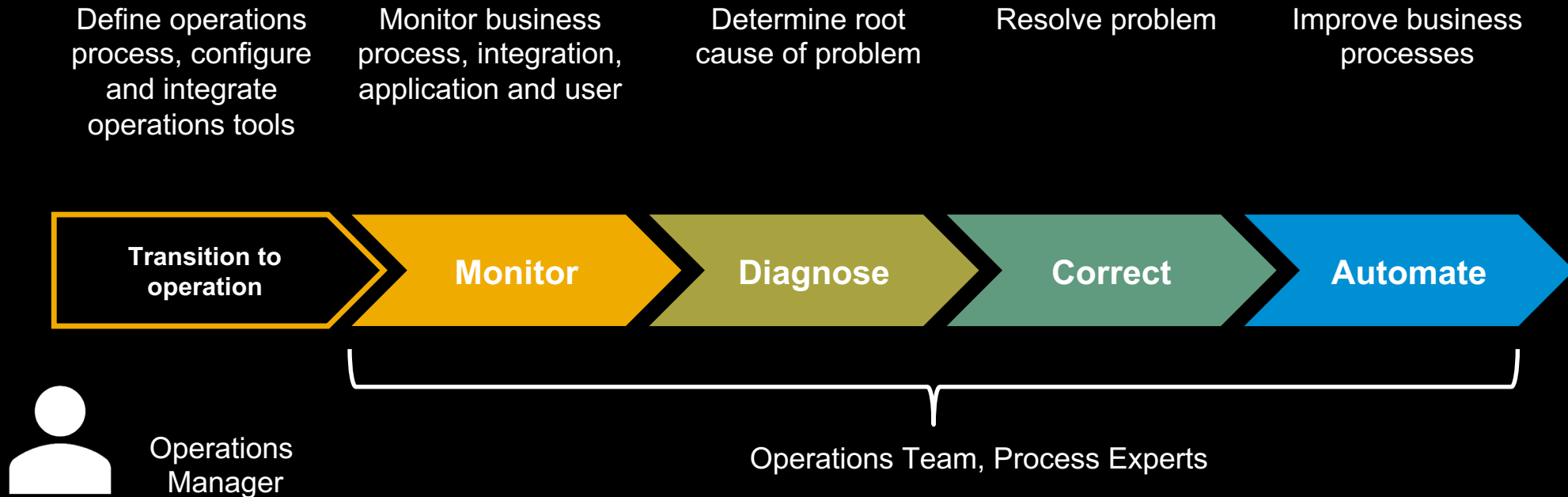
Cloud ALM for Implementation is a **key companion in your transition to the cloud.**



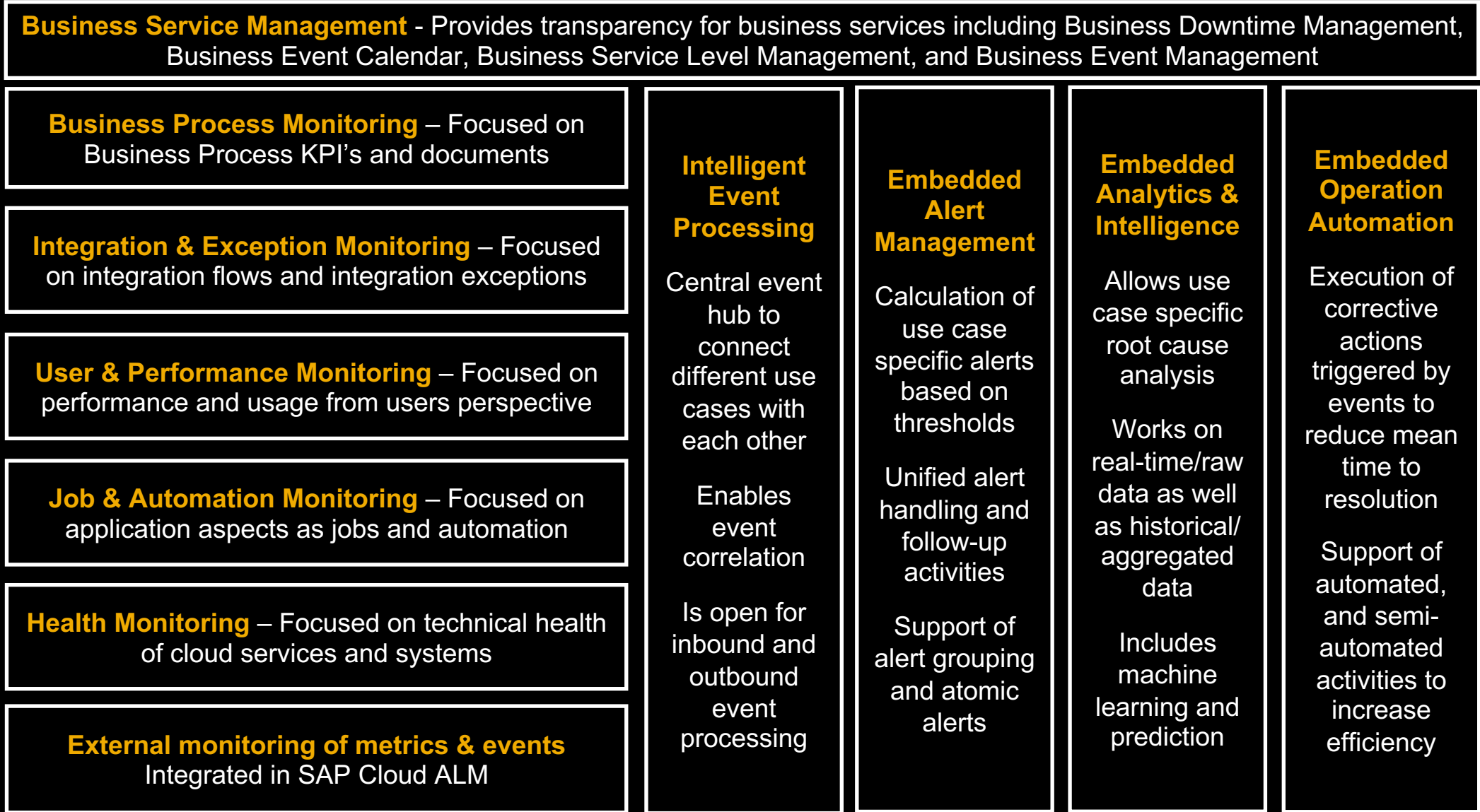
Intelligent Enterprise

# SAP Cloud ALM

Standardized and automated Operations of the Intelligent Enterprise



# SAP Cloud ALM for Operations – Available & planned scope in detail



**External Analytics & Intelligence \***



**Incident Management \***



**Collaboration Management \***



**External Automation Management**

# Did you know how to ...

## Identify and correct message flows and integration-related exceptions?

### Integration & Exception Monitoring:

- Supports efficient problem resolution process and collaboration between business and IT:
  - Visualizes the current [integration status](#)
  - Identifies problems
  - Alerts responsible persons in business and IT
  - Analyzes identified critical issues
  - Triggers corrective activities

The image displays three overlapping screenshots of the SAP Integration & Exception Monitoring (IEM) interface. The top screenshot shows a 'Monitoring' dashboard with a grid of service tiles. One tile, 'etx-200.wdf.sap.corp SAP S/4HANA Cloud', is highlighted with a red border. The middle screenshot shows a message flow diagram with three nodes: 'my304437.s4hana.ondemand.com', 'CPI\_v0401', and 'C4C\_VPR\_057'. Each node displays 'Duration' and 'Messages' (e.g., 1 Sec, 1 Message). The bottom screenshot shows the 'Alerting' section with a list of alerts and a detailed view of an 'Erroneous Messages(AIF) Detected' alert. The alert details include object information and a table of 'OPERATION AUTOMATION LOGS' with columns for Status, Status Details, and ID.

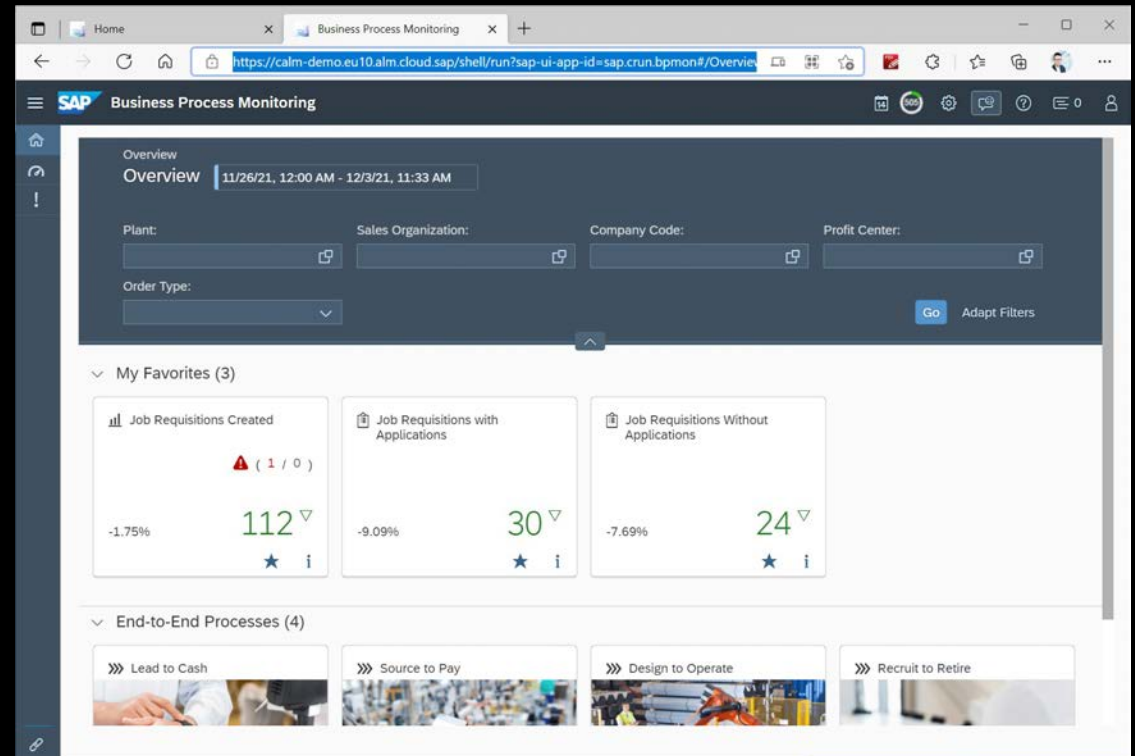
Learn more about SAP Cloud ALM  
[Integration & Exception Monitoring!](#)

# Did you know how to ...

## Find and analyze anomalies during business process execution?

### Business Process Monitoring:

- Monitors processes health and detects anomalies during process execution, including drill-down into business documents
- Alerts users directly on process disruptions, including automated problem resolution
- Utilizes pre-defined process content, including auto-discovery of relevant [business process KPIs](#) to be switched on



Learn more about SAP Cloud ALM  
[Business Process Monitoring](#)

# Did you know how to monitor ...

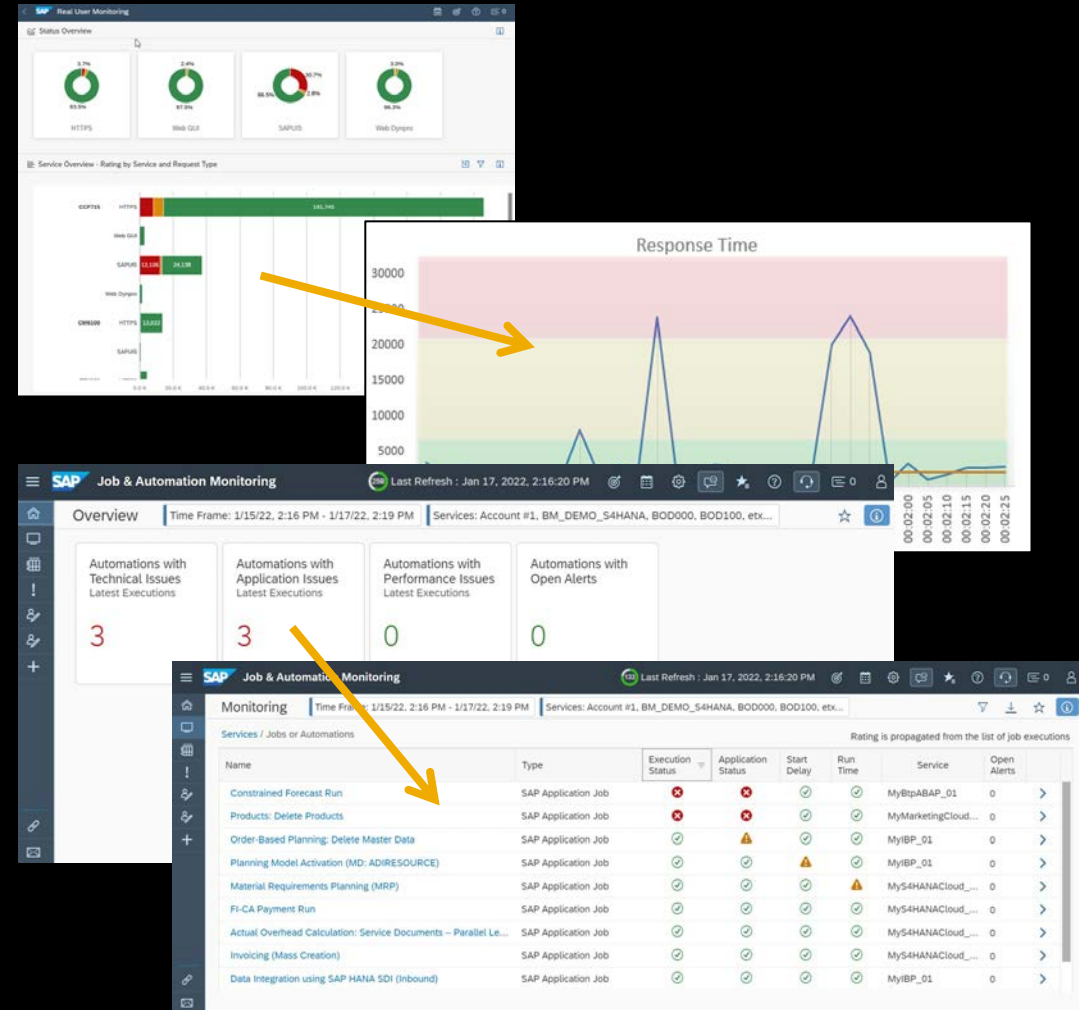
## Performance and job execution of processes, such as SAP SuccessFactors Employee Central Payroll?

### Real User Monitoring in SAP Cloud ALM:

- Provides transparency regarding performance as experienced by end users as well as utilization of business functionality
- Correlates performance data measured at frontend, cloud service, and/or system side

### Job Monitoring in SAP Cloud ALM:

- Ensures efficient job and automated task execution by monitoring job/task executions health and detection of anomalies





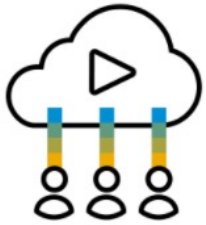

Learn more about [Real User Monitoring](#) and [Job Monitoring](#) for SuccessFactors Employee Central Payroll

# Demo Time!



## SAP Cloud ALM

Application Lifecycle Management (ALM) for cloud-centric customers

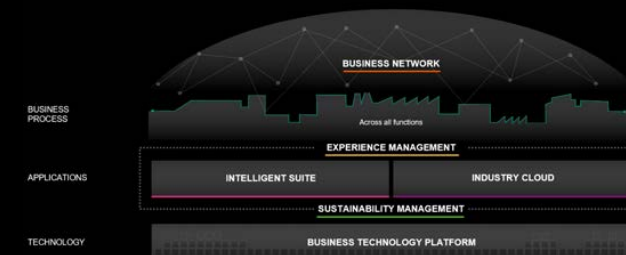
			
<p>Get the idea</p> <p>to understand the value of SAP Cloud ALM for your business.</p> <p><a href="#">Learn</a></p>	<p>Watch recorded demos</p> <p>to learn about the capabilities of SAP Cloud ALM.</p> <p><a href="#">Watch</a></p>	<p>Try it out now</p> <p>to explore the simplified ALM experience.</p> <p><a href="#">Explore</a></p>	<p>Start using it</p> <p>to get the full benefits of SAP Cloud ALM.</p> <p><a href="#">Request</a></p>

<https://support.sap.com/cloud-alm>

# SAP Cloud ALM for operations

Ensure business continuity by monitoring and alerting - Increase operation efficiency by automating operational tasks - Avoid anomalies by proactive problem prediction

- SAP Cloud ALM empowers customers to **understand healthiness of SAP business solutions**:
  - ✓ Provides **full stack monitoring and alerting** covering business processes, integration, users, applications, and healthiness of cloud services and systems
  - ✓ Allows to conduct **root cause analysis** on different levels
  - ✓ Acts as **collaboration platform between LOB and IT**
- SAP Cloud ALM enables customer to increase operation efficiency by **automating corrective actions**
- SAP Cloud ALM helps to **predict anomalies in business process and application operation** by event correlation and learning out of the collected data (AIOPs)
- SAP Cloud ALM provides **transparency regarding availability of business services** including business downtimes, business events and business SLA's



Intelligent Enterprise



A Collaboration of  and 

# SAP Enterprise Architect Global Summit

Virtual Event - March 1-3, 2022

## How to get SAP Cloud ALM

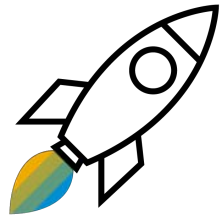


# SAP Cloud ALM – How to get started?



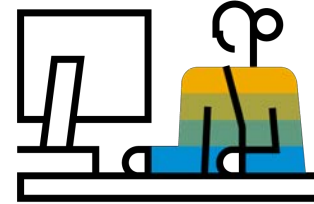
## Familiarize Yourself

Browse presentations, watch recorded demos, and access the public demo system via the SAP Cloud ALM home page.



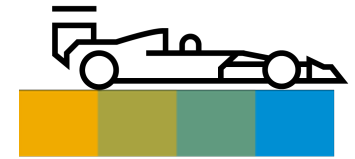
## Request SAP Cloud ALM

Place a request directly through your SAP Support Launchpad. Admins are automatically authorized to request SAP Cloud ALM.



## Set up Your Tenant

Your SAP Cloud ALM tenant is usually available within 15min  
Just do a few set-up steps.



## Onboard the Team

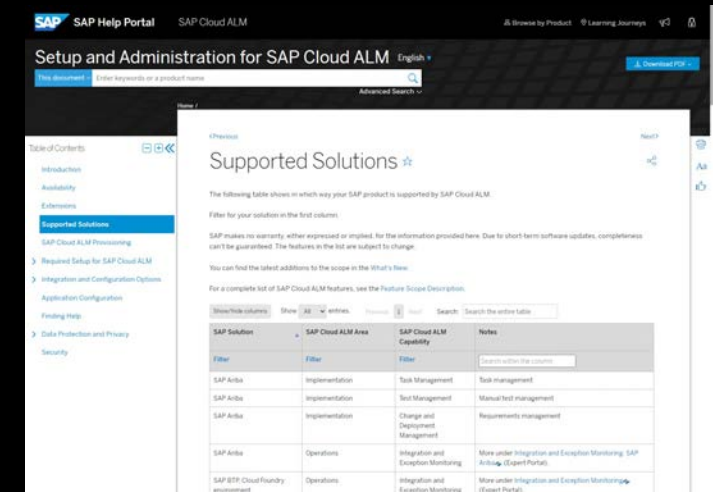
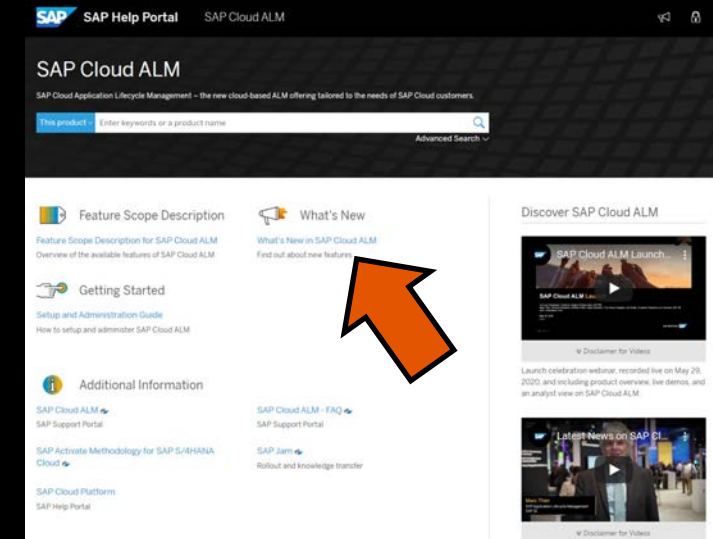
Invite your SAP Cloud ALM Users.

# General guidance: Does SAP Cloud ALM fit your needs?

SAP Cloud ALM is continuously enhanced. Therefore it is recommended to regularly check the “**What’s new in SAP Cloud ALM**” section in the [SAP Help Portal](#).

This helps you to decide if SAP Cloud ALM fulfills your needs and expectations from a functional point of view, and if moving to SAP Cloud ALM should be considered.

Additionally, in the “[Supported Solutions](#)” section you can find an always up-to-date list which SAP solutions are supported by SAP Cloud ALM.



# SAP Cloud ALM **openSAP** courses

[Enroll now!](#)


Join these free, online courses to learn how SAP Cloud ALM helps customers to implement and operate SAP cloud solutions



## Operating Cloud-Centric Solutions with SAP Cloud ALM

Janko Budzisch, Andrea Schuhmann, Simon...

 Self-paced

 English


Join this free online course to learn about SAP Cloud ALM for operations and its features, functions, and processes for operating your...



## Accelerate Cloud Implementations with SAP Cloud ALM

Michael Klöffer, Jagmohan S Chawla, Moritz...

 Self-paced

 English

Join this free online course to learn about SAP Cloud ALM and how it can help you with the implementation of cloud solutions from SAP....



## SAP Cloud ALM in a Nutshell

Tonja Kehrer

 Self-paced

 English

 German, French, Spanish

Join this free online course to learn about SAP Cloud ALM, a new tool to guide you successfully through the implementation and...

# SAP Enterprise Architect Global Summit

Virtual Event - March 1-3, 2022

## THANK YOU

John Krakowski Jr.

[john.krakowsk.jr@sap.com](mailto:john.krakowsk.jr@sap.com)

Evan Stoddard

[evan.stoddard@sap.com](mailto:evan.stoddard@sap.com)



**SAP**insider

A Collaboration of  and 

# SAP Enterprise Architect Global Summit

Virtual Event - March 1-3, 2022

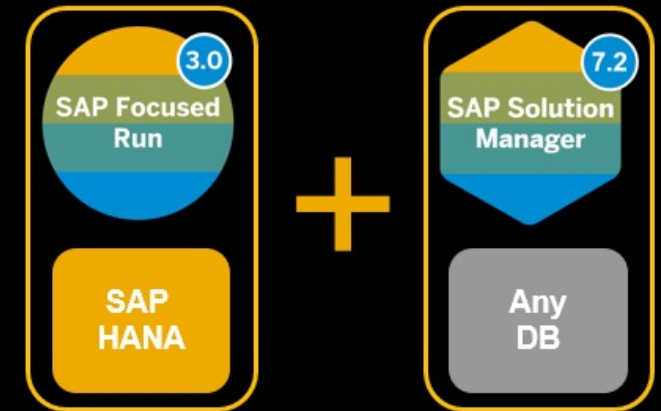
## SAP Focused Run



# SAP Focused Run – Mission statement

- Is a **powerful solution for customers & partners** to operate their solution **centralized and highly automated with minimal TCO impact**
- **Addresses advanced customer needs** in scalability, data volumes, security, automation, openness, dashboarding & artificial intelligence
- Uses the **full power of SAP HANA as a platform**, including replication, partitioning, predictive analytics, and compression
- Is a **separate installation**, which can run **side-by-side with an existing SAP Solution Manager**
- Provides feature rich and powerful **functionality dedicated to operations of IT solutions**
- Isn't covered by maintenance fee, but **needs to be licensed separately from SAP**

SAP Focused Run and SAP Solution Manager can run **side-by-side**



# SAP Focused Run – Functional Scope

**Advanced  
Event & Alert  
Management  
(AEM)**

**Advanced  
System  
Management  
(ASM)**

**Advanced  
User  
Monitoring  
(AUM)**

**Advanced  
Integration  
Monitoring  
(AIM)**

**Advanced  
Configuration  
Monitoring  
(ACM)**

**Advanced  
Root Cause  
Analysis  
(ARA)**

**Advanced  
Analytics &  
Intelligence  
(AAI)**

## **SAP Focused Run - Application Foundation**

**Landscape Management Database**

**Simple Diagnostic Agent & SAP Host Agent**

**Monitoring & Alerting Infrastructure**

**Expert Scheduling Framework**

**Simple System Integration**

**Guided Procedure Framework**

**SAP HANA + SAP NetWeaver ABAP + SAPUI5 as Technology Foundation**



# How to get and implement SAP Focused Run?

<https://support.sap.com/focused-run>  
Contact us: FocusedRun@sap.com

## SAP Focused Run Positioning Workshop

- As result of the workshop, SAP will provide a project proposal including Hardware sizing, License sizing, and possible consulting package
- Customers & Partners get full transparency regarding the boundary conditions for the SAP Focused Run implementation project

## Buy the SAP Focused Run license

The software is sold via SAP Global Price List by SAP Sales Organization. Customer individual discounts can be applied.

## SAP Focused Run Project Setup & Architecture Workshop

- Download the appropriate software package from the SAP Support Portal
- As a jumpstart the SAP Focused Run Project Setup & Architecture Workshop should be conducted

A Collaboration of  and 

# SAP Enterprise Architect Global Summit

Virtual Event - March 1-3, 2022

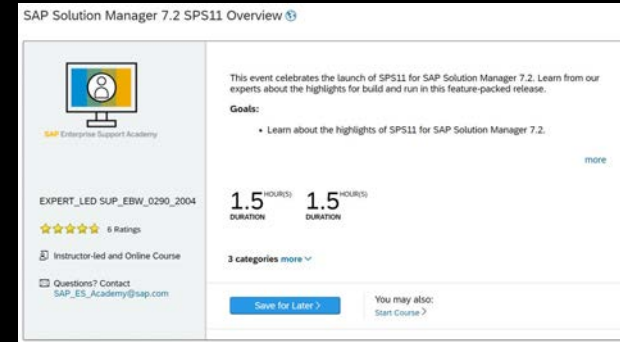
**Key links**



# Stay in touch with ALM

## Want to learn more?

Join our regular “What’s new” webinars on the SAP Learning Hub!



SAP Solution Manager 7.2 SPS11 Overview

This event celebrates the launch of SPS11 for SAP Solution Manager 7.2. Learn from our experts about the highlights for build and run in this feature-packed release.

**Goals:**

- Learn about the highlights of SPS11 for SAP Solution Manager 7.2.

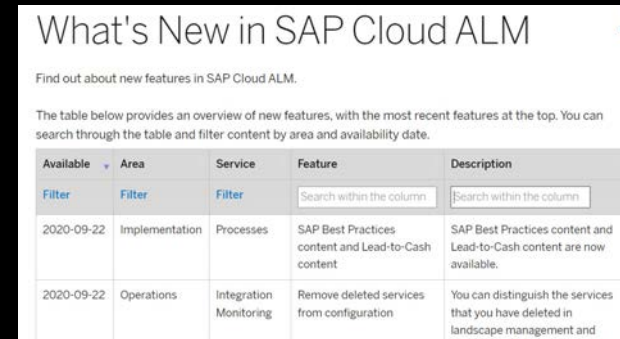
1.5 HOURS DURATION | 1.5 HOURS DURATION

3 categories more

Save for Later | You may also: Start Course

## Want to stay current?

See the “What’s New” section in the help portal!



What's New in SAP Cloud ALM

Find out about new features in SAP Cloud ALM.

The table below provides an overview of new features, with the most recent features at the top. You can search through the table and filter content by area and availability date.

Available	Area	Service	Feature	Description
Filter	Filter	Filter	Search within the column	Search within the column
2020-09-22	Implementation	Processes	SAP Best Practices content and Lead-to-Cash content	SAP Best Practices content and Lead-to-Cash content are now available.
2020-09-22	Operations	Integration Monitoring	Remove deleted services from configuration	You can distinguish the services that you have deleted in landscape management and

## Want to stay up-to-date?

Join our monthly [ALM Community Call](#) and our [SAP Cloud ALM Expert Community Call](#)



**SAP Cloud ALM Expert Community Call**

Join us every month to interact with experts and your peers as they share news, lessons learned and best practices about SAP Cloud ALM for implementation and operations.

**Application Lifecycle Management Community Call**

The free monthly webinar provides everything you need to know about SAP's Application Lifecycle Management (ALM) offerings. Get the latest news directly from SAP's topic experts!

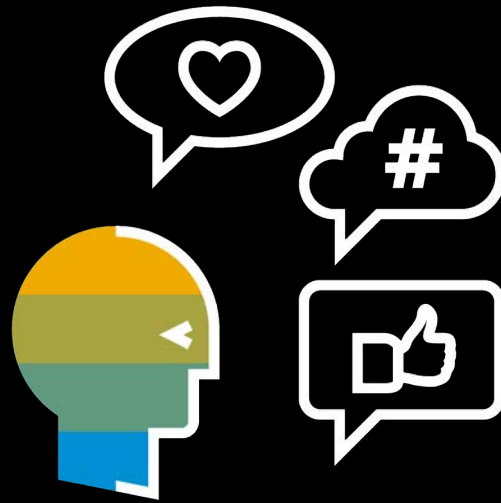
# Learn more about SAP Cloud ALM!

SAP Cloud ALM Report

SAP Cloud ALM Webinars

ALM Community Call

#CloudALM



<https://support.sap.com/cloud-alm>

# SAP Enterprise Architect Global Summit

Virtual Event - March 1-3, 2022

**THANK YOU!**

**Evan Stoddard & John Krakowski**

**SAP**

[evan.stoddard@sap.com](mailto:evan.stoddard@sap.com) / [john.krakowski.jr@sap.com](mailto:john.krakowski.jr@sap.com)

**SAP**insider

