

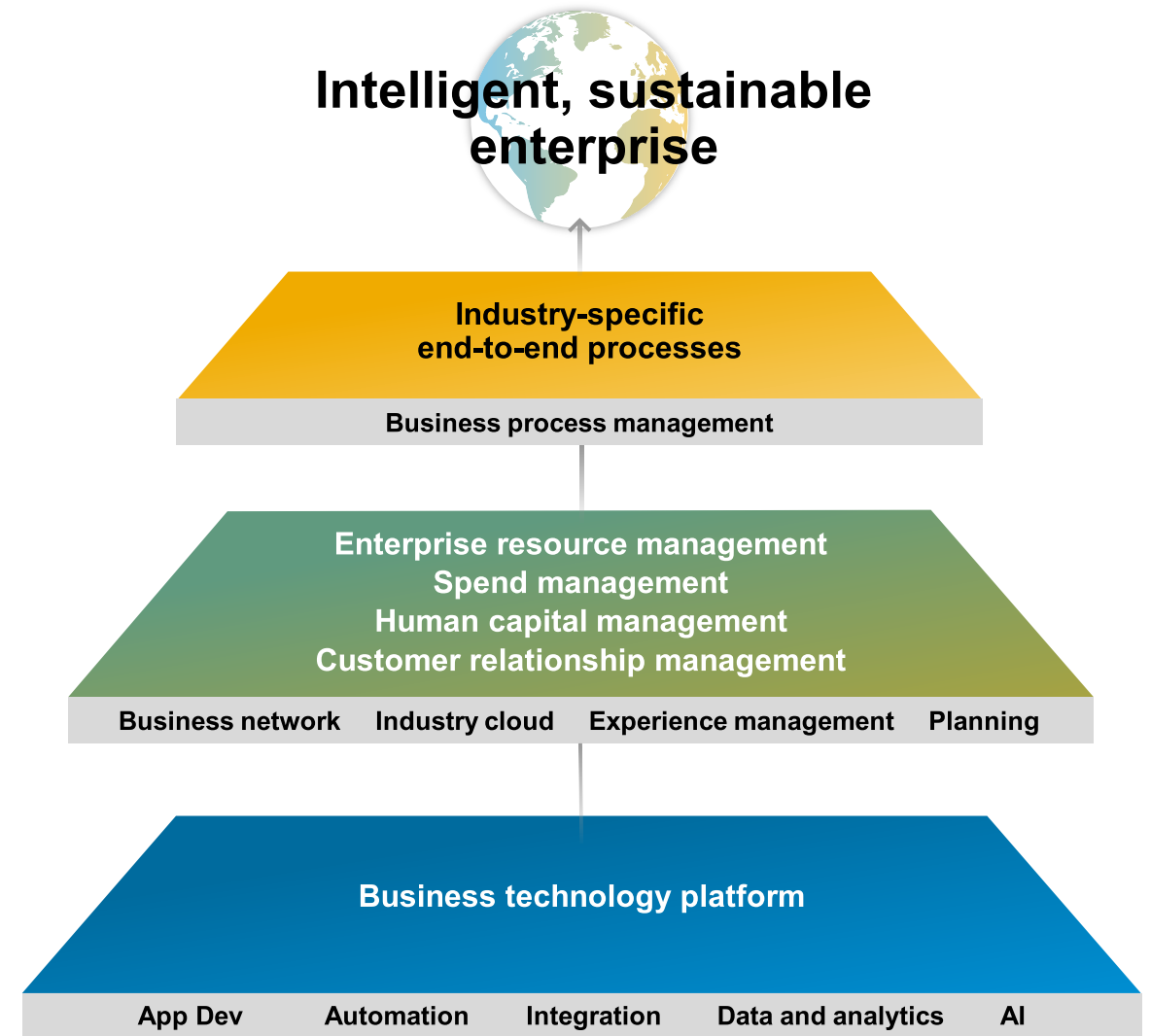
SAP Business Technology Platform – Unpacking the B and the T

John Gibson
Global Head, SAP Business
Technology Platform COE

March 2022

PUBLIC

Enable every enterprise to become an **intelligent, sustainable enterprise**



Before

Complex Data Architecture

Deep Data Science

New Solutions

Now

Data Architecture for a reason

3 layers of SAP Data Science

Continuous Innovation

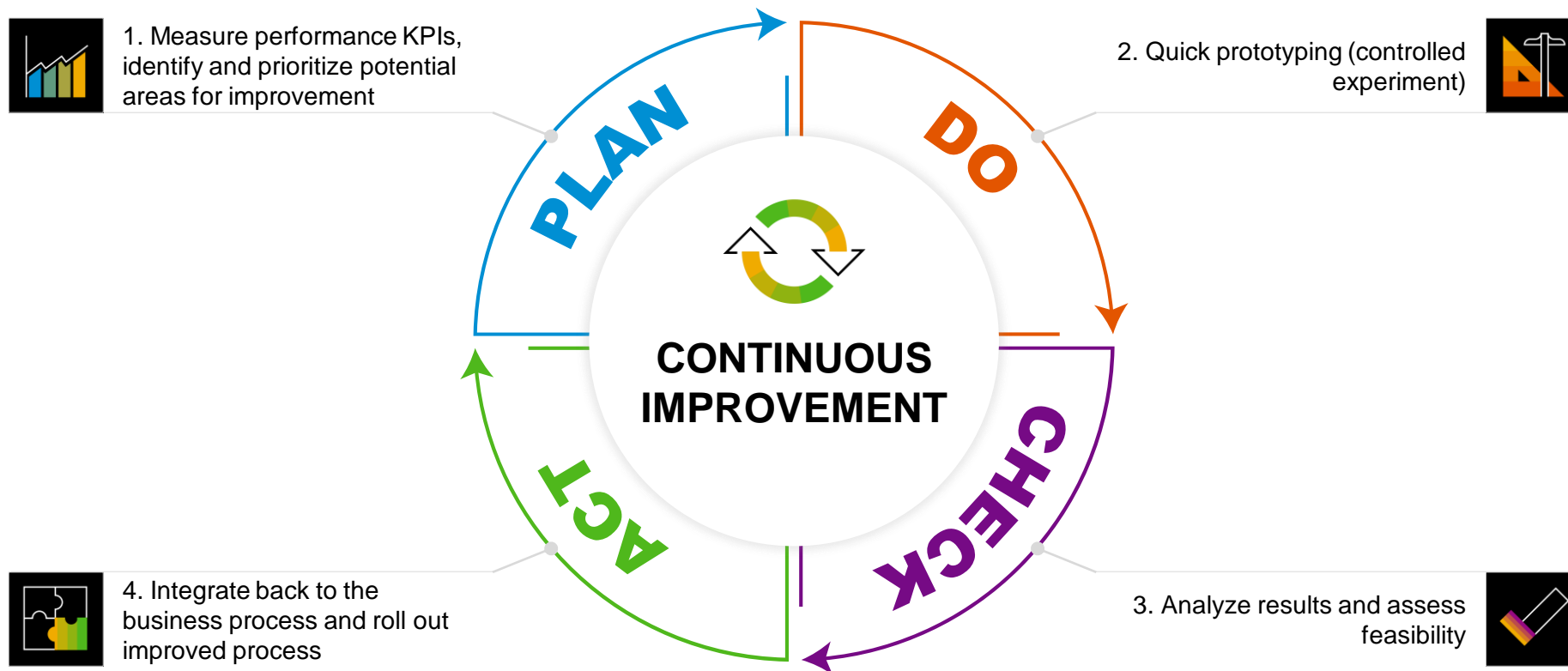
Blending of Apps and Platform

Industry specific Technology solutions

Continuous Process Improvement & SAP

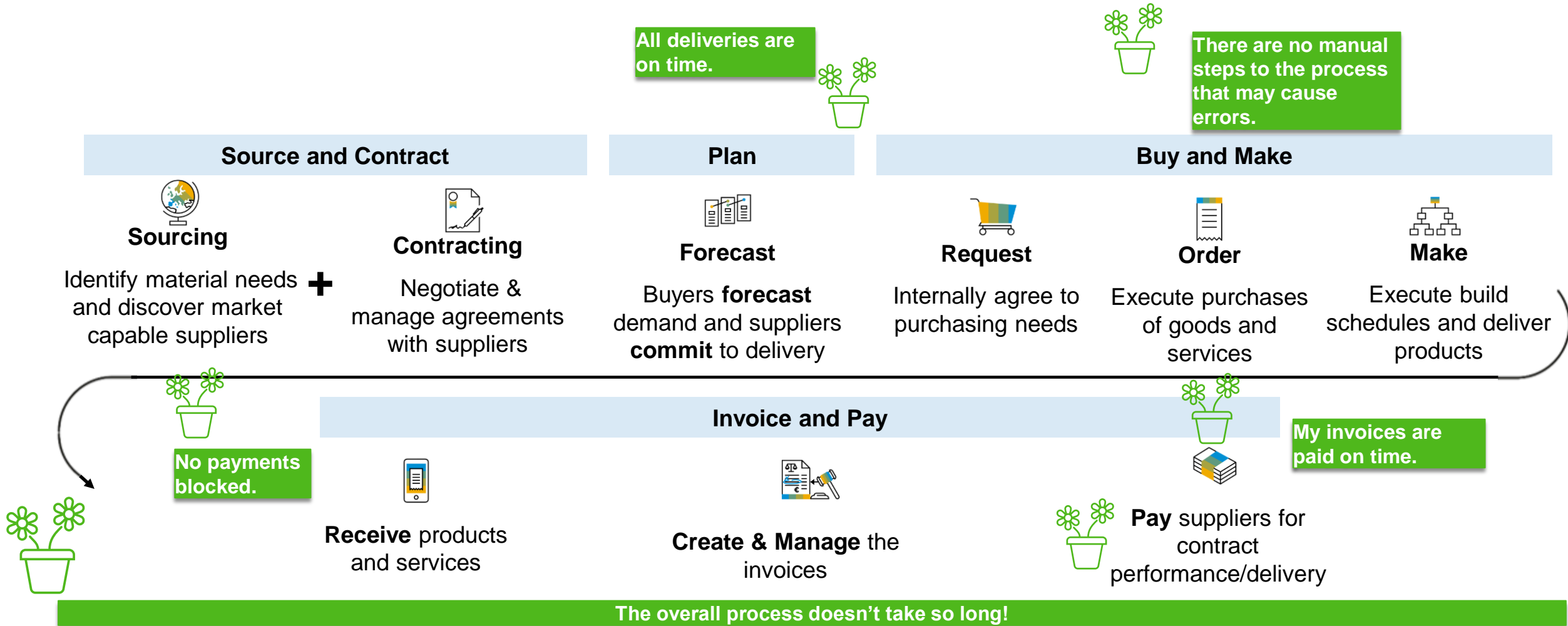
Deming's (PDCA) Cycle* in the Digital Era

The PDCA Cycle in **Process Excellence**



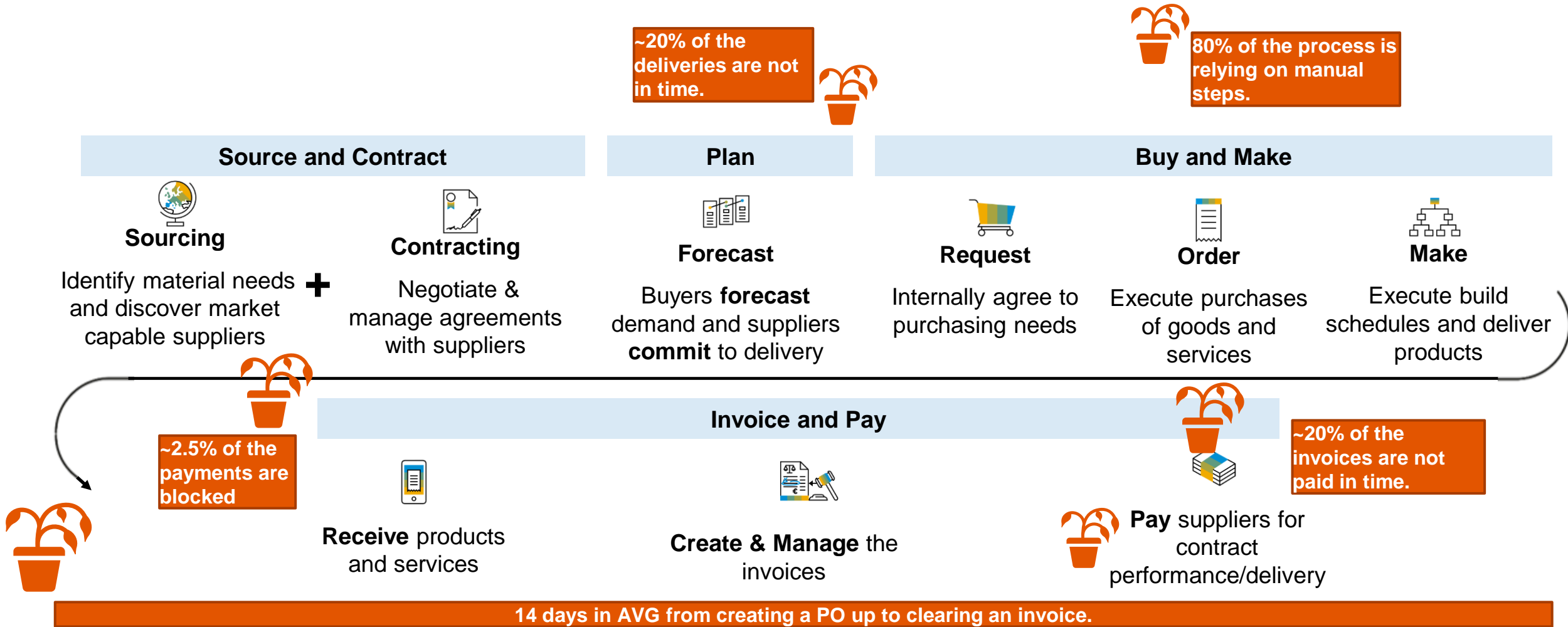
*<https://en.wikipedia.org/wiki/PDCA>


SOURCE TO PAY PROCESS – operates according to initial standards



 : Your Purchase to Pay Performance KPIs

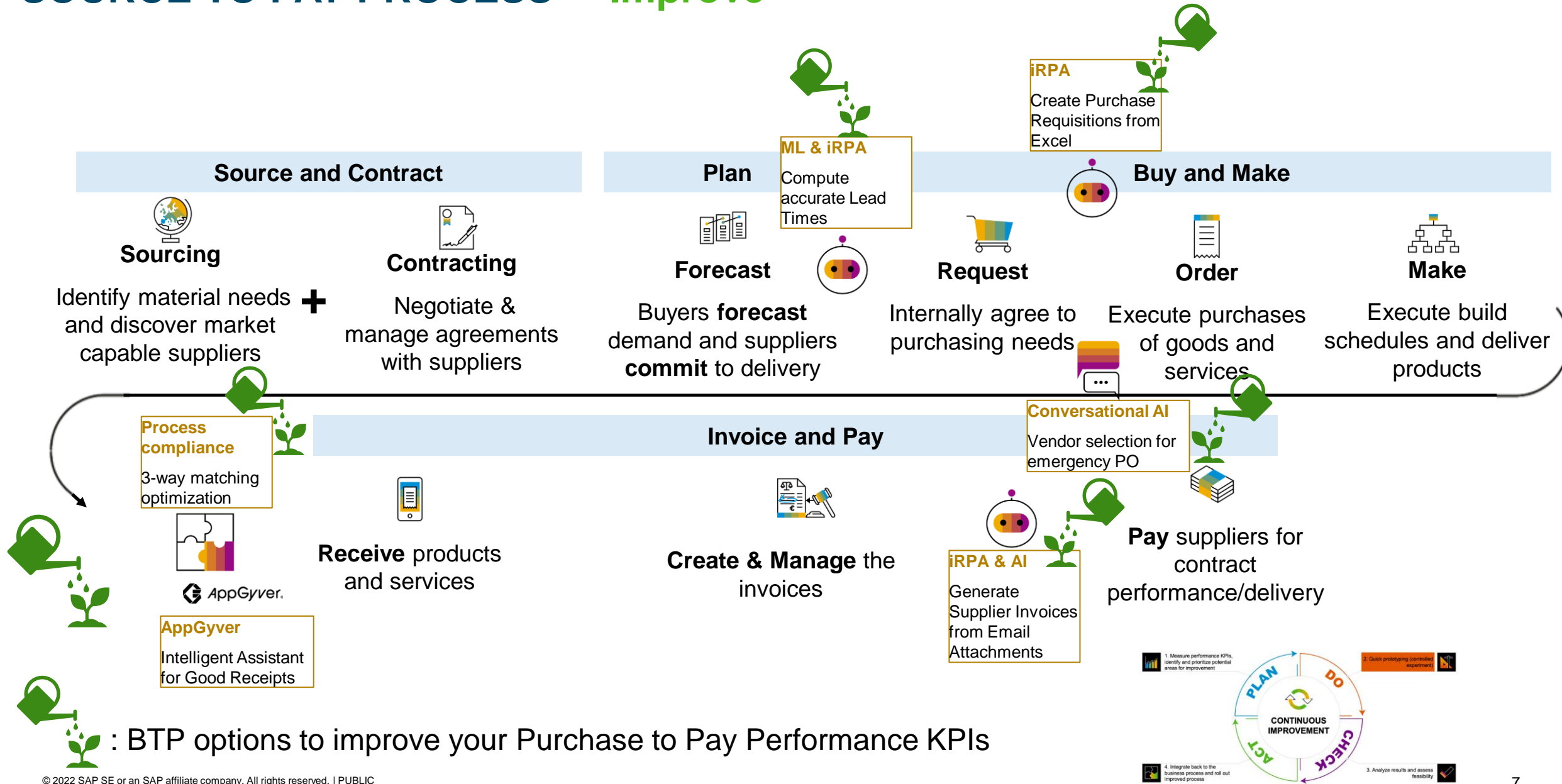
SOURCE TO PAY PROCESS – ~~operates according to initial standards~~ not really



 : Your Actual Purchase to Pay Performance KPIs



SOURCE TO PAY PROCESS – Improve



: BTP options to improve your Purchase to Pay Performance KPIs

Continuous Process Improvement Workshop



What is it?

2.5 hrs use case driven workshop on business process modeling and optimization

Interactive discovery of relevant use cases and next steps

Recommended attendees:

- Business & Data Analysts
- Process owners
- Innovation teams



What is in the agenda?

1. SAP vision and tools in Process Improvement
2. Expert driven demos (E2E Procure to Pay process improvement scenarios)
3. Leverage the **Process Discovery Report** to identify pain point and potential areas for improvement (using Mural)



Why should you attend?

- Learn how a business process can be modeled, mined and optimized
- Interact with experienced, hands-on facilitators
- Identify and prioritize next steps (e.g. Technical workshop, use case deep dive, etc.)
- Post workshop findings consolidation, mapping to tools & architecture and playback

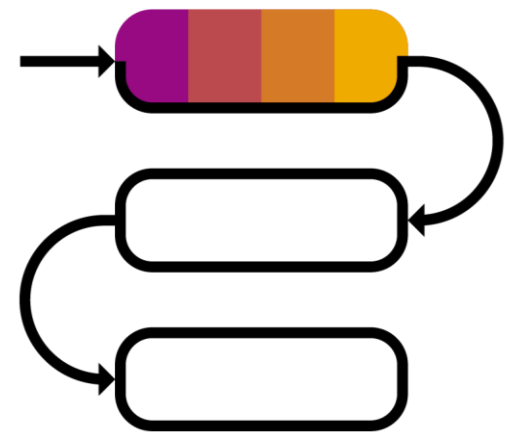


HXM

Extend, Enhance and Elevate HXM with SAP Process Automation

Product Success, SAP Process Automation
February, 2022

PUBLIC

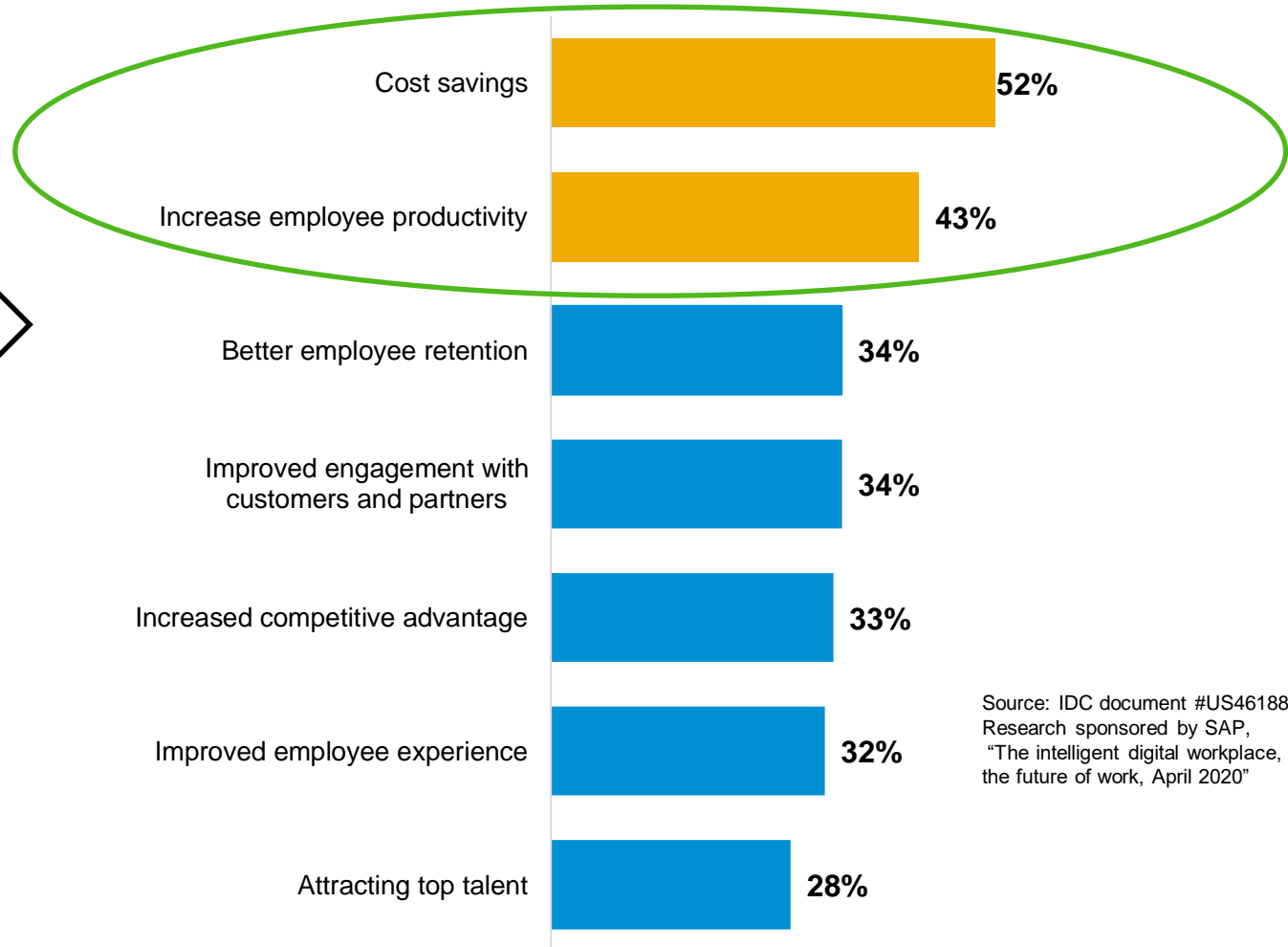
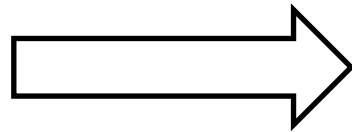


THE BEST RUN



Workforce Transformation

Drivers of Workforce Transformation



Source: IDC document #US46188420BROI, IDC Research sponsored by SAP, "The intelligent digital workplace, leading the way to the future of work, April 2020"

Where Process Automation Adds Value?

Data Collection



Consolidate and manipulate data & documents from multiple data sources, e.g. candidates, employees, vendors, websites, SAP SuccessFactors

High Volume Transactions



Handling process steps multiple times, like copy & paste e.g. data entry, report generation, data migration

Extended “Recruit to Retire” Processes



Digitize the entire journey across multiple applications during process execution e.g. web application, SAP SuccessFactors, SAP S/4HANA and non-SAP systems

Approvals



Dynamic workflows for various processes that help collect necessary approvals, update system of records and manage initiatives & budgets

Simplify New Processes



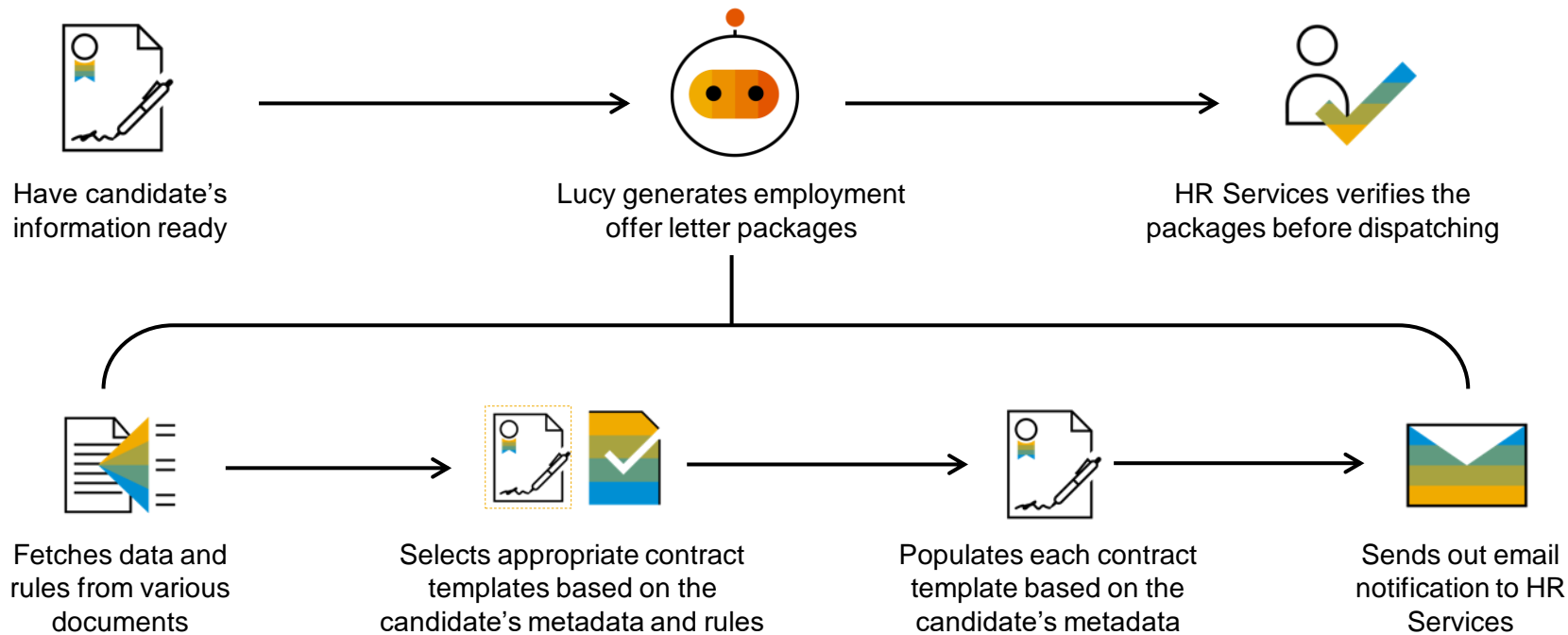
Elevate employee experience by creating new extended digitized processes with seamless integration with SAP SuccessFactors and other applications

Process Visibility



Get visibility of live process journey, time taken at each step & entire process, where are requests, SLAs breached, escalations

Success Story: Offer letter generation



<1 minute taken to generate one package by Lucy

At least **8x** faster as compared to the as-is process



24/7 availability without human supervision

Improved Efficiency
Business process automation with reduced manual steps



High-Quality Output
Eliminating potential human errors



Faster Time-To-Value
Ease of implementation and roll-out



Co-Innovation Leading to Success
SAP's journey towards Intelligent Enterprise



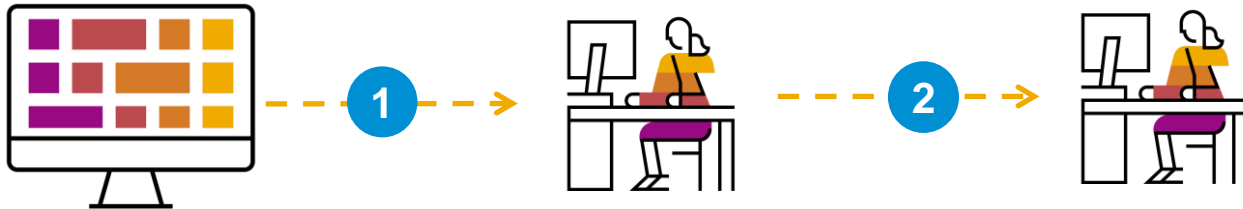
Use Case Example – Employee Payroll Data Update

Before:

Employees updates Payroll Data (variable pay related) on SharePoint.

HR executives manually downloads all the data from SharePoint

HR executive validates data (limits etc.) and manually uploads into the SuccessFactors Employee Central



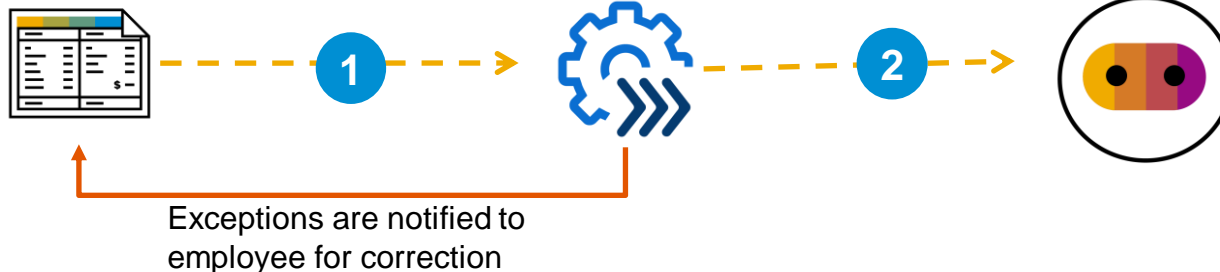
- Manual and tedious task of uploading critical payroll information into the system
- Error prone

After:

Employees fill up form to change Payroll Data (variable pay related) .

Workflow rules validates the data and triggers RPA Robot to upload information

Bot directly uploads information into SuccessFactors Employee Central.

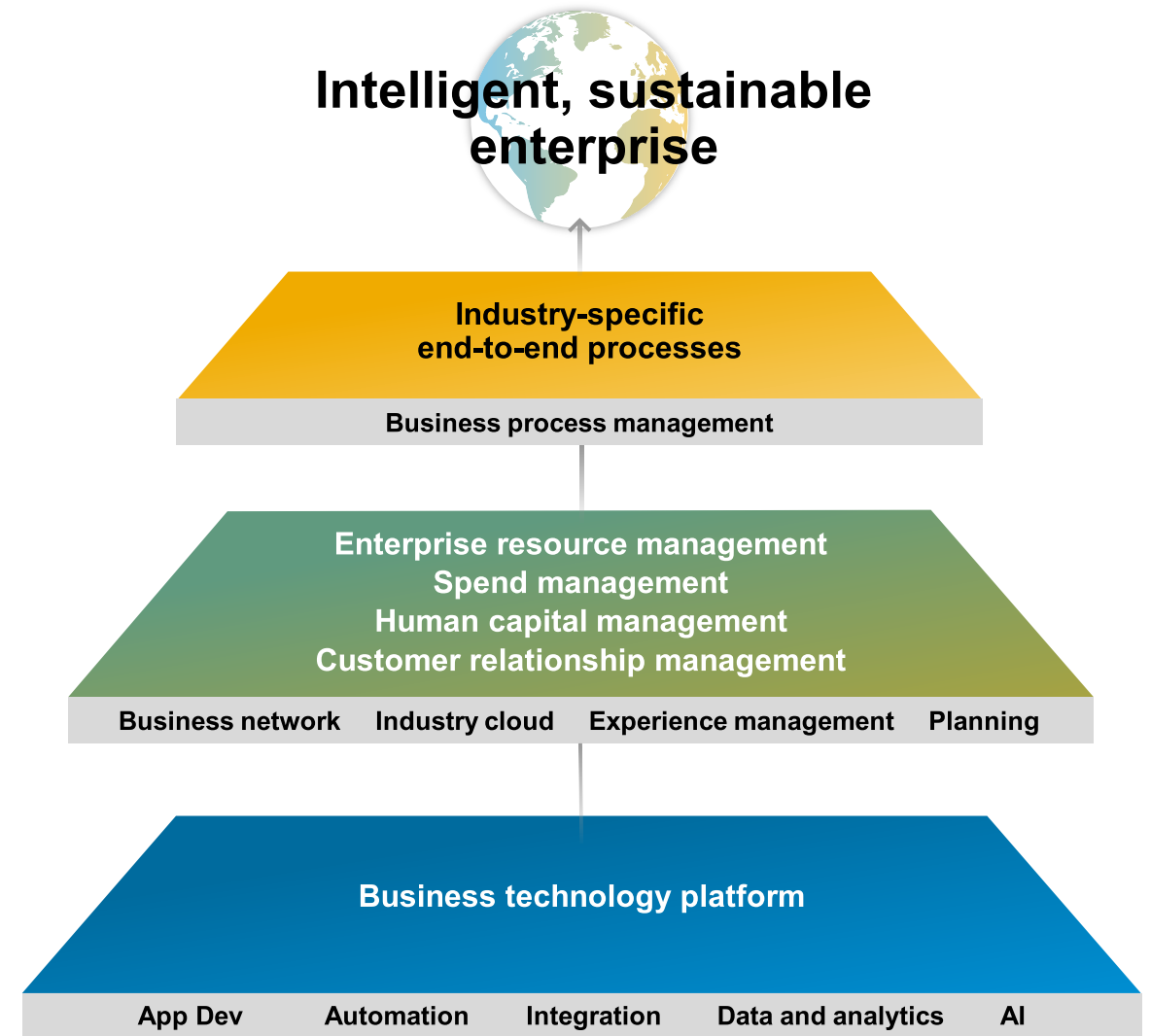


- Automated process with no scope of manual errors
- Payroll Master Data Updated Quickly
- Completely secured and compliance

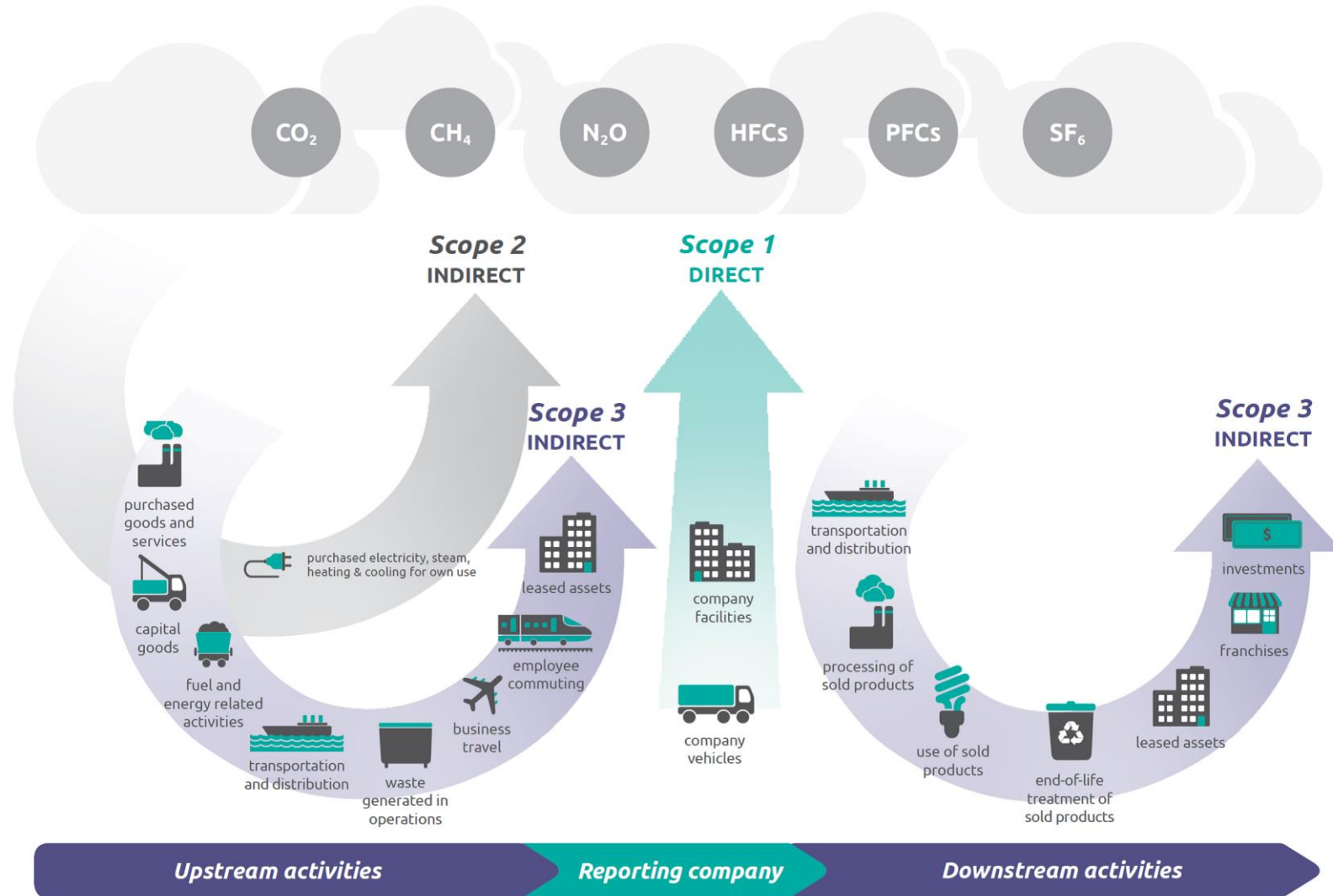


BTP for Sustainability

Enable every enterprise to become an **intelligent, sustainable** enterprise



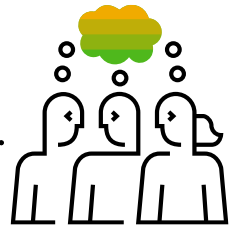
Scope 1, 2, & 3 – GHG Protocol





The Next Steps in Your Sustainability Journey with SAP

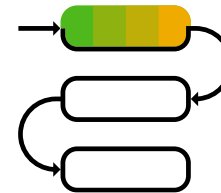
Let's Start!



Sustainability Team

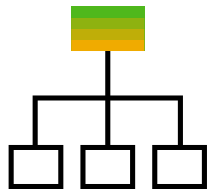
Initiate an **explore session** to define and prioritize the key sustainability areas to be tackled

CPI & DVW

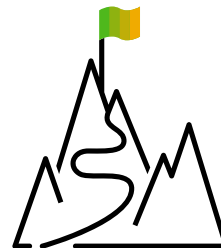


Leverage our **experience and methods** to support data-driven decisions and improve processes

BTP for Sustainability Workshop

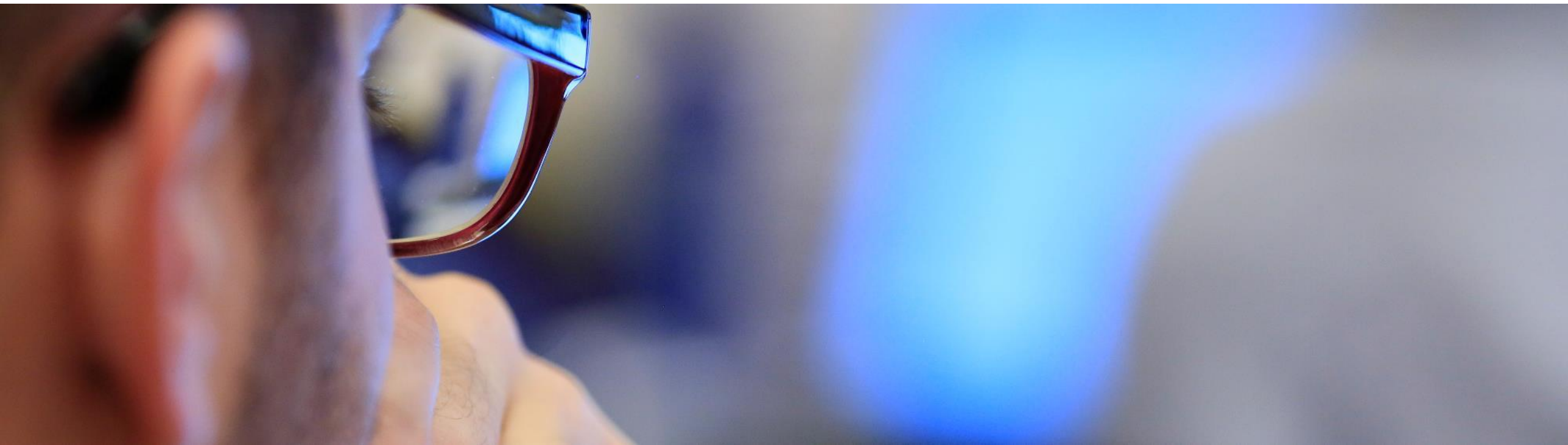


Receive **guidance** on architecture and implementation planning

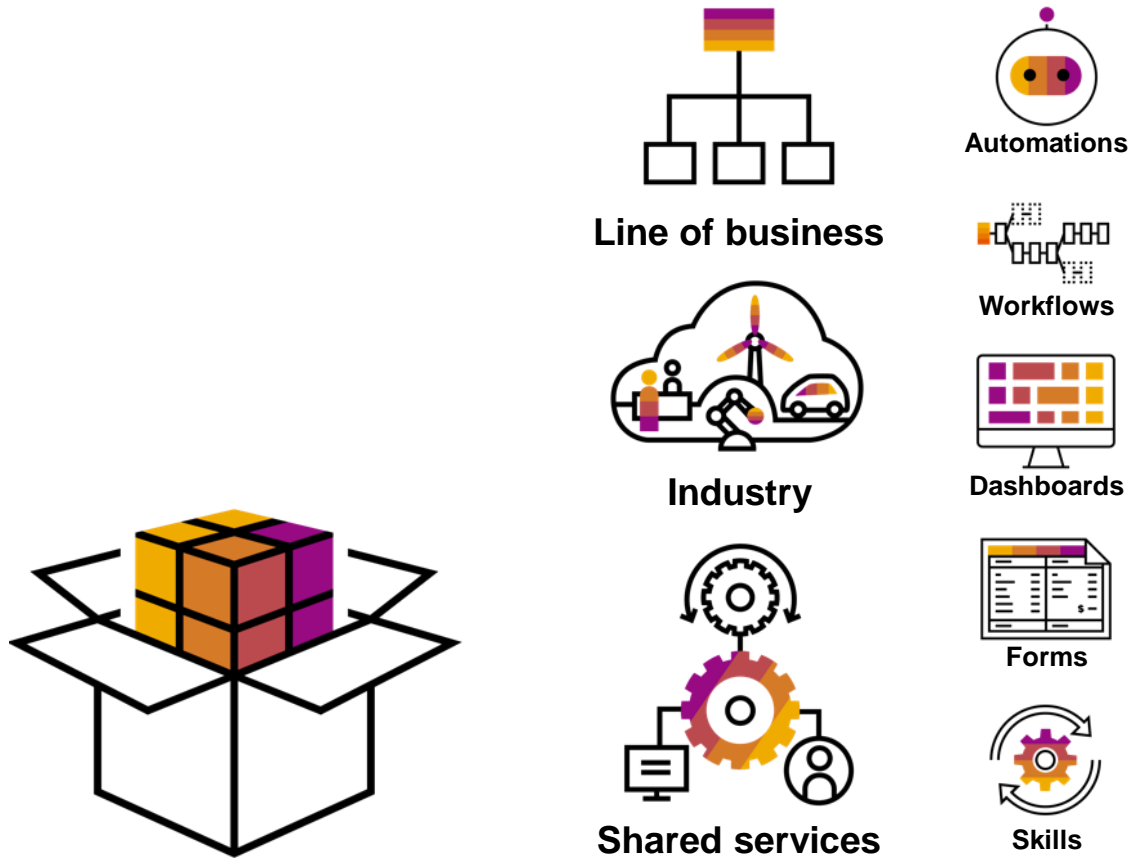


Find a **fast, low-risk, and adoptable pathway** to achieving your sustainability ambitions

Scaling application development and applying 3 levels of Automation or....just being really quick!



Accelerate business transformation with prebuilt content packages



- **Jump-start automation development** while making use of **best practices**
- Select from a wide variety of **prebuilt, directly usable packages**
 - across lines of business
 - industries
 - shared functions
- Content ranges from
 - **templated automations** (bots)
 - **processes** (workflows)
 - **process visibility dashboards**
 - **form** templates
 - **actions** (called skills)to **complete automation packages combining artifacts**

Thank You!

John Gibson

Global Head, SAP Business Technology Platform Centre of Excellence

John.gibson@sap.com

[Linkedin.com/in/johngibsonsap](https://www.linkedin.com/in/johngibsonsap)