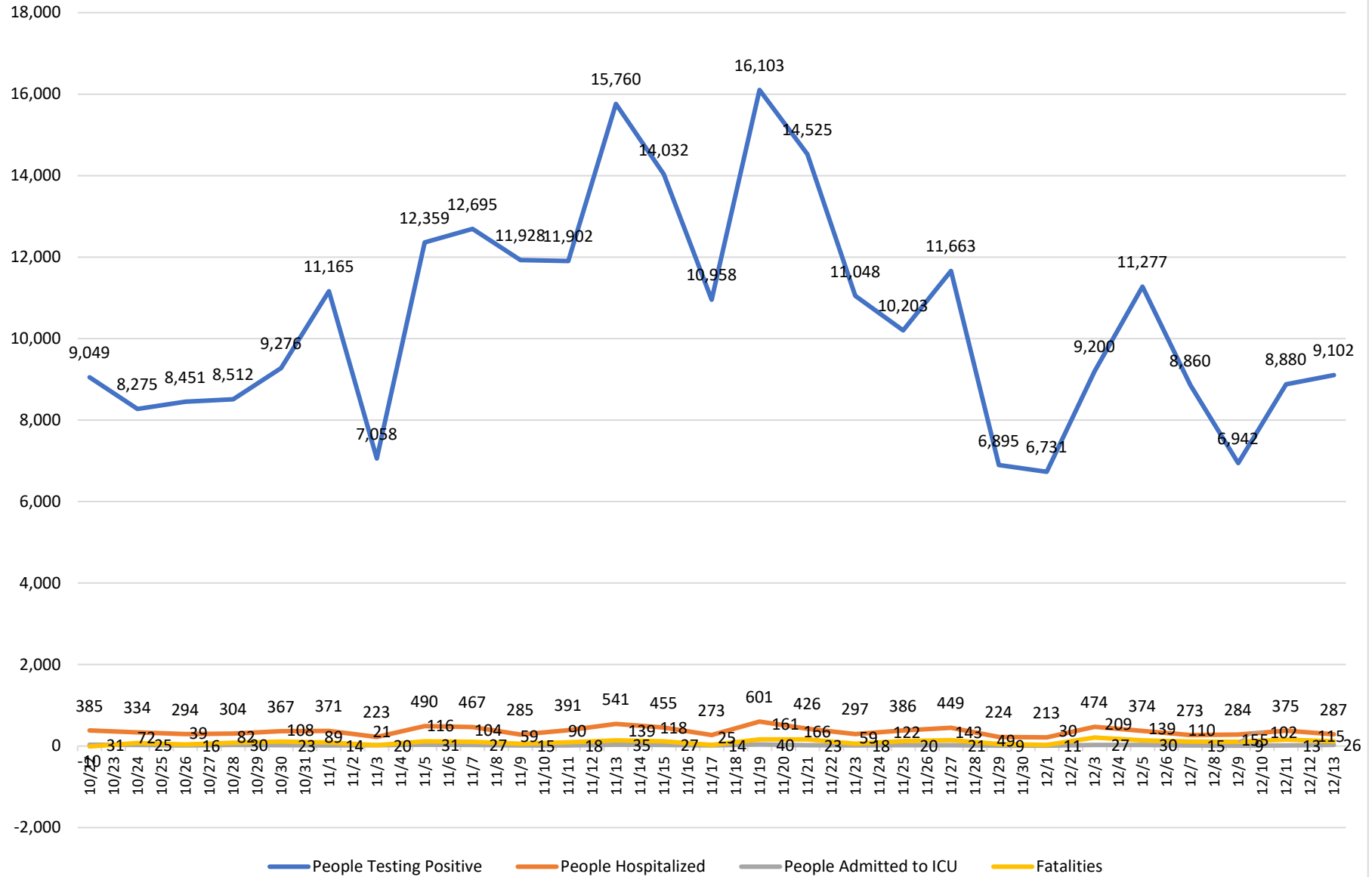


# Net Two-Day Change in Cumulative Numbers - Wisconsin

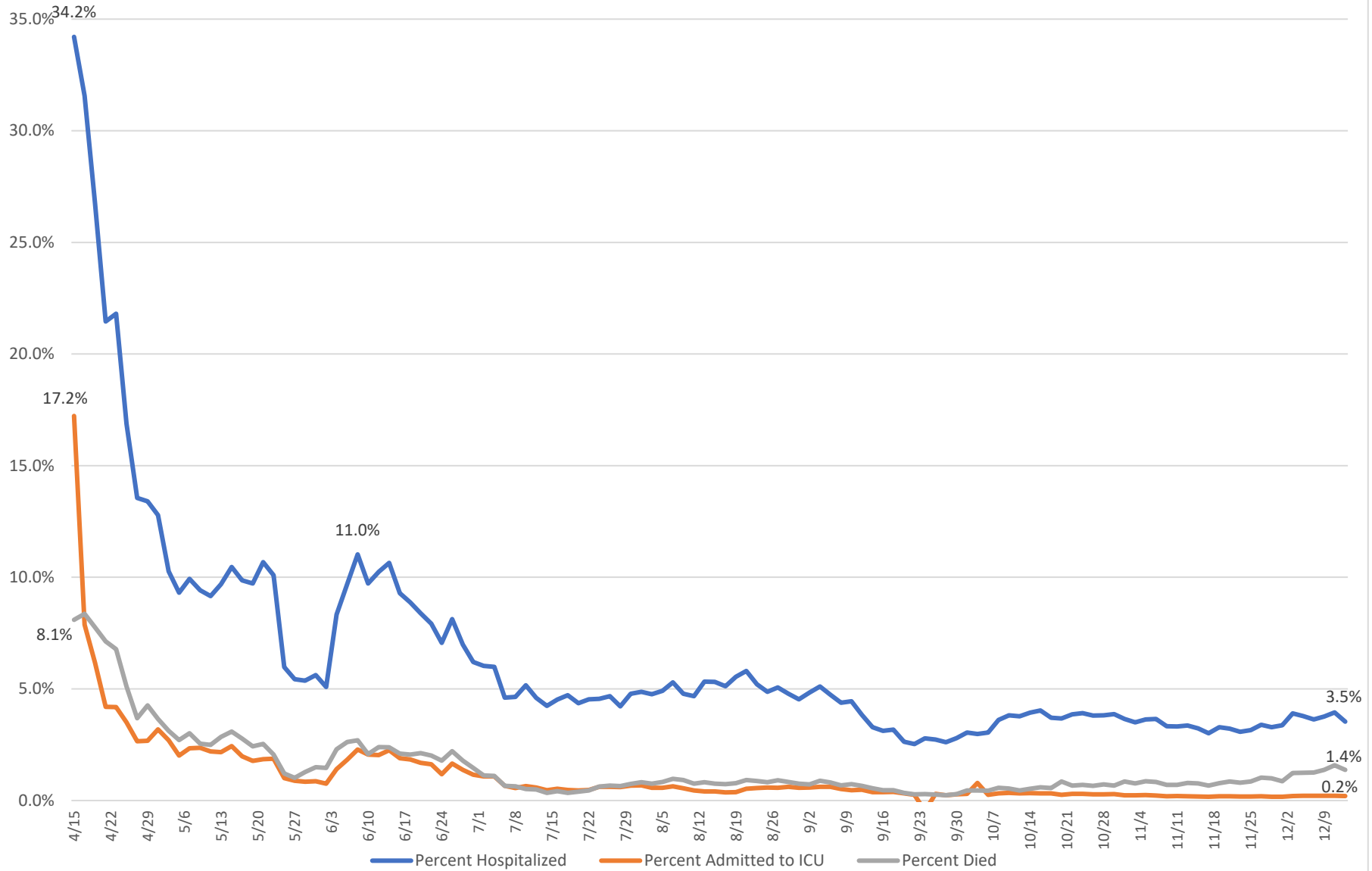
Source: covidtracking.com



# Outcomes for People Who Test Positive in Wisconsin

10-Day Rolling Average

Source: [www.covidtracking.com](http://www.covidtracking.com)

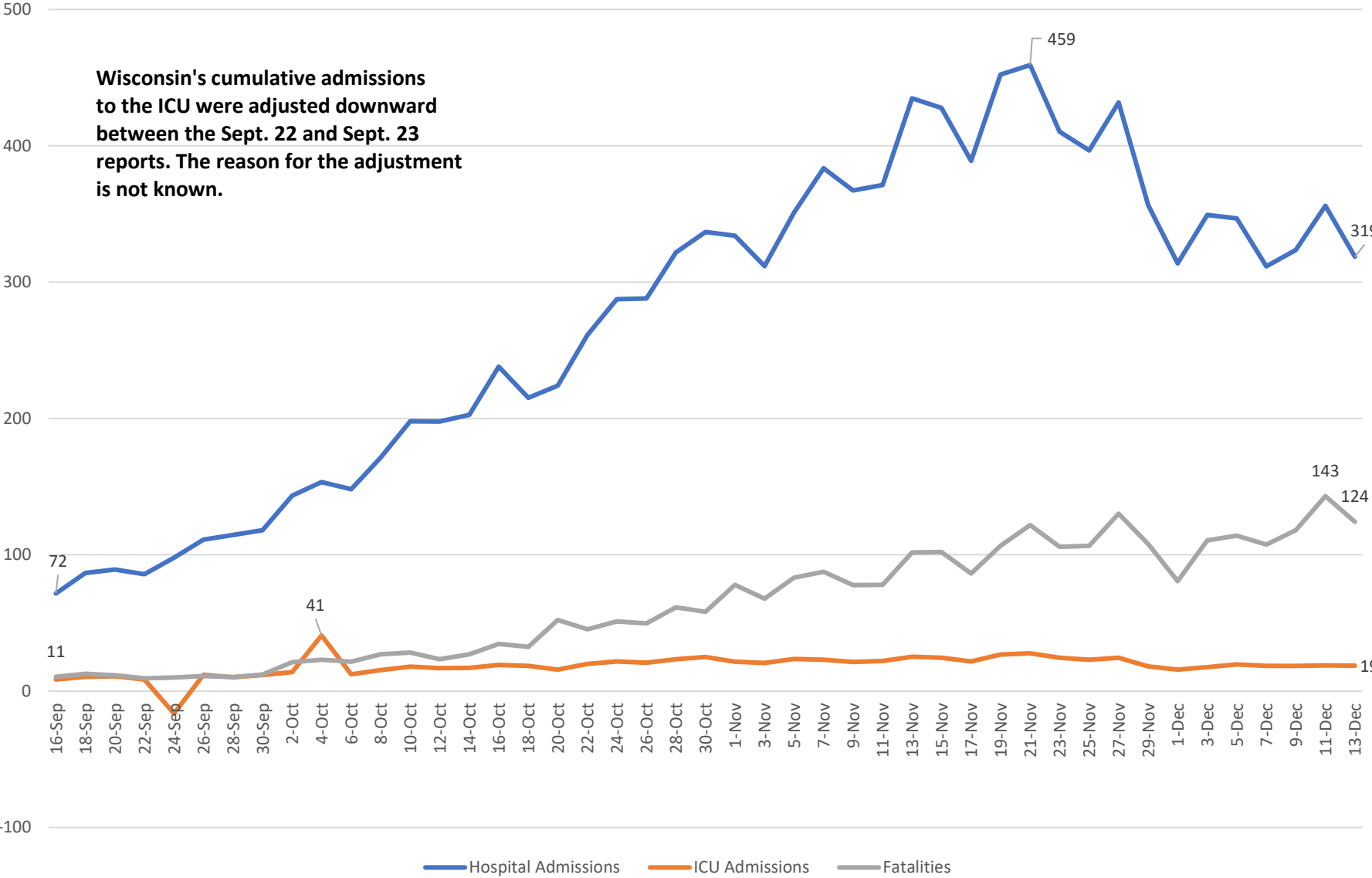


# Hospitalizations, ICU Admissions and Deaths

10-Day Rolling Average

Source: www.covidtracking.com

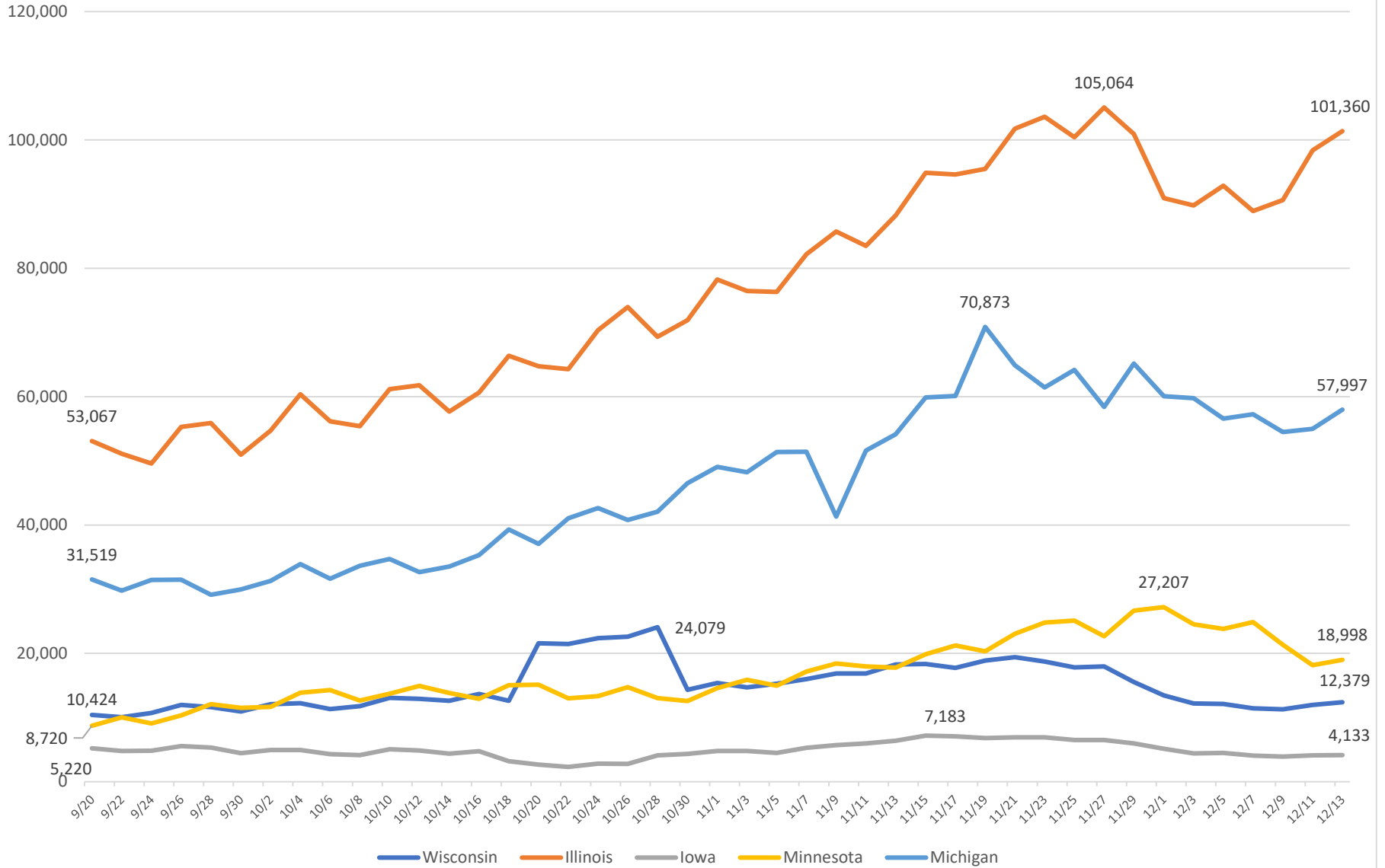
Wisconsin's cumulative admissions to the ICU were adjusted downward between the Sept. 22 and Sept. 23 reports. The reason for the adjustment is not known.



# 2-Day Change in Testing

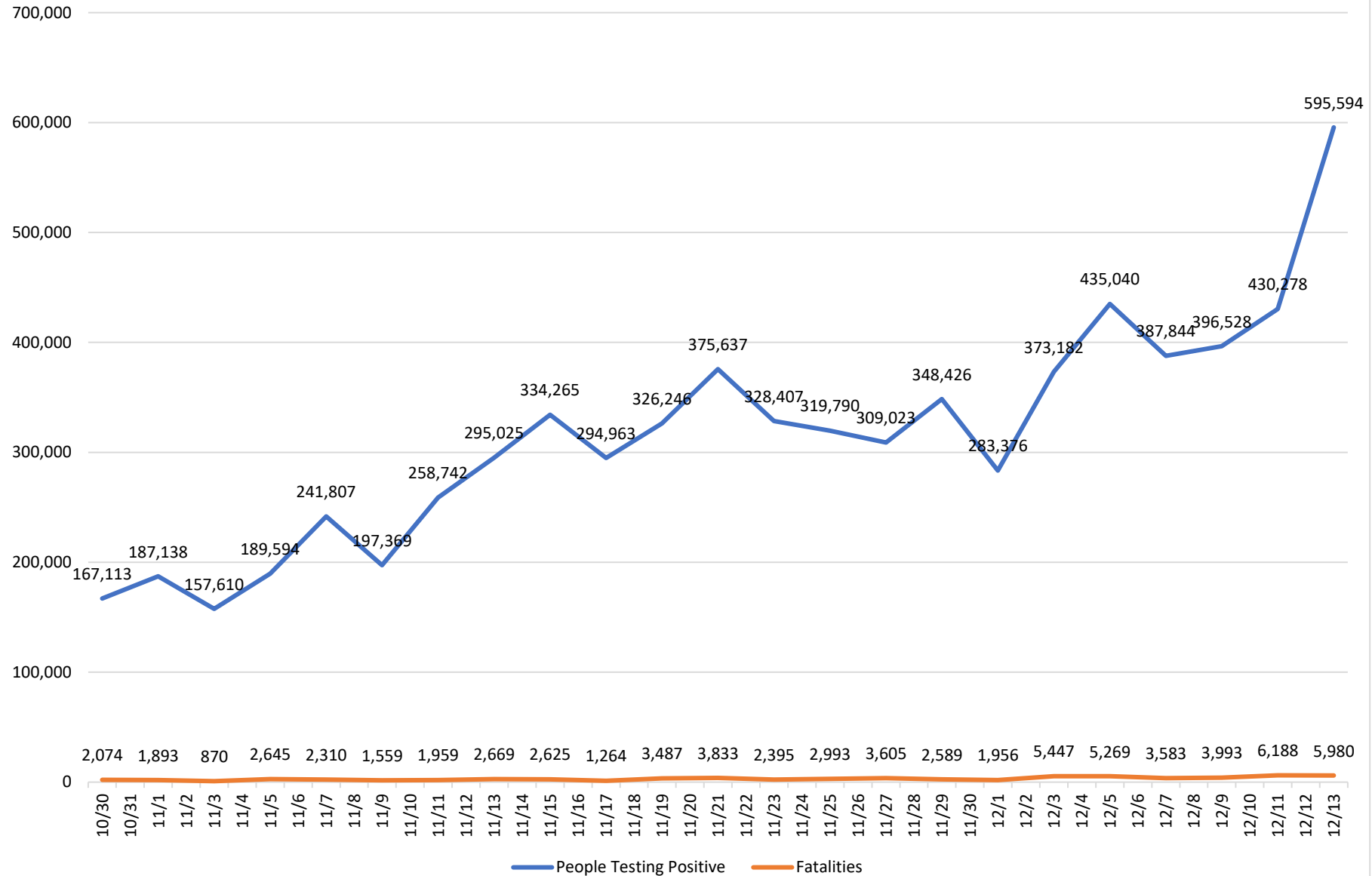
10-Day Rolling Average

Source: www.covidtracking.com



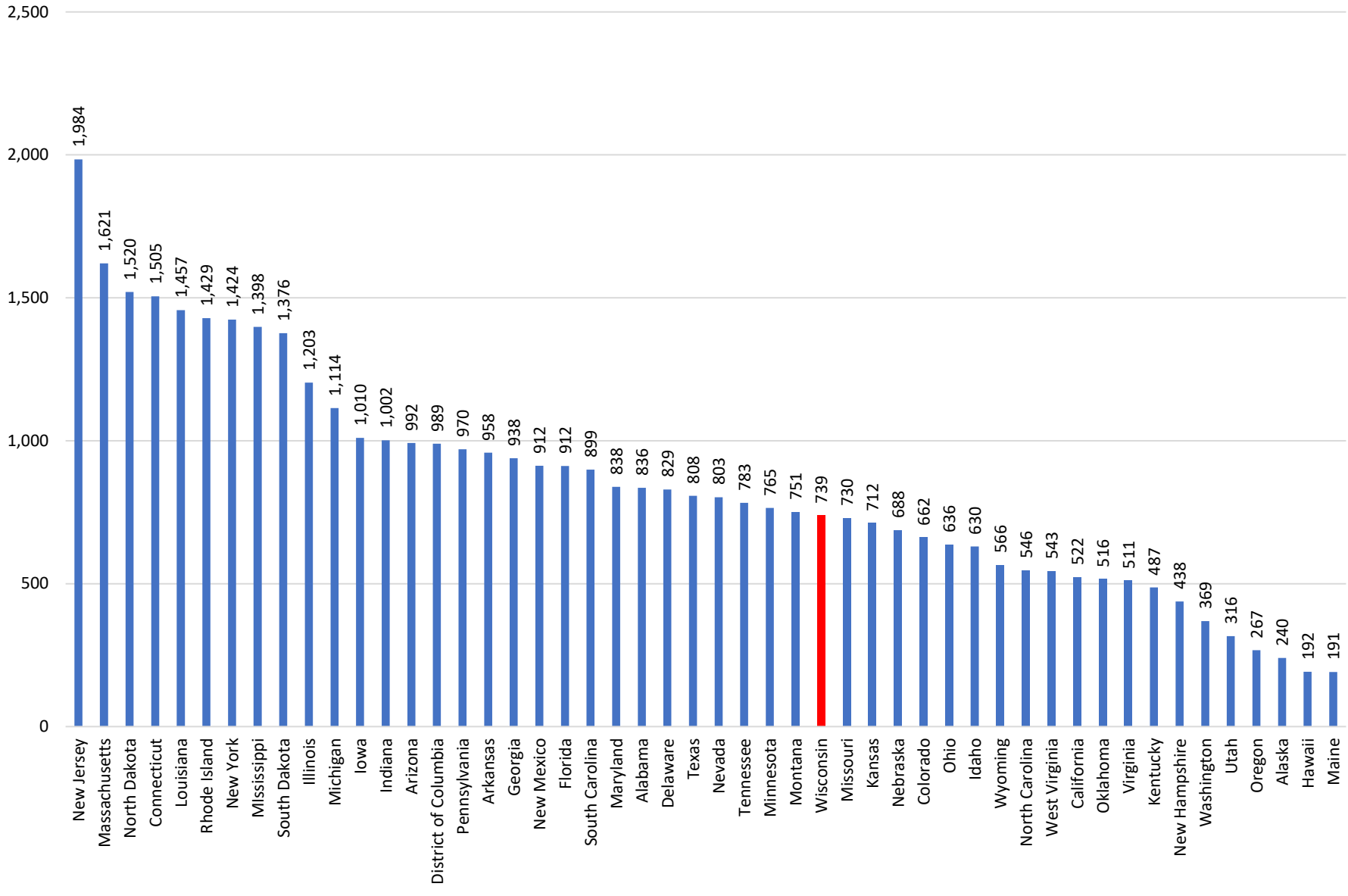
## Two-Day Change in Cumulative Numbers - USA

Source: [www.covidtracking.com](http://www.covidtracking.com)



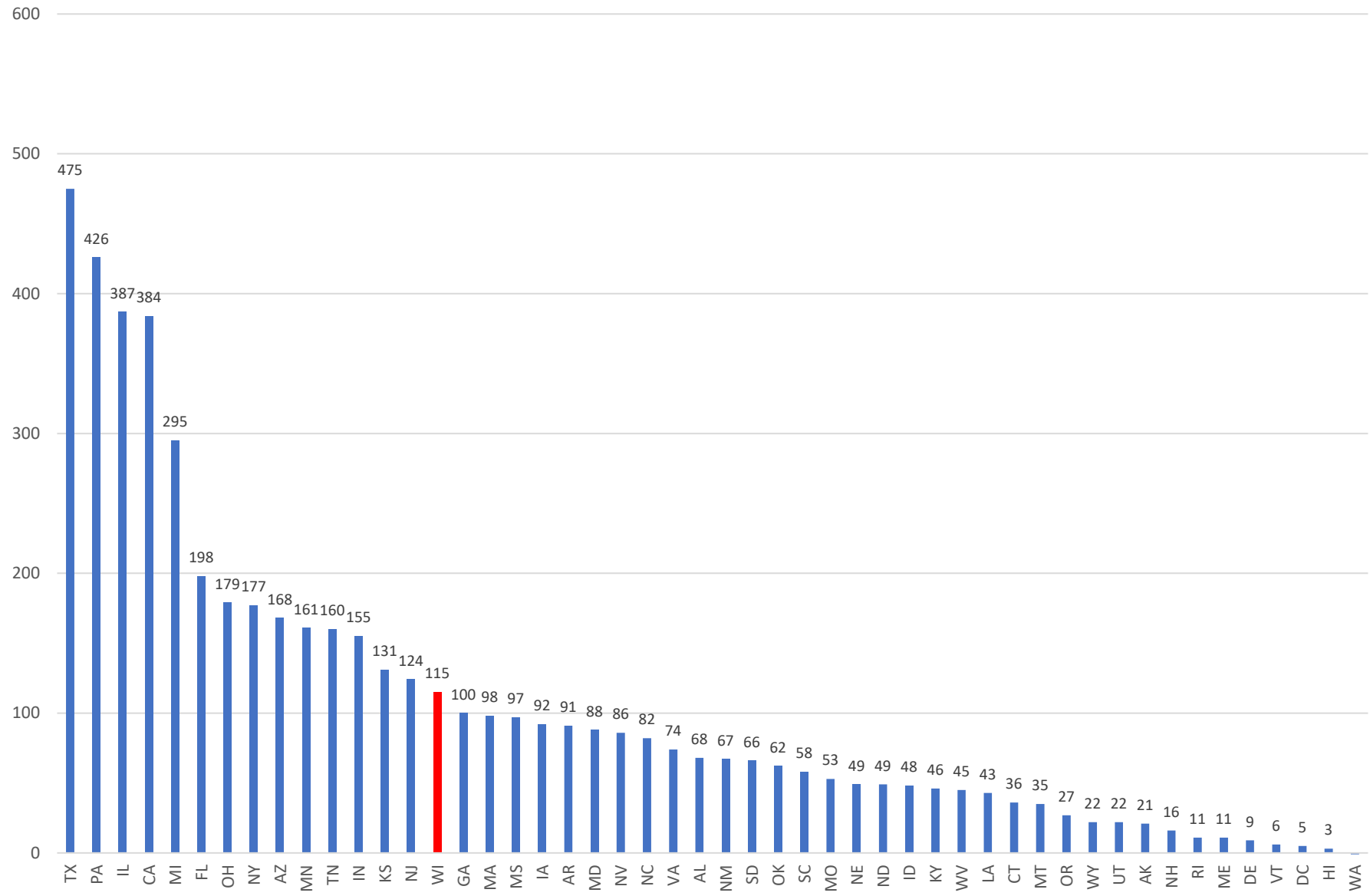
# COVID-19 Fatalities Per Million

Source: [www.covidtracking.com](http://www.covidtracking.com)



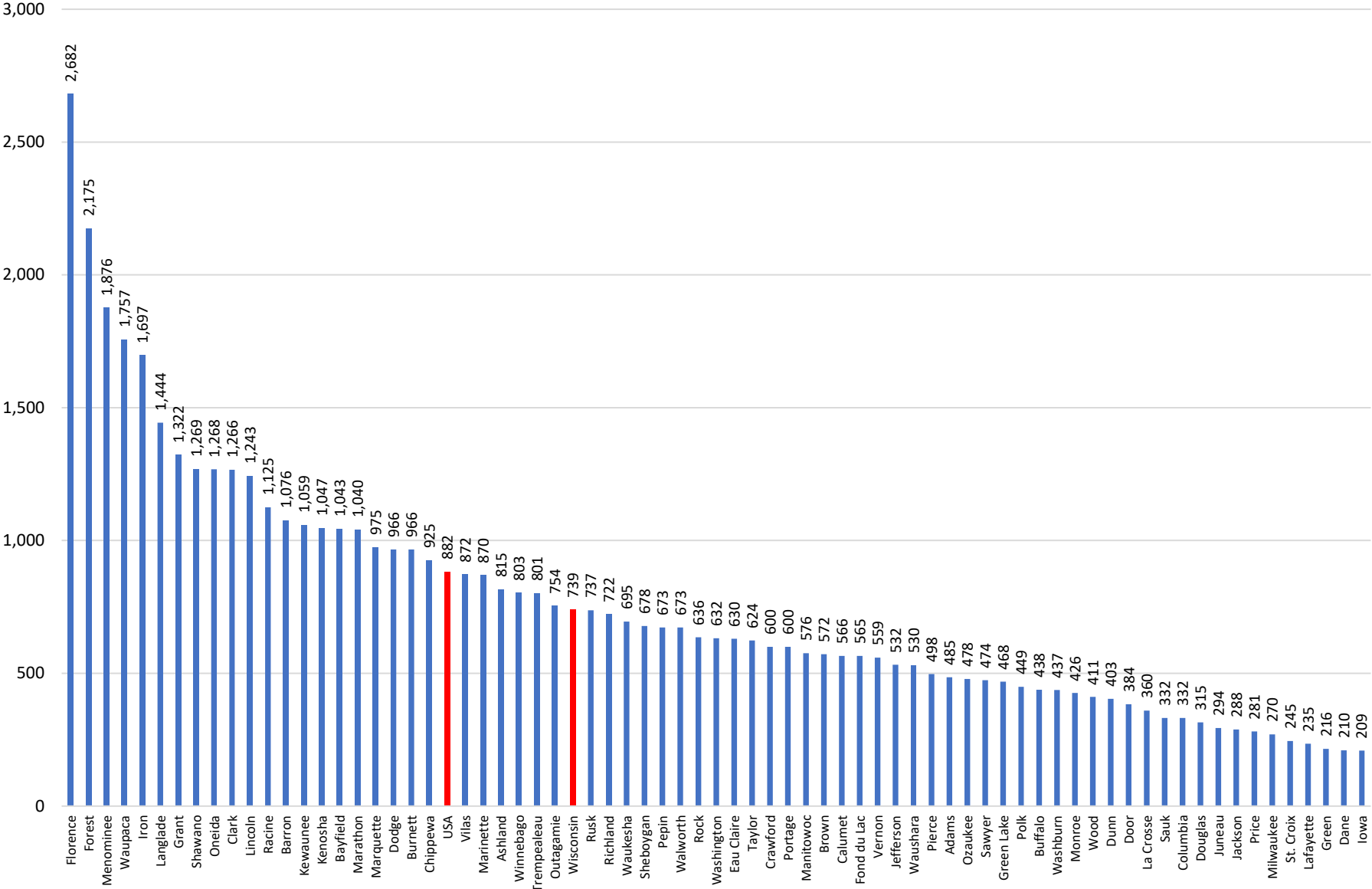
# Two-Day Change in Fatalities

Source: [www.covidtracking.com](http://www.covidtracking.com)



# Fatalities Per Million by Wisconsin County

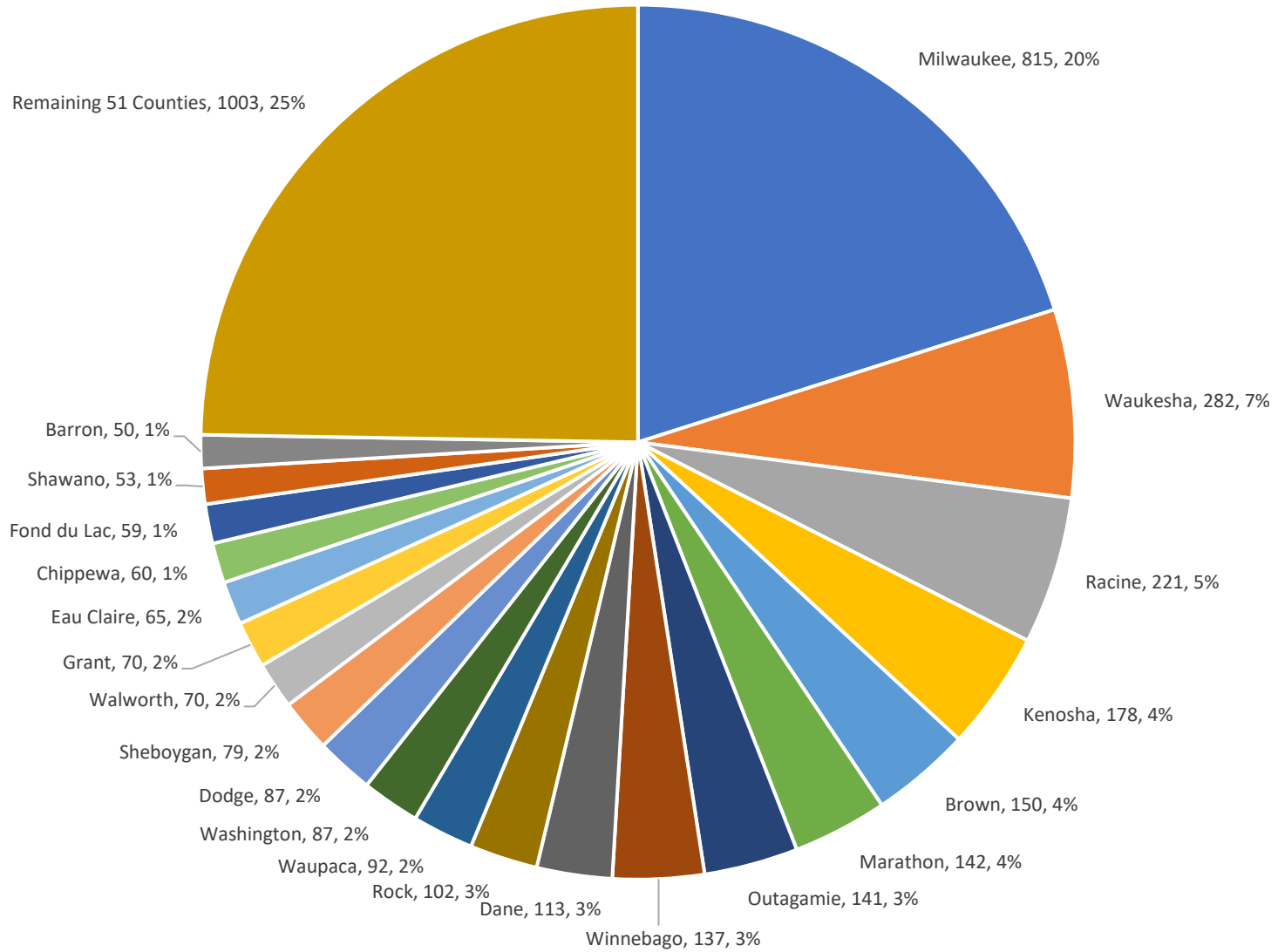
Source: Wisconsin Department of Health Services





# Number of COVID-19 Deaths by County

Source: [www.covidtracker.com](http://www.covidtracker.com)



# Cumulative COVID-19 Deaths by State

Source: [www.covidtracking.com](http://www.covidtracking.com)

