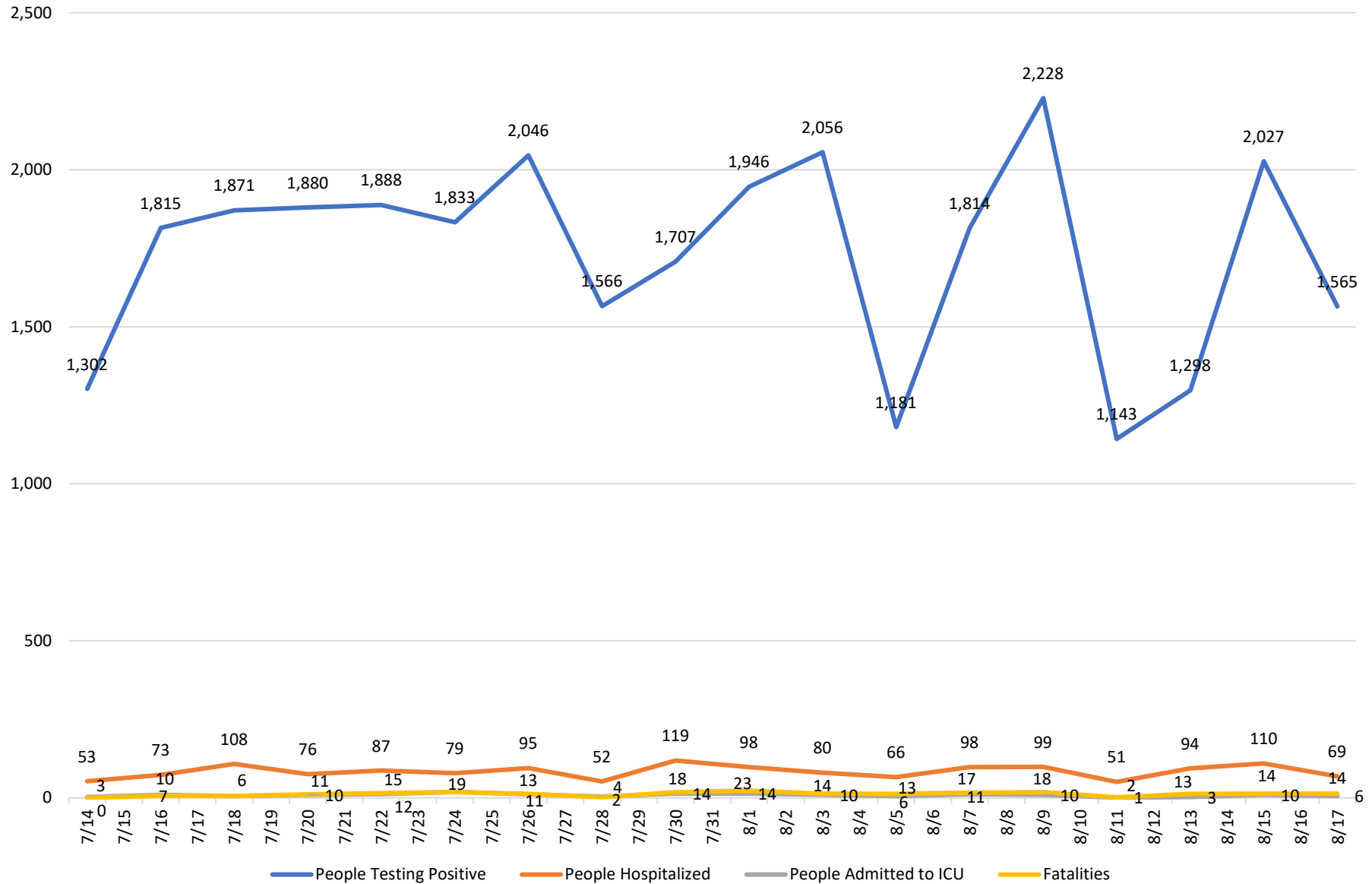


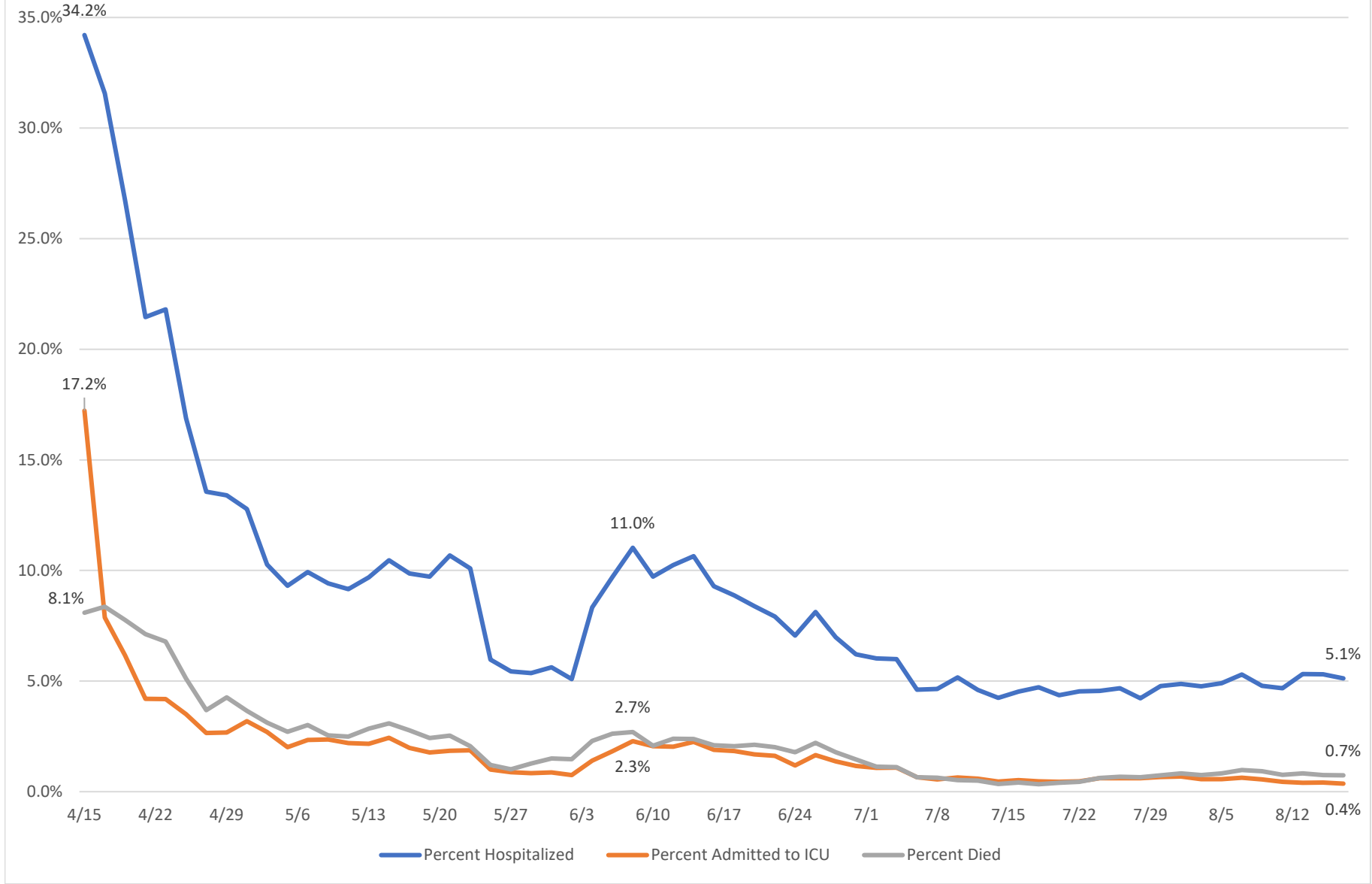
Net Two-Day Change in Cumulative Numbers - Wisconsin

Source: covidtracking.com



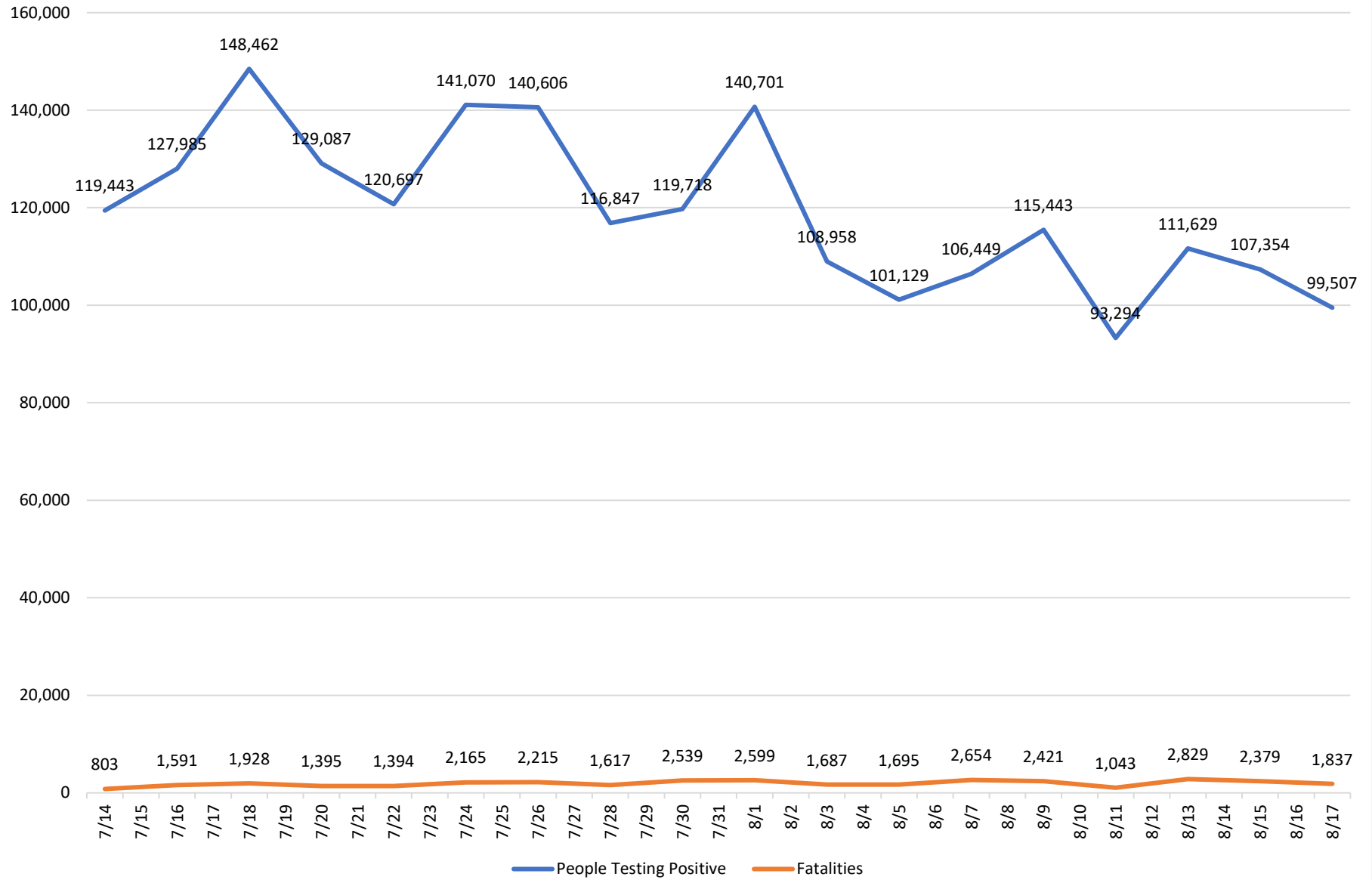
Outcomes for People Who Test Positive in Wisconsin

10-Day Rolling Average
Source: www.covidtracking.com



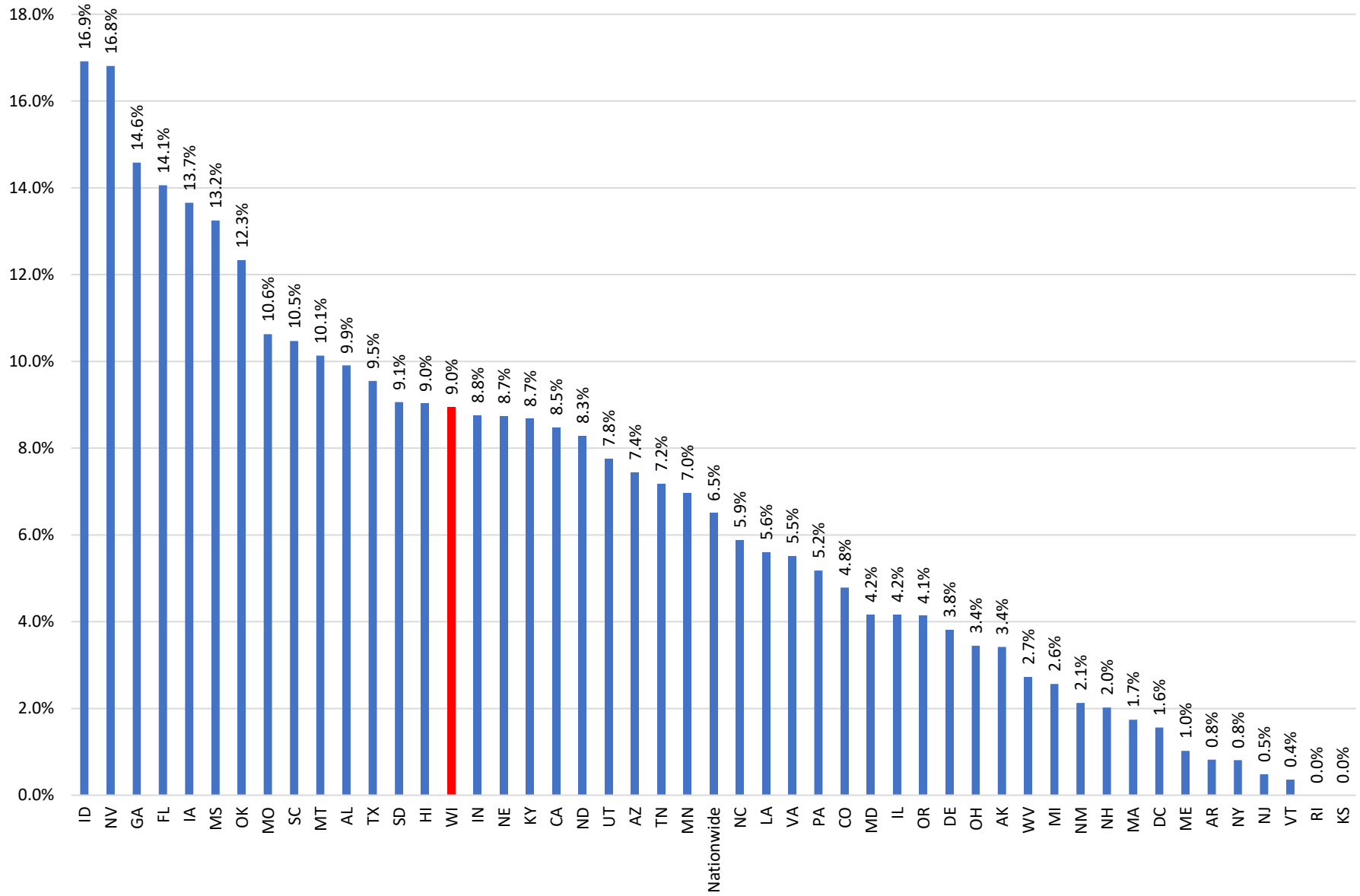
Two-Day Change in Cumulative Numbers - USA

Source: www.covidtracking.com



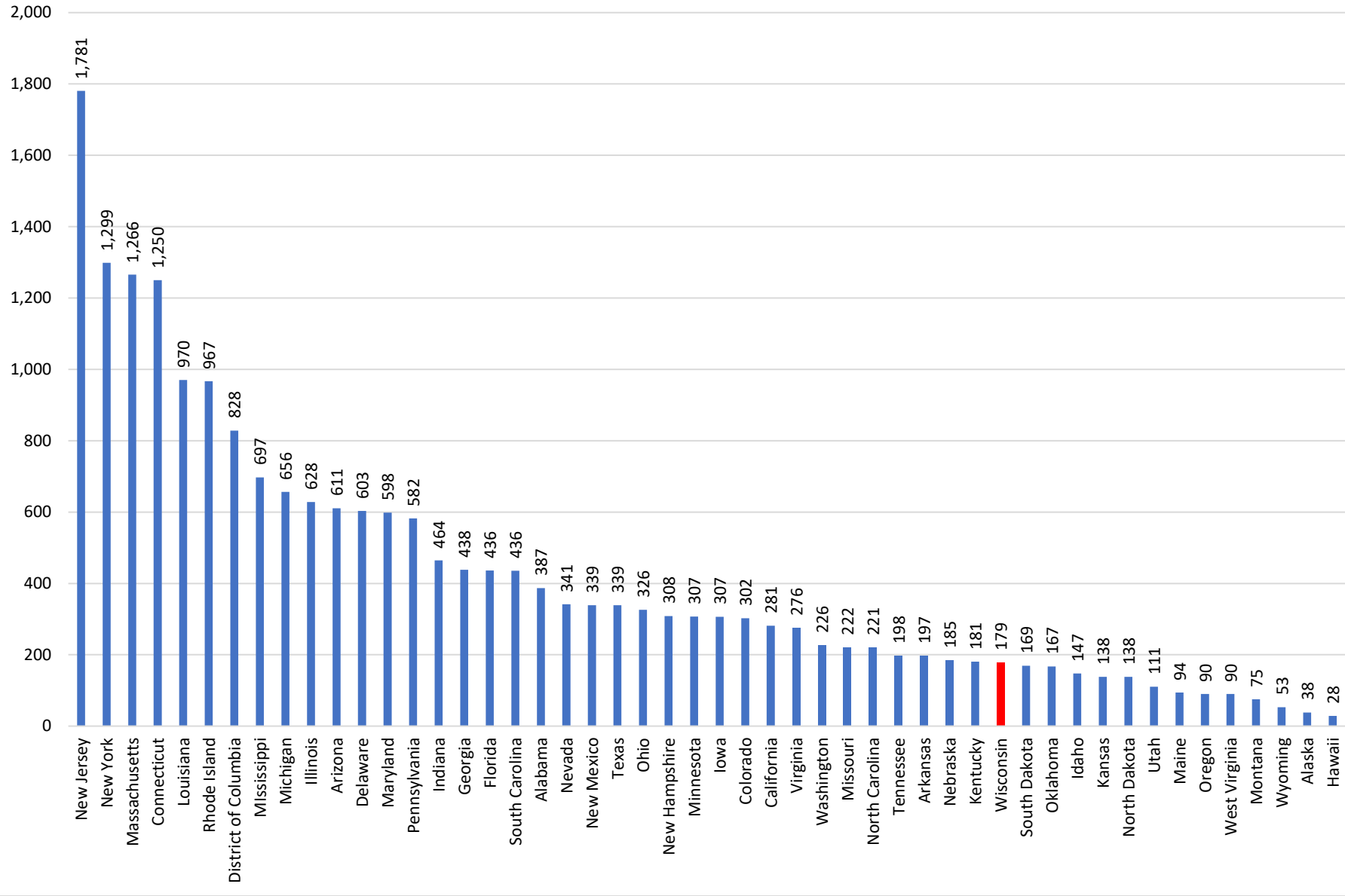
People Testing Positive as Percent of People Tested in Most Recent Two-Day Period

Source: covidtracking.com



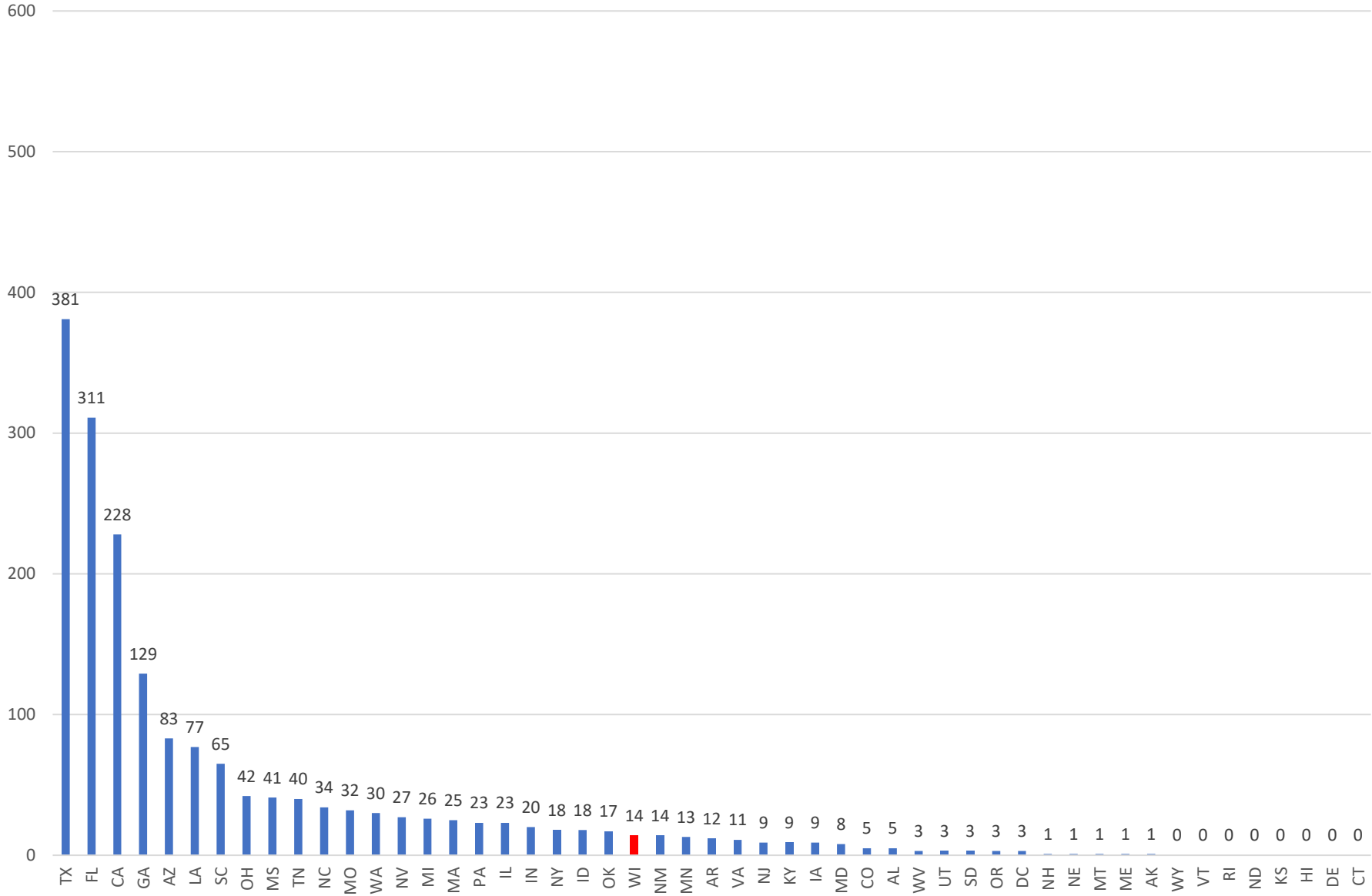
COVID-19 Fatalities Per Million

Source: www.covidtracking.com



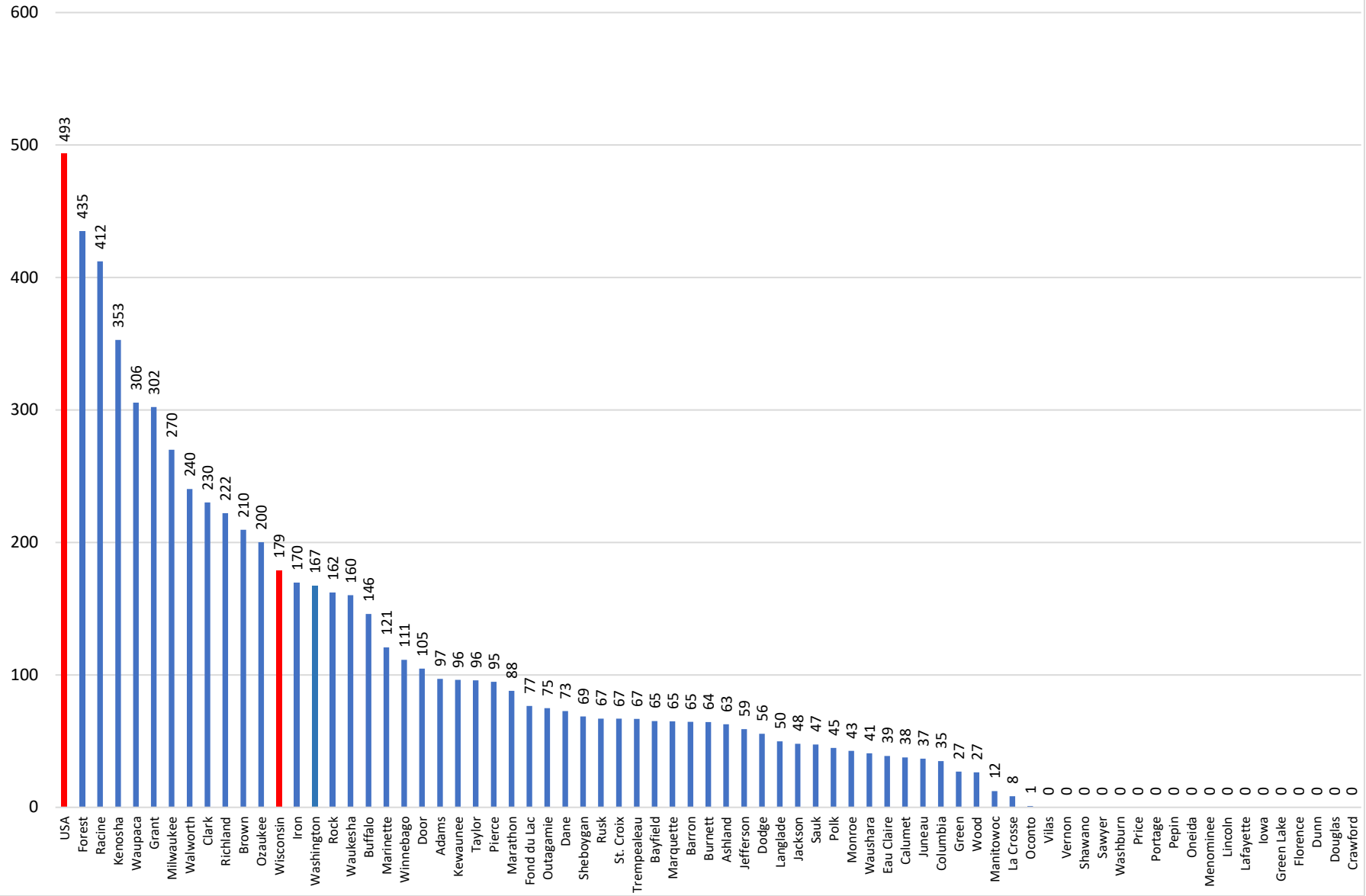
Two-Day Change in Fatalities

Source: www.covidtracking.com

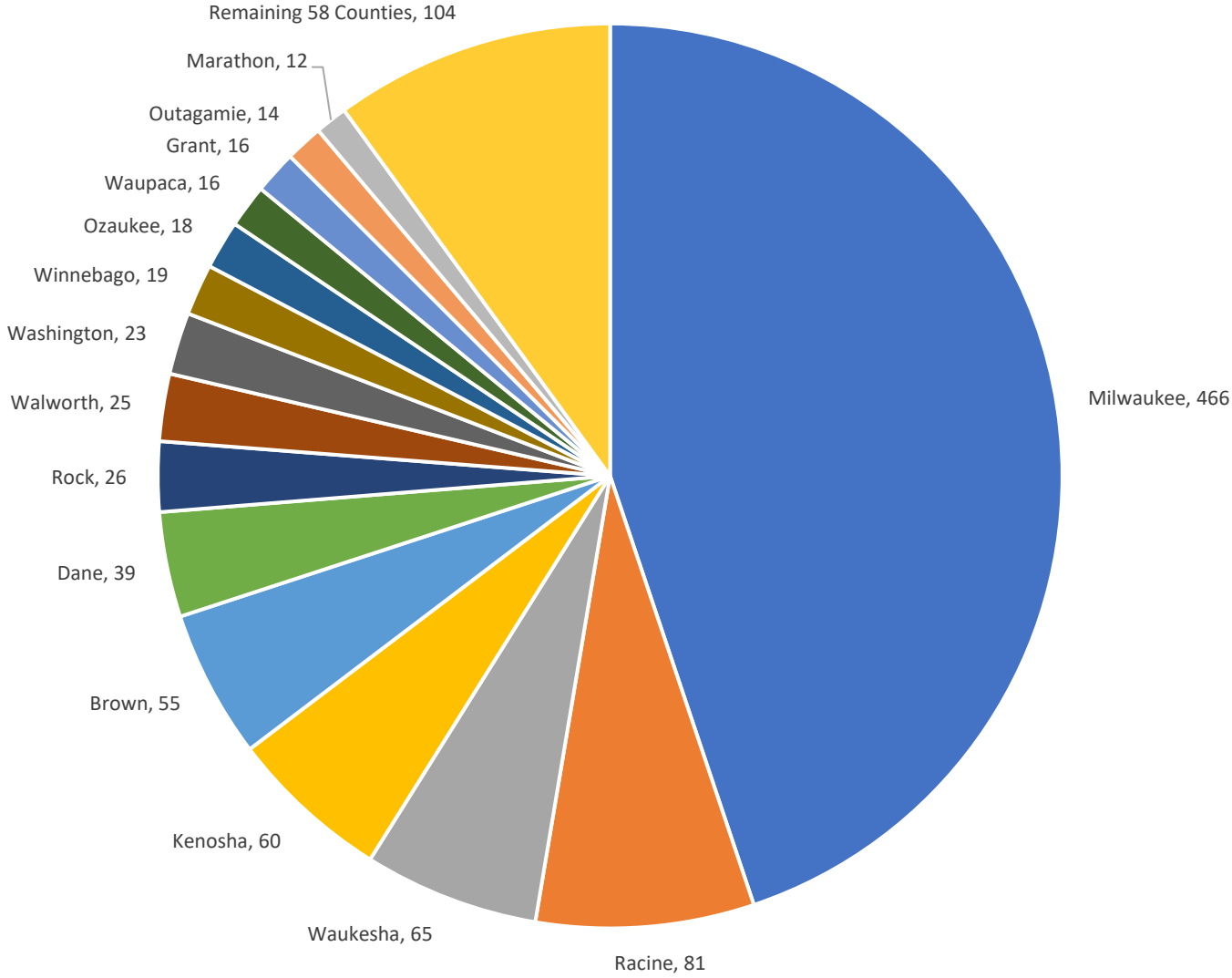


Fatalities Per Million by Wisconsin County

Source: Wisconsin Department of Health Services



Number of COVID-19 Deaths by County
Source: www.covidtracker.com



Cumulative COVID-19 Deaths by State
Source: www.covidtracking.com

