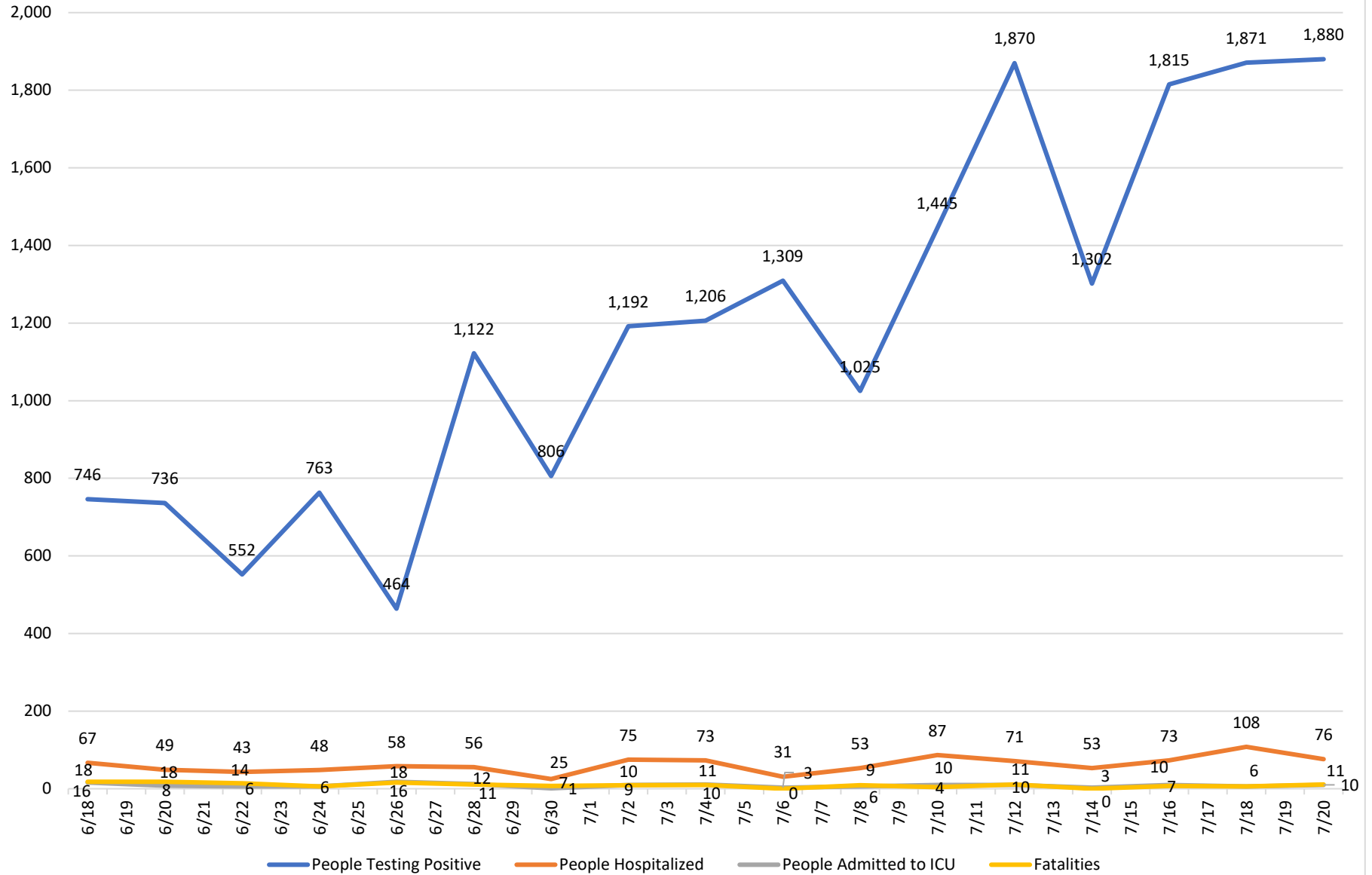


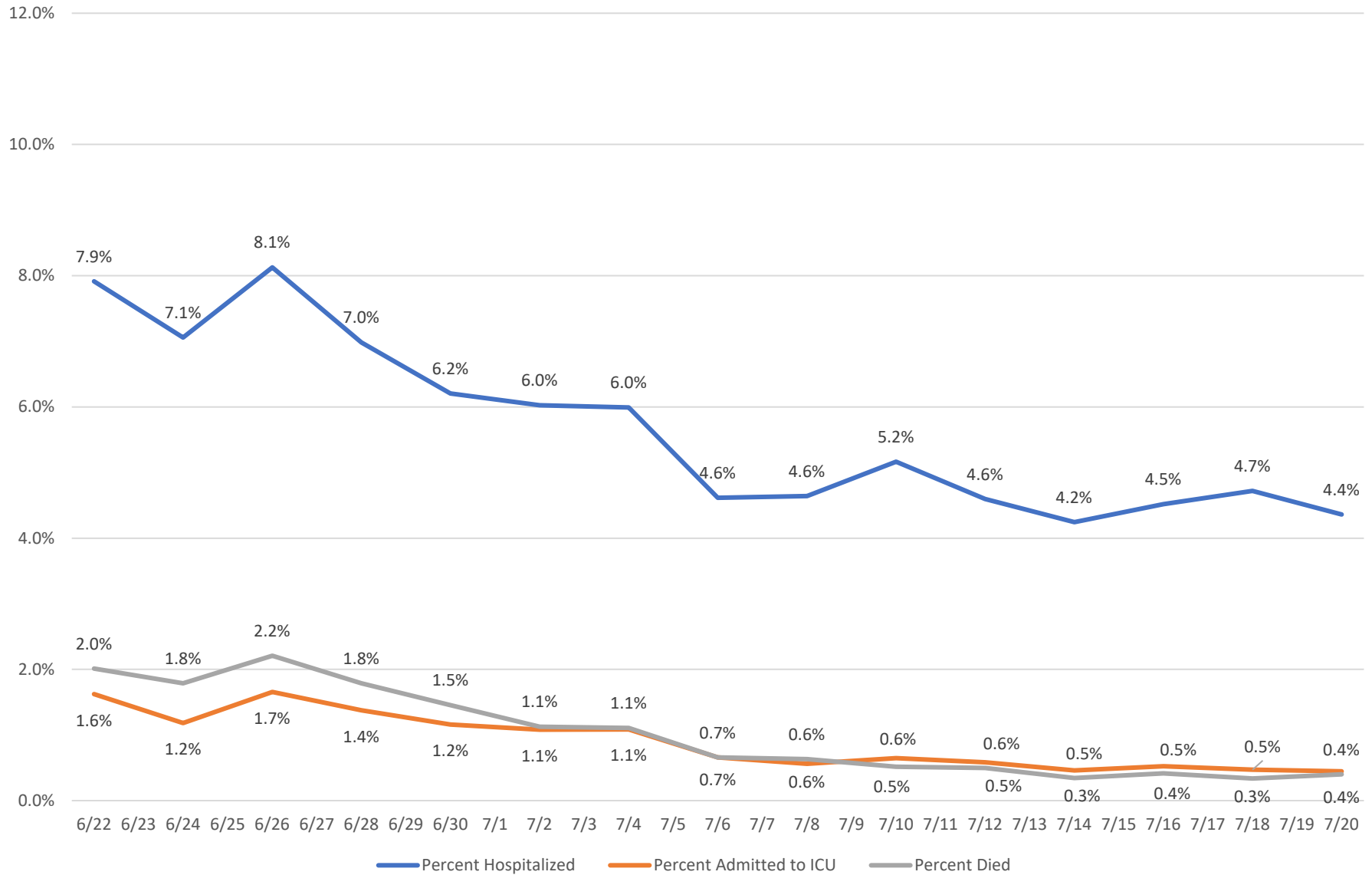
Net Two-Day Change in Cumulative Numbers - Wisconsin

Source: covidtracking.com



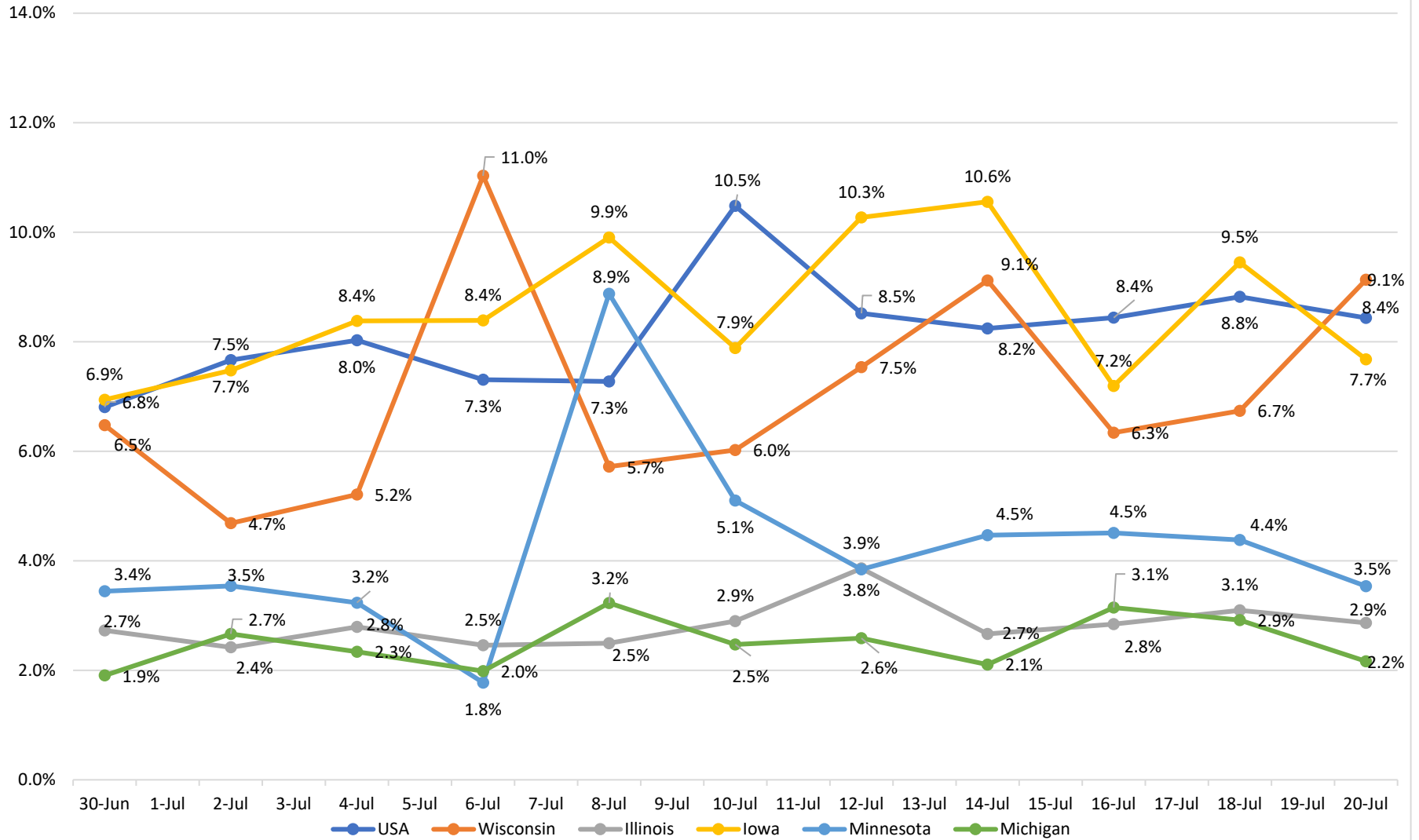
Outcomes for People Who Test Positive in Wisconsin

10-Day Rolling Average
Source: www.covidtracking.com



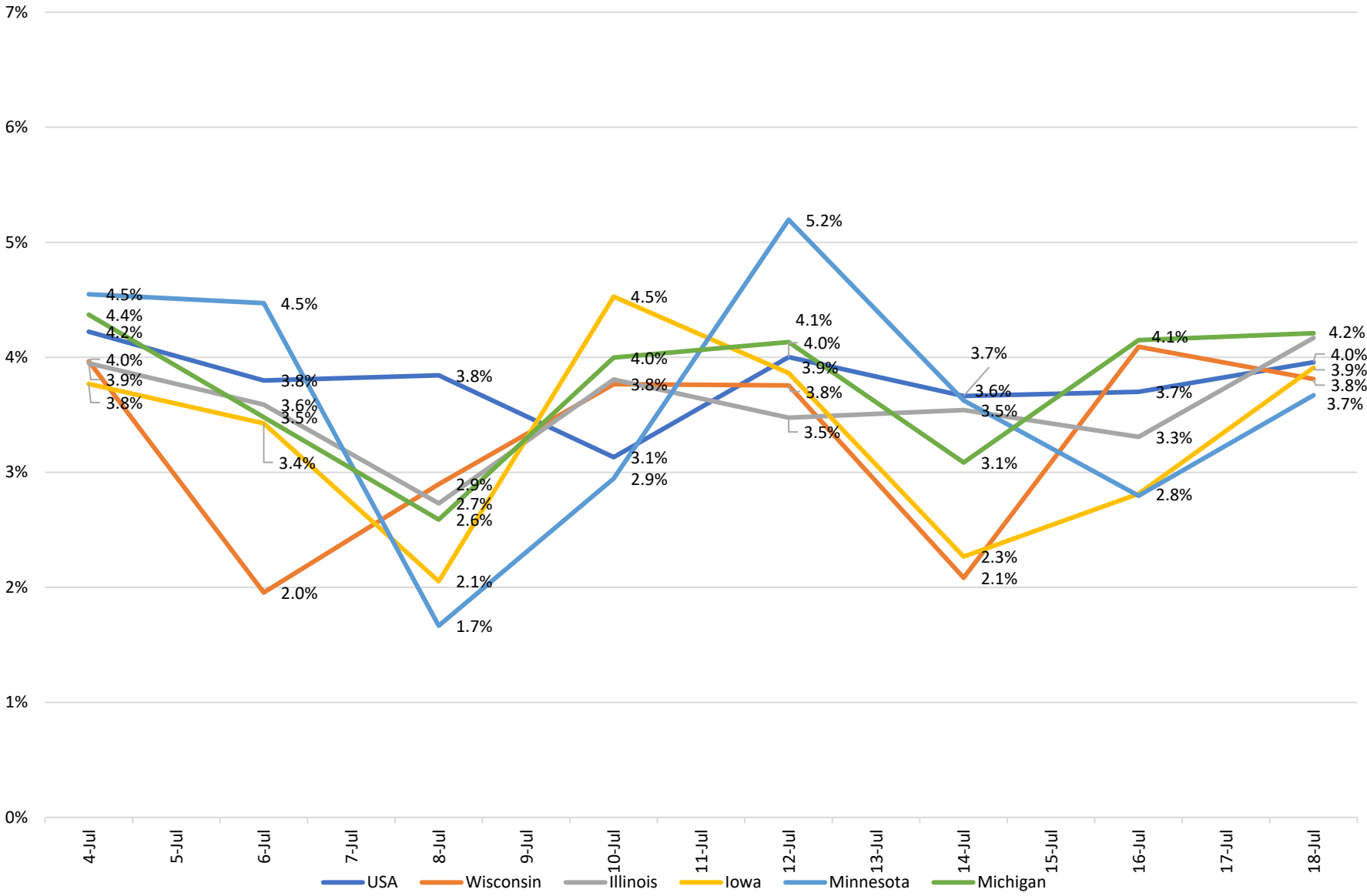
2-Day Change in Percent of Tests Positive for COVID-19

www.covidtracking.com



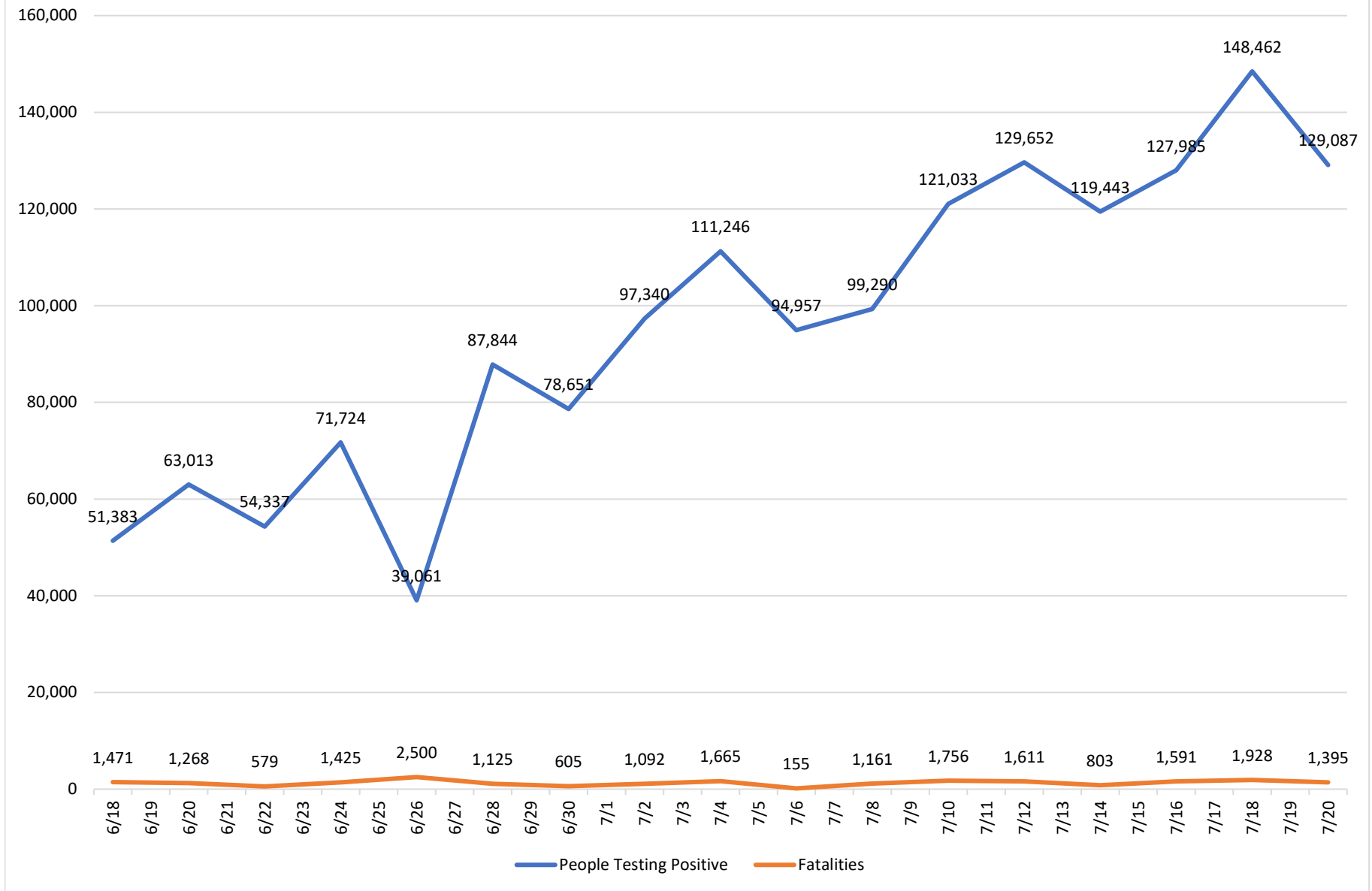
Two-Day Change in People Tested

www.covidtracking.com



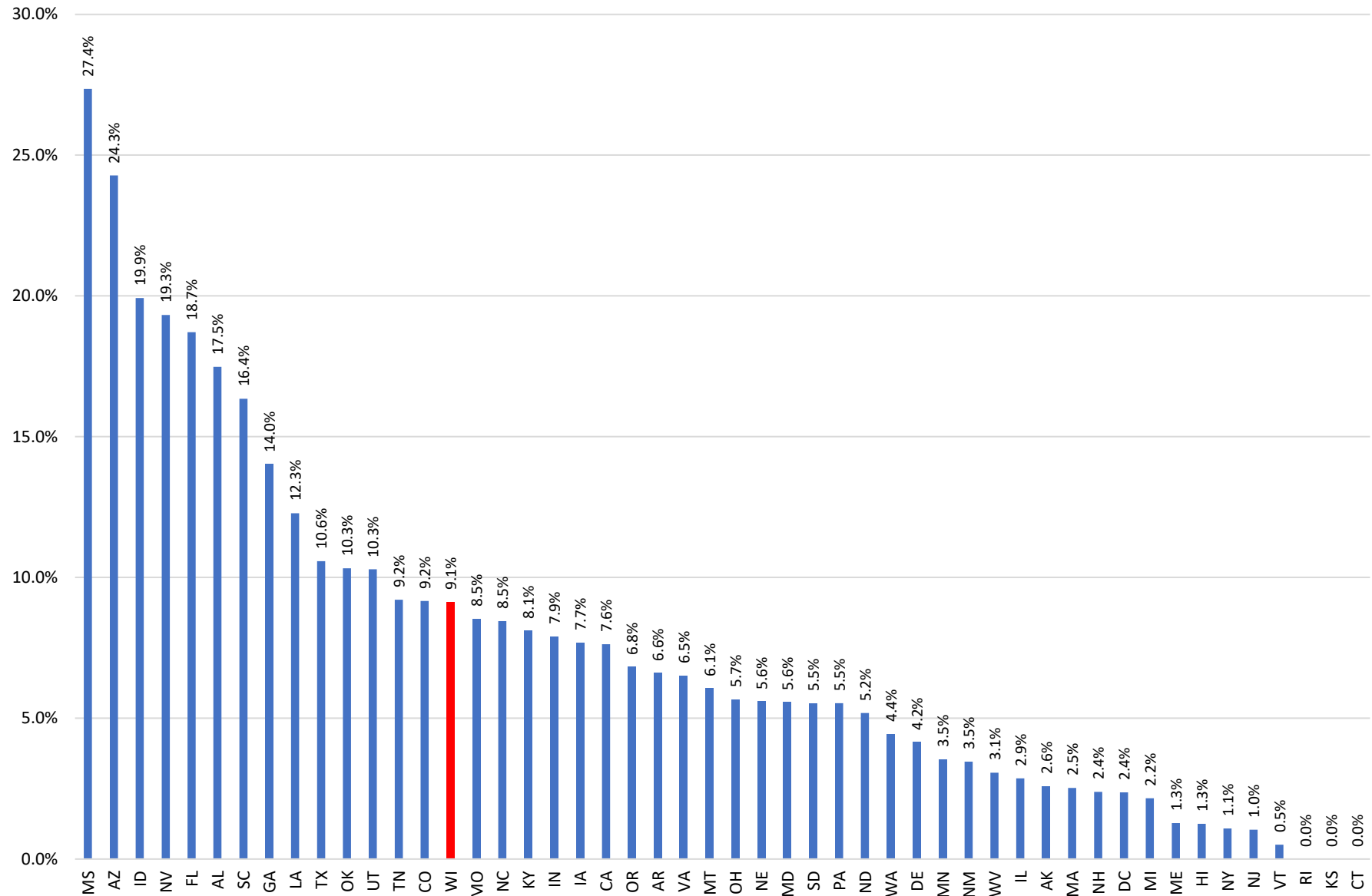
Two-Day Change in Cumulative Numbers - USA

Source: www.covidtracking.com



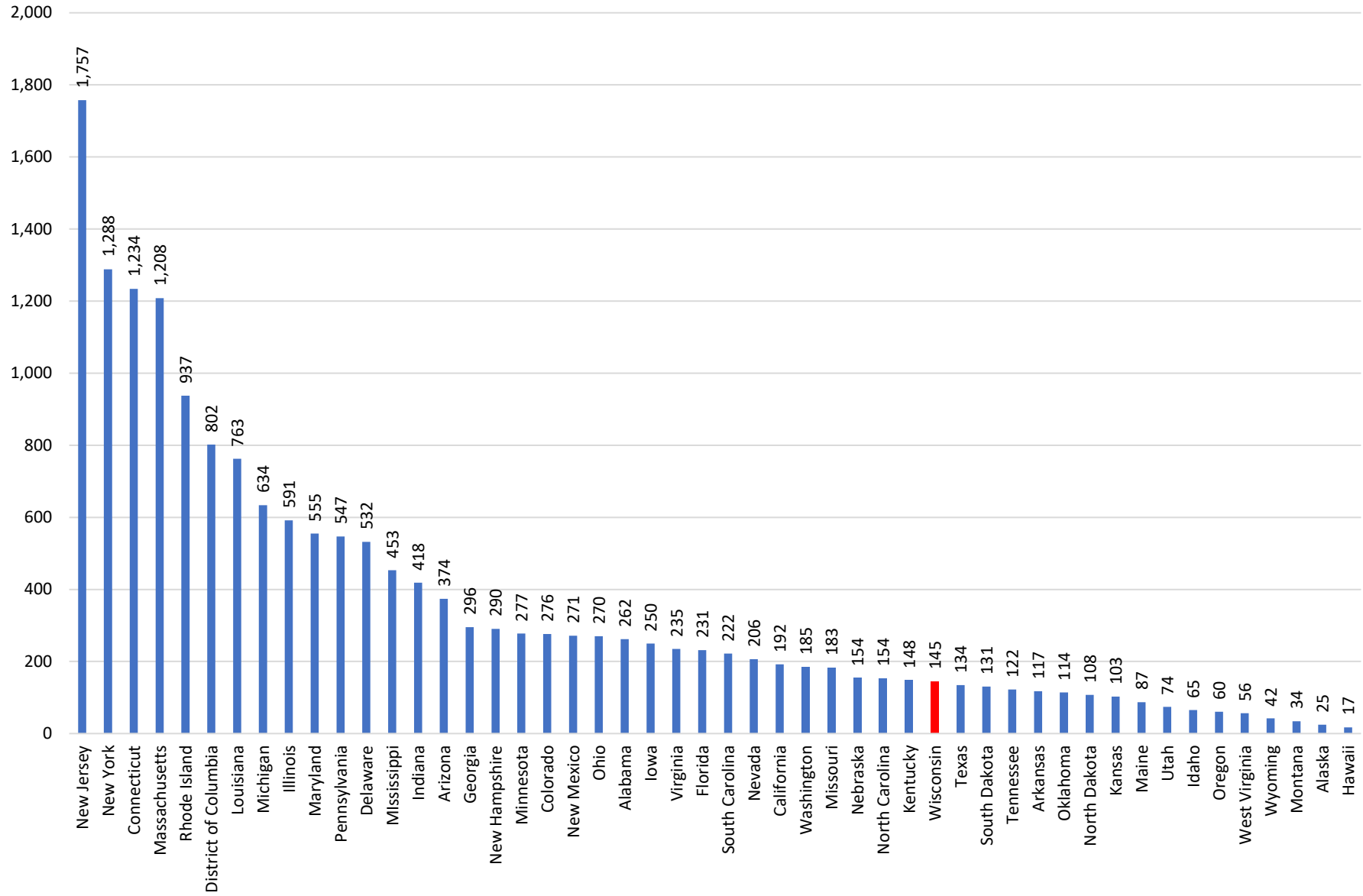
People Testing Positive as Percent of People Tested in Most Recent Two-Day Period

Source: covidtracking.com



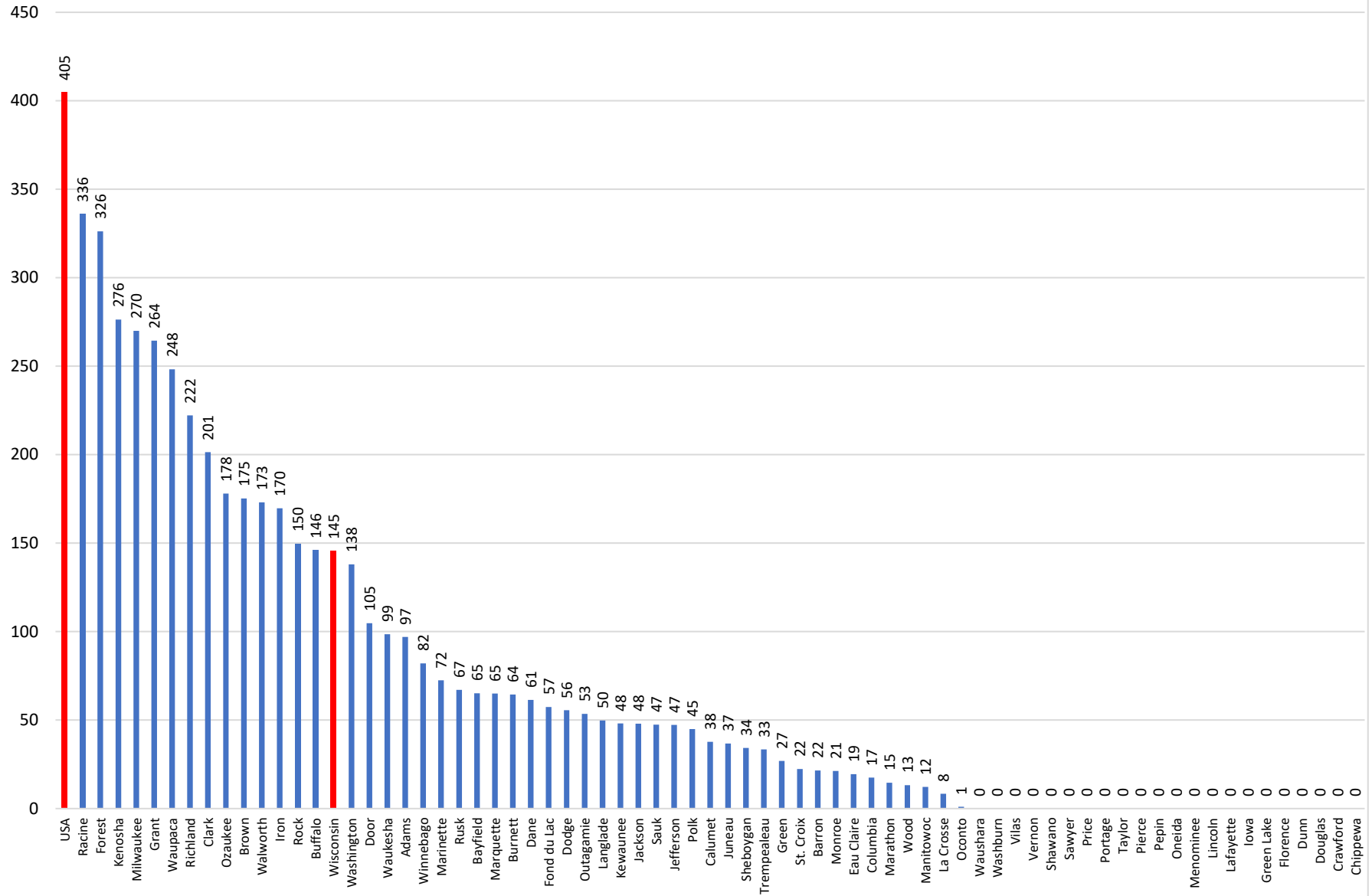
COVID-19 Fatalities Per Million

Source: www.covidtracking.com



Fatalities Per Million by Wisconsin County

Source: Wisconsin Department of Health Services



COVID-19 Testing, Infection & Hospitalization Tracker

Data current as of: 7/20/2020 (6:16 a.m.)

Data Source: Covidtracking.com

	Percent of Population Tested	Percent of People Tested Who Were Positive	Percent of People Who Tested Positive & Were Hospitalized	Percent of People Hospitalized Who Were Admitted to ICU	Percent of Total Population Hospitalized	Percent of People Who Tested Positive & Died	Percent of Total Population Who Have Died
U.S. Total	13.93%	8.2%				3.5%	0.0405%
Median of States	12.33%	7.6%	10.1%	26.7%	0.081%	2.2%	0.0214%
Maximum State	26.31%	18.3%	22.2%	35.9%	0.463%	9.2%	0.1757%
Minimum State	0.00%	1.3%	0.0%	12.7%	0.010%	0.7%	0.0000%
States with Highest % of Populaton Tested	23.02%	7.6%	18.1%		0.288%	3.9%	0.0763%

REGIONS

Maximum							
MIDWEST	14.78%	5.9%	10.0%	21.2%	0.081%	4.6%	0.0418%
PLAINS STATES	10.48%	9.1%	6.6%	29.4%	0.050%	1.7%	0.0169%
SOUTHEAST	12.29%	11.3%	7.4%	18.8%	0.097%	1.8%	0.0227%
UPPER WEST	10.86%	4.8%	6.5%	30.9%	0.032%	1.5%	0.0065%
WEST COAST	10.15%	5.8%	10.0%		0.048%	2.0%	0.0185%
MOUNTAIN/SOUTHWEST	12.41%	9.1%	10.0%	26.7%	0.096%	1.9%	0.0271%
SOUTH	12.91%	8.2%	8.1%		0.066%	1.5%	0.0126%
EAST	12.16%	8.5%	14.5%	24.2%	0.130%	4.2%	0.0532%
NORTHEAST	16.97%	8.0%	11.7%	28.7%	0.198%	6.4%	0.1208%
OUTLYNG	15.49%	1.3%	10.3%		0.010%	1.3%	0.0021%

Data Source: Covidtracking.com

Percent of Population Tested	Percent of People Tested Who Were Positive	Percent of People Who Tested Positive & Were Hospitalized	Percent of People Hospitalized Who Were Admitted to ICU	Percent of Total Population Hospitalized	Percent of People Who Tested Positive & Died	Percent of Total Population Who Have Died
------------------------------	--	---	---	--	--	---

A blank field means no data was available

Median calculations only include states with available data

States with Highest % of Populaton Tested							
	23.02%	7.6%	18.1%		0.288%	3.9%	0.0763%
1 New York	26.31%	8.0%	22.1%		0.463%	6.2%	0.1288%
2 Alaska	23.57%	1.3%				0.8%	0.0025%
3 Louisiana	23.02%	8.6%				3.9%	0.0763%
4 New Mexico	21.97%	3.6%	14.1%		0.113%	3.4%	0.0271%
5 District of Columbia	20.50%	7.6%				5.1%	0.0802%
MIDWEST							
	14.78%	5.9%	10.0%	21.2%	0.081%	4.6%	0.0418%
Wisconsin	13.28%	5.9%	8.9%	20.1%	0.070%	1.9%	0.0145%
Illinois	17.74%	7.2%				4.6%	0.0591%
Minnesota	14.97%	5.4%	10.0%	30.0%	0.081%	3.4%	0.0277%
Michigan	14.78%	5.5%				7.8%	0.0634%
Indiana	9.29%	9.0%	14.0%	21.2%	0.117%	5.0%	0.0418%
PLAINS STATES							
	10.48%	9.1%	6.6%	29.4%	0.050%	1.7%	0.0169%
Iowa	13.07%	9.3%				2.1%	0.0250%
Nebraska	11.90%	9.7%				1.3%	0.0154%
Kansas	8.57%	8.8%	6.6%	29.4%	0.050%	1.4%	0.0103%
Missouri	9.06%	5.9%				3.4%	0.0183%
UPPER WEST							
	10.86%	4.8%	6.5%	30.9%	0.032%	1.5%	0.0065%
North Dakota	17.57%	3.7%	6.0%		0.040%	1.6%	0.0108%
South Dakota	10.86%	8.1%	9.8%		0.086%	1.5%	0.0131%
Wyoming	7.77%	4.8%	6.7%		0.025%	1.1%	0.0042%
Montana	12.25%	1.9%	6.5%		0.015%	1.5%	0.0034%
Idaho	8.01%	9.8%	4.1%	30.9%	0.032%	0.8%	0.0065%

Data Source: Covidtracking.com

Percent of Population Tested	Percent of People Tested Who Were Positive	Percent of People Who Tested Positive & Were Hospitalized	Percent of People Hospitalized Who Were Admitted to ICU	Percent of Total Population Hospitalized	Percent of People Who Tested Positive & Died	Percent of Total Population Who Have Died
------------------------------	--	---	---	--	--	---

A blank field means no data was available

Median calculations only include states with available data

Region	Percent of Population Tested	Percent of People Tested Who Were Positive	Percent of People Who Tested Positive & Were Hospitalized	Percent of People Hospitalized Who Were Admitted to ICU	Percent of Total Population Hospitalized	Percent of People Who Tested Positive & Died	Percent of Total Population Who Have Died
WEST COAST	10.15%	5.8%	10.0%		0.048%	2.0%	0.0185%
Washington	10.15%	5.8%	10.9%		0.065%	3.1%	0.0185%
Oregon	7.80%	4.3%	9.1%		0.031%	1.8%	0.0060%
California	15.74%	6.1%				2.0%	0.0192%
MOUNTAIN/SOUTHWEST	12.41%	9.1%	10.0%	26.7%	0.096%	1.9%	0.0271%
Colorado	7.46%	9.1%	15.1%		0.103%	4.1%	0.0276%
Utah	14.10%	7.4%	6.0%	26.7%	0.062%	0.7%	0.0074%
Nevada	12.41%	9.2%				1.8%	0.0206%
Arizona	10.65%	18.3%	4.6%		0.090%	1.9%	0.0374%
New Mexico	21.97%	3.6%	14.1%		0.113%	3.4%	0.0271%
SOUTH	12.91%	8.2%	8.1%		0.066%	1.5%	0.0126%
Texas	9.95%	11.1%				1.2%	0.0134%
Louisiana	23.02%	8.6%				3.9%	0.0763%
Arkansas	13.79%	7.8%	6.7%		0.072%	1.1%	0.0117%
Oklahoma	12.03%	5.3%	9.5%		0.060%	1.8%	0.0114%
EAST	12.16%	8.5%	14.5%	24.2%	0.130%	4.2%	0.0532%
Pennsylvania	8.01%	9.8%				6.9%	0.0547%
Virginia	10.52%	8.5%	14.5%		0.130%	2.6%	0.0235%
West Virginia	12.99%	2.2%				2.0%	0.0056%
Delaware	15.57%	8.8%				3.9%	0.0532%
Maryland	12.16%	10.6%	15.2%		0.195%	4.3%	0.0555%
District of Columbia	20.50%	7.6%				5.1%	0.0802%
Ohio	9.90%	6.4%	12.8%	24.2%	0.081%	4.2%	0.0270%

Data Source: Covidtracking.com

Percent of Population Tested	Percent of People Tested Who Were Positive	Percent of People Who Tested Positive & Were Hospitalized	Percent of People Hospitalized Who Were Admitted to ICU	Percent of Total Population Hospitalized	Percent of People Who Tested Positive & Died	Percent of Total Population Who Have Died
------------------------------	--	---	---	--	--	---

A blank field means no data was available

Median calculations only include states with available data

NORTHEAST	16.97%	8.0%	11.7%	28.7%	0.198%	6.4%	0.1208%
New York	26.31%	8.0%	22.1%		0.463%	6.2%	0.1288%
New Jersey	20.04%	9.9%	11.9%		0.236%	8.9%	0.1757%
Connecticut	17.68%	7.6%	22.2%		0.299%	9.2%	0.1234%
Rhode Island	16.97%	9.9%	11.7%		0.198%	5.6%	0.0937%
Massachusetts	14.91%	10.9%	10.3%		0.168%	7.4%	0.1208%
Maine	10.21%	2.7%	10.2%		0.028%	3.2%	0.0087%
New Hampshire	10.46%	4.3%	10.8%	28.7%	0.049%	6.4%	0.0290%
OUTLYNG	15.49%	1.3%	10.3%		0.010%	1.3%	0.0021%
Alaska	23.57%	1.3%				0.8%	0.0025%
Hawaii	7.41%	1.3%	10.3%		0.010%	1.8%	0.0017%
SOUTHEAST	12.29%	11.34%	7.41%	18.80%	0.097%	1.79%	0.0227%
Kentucky	10.89%	4.5%	13.0%	35.9%	0.064%	3.0%	0.0148%
Tennessee	17.36%	6.5%	4.7%		0.053%	1.1%	0.0122%
North Carolina	13.14%	7.2%	0.0%			1.6%	0.0154%
South Carolina	11.08%	12.1%	6.0%		0.080%	1.7%	0.0222%
Mississippi	12.65%	11.3%	8.7%		0.125%	3.2%	0.0453%
Florida	13.65%	11.7%	6.1%		0.097%	1.5%	0.0231%
Alabama	11.93%	11.4%	11.6%	12.7%	0.159%	1.9%	0.0262%
Georgia	11.69%	11.4%	10.5%	18.8%	0.140%	2.2%	0.0296%