

COVID-19 Testing, Infection & Hospitalization Tracker

Data current as of: 7/2/2020 (7:16 a.m.)

Data Source: Covidtracking.com

	Percent of Population Tested	Percent of People Tested Who Were Positive	Percent of People Who Tested Positive & Were Hospitalized	Percent of People Hospitalized Who Were Admitted to ICU	Percent of Total Population Hospitalized	Percent of People Who Tested Positive & Died	Percent of Total Population Who Have Died
A blank field means no data was available							
Median calculations only include states with available data							
U.S. Total	10.00%	8.1%				4.5%	0.0368%
Median of States	8.98%	6.9%	10.9%	28.7%	0.060%	3.2%	0.0165%
Maximum State	23.12%	15.3%	22.8%	38.2%	0.463%	9.3%	0.1687%
Minimum State	0.00%	0.9%	0.0%	20.9%	0.008%	0.8%	0.0000%
States with Highest % of Populaton Tested	16.42%	8.0%	13.8%		0.207%	5.7%	0.0905%

REGIONS

Maximum							
MIDWEST	10.57%	6.7%	11.1%	21.7%	0.072%	4.9%	0.0393%
PLAINS STATES	7.78%	8.8%	7.7%	31.9%	0.040%	2.1%	0.0153%
SOUTHEAST	8.66%	8.7%	8.5%	29.0%	0.059%	2.4%	0.0156%
UPPER WEST	8.59%	4.5%	7.7%	35.2%	0.021%	1.5%	0.0050%
WEST COAST	7.15%	5.5%	12.5%		0.040%	2.6%	0.0152%
MOUNTAIN/SOUTHWEST	9.05%	6.7%	11.1%	28.7%	0.078%	2.7%	0.0233%
SOUTH	9.56%	7.4%	8.9%		0.043%	2.1%	0.0095%
EAST	8.92%	10.3%	15.0%	25.4%	0.105%	4.7%	0.0518%
NORTHEAST	13.41%	9.7%	11.7%	28.7%	0.190%	6.4%	0.1158%
OUTLYNG	10.59%	1.0%	12.3%		0.008%	1.7%	0.0016%

Data Source: Covidtracking.com

Percent of Population Tested	Percent of People Tested Who Were Positive	Percent of People Who Tested Positive & Were Hospitalized	Percent of People Hospitalized Who Were Admitted to ICU	Percent of Total Population Hospitalized	Percent of People Who Tested Positive & Died	Percent of Total Population Who Have Died
------------------------------	--	---	---	--	--	---

A blank field means no data was available

Median calculations only include states with available data

States with Highest % of Populaton Tested							
	16.42%	8.0%	13.8%		0.207%	5.7%	0.0905%
1 Rhode Island	23.12%	6.9%	11.9%		0.190%	5.7%	0.0905%
2 New York	20.43%	9.9%	22.8%		0.463%	6.3%	0.1279%
3 New Mexico	16.42%	3.5%	15.7%		0.091%	4.1%	0.0237%
4 Louisiana	16.19%	8.0%				5.4%	0.0697%
5 New Jersey	16.15%	11.9%	11.7%		0.224%	8.8%	0.1687%
MIDWEST							
	10.57%	6.7%	11.1%	21.7%	0.072%	4.9%	0.0393%
Wisconsin	9.98%	5.5%	10.8%	21.7%	0.060%	2.5%	0.0136%
Illinois	12.93%	8.9%				4.9%	0.0565%
Minnesota	10.83%	5.9%	11.1%	30.8%	0.072%	4.0%	0.0260%
Michigan	10.57%	6.7%				8.7%	0.0617%
Indiana	7.26%	9.4%	15.4%	20.9%	0.105%	5.8%	0.0393%
PLAINS STATES							
	7.78%	8.8%	7.7%	31.9%	0.040%	2.1%	0.0153%
Iowa	9.74%	9.5%				2.4%	0.0225%
Nebraska	9.25%	10.6%				1.4%	0.0140%
Kansas	6.29%	8.2%	7.7%	31.9%	0.040%	1.8%	0.0093%
Missouri	6.32%	5.6%				4.6%	0.0165%
UPPER WEST							
	8.59%	4.5%	7.7%	35.2%	0.021%	1.5%	0.0050%
North Dakota	14.08%	3.4%	6.5%		0.031%	2.2%	0.0102%
South Dakota	8.96%	8.4%	9.9%		0.075%	1.4%	0.0103%
Wyoming	5.94%	4.5%	7.7%		0.021%	1.3%	0.0035%
Montana	8.59%	1.1%	10.3%		0.010%	2.2%	0.0020%
Idaho	4.99%	6.7%	5.4%	35.2%	0.018%	1.5%	0.0050%

Data Source: Covidtracking.com

	Percent of Population Tested	Percent of People Tested Who Were Positive	Percent of People Who Tested Positive & Were Hospitalized	Percent of People Hospitalized Who Were Admitted to ICU	Percent of Total Population Hospitalized	Percent of People Who Tested Positive & Died	Percent of Total Population Who Have Died
A blank field means no data was available							
Median calculations only include states with available data							
WEST COAST	7.15%	5.5%	12.5%		0.040%	2.6%	0.0152%
Washington	7.15%	5.9%	13.3%		0.056%	4.1%	0.0171%
Oregon	5.66%	3.7%	11.8%		0.025%	2.3%	0.0048%
California	10.65%	5.5%				2.6%	0.0152%
MOUNTAIN/SOUTHWEST	9.05%	6.7%	11.1%	28.7%	0.078%	2.7%	0.0233%
Colorado	5.60%	10.0%	16.8%		0.094%	4.6%	0.0260%
Utah	10.46%	6.6%	6.5%	28.7%	0.045%	0.8%	0.0053%
Nevada	9.05%	6.7%				2.7%	0.0163%
Arizona	7.45%	15.3%	5.8%		0.066%	2.0%	0.0233%
New Mexico	16.42%	3.5%	15.7%		0.091%	4.1%	0.0237%
SOUTH	9.56%	7.4%	8.9%		0.043%	2.1%	0.0095%
Texas	6.52%	8.7%				1.5%	0.0084%
Louisiana	16.19%	8.0%				5.4%	0.0697%
Arkansas	10.36%	6.7%	6.8%		0.048%	1.3%	0.0091%
Oklahoma	8.76%	4.1%	11.0%		0.039%	2.8%	0.0098%
EAST	8.92%	10.3%	15.0%	25.4%	0.105%	4.7%	0.0518%
Pennsylvania	6.06%	11.2%				7.6%	0.0519%
Virginia	7.63%	9.6%	14.3%		0.105%	2.8%	0.0207%
West Virginia	9.75%	1.7%				3.2%	0.0052%
Delaware	11.33%	10.3%				4.4%	0.0518%
Maryland	8.92%	12.5%	16.1%		0.179%	4.7%	0.0527%
District of Columbia	13.88%	10.4%				5.3%	0.0767%
Ohio	6.74%	6.7%	15.0%	25.4%	0.067%	5.4%	0.0245%

Data Source: Covidtracking.com

Percent of Population Tested	Percent of People Tested Who Were Positive	Percent of People Who Tested Positive & Were Hospitalized	Percent of People Hospitalized Who Were Admitted to ICU	Percent of Total Population Hospitalized	Percent of People Who Tested Positive & Died	Percent of Total Population Who Have Died
------------------------------	--	---	---	--	--	---

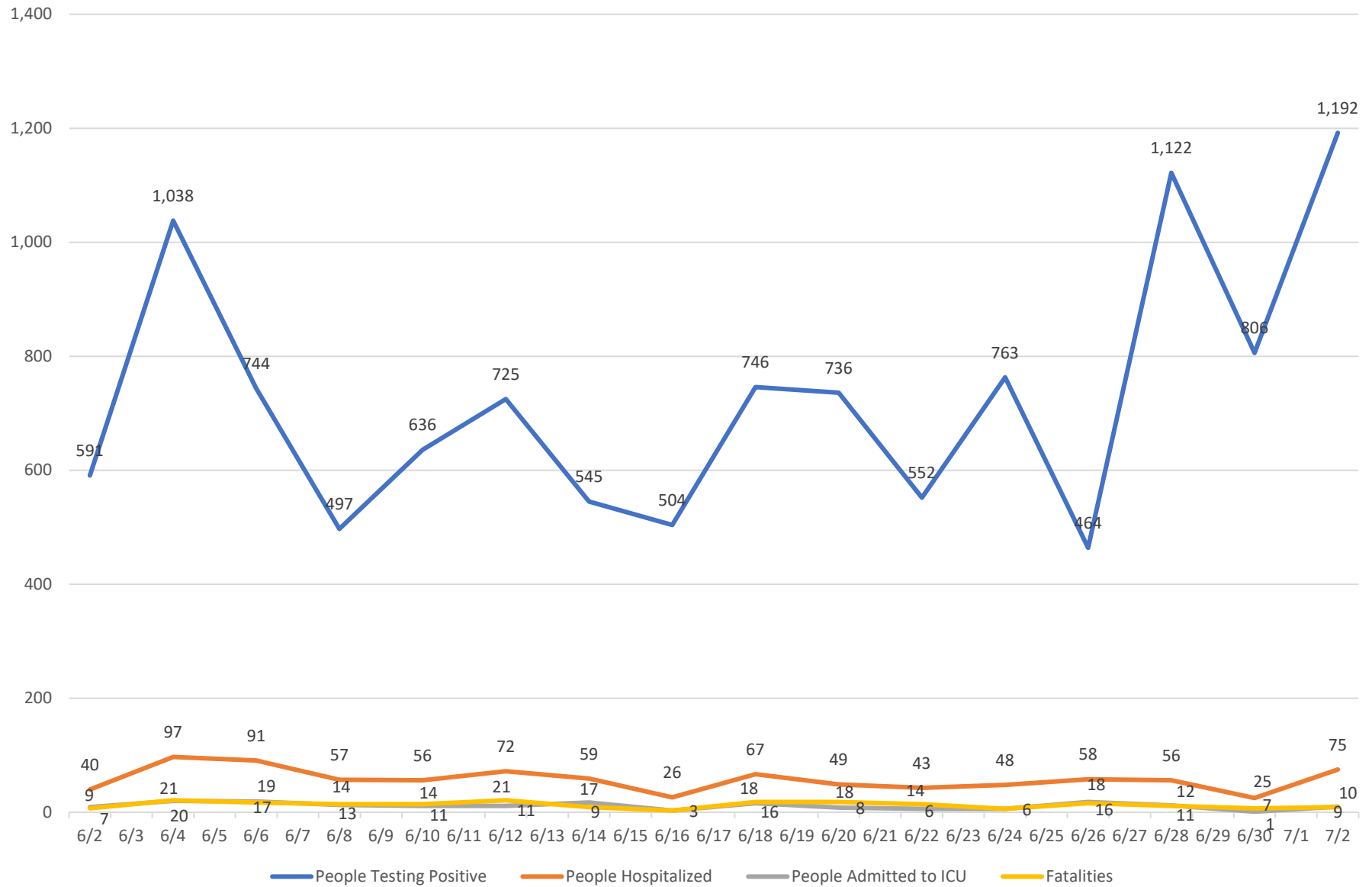
A blank field means no data was available

Median calculations only include states with available data

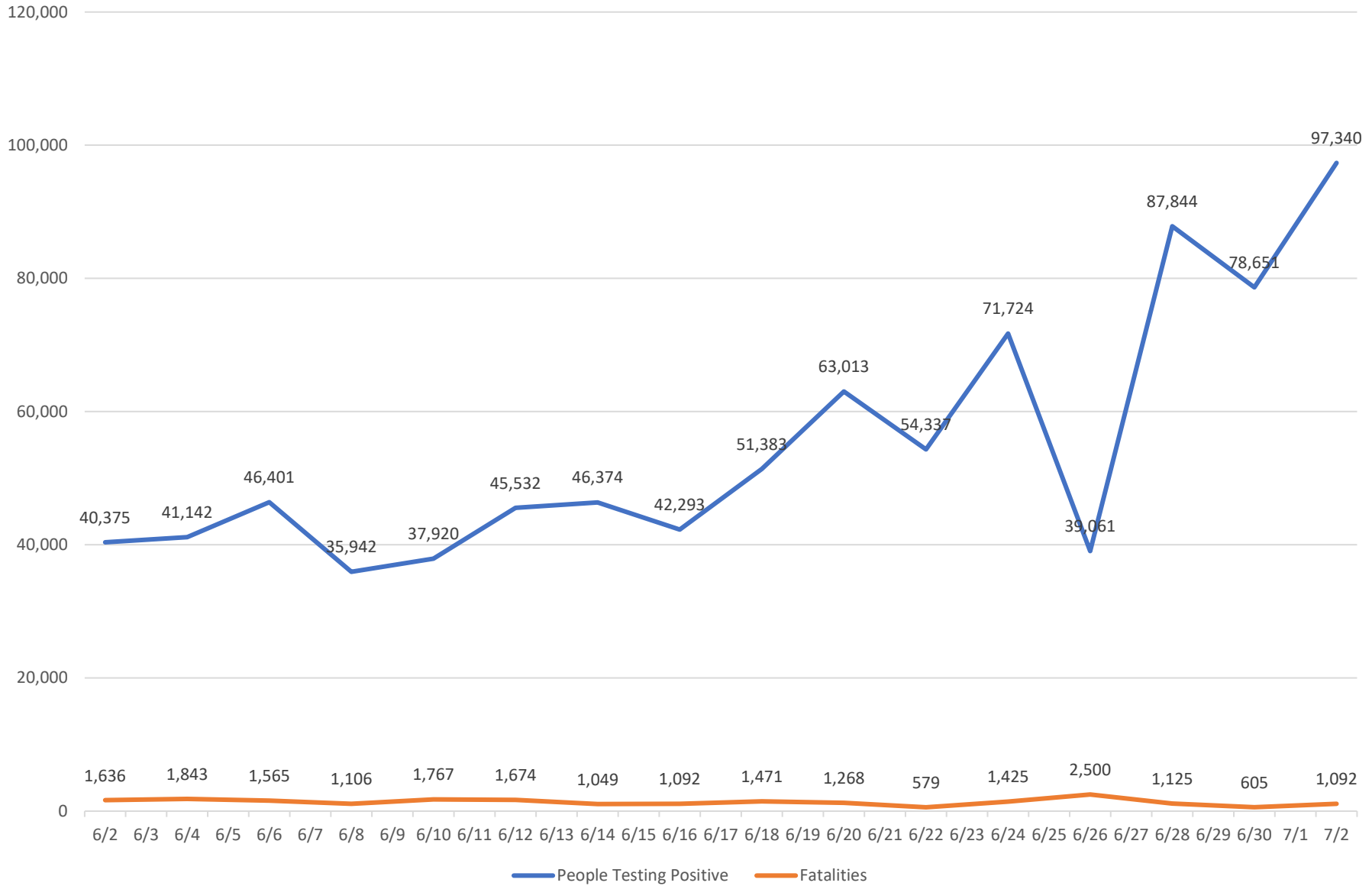
NORTHEAST	13.41%	9.7%	11.7%	28.7%	0.190%	6.4%	0.1158%
New York	20.43%	9.9%	22.8%		0.463%	6.3%	0.1279%
New Jersey	16.15%	11.9%	11.7%		0.224%	8.8%	0.1687%
Connecticut	13.41%	9.7%	22.0%		0.288%	9.3%	0.1214%
Rhode Island	23.12%	6.9%	11.9%		0.190%	5.7%	0.0905%
Massachusetts	12.30%	12.7%	10.4%		0.163%	7.4%	0.1158%
Maine	7.23%	3.4%	10.7%		0.026%	3.2%	0.0078%
New Hampshire	8.69%	4.9%	9.8%	28.7%	0.041%	6.4%	0.0271%
OUTLYNG	10.59%	1.0%	12.3%		0.008%	1.7%	0.0016%
Alaska	15.59%	0.9%				1.4%	0.0019%
Hawaii	5.60%	1.2%	12.3%		0.008%	2.0%	0.0013%
SOUTHEAST	8.66%	8.72%	8.52%	29.04%	0.059%	2.40%	0.0156%
Kentucky	8.38%	4.2%	16.6%	38.2%	0.059%	3.6%	0.0127%
Tennessee	11.86%	5.5%	6.0%		0.039%	1.3%	0.0088%
North Carolina	8.88%	7.1%	0.0%			2.1%	0.0129%
South Carolina	7.48%	9.7%	7.5%		0.055%	2.0%	0.0147%
Mississippi	9.83%	9.5%	11.4%		0.106%	3.9%	0.0362%
Florida	9.00%	8.0%	9.5%		0.069%	2.3%	0.0166%
Alabama	8.43%	9.4%	7.2%	29.0%	0.057%	2.5%	0.0198%
Georgia	7.96%	9.9%	13.4%	20.9%	0.105%	3.4%	0.0263%

Net Two-Day Change in Cumulative Numbers - Wisconsin

Source: covidtracking.com

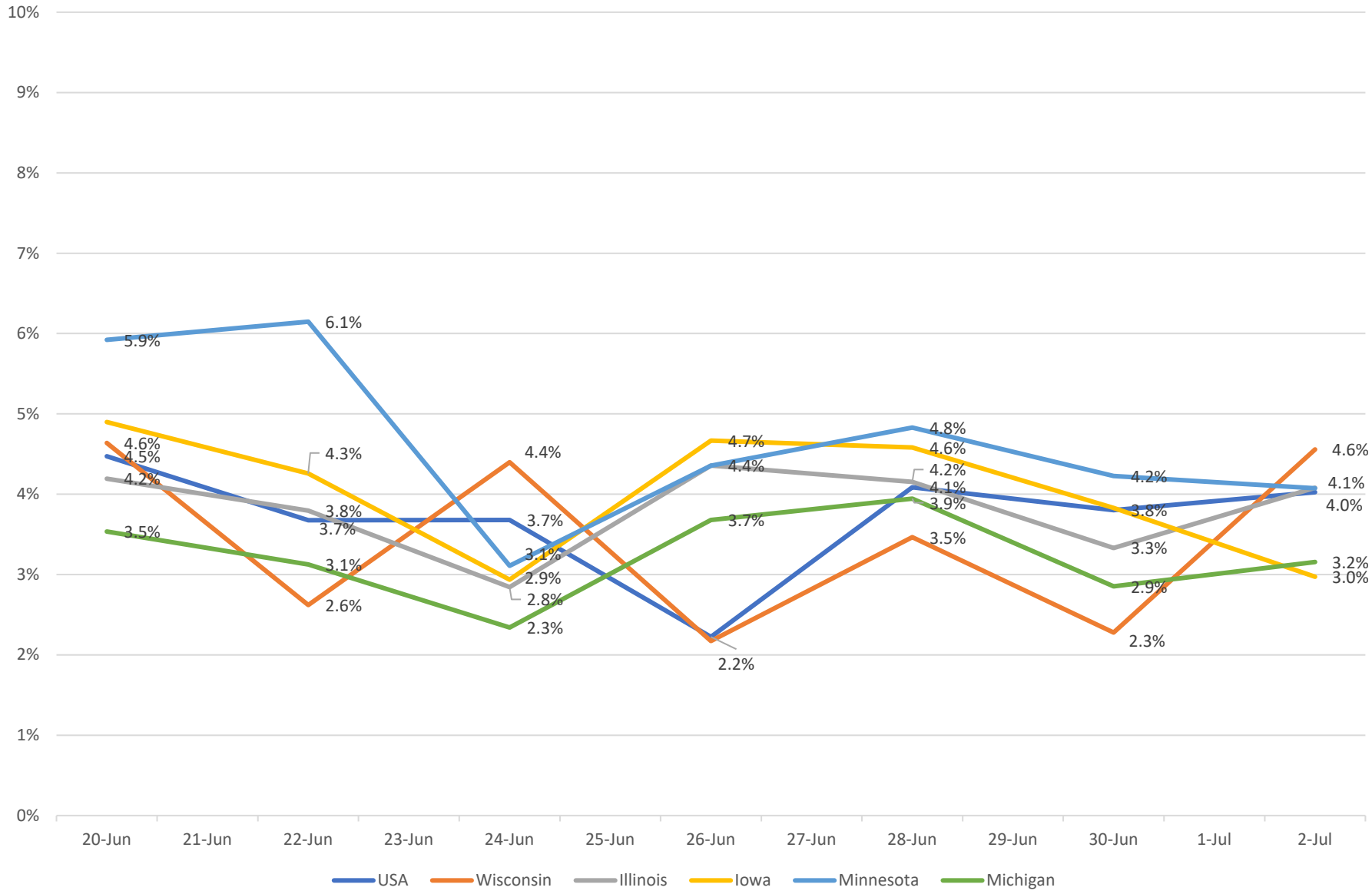


Two-Day Change in Cumulative Numbers - USA
 Source: www.covidtracking.com



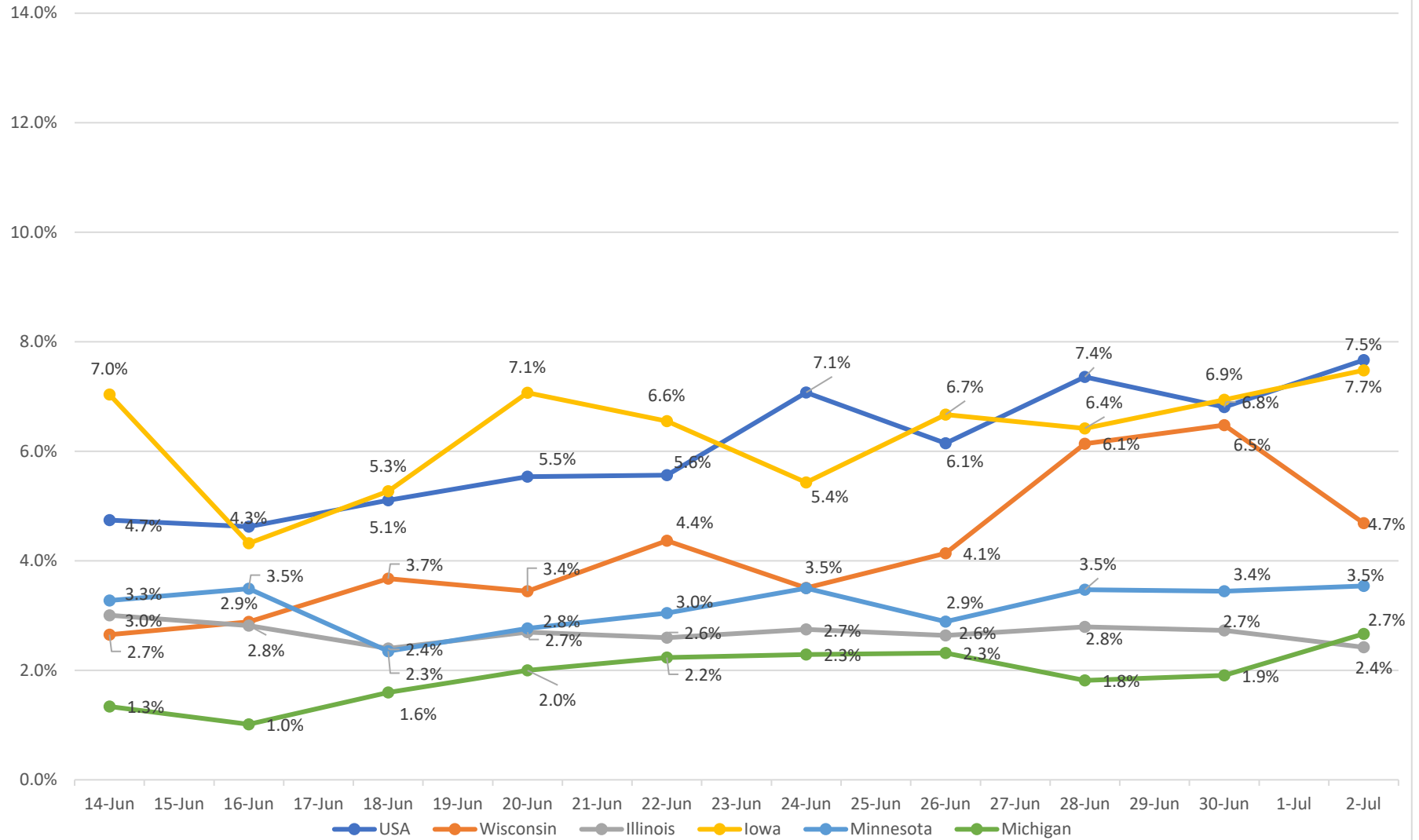
Two-Day Change in People Tested

www.covidtracking.com



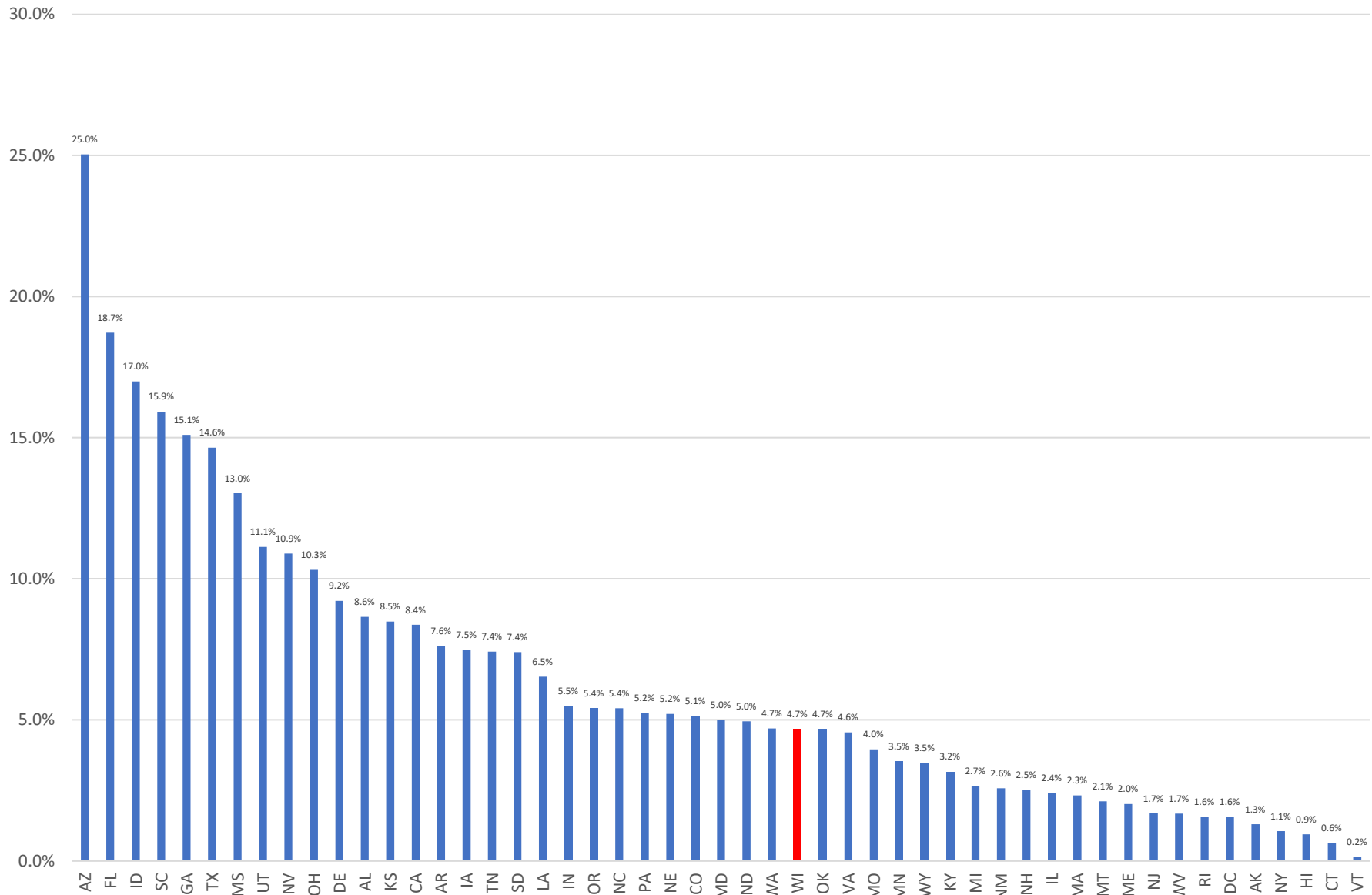
2-Day Change in Percent of Tests Positive for COVID-19

www.covidtracking.com



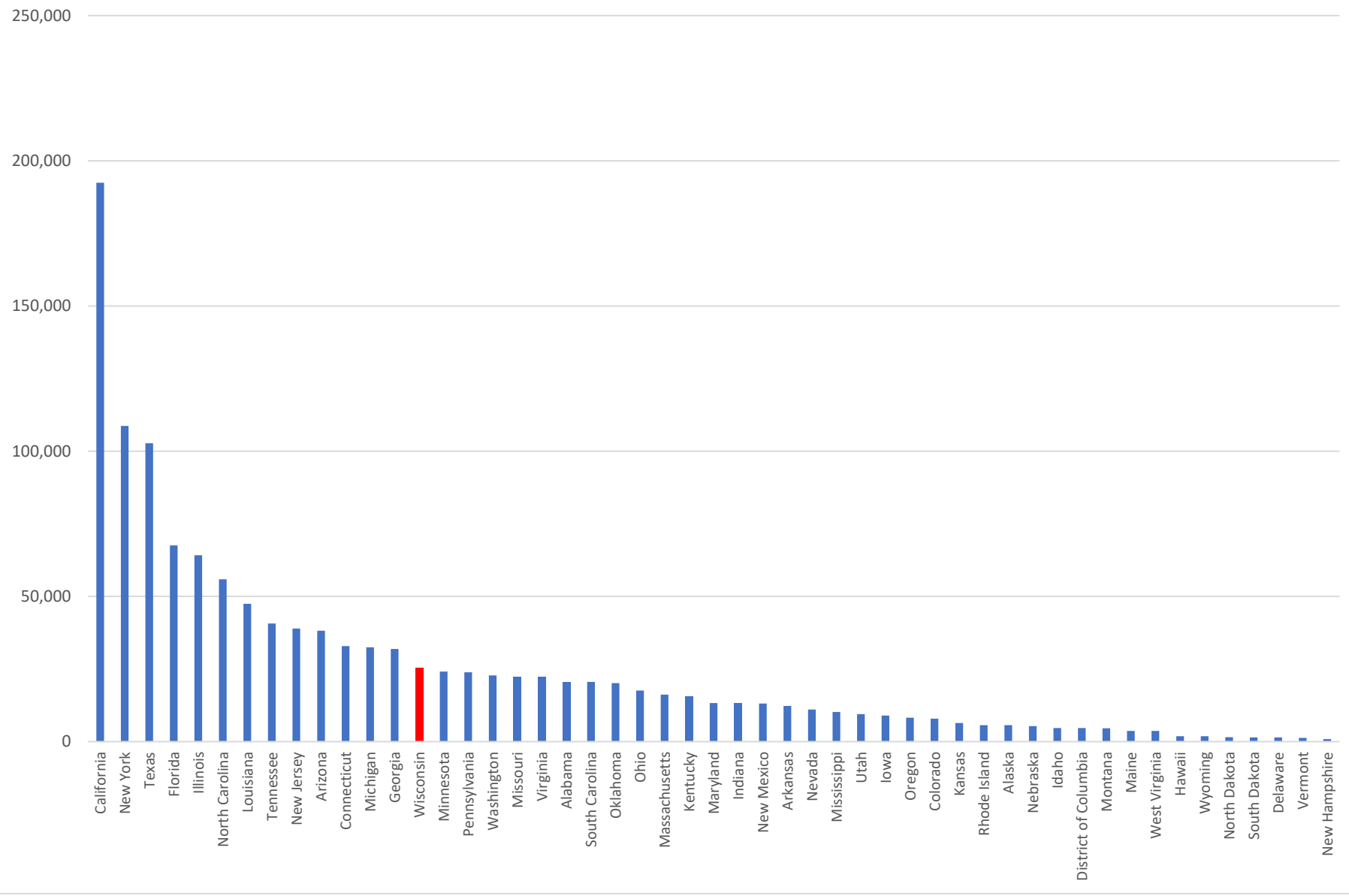
People Testing Positive as Percent of People Tested in Most Recent Two-Day Period

Source: covidtracking.com

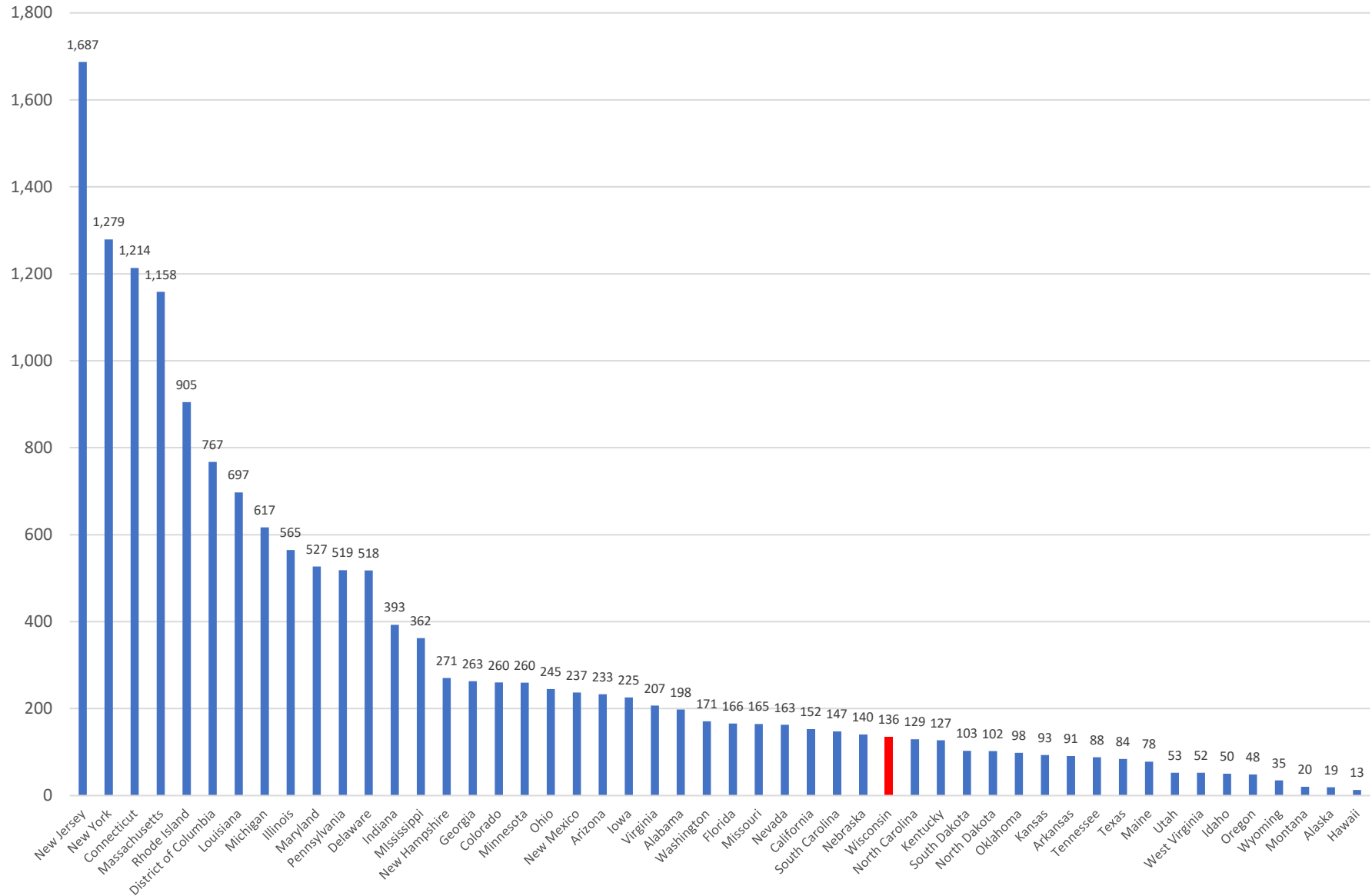


2-Day Change in Testing

Source: www.covidtracking.com



COVID-19 Fatalities Per Million
 Source: www.covidtracking.com



Fatalities Per Million by Wisconsin County

Source: Wisconsin Department of Health Services

