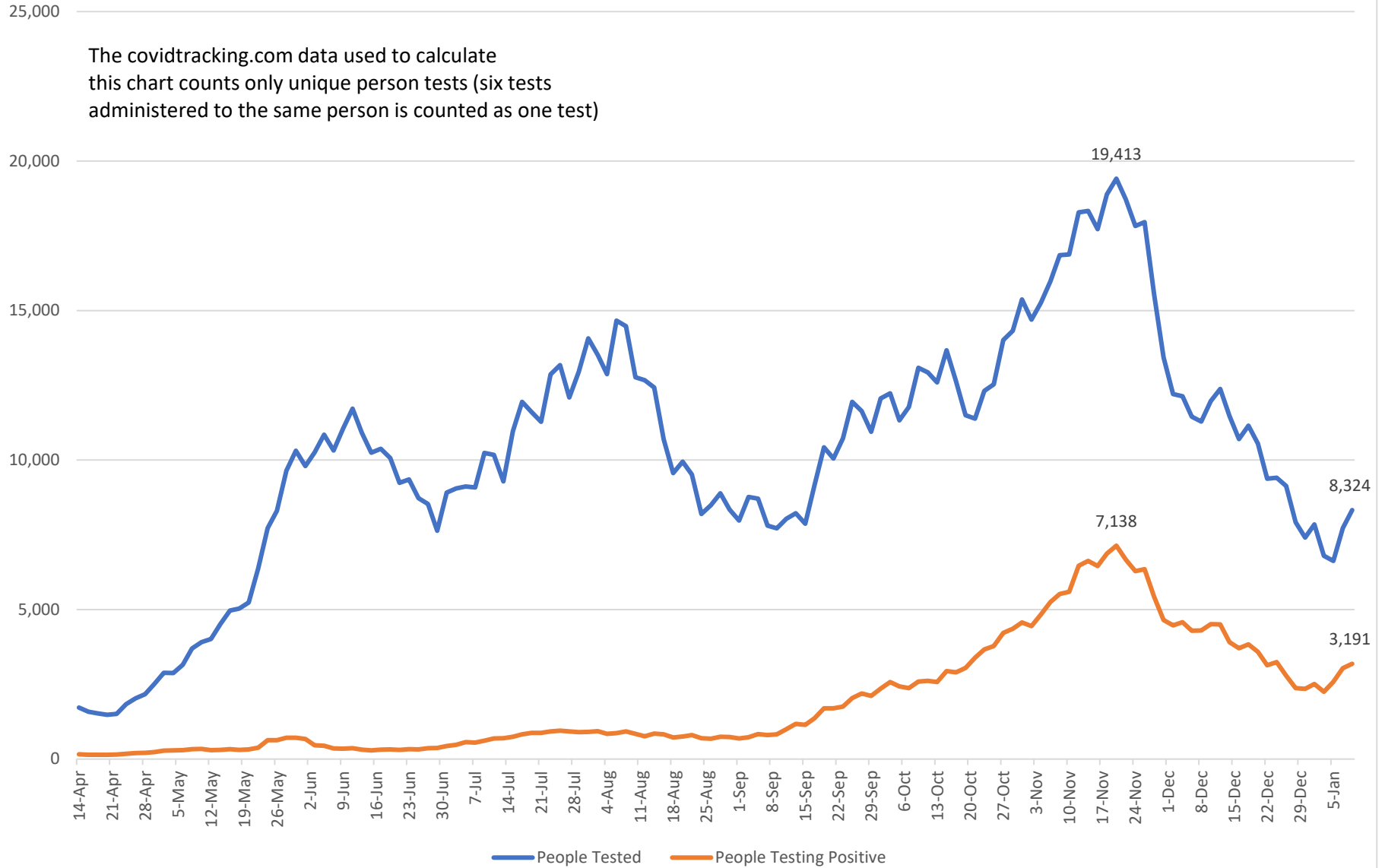


Wisconsin Tests & Positive Results

10-Day Rolling Average
Source: covidtracking.com

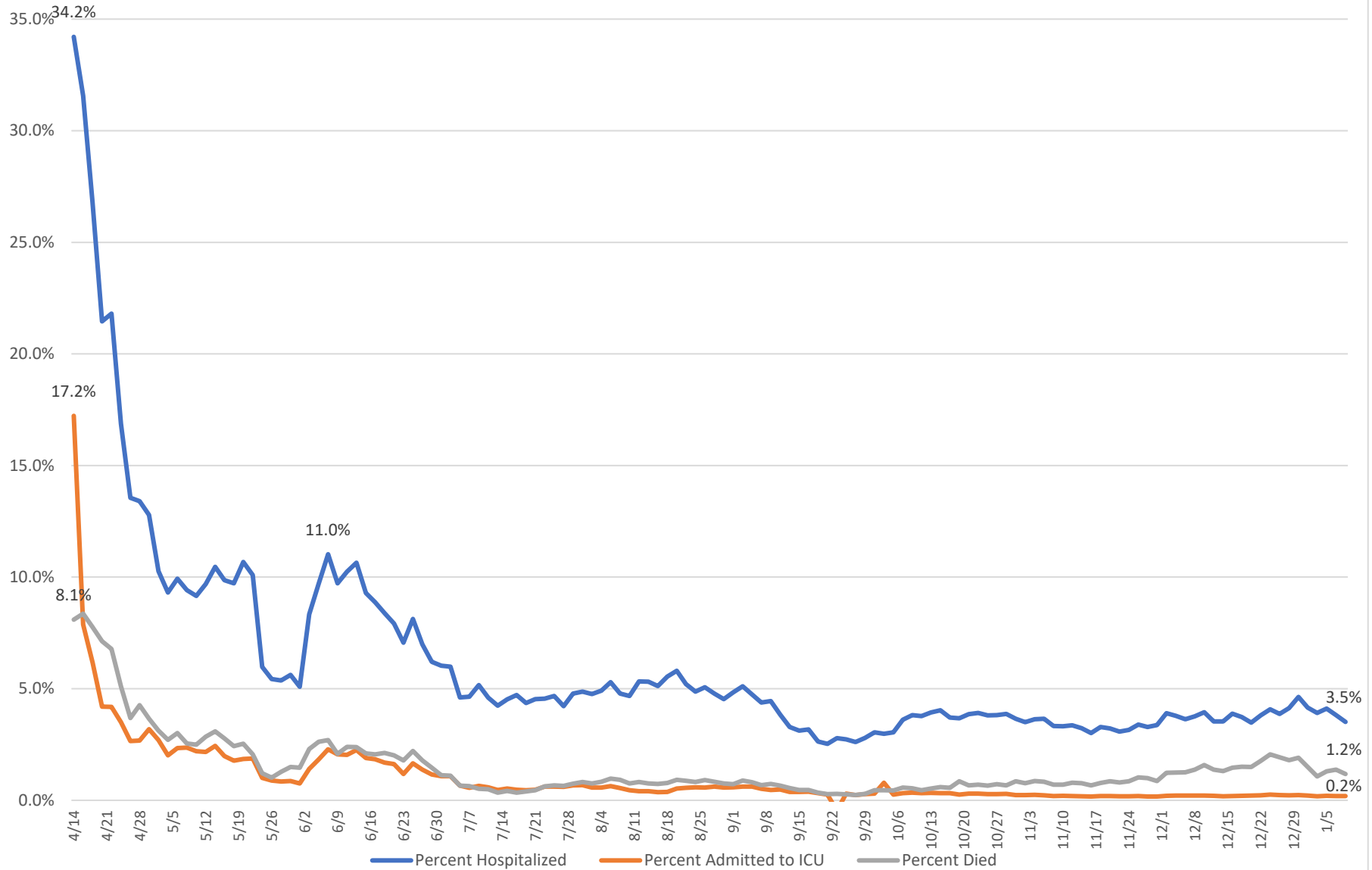


The covidtracking.com data used to calculate this chart counts only unique person tests (six tests administered to the same person is counted as one test)



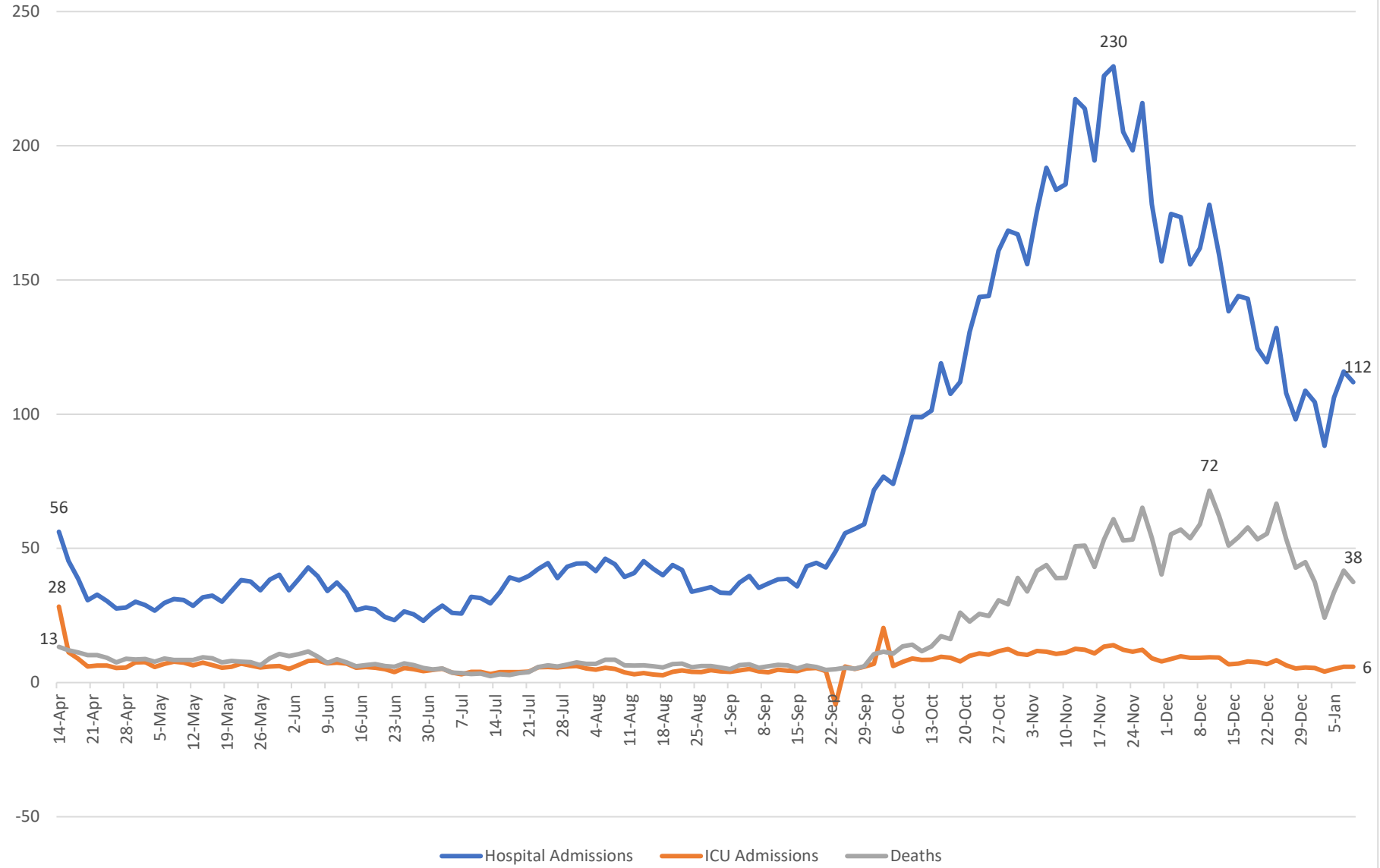
Outcomes for People Who Test Positive in Wisconsin

10-Day Rolling Average
Source: covidtracking.com



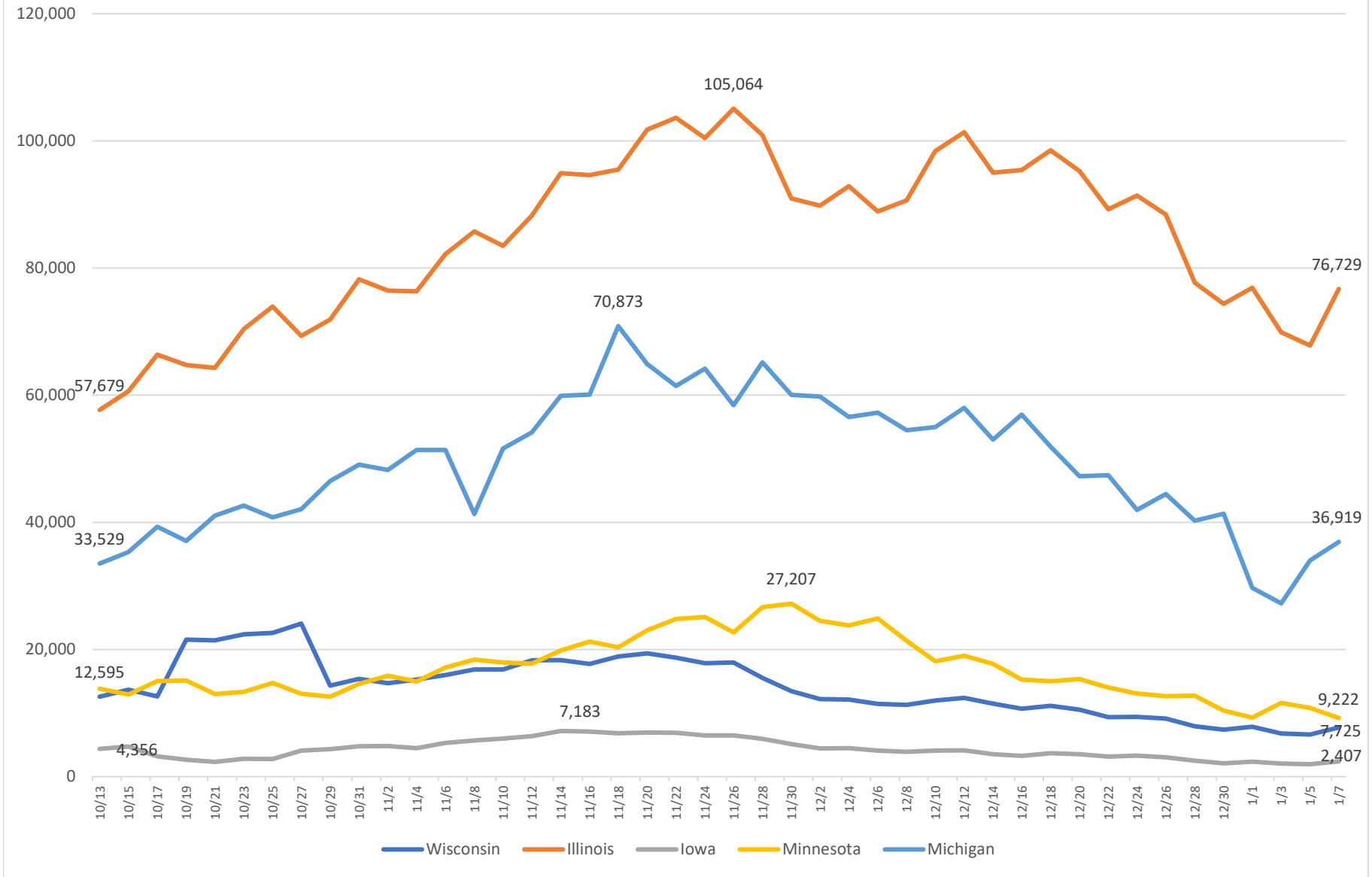
Outcomes for People Who Test Positive in Wisconsin

10-Day Rolling Average
Source: covidtracking.com



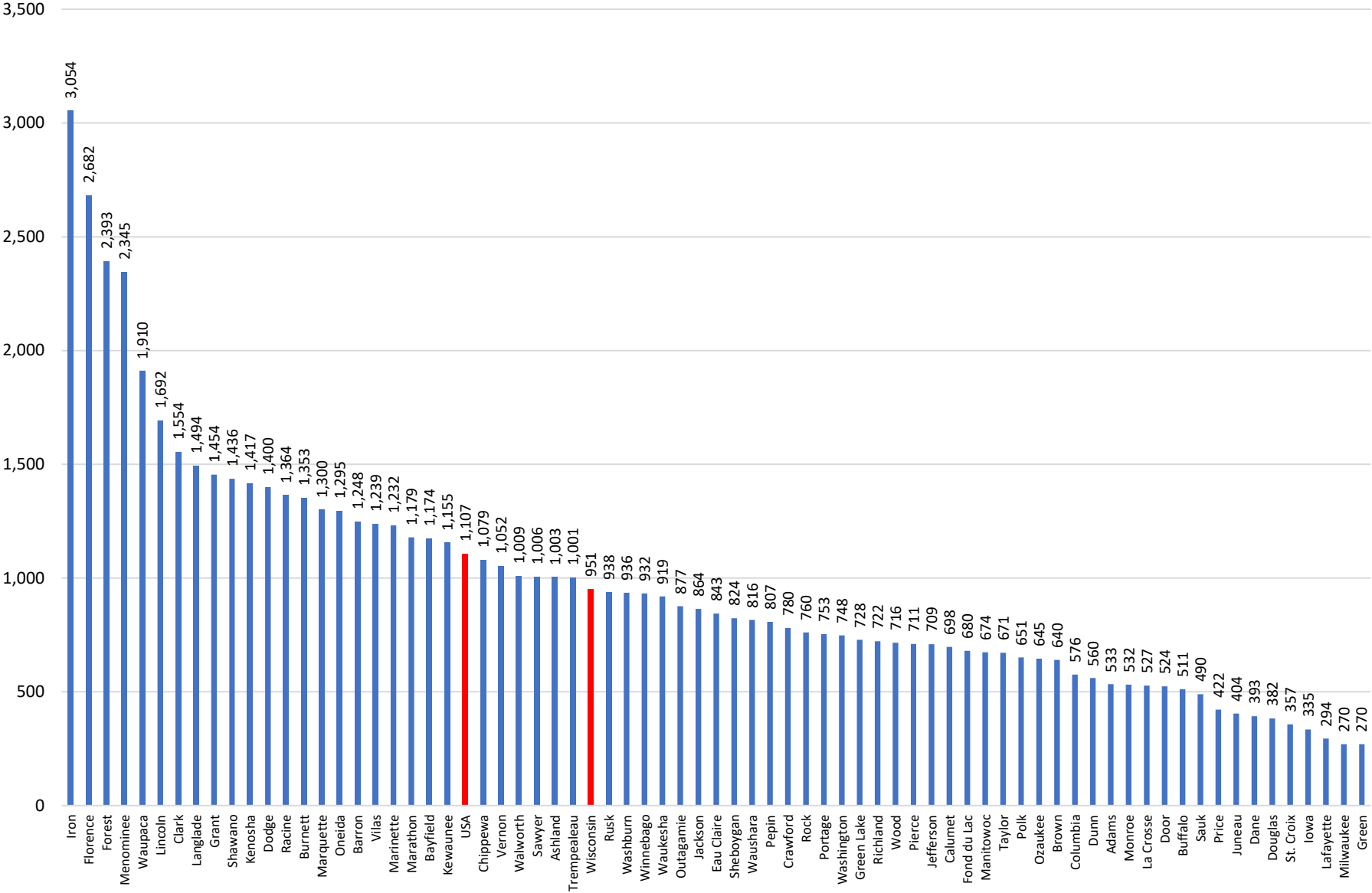
Tests Administered in Wisconsin

10-Day Rolling Average
Source: covidtracking.com



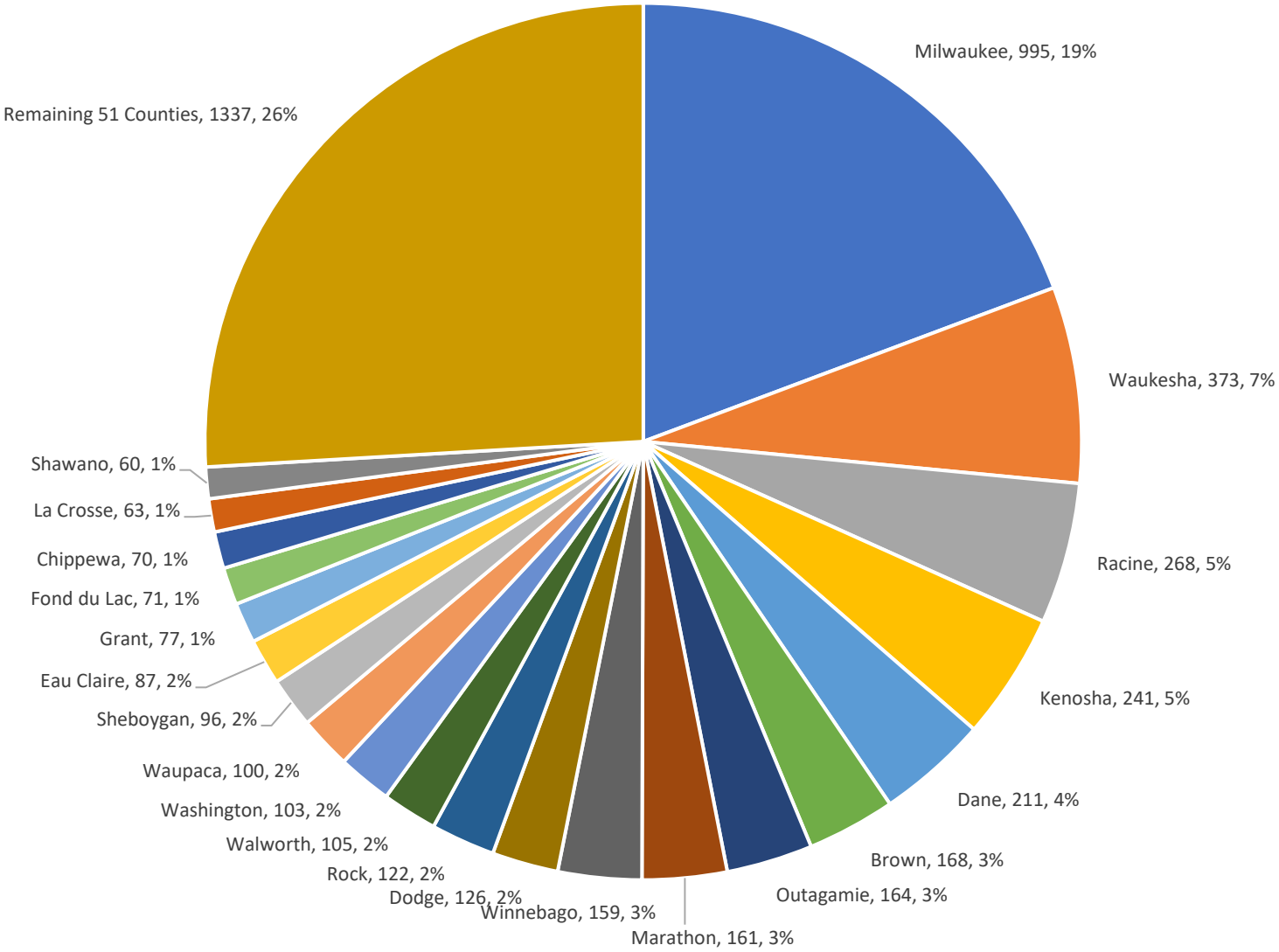
Fatalities Per Million by Wisconsin County

Source: Wisconsin Department of Health Services



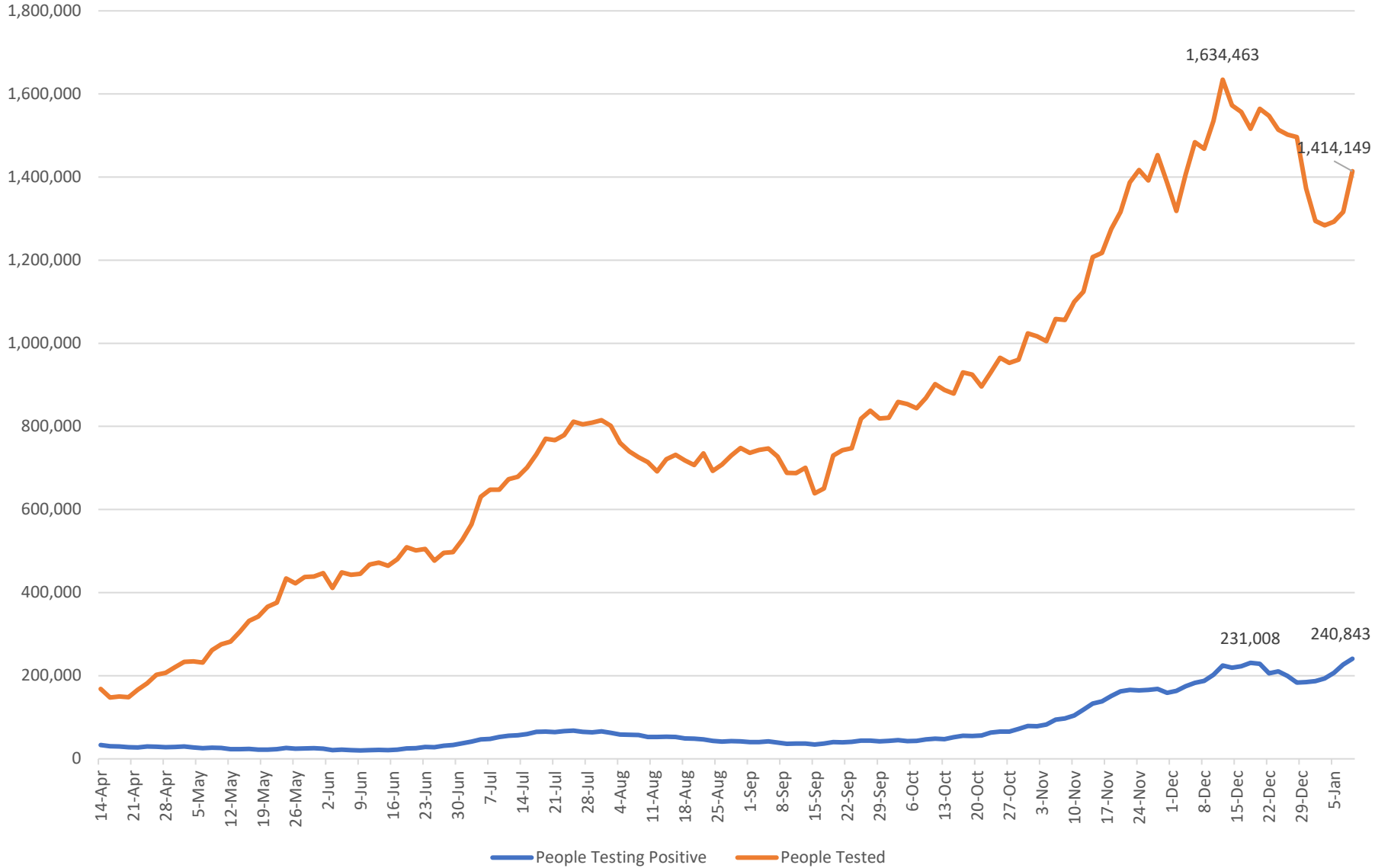
Number of COVID-19 Deaths by County

Source: Wisconsin Department of Health Services



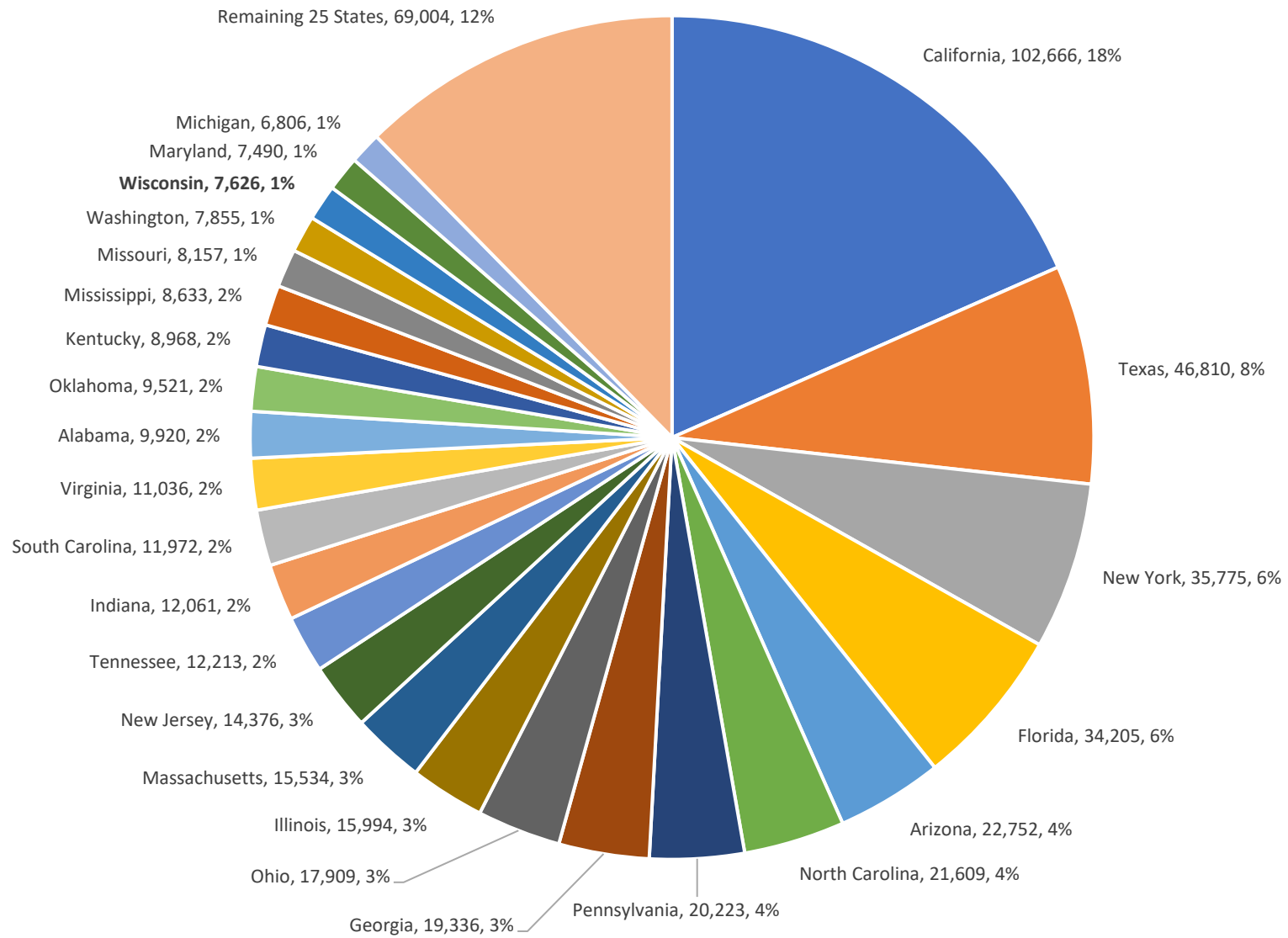
Nationwide Outcomes

10-Day Rolling Average
Source: covidtracking.com



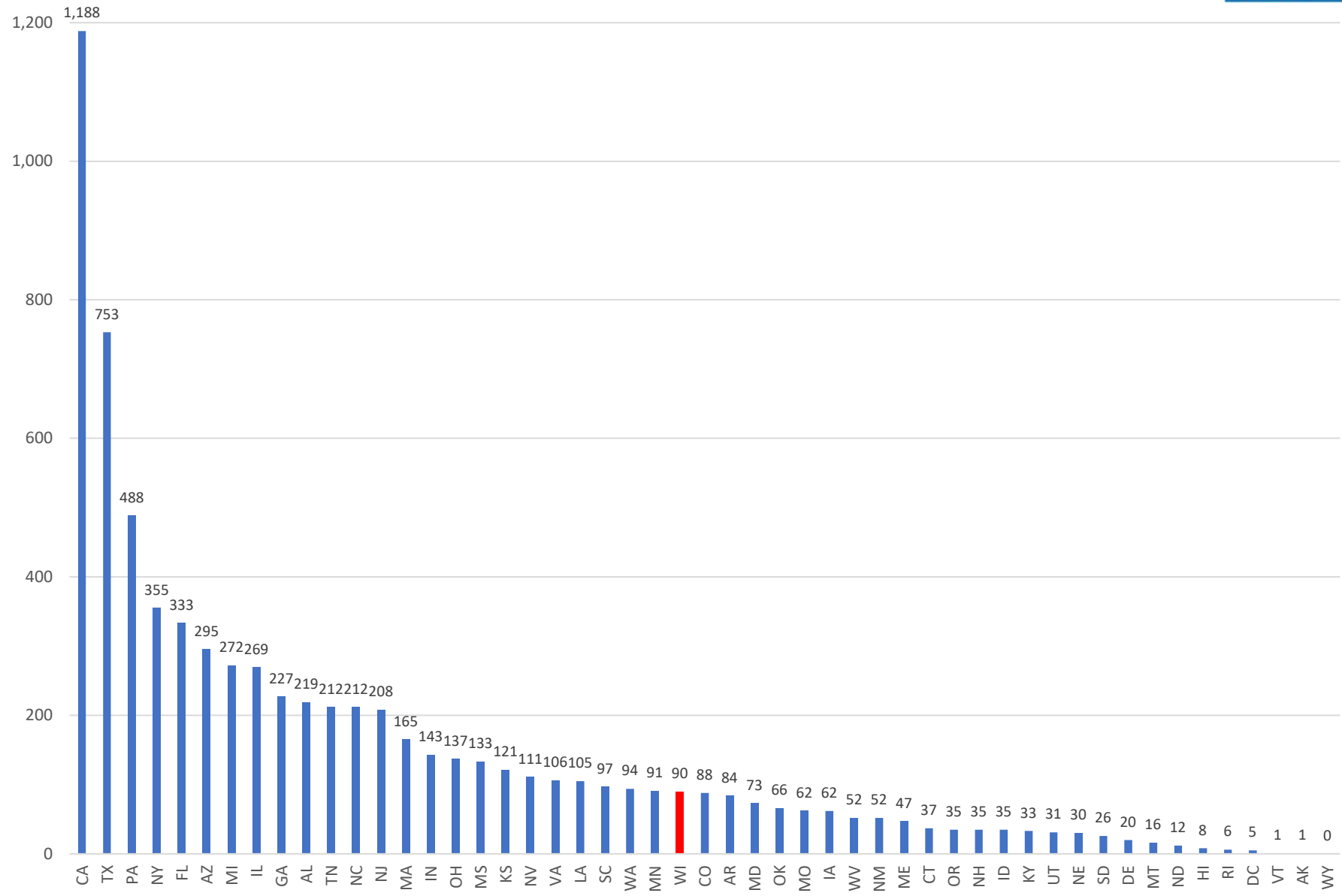
Two-Day Change in Positive Test Results

Source: covidtracking.com



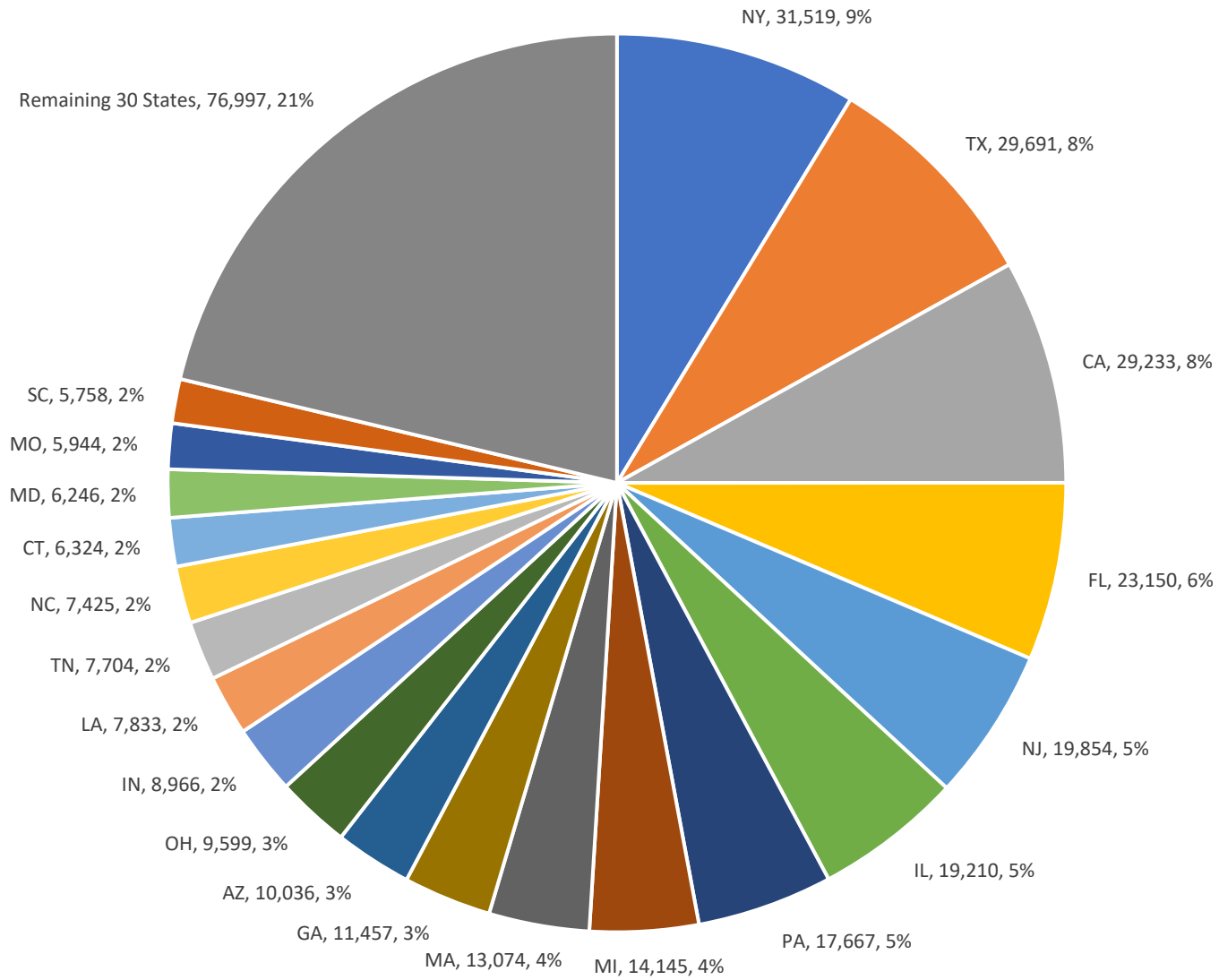
Two-Day Change in Fatalities

Source: www.covidtracking.com



Cumulative COVID-19 Deaths by State

Source. covidtracking.com



COVID-19 Fatalities Per Million

Source: www.covidtracking.com

