

# R Systems speaks Boomi

Our eGuide to Dell Boomi Services 2021

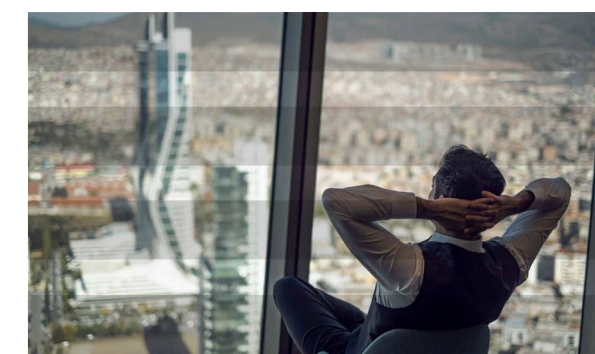




# TABLE OF CONTENTS



<b>Introduction</b> R Systems is a Certified Dell Boomi Partner	<b>2.</b>
<b>Why R Systems?</b> We are an established Center of Excellence for Boomi	<b>3.</b>
<b>What Do We Offer?</b> Industry & Technology Solution Accelerators	<b>4-5.</b>
<b>Where Do We Make A Difference?</b> With experience comes efficiency	<b>6.</b>
<b>How Do We Work?</b> A Full Range of Services	<b>7-8.</b>
<b>Our Successes</b> A few vital statistics	<b>9.</b>
<b>Who Are We?</b> Our People	<b>10.</b>
<b>What We Believe</b> We Speak Digital	<b>11.</b>



360 Degree Integration  
 End-to-End Value  
 Technology Solution Accelerators  
 Consulting  
 1000s of Migrations  
 True Digital Transformation  
 Industry Solution Accelerators  
 Developers  
 70 Boomi Certified Professionals  
 Engineers  
 360 Degree Integration  
 True Digital Transformation  
 Certified Boomi Partner  
 End-to-End Value  
 Managed Services  
 Multidisciplinary  
 Industry Solution Accelerators  
 Certified Boomi Partner  
 Implementation  
 Consulting  
 True Digital Transformation  
 Industry Solution Accelerators  
 Certified Boomi Partner  
 360 Degree Integration  
 Managed Services  
 Developers  
 70 Boomi Certified Professionals  
 Engineers  
 Multidisciplinary  
 Agility  
 Consulting  
 Integrators  
 Certified Boomi Partner

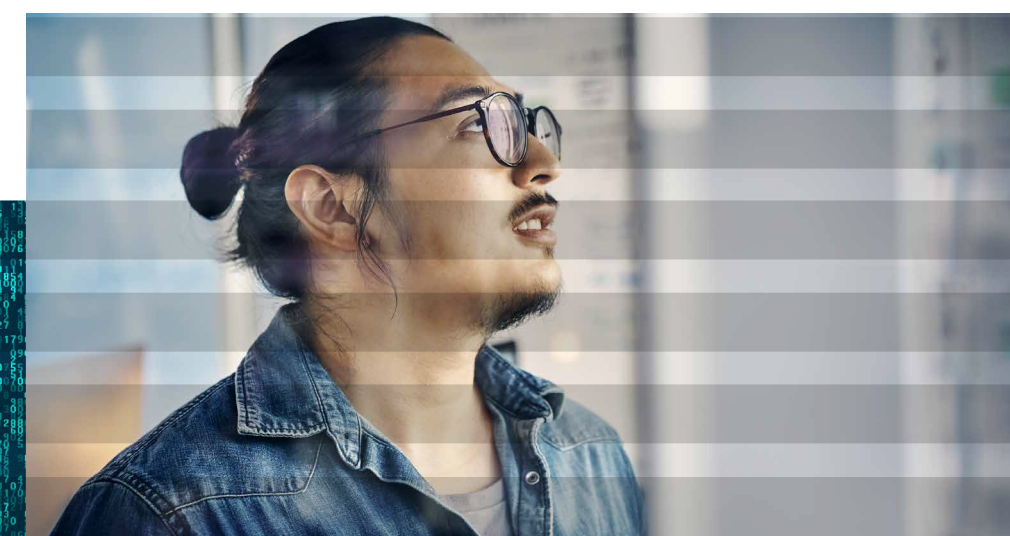
# INTRODUCTION

## R Systems is a Certified Dell Boomi Partner

The promise of Dell Boomi is true digital transformation through the unification of your entire digital landscape – cloud, SaaS, and on-premises systems. And **R Systems'** promise? To accelerate that transformation.

We have 26 years of experience in software engineering. Our depth of knowledge and breadth of skills help ensure you get an industry-best integration.

We've migrated thousands of legacy apps to Boomi. Still, we recognize that every business is different, with its own unique challenges. Our flexible and efficient engagement model, complemented by our multidisciplinary team of integrators, engineers and developers, enables you to accelerate business agility.



# WHY R SYSTEMS?

## We are an established Center of Excellence for Boomi

**R Systems** is all-in with Boomi. With more than 70 Boomi Certified Professionals worldwide – three-quarters of whom are Boomi Certified – we are ready to take on any Boomi migration, anywhere in the world.

Our team regularly undertakes engineering bootcamps, training and certifications to stay current with trends and developments in Boomi technology. This has enabled us to help establish industry best practices, benchmarking and thought leadership in the integration platform-as-a-service (iPaaS) space.

By leveraging our own internal Boomi expertise as well as the open Boomi community, **R Systems** has gained access to flexible solutions that simplify the development and deployment of integration processes.

### **We are a 360-degree Boomi platform service integrator**

R Systems has extensive experience in migrating on-premises enterprise applications to the cloud, including massively complex ERP, HCM, and CRM systems. Since becoming a Certified Boomi Partner, we have undertaken more than 50 projects comprising hundreds of integrations, all successfully developed and delivered in addition to our hyper care and support services.

### **We are an advanced Boomi product development partner**

As an advanced product development partner for Boomi, we leverage our vast Industry experience and **R Systems** engineers to provide pre-built solution packages for specific business case implementations.



# WHAT DO WE OFFER?

## Industry Solution Accelerators

The **R Systems** team speaks Boomi, but we're also fluent in broader business and technology issues. Our Solution Accelerators are 100% turn-key – immediately ready to deploy to help you achieve greater agility without compromises.

These Boomi Industry Solution Accelerators require no custom coding, administration or maintenance. And because all the design development is pre-built, there is no downtime.



### Self-Service Supplier Onboarding

Onboard suppliers for B2B.EDI integration in a few minutes rather than weeks



### Contextual Customers Experiences

Using contextual unified view of customers create better experiences for them



### Exchange Rate Workflow Automation

Workflow automation of exchange rate updates to enterprise systems



### Hire to Retire – Self-Service Onboarding

Enable self-services and workflow approach for employee processes



### EDI Integration Framework

Accelerate EDI integrations with your trading partners using EDA



### Integration with TMS

Transform your logistics management using TMS services



### Automation of IT Workflows

Standardizations of workflows with ITSM applications



### Event-Driven MES – ERP Integrations

Connect your MES systems with ERP using events for efficient plant operations



### Event-Driven Warranty Management

Manage your Warranty Lifecycle efficiently using events



### Omnichannel Framework

Self-service activation of services by telecom customers



### MDH Integration

Single source of data for all application systems



### Expense Claim Workflow Automation

Eliminate the most painful aspects of filing and processing expense reports.

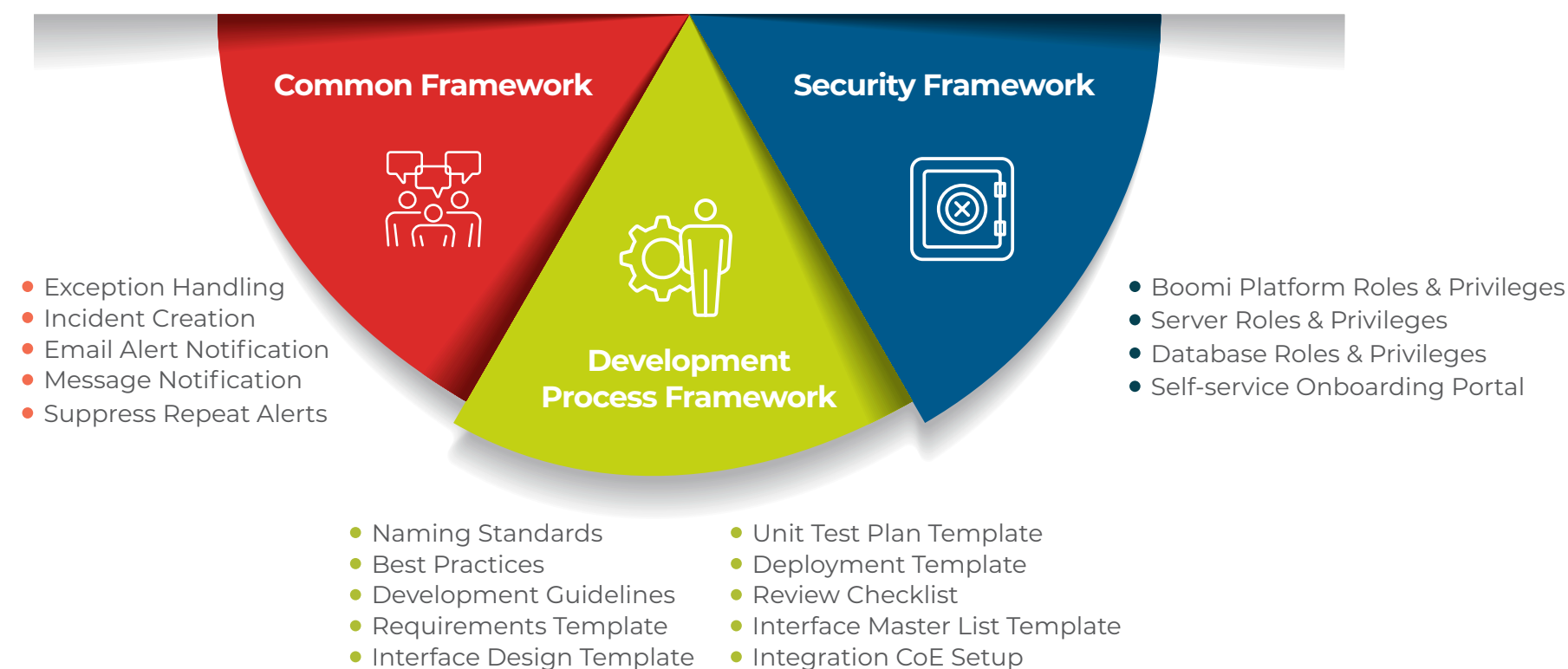
# WHAT DO WE OFFER? (con't)

## Technology Solution Accelerators

In addition to the Industry Solutions Accelerators, we also leverage our deep technology expertise to provide Technology Solutions Accelerators that reduce your steps to implementation and support.

These pre-built Technology Frameworks use our methodology, documentation and create blueprints to shorten your execution time so you can:

- Start your development projects early, by **5 weeks** in advance
- Spend **50% less time** in onboarding, audits
- Experience **25% reduction** in development and support efforts



# WHERE DO WE MAKE A DIFFERENCE?

## With experience comes efficiency

We know a lot about Boomi. A lot. And with our in-depth knowledge, we work smarter, faster, and more cost-effectively.

Our talented Boomi experts are involved in identifying and creating end to end automation of several use cases that yields 50 to 75 % productivity savings for repeatable business processes. We look at requirements differently and identify the possibility of automation that drives significant dollar and effort savings for our clients over and above from rapid go live.

We assign senior engineering talent to every engagement we undertake. These are seasoned software integrators who can get to the heart of the solution, right away. Our bench strength is deep – a large, all-star team of certified Boomi professionals who bring real insight, expertise, and agility to every aspect of every assignment.

At the same time, we believe in providing our talent pool with many ways to grow professionally. It's one of the reasons our retention rate remains among the highest in the industry... and why we have become a trusted partner for enterprises of all sizes in all sectors worldwide.





# HOW DO WE WORK?

## Consulting, Implementation, and Managed Services

### Our Consulting Process

We look at every engagement as a means of solving a business challenge. To begin, we bring all business and IT stakeholders together to explore, evaluate and determine the best integration approach to take. Our goal is to enable your organization to realize the full potential of cloud-based integration, always from the perspective of driving business performance.

### Our Implementation Process

01

#### Define Requirements

High-level Integration/ ETL/MDM requirements document categorized based on service pattern and business use cases



02

#### Analyze Existing Platform and Perform Gap Analysis

Gap analysis report and documentation of re-useable components from the existing implementation.



03

#### Assess IT Assets, Skills, Organizational Strategy & Governance Procedures

Assessment report and recommendations



04

#### Evaluation and Recommendations

Assessment report and recommendations



05

#### Define Reference Architecture and Strategy

Define Digital Integration, Reference Architecture, Software Architecture, Deployment Architecture, Reusable Framework and more..



### Our Managed Services Process

To help ensure the ongoing success of your Boomi implementation, **R Systems** provides complete development and architecture support, with full monitoring and maintenance services.



# HOW DO WE WORK? (con't)

## A Full Range of Services

As a Certified Dell Boomi Partner, **R Systems** can focus on your specific needs with our comprehensive services offering.



# OUR SUCCESSES

A few vital statistics

220 +

migrated integrations of new and existing SAP PI/PO with 10+ systems

100 +

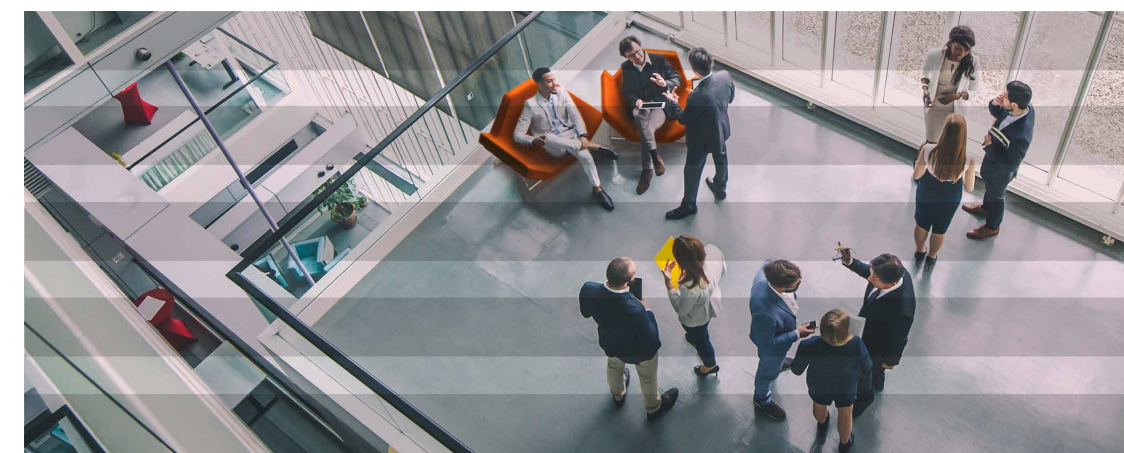
EDI specific integrations with multiple vendors

168 +

integrations with multiple Enterprise Data Management application channels in 12 months

157 +

integrations along with 100+ EDI specific integrations with multiple retail vendors in 14 months



# WHO ARE WE?

## Our People

**Nilay  
Kant Rai**



**Boomi Architect**  
**Industry Experience:** 11 years

Successfully implemented numerous enterprise-wide integration solutions for a range of industries. Architecture team member for different integration landscapes involving On-Premise-to-On-Premise, Cloud-to-Cloud and Hybrid cloud environments. Has a solid understanding of various integration patterns, design concerns, and implementation considerations of error handling and recovery, performance, and end-to-end monitoring.

**Hemant  
Sharma**



**Senior Software Engineer**  
**Industry Experience:** 5 years

Deep understanding of the integration domain, including cloud-based integration technologies, integration patterns, design and development of modern integration patterns that enable customers to achieve true digital transformation initiatives.

**Saiprakash  
Ganji**



**Senior Software Engineer**  
**Industry Experience:** 8 years

Has extensive involvement with integrating SAP with full enterprise landscape, including Salesforce, AWS, Workday, Concur. Great expertise in various data transport protocols such as iDoc, RFC, Proxy, and http.

**Kamlendra  
Pratap Singn**



**Project Manager**  
**Industry Experience:** 12 years

Vast experience in delivering end-to-end projects for multiple industries and domains, with specialty in Retail, Marketing, Public, Manufacturing and Education, among others. An engineer by background, has spent most of his professional life travelling around the globe and assisting customers in project delivery.

# WHAT WE BELIEVE



Technology is not just hardware and software. It's a language. It enables companies to reinvent themselves in original, meaningful, and valuable ways.

**R Systems** speaks Technology. We understand it, deeply. We are fluent. But we also speak today's language of Business, with equal fluency.

We translate business goals into coherent technology solutions that speak clearly to your customers, business partners and employees.

In other words, we speak the language of Technology and Business, combined.

**We speak Digital.**



## Solution Accelerator Demonstration

Consider scheduling a complimentary, obligation-free demonstration of a Technology or Solution Accelerator with **R Systems** today.  
To book your session, contact:

**James Tiwari, Director – Product Development**

**E:** james.tiwari@rsystems.com

**T:** 630-991-1660

### Corporate Office – USA

5000 Windplay Drive, Suite 5,  
El Dorado Hills  
CA 95762

+1 916 939 9696 | [rsystems.com](http://rsystems.com)

